

Mound City NEWS

Published & Printed in
Mound City, Missouri
Vol. 132, No. 3
75¢
www.moundcitynews.com

Serving all of Holt County, Missouri, since 1879. Home of Squaw Creek National Wildlife Refuge & Big Lake State Park.

THURSDAY • JULY 28 • 2011

Back-to-school rummage sale August 5 and 6

The Mound City United Methodist Church will be hosting a back-to-school rummage sale on Friday, August 5, from 8 a.m. to 3 p.m. and Saturday, August 6, from 8 a.m. to 12 p.m.

There will be a wide variety of items for sale, including, but not limited to: children's clothing, adult clothing, household items, furniture, and season specific room where summer and winter items will be displayed for sale. Don't let the "back-to-school" title fool you; there will be something for everyone's interests. There will be live music provided by the Saranades and a snack shack with various food items for sale.

For more information, please contact Carolyn Hall at 442-9915.

USDA flood informational meeting August 4

The Holt County USDA Agencies will be hosting a flood informational meeting on Thursday, August 4, at the Squaw Creek National Wildlife Refuge near Mound City, located on Highway 159 South, from 1 p.m. to 3:30 p.m. due to the extensive flooding in Holt County.

A wide cross section of USDA personnel will be present at the meeting to answer questions about the various programs available. All producers affected by the flood are encouraged to attend. For questions regarding the meeting, contact the Holt County FSA office at 442-3134.

Vacation Bible School to be held at the First Christian Church August 1-5

The First Christian Church in Mound City, MO, will be hosting "See What's Happening... On Main Street" Vacation Bible School (VBS) for ages 3 through 12th grade, Monday through Friday, August 1-5, from 6:00 p.m. to 8:30 p.m.

There will be a special "off-site" program for middle school, jr. high and high school students. A "Parent Participation" will be held Friday night followed by a BBQ dinner. For more information or to pre-register, call 660-442-3104 or 660-442-6416.

The church is asking business owners to provide a project that can be completed on the outside of the business. Just provide what you would like to have done and it will be taken care of. VBS staff strive to teach the students that they will be gaining more than the people they are helping. Ideas for projects are washing windows, pulling weeds, building something, cleaning the sidewalk/street in front of the business, etc.

Party in the Park

The Mound City Kiwanis Club is hosting a full day of 'free' summer fun at Griffith Park for all ages. The "Party in the Park" will begin at noon this Saturday, July 30, and continue through the evening.

In addition to the shelter house, a large tent will be set up on the grounds for respite from the sun.

The following is a schedule of the events beginning at noon on Saturday:

12:00 p.m. - Lunch sponsored by Mound City Rural Firemen - Pulled pork, coleslaw, chips, drinks (free will donation)

12:00 p.m. - Farmers' Market, Crafts, Baked Goods

1:00 p.m. - Horseshoe Tournament (Lee Poe is contact person at 660-442-6012)

1:00 p.m. - Swimming Pool opens

1:00 p.m. - Sand Volleyball Tournament (Matt Phillips is contact person at 816-390-1727 or Chris Krueger at 660-491-3822)

2:00 p.m. - Open Stage for karaoke, singing, guitar, key-boarding, etc.

3:00 p.m. - Children's and Adult Water Fight sponsored by the Mound City Firefighters

4:00 p.m. - 5:30 p.m. - Bingo (free, with prizes)

5:00 p.m. - Day/Night Couples' Golf Tournament begins at Mound City Golf Course, 660-442-5780

5:30 p.m. - Supper sponsored by Mound City Kiwanis - Hamburgers, hot dogs, chips, drinks (free will donation)

7:00 p.m. - The Curtis Wayne Stroud Band plays on the main stage

DUSK - Movies Under the Stars showing "Tangled" sponsored by the State Theater (popcorn included)

2011 Flood still hanging around... 6 weeks and counting



FLOOD COVERAGE

PAGE 8

Another ton of rock, another load of gabion stone - Are just part of the materials that have been hauled by Burlington Northern Santa Fe (BNSF) railroad across the Rulo, NE, bridge in an effort to fix the tracks and build bridges. BNSF has been using Highway 159 east of the Rulo bridge as a base for a new road that BNSF is using to access its rail. The 'new road' stretches approximately 2.6 miles and has three temporary bridges in it to allow the floodwaters to pass under. Bulldozers, trucks, cranes and a myriad of equipment can be seen along this new stretch of road and rail.

Claims against Corps need to be turned in

Holt County property owners interested in filing a claim for damages against the US Army Corps of Engineers (USACE) are being asked to join a community-wide effort to send in claim forms in one large group representing all the damages in Holt County.

Time is of the essence for filing claims and getting the completed forms organized. In order to have accurate data and to show the magnitude of the flood's impact on this county, pooling the claim forms together from everyone who believes they have damage related to the USACE's actions this spring and summer along the Missouri River in Holt County will be beneficial. The total numbers will be used to illustrate the overall impacts of the flooding while moving forward to seek disaster resources and potentially a class-action lawsuit in the future for damages not covered by other insurance or state and federal

programs. The Holt County Clerk's office has created a packet including the USACE explanation of filing and the Federal Claim Form 95. Packets are available at the offices of the City of Craig, City of Mound City and County Clerk, Oregon. Property owners are asked to return the packet to one of the offices listed above by Friday, August 5, 2011.

One of the many things that the information asks for is pictures of the property before the flood. If landowners do not have these, pictures of homes, buildings, bins, etc., can be picked up at the Holt County Assessor's office. If owners don't have flood pictures, they may potentially be obtained from the Holt County office or from the Big Lake office.

If anyone has any questions, please contact Kathy J. Kunkel, Holt County Clerk, at 660-446-3303; M-F; 9-5.



Denny and Lillian Wright, co-owners of Wright Electric and Hardware in Craig, MO. Stand among buyers at the couple's Retirement Auction held on Saturday and Sunday, July 23-24, at the Heck Implement Building in Mound City, MO. Denny and Lillian, who have owned and operated the business for 25 years, sold all the merchandise after moving it from the business' store front location in Craig because of potential flooding in June.

Wright Electric and Hardware ends quarter century of business

Denny and Lillian Wright, co-owners of Wright Electric and Hardware in Craig, MO, finalized the termination of their nearly 25 year-old business at a going out-of-business/retirement sale in Mound City, MO, on Saturday and Sunday, July 23-24.

Wright Electric and Hardware cleared its inventory from its location on the Main Street of Craig, MO, when the 'threat of 4 feet of floodwater in Craig', caused the Wrights to reconsider just 'moving things up'. The Wrights' children insisted that water that high would greatly extend the damage and that the best thing to do was to move everything completely out, so, on June 6, the Wrights moved out - never to return.

Denny spent 45 years as an electrician, quitting his electrical work just five years ago. He began his electrical training at Northwest Missouri State University in Maryville, MO, and then his practical training as an apprentice with Well's Plumbing and Heating and with Harold Jordan in the 1960's.

Denny's father, Forrest Johnson, who managed the elevator in Craig, would ask Denny and Harold to troubleshoot electrical problems at the elevator. Denny was later

challenged by his dad to complete a cross auger project, by himself. The difficult project propelled Denny with confidence into his own electrical business. Denny ran his business out of his garage for many years, providing electrical and plumbing needs throughout the area. Denny's wife, Lillian, who served as his bookkeeper throughout his electrical/plumbing career, also taught business at the Craig R-3 School before retiring in 2003.

On one of Denny's trips to the C&C Hardware Store in Craig one day, he noticed the merchandise was drastically reduced and, finding that the store was set to sell, contacted Mildred Carlton, owner of C&C Hardware. Because Denny recognized the need for the business in the area, Denny and Lillian purchased the hardware store in 1987. The couple combined their existing electric/plumbing business with the newly purchased hardware and formed Wright Electric and Hardware.

A few years later, Wright Electric and Hardware traded buildings with Mike Whetsel and moved a few buildings down the street. Then, within a decade, an adjacent building was purchased and

the business expanded.

Denny had special projects through the years that he remembers distinctly. Looking back, he wishes that he had taken pictures of many of the jobs he accomplished. Denny's right hand man was Don Twyman, and Denny also had several full-time store clerks and a few fill-in clerks to assist in the day-to-day running of the business over the years.

"Sometimes, you don't miss it until it's gone. It was handy for people and it helped keep the town alive," stated Denny about the business closing. "The potential flood was the determining factor in closing the 25 year-old business."

"Our children will likely be some of the people that miss the store the most," laughed Denny and Lillian. "They knew they could start a project at any time with a 24-7 hardware store at their disposal."

The Wrights had previously begun the process to sell the business, but the flood came faster than the offers so the doors closed permanently in June when the flood moved them out. The closing of Wright Electric and Hardware marks the closing of another era of business in the small town of Craig.

State Theater plans 2011-2012 season

A Branson show, a fun community play, and a Christmas concert by an award-winning chorale are some of the highlights for the State Theater's 2011-12 season in Mound City. The State Theater Arts Council is announcing the line-up for the year as it launches its annual fund drive.

"We feel we have a wonderful variety of quality programs this season," said Linda Boultinghouse, council president.

"We are especially happy to be able to book another popular Branson show," Boultinghouse continued. The Brett Family, which regularly performs at Dick Clark's American Bandstand Theater, will be at the State Theater on April 13, 2012, for an evening of high quality family entertainment. The group is a dynamite ensemble of singers and dancers who perform a variety of music, from classic pop and rock, to country, bluegrass, inspirational, barbershop and patriotic.

The rest of the season features more top-notch entertainment, by both local residents and regional entertainers.

The season began with the annual Community Band concert led by Dave Holland on July 4 and future attractions include:

• Two Movies Under the Stars, one in conjunction with the Holt County "Party in the Park" on Saturday, July 30, at

Griffith Park, and another in August.

• "Love Thy Neighbor" Community Play on Sept. 24-25, a comedy directed by Jan Seitz.

• Annual Anniversary Show on October 22 featuring Shanice and Maurice Hays, a father/daughter vocal duo from Kansas City, MO.

• Community Talent Show on November 19, directed by Jim Brown.

• Children's Christmas Show on December 3 with storyteller Karen Young from St. Louis, MO.

• Dolores Ideker Memorial Christmas Concert on December 10 featuring the Kansas City Chorale, a professional vocal ensemble that's been called "one of the finest choirs in the United States".

• Senior Movie Series, January-March 2012.

• Valentine's Concert on February 11 featuring Zephyr Flute & Harp Duo, Rebecca Dunnell and Jim Palmer, Northwest Missouri State University music educators.

• Brett Family on April 13.

• Wild Heart in May (date to be announced), Emmy Award-winning recording artists and conservationists, Jan and George Syrigos.

• Theater Camp on June 11-22, conducted by Carl Crumb, who teaches theater, stage craft and acting at Atchison, KS, High School.

Mound City
NEWS
Established 1879
(USPS 364-920)
511 State St.
PO Box 175
Mound City, MO 64470
(660) 442-5423
Fax (660) 442-5423

E-mail: moundcitynews@socket.net
www.moundcitynews.com

Adam Johnson
Owner/Publisher

Lisa Yocum, News & Sports Editor

Jessica Lindsay, News & Circulation Manager

Debbie Johnson, Advertising
A.J. Martin, Web Site & News

Member
Missouri Press
Association



\$30 PER YEAR
Holt, Nodaway, Andrew,
and Atchison Counties.

\$35 PER YEAR
Elsewhere In Missouri and
All Other States.

**All Subscriptions Are
Due In January**

Published weekly on
Thursdays and entered as
periodical publication at the
Post Office at Mound City,
Missouri 64470.

POSTMASTER:

Send changes of address to:
Mound City News
PO Box 175
Mound City, MO 64470

Copies available each
week at our office and
at: Craig Country Store,
Craig; Prop In, Big Lake;
Water's Edge, Lakeshore
Grill, Big Lake;
Forest City Diner; Coun-
try Corner and Price's
Grocery, Oregon; The
Smokehouse, Graham;
Skidmore Service,
Skidmore; Rocky's Pit
Stop, Maitland; Mound
City Thriftway, Mound
City Shell, Kwik Zone,
George's C-Store in
Mound City.

Mound City
NEWS
CLASSIFIED ADVERTISING
CALL 660-442-5423

**Barnes
Realty**

is pleased to announce that Billy Paul Sharp has joined our Sales Staff. Stop by the office or give Billy Paul a call. He will be happy to assist you with all your real estate needs.



www.barnesrealty.com
Office: 660-442-3177
Billy Paul: 660-572-0029

News from Tiffany Heights

Residents at Tiffany Heights in Mound City enjoyed the afternoon on Monday, July 18, by playing a couple of guessing games. They did several patriotic style games and all the answers were things that dealt with the 4th of July.

On Tuesday, the residents enjoyed another game of "Jingo". They had an outing planned, but due to extreme weather, had to cancel those plans. This time the residents played "Our Nation's Capitol". The questions were about the capitol and the adjoining city. Winners of the game were Ilene Hendrix, Frances Martin, Arnold Rehm and Lucyle Benne. After jingo, the residents enjoyed shucking corn for a corn on the cob lunch Wednesday. Carol Sisk and family provided the corn.

Wednesday was Lemonade Day. Residents got a chance to squeeze some lemons to make "ade" and they also made some lemonade cookies. The residents had a taste test of peach, strawberry and plain lemonade. Guess they were good "ade" makers because the homemade was the winner. The cookies were good too.

During the walk and roll program this week, Beverly Kimby made four miles, Dora Routh made four miles, and Frances Martin made one mile. The Maitland Christian Church Youth Group visited during the evening on Wednesday. The residents said that they were lucky to have such

a special group of volunteers come and visit.

Thursday was birthday bingo day. This month the Ta Ya Tu club hosted the game. Members provided the residents with a birthday party of cake and punch; the birthday people with special gifts; all the bingo prizes for the game; and assistance with the game. A special thanks to those attending for the club: Kim Rosier, Ann Walker, Ruth Jordan, Chris, Emma, Abby and Audrey Gibson; Kasey and Reese Miles, Maggie Caton and Abby Drew. This month residents with birthdays were Dorothy Egbert, Mary Wilson, Hazel

Rother and Hope Helpers.

If you went on vacation, where would you go? Residents enjoyed playing a game on Friday afternoon called "Score Fifteen". This game uses facts about the fifty states in a grading scale from one to five. Residents got to choose which level to answer. The higher the number the more score one receives. The person reaching fifteen first was the winner. The winner of the game was Alois Wilkinson.

Sunday morning services were provided by Larry Brickley and family. Afternoon worship was conducted by River of Hope Fellowship Church.

Mound City Kiwanis Club news

The Mound City Kiwanis Club met at the United Methodist Church in Mound City, MO, on Wednesday, July 20, 2011, with 17 members and 4 guests present - Gwen Knowles, Jason Knowles, Don Wichern, Missouri Department of Transportation (MoDOT), and Dave Earls (MoDOT).

Don Wichern presented a program about MoDOT's Boulder 5-Year Direction Plan. There was also some discussion about the unknown effects of flooding on the number of highways that are closed and under water.

Robert Gibson briefly talked about Backpack Buddies for the upcoming school year - more will be discussed in the next few weeks. Plans will be final-

ized next week concerning the Party in the Park event the end of the month in Griffith Park.

Kiwanis members received a thank you from Dr. Laurel K. Vartabedian, President of Missouri Western State University, thanking the Kiwanis for last week's opportunity to visit with the Kiwanis along with his wife, Varta, and Vice-President, Dan J. Nicoson. The Kiwanis also received a thank you from Jeff Atkins for sponsoring him at Missouri Boys' State. The Kiwanis Club received a Certificate of Appreciation from the Pony Express Council of the Boy Scouts of America for the Kiwanis partnering with the Boy Scouts and chartered Pack 71 of the Oteo District for the past 10 years.

Notes from the nutrition site

Volunteers at the Nutrition Site in Mound City during the week of July 18, 2011, were: Addie Trimmer, Lela Boyd, Linda Elton, Bill and Donna Golden, Carolyn Roberts, Yogi Swymeler, Sandra Cowherd, Virginia Oppenlander, Shelley Oppenlander, Erma Oppenlander, Abby Haer, Lauren Loucks, Herb and Mary Ann Beggs, Marla Riley, Paul Grant Sr. and Jr., Wyatt and Debby Dougherty, Tammy Paulson, Art Davis, Marta and Mallory Burton, Phyllis Ball, Keith Knaak, Lucille Stull, Dottie Biermann, Roma Chaney, Marj Field, Marg Yocum, Mary Belle Carter, Marilyn Robbins, Lois Deatz and Bob Justus.

Sharing their gardens were Clement Produce, Greg Clement Auctions and Dave and Shirley Jackson.

Delivering meals the week of August 1, 2011, will be:

Craig - No clients.

Mound City - Monday and Tuesday - Larry and Carol Brickley; Wednesday - Home School Kids; and Thursday and Friday - Tiffany Heights.

Oregon and Forest City - Monday through Friday - Faith Fellowship Church will deliver both.

A birthday party was held on Wednesday, July 20, sponsored by friends of the site. Red (strawberries), white (iced pretzels) and blue (blueberries) fruit bowls were given to Dorothy Thurnau, Julia Gilland, Opal Gorman, James Haer, Phyllis Smith and Glen Brown who all celebrated birthdays in July. Drawings were won by Loretta Morris, Maurice Smith, Marj Field, Chet Caton, Bonnie Scarbrough and Bev Haer. "Happy



Bob Justus of Mound City, MO - Did some much needed painting and trimming at the Mound City Nutrition Site on Wednesday and Thursday, July 20 and 21.

"Birthday" was sung to the honored guests. The cake was baked by Kathryn Swymeler. Helpers were Lela Boyd and Ida Soto. The Wednesday, August 17, birthday party will be sponsored by TOPS #1163.

The Mound City Nutrition Site has a dumpster in the parking lot to recycle bagged paper, bagged plastic and cardboard (broken down). The site also recycles cell phones, ink cartridges, aluminum cans for cancer (Helping Hand) in two purple cans by the front door, and VHS tapes for MERIL (Independent Living). There are also drop boxes for donations for the food pantry; and labels and box tops for the school.

The July product of the month is coffee. The drawing will be on July 29. The August products of the month are sugar and flour.

Upcoming activities at the Mound City Nutrition Site are:
August 1 - Exercises, 8:30 a.m.
August 2 - Walk at the football track, 6:30 a.m., let's beat the heat.
August 3 - Exercises from 8:30 to 9:30 a.m.; Show and Tell - Cake decorating with Alita Meyer and Shelby Eaton, decorate your own cake from 10:00 a.m. to 12:30 p.m.
August 4 - Walk at the football track, 6:30 a.m., let's beat the heat.
August 5 - Cinnamon rolls and donuts, 8:30 a.m. until gone.

If anyone can volunteer with preparing or serving cinnamon rolls and/or donuts,



Northwest Holt Fire Protection District - Received a \$667 check from the Missouri Department of Conservation Forestry Division as part of the VFA Fire Department Matching Grant Program. Steve Wright, right, accepted the check from Caleb Gentry, left, in mid-July.



Maitland, MO, Rural Volunteer Fire Department members - Received a \$3,000 check from the Missouri Department of Conservation Forestry Division as part of the VFA Fire Department Matching Grant Program. Accepting the check for the Maitland Fire Department from Caleb Gentry, right, is Scott Gallagher, left, and Bryan Markt, center.

Local fire departments receive matching fund grant money

The Volunteer Fire Assistance (VFA) Fire Department Matching Grant Program recently distributed funds to two local fire department programs. The Maitland, MO, Rural Volunteer Fire Department received a \$3,000 check and the Northwest Holt Fire Protection District received a \$667 check from the Missouri Department of Conservation Forestry Division staff member, Caleb Gentry, made the presentations to the two districts.

Fire departments are required to match these funds which are provided by the U.S. Forest Service and the Missouri Department of Conservation. The Maitland Rural Volunteer Fire Department used the match-

ing grant to purchase a skid unit for the district's 4-wheel drive pickup. The unit will be used to fight land grass fires. The Northwest Holt Fire Protection District used the funds to purchase two additional radios and a chain saw.

During June, July and August, 180 fire departments are receiving checks of up to \$3,000 to help them with the purchase of personal protective gear and firefighting equipment, for wildfires as well as structure fires. The total funding for fire department matching grants this year is \$378,264.

During the last 28 years, nearly \$6,282,693 has been distributed to Rural Fire Departments to help them increase the safety of their fighters and provide them with better firefighting equipment.

Schedule released for USDA flood informational meeting

The Holt County USDA agencies are hosting a flood informational meeting on Thursday, August 4, 2011, at the Squaw Creek National Wildlife Refuge near Mound City from 1:00 p.m. to 3:30 p.m. Refreshments will be provided by the Holt County Soil and Water Conservation District.

The purpose of the meeting is to present information and discuss issues that are pertinent to the flood disaster in Holt County as it pertains to crop and land losses.

The schedule for the meeting is as follows:

1:00-1:05 p.m., Welcome - Bruce Biermann, MASWCD Area 1 Director and Holt SWCD Board Member

1:05-1:15 p.m., Missouri Department of Agriculture - Dr. Jon Hagler, Director

1:15-1:45 p.m., Farm Service Agency - Jim Nance, FSA District Director; Corey Leshner, FSA County Executive Director; Bob Dreyer, FSA Farm Loan Manager

1:45-2:00 p.m., Natural Resources Conservation Service - J.R. Flores, State Conservationist

2:00-2:30 p.m., Risk Management Agency - Rebecca Davis, Director, Topeka Regional Office

2:30-2:45 p.m., Rural Development - Janie Dunning, State Director

2:45-3:30 p.m., Audience Questions - Pat Hufford, NRCS Area Conservationist, and Jim Nance, FSA District Director

3:30 p.m., Closing Remarks - Gerald Hrdina, FSA Conservation Program Specialist

Little Toys For Old Boys

Rueford Kennedy

email: littletoysforoldboys@live.com
www.littletoysforoldboys.com



49.9 cc
Motor;
Need Valid
Driver's License.



660-853-9336
660-853-0342

1929 S. Main St.
Maryville, MO
64468

OPEN

Mon. & Tues. - 10 a.m. - 4 p.m.; Thurs. & Fri. - 10 a.m. - 4 p.m.; Saturday - 10 a.m. - 4 p.m.

CLOSED

Sunday & Wednesday

Tiffany Heights Nursing Home and TCC Rehab Services

1531 Nebraska St., Mound City, MO 64470

RESIDENT OF THE MONTH



DOROTHY EGBERT

Dorothy Egbert is this month's resident of the month at Tiffany Heights. She has been at Tiffany Heights since June of this year.

Dorothy is 92 years old and has one daughter and three sons.

Dorothy recently celebrated her 92nd birthday with family and friends at Tiffany Heights.

The staff says Dorothy is "a wonderful lady".

Call: 660-442-3146

for info on care and rehab services offered to you from Tiffany Heights Nursing Home.

Chamberlain Funeral Home & Monuments

1705 Ridge Drive
Mound City, MO

442-5300



John Allen Norris

Kenesaw resident, John "Allen" Norris, 89, died Saturday, July 23, 2011, in Kenesaw, NE. Services were held Wednesday, July 27, at 10:30 a.m. at the Kenesaw United Methodist Church in Kenesaw. On Thursday, July 28, family visitation will be held from 2:00 to 3:00 p.m. at the Pettijohn & Crawford Family Funeral Service Chapel in Mound City. Burial will follow at the Mt. Hope Cemetery, Mound City. Condolences may be sent to the family at www.brandwilson.com.

Allen and his twin, James "Albert", were born on a farm near Mound City, on January 24, 1922, to Orville and Nevada (Carder) Norris. A 1939 graduate of Mound City High School, Allen's subsequent farming career was cut short by WWII, which prompted the twins to immediately enlist in the U.S. Navy, serving together aboard the USS Walker as machinist mates. "Red", as his shipmates called him, was put in charge of the ship's diesel engines, serving in the Atlantic and Pacific theatres. An avid participant in the USS Kidd Association reunions (DESRON 48 Squadron) for the last fifteen years, Allen also served as honorary ship's captain.

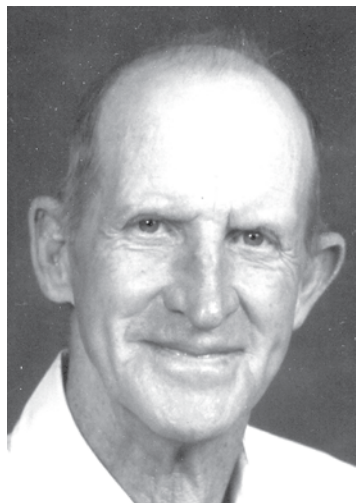
After the war, Allen farmed in northwest Missouri, then went on to graduate from NU with a BS in Agriculture in 1953. He joined First National Bank, Lincoln, NE, in 1960, in a farm management capacity based out of Axtell, NE, and, in 1965, became Vice-President and Agricultural Representative in the Correspondent Bank Department in Lincoln. In that capacity he traveled statewide managing relationships with numerous out of state banks. In 1966, Allen graduated from the University of Colorado, School of Banking. Allen moved to Kenesaw in 1967 where he became an officer with Adams County Bank until his retirement. Allen also raised cattle and operated a hay baling business with son, Dale.

Allen served as a board member for the Deluxe Manufacturing Company in Kearney, NE; Packers' National Bank of Omaha, NE; and Adams County Bank, Kenesaw. He was also past president of the South Platte Chamber of Commerce and the Kenesaw and Mound City, MO, chapters of the American Legion and longtime member of the Nebraska Bankers' Association.

Along with golf in any form, Allen greatly enjoyed sharing and assembling golf clubs, coaching American Legion baseball, working out at the Kenesaw Fitness Center, gardening, hunting, bowling and watching NU women's volleyball and his grandson's hockey games. In later years, Allen and his wife, Bette, also became "snowbirds" along the beaches of Gulf Shores, AL, during the winter months. Allen attended the United Methodist Church of Kenesaw.

Allen is survived by his wife of nearly 60 years, Bette (McKown); children, Cathy Norris of Lone Tree, CO, Dale Norris of Lenexa, KS, Janet Elaine Barber of Douglas, NE, and Lee Thieszen of Aurora, NE; nine grandchildren; two great-grandchildren; and numerous nieces, nephews and countless friends that Allen considered family just the same.

In lieu of flowers, contributions may be given to the United Methodist Church, Kenesaw Public School Foundation, Kenesaw Baseball/Softball Association or the Mound City American Legion Post.



Charles C. Swymeler

Charles Clinton Swymeler of Mound City died Saturday, July 23, 2011, at age 99. He was born October 11, 1911, to George and Mina Swymeler in Holt County, MO. He graduated from Bigelow, MO, High School. On March 18, 1939, he married Ruth Elaine Kline of Maitland, MO. They lived two years at Mirabel, MO, on a farm and then spent more than 60 years farming in the Fillmore, MO, area.

Charles was a member of the Antioch Church, Fillmore. He retired from road construction with 22 years of service. He was a charter member of the Fillmore Saddle Club and the Fillmore Lions Club. He served on the Clay Center School Board for fifteen years, the Andrew County School Board for 6 years, Fillmore Water Board and the South Bethel Cemetery Board in Holt County.

Charles was preceded in death by his parents, George and Mina Swymeler; brothers, Clabourn, Henry and Earl Swymeler; sister, Esther Schweikhardt; and great-grandson, Matthew Swymeler.

Survivors include Charles' wife; two sons, Ronald Swymeler, Woodburn, IN, and Rodney "Yogi" Swymeler, Mound City, MO; two daughters, Joyce Drydale, Wichita, KS, and Gaynell Waggoner, Franklin, IN; 11 grandchildren; and 24 great-grandchildren.

Services were held on Tuesday, July 26, at 10:00 a.m. at Pettijohn & Crawford Funeral Home in Mound City. Interment was held at the South Bethel Cemetery, south of Mound City.

Viola Fern Simmons

Viola Fern Simmons, 81, of Fairfax, MO, passed away Wednesday, July 20, 2011. Fern was born in Langdon, MO, on April 28, 1930. She was one of three children born to Harry and Helen (Brewer) Tudor.

At the age of three, Fern's family moved to a farm north of Corning, MO, where she grew up. She attended school in Corning for eight years, finishing her high school years at the Rock Port, MO, High School. Fern graduated with the class of 1948.

On July 29, 1949, Fern became the wife of Norman Simmons and they made their home in the Fairfax. They became the parents of six children. They celebrated their 61st wedding anniversary on July 29, 2010.

Fern loved to do crafts. She participated in the annual Clarinda, IA, craft show for the past 38 years. She enjoyed playing cards, as she belonged to the TEC Club, KEC Club and Milton Club. Fern worked at Community Hospital for 22 years after working at the Fairfax Walnut Shop. She was a longtime member of the Christian Church in Fairfax. Fern cherished her family with all her heart. Fern especially loved to watch her grandchildren and great-grandchildren participate in all their various activities. This gave Fern great joy.

Fern was preceded in death by her parents and her brother, Charles Tudor. Fern is survived by her husband, Norman; sons, Terry (Barbie) Simmons, Teddy (Vickie) Simmons and Barry (Lyn) Simmons; daughters, Sharon (David) Wynn, Karen (Chris) Easley and Brenda (Donnie) Brandt; 17 grandchildren; and numerous great-grandchildren.

Graveside services and burial were held on Saturday, July 23, 2011, at English Grove Cemetery, near Fairfax. Rev. Andy Braams officiated. Services were under the direction of Schooler Funeral Home, Fairfax. Memorials may be directed to the Fairfax Christian Church, Fairfax Booster Club or the American Cancer Society.

73rd Atchison-Holt Electric Cooperative annual meeting to be held July 28

The Atchison-Holt Electric Cooperative 73rd Annual Meeting will be held Thursday, July 28, at the Rock Port City Park in Rock Port, MO. Registration will be held from 5 p.m. to 7 p.m.

Free swimming passes for the Rock Port pool will be available at the registration desk. A meal will be served from 5:30 p.m. to 6:30 p.m., with entertainment following by American Pie, featuring Randy and Kathy Burris. The business meeting and drawing of prizes will begin at 7:00 p.m.

STATE THEATER ARTS COUNCIL HOLDS ANNUAL MEETING - ELECTS OFFICERS

The State Theater Arts Council in Mound City elected officers at its annual meeting on Tuesday, July 19, and began filling vacant board slots. Linda Boultinghouse was re-elected president, Mari Ferguson was elected vice-president, and Melinda Tally will assume the secretary's duties as well as continue as treasurer.

Donna Kunkel was named to the board, filling one of two vacant seats. Other board members are Stan Seitz, Barb Heitman, Wava Duncan, Elaine Bledsoe, Kris Gibson, Roger Rowlett and Sandra Fuhrman. Completing terms and going off the board were Brenda Haines and Kristy Reedy.

In regular session, members discussed the annual fund drive, this year's Missouri Arts Council grant, final details of programs for this season and maintenance issues.

Rehearsals will start Monday, August 1, for a community play to be presented September 24-25, and directed by Jan Seitz.

Painting of auditorium walls at the theater was completed Friday, July 22. The board will seek a Missouri Arts Council grant to help pay half the cost of new stage floor covering, and the painting of stage walls and lobby area.

Discussion was held about long-term plans to remodel to make a larger women's restroom out of the present men's restroom and office area. The present women's restroom would become the men's bathroom. It is a much-needed project, with long lines often forming for the present one-toilet women's bathroom. The hope is that the project can be done next summer.

Fundraising starts for new theater year

The State Theater in Mound City has started its annual fund drive. The theater board is seeking help from area businesses, clubs and individuals to support programming and operating expenses for the 2011-2012 season.

"We rely heavily on local support to keep the theater operating, and have been very fortunate this community has been so generous in the past," applauded Linda Boultinghouse, president of the State Theater Arts Council board. "We are hoping that same kind of support will continue. I think area residents are very proud of their theater - it's a real community treasure - and they know they play a big role in making it possible to provide quality entertainment and cultural opportunities here."

The theater receives an annual grant from the Missouri Arts Council (MAC), but the grant only helps with a portion of artists' fees and related programming expenses. Local support pays the other portion, plus other costs, such as utilities, repairs and insurance.

Local support is even more critical this year, since the theater was notified last week

it will receive only \$7,143 from MAC, down from last year's \$11,652. MAC indicated the main reason for the decline is that MAC experienced a half-million dollars more in requests than the year before and had less money to distribute, so no group got all it asked for.

The theater was praised for its "good variety of performing arts" and "excellent community support".

The theater board is grateful to those who have faithfully supported the theater over the years, and others are urged to join in helping keep this great community asset going.

Individual season tickets are \$75 per seat. Membership levels include: Contributor, up to \$199 (no season ticket); Benefactor \$200-\$299 (includes 2 season tickets); Patron \$300-\$599 (includes 3 season tickets); Angel \$600 and over (includes 4 season tickets).

Donations or season ticket payments can be sent to State Theater Arts Council, P.O. Box 11, Mound City, MO 64470, or can be dropped off at the Nodaway Valley Bank in Mound City. Make checks payable to State Theater Arts Council.

In addition, the theater is seeking sponsors for each program - support that helps make events affordable. Any questions, or those desiring to sponsor a program, may contact Linda Boultinghouse at 660-442-6224 or 442-3408, or Wava Duncan at 660-442-3374.

Vehicle strikes deer, driver receives minor injuries

Minor injuries were sustained in a one-vehicle accident at 5:40 a.m. on Tuesday, July 26, 2011, on MO 111 .1 mile north of Forest City, MO. A 2004 Ford Crown Victoria, driven by Robert L. Russell of Forest City, was northbound on MO 111, responding to a domestic call. The vehicle struck a deer in the northbound lane, travelled off the east side of the roadway and struck a sign. The vehicle then came back onto the roadway and came to a stop.

Russell received minor injuries in the accident and was treated at the scene. The driver was wearing his seat belt.

The accident was investigated by Trooper J. L. White of the Missouri State Highway Patrol with assistance from Trooper A. S. Rice. The vehicle was totaled and was towed from the scene by R & W.



NEW HAIR STYLIST

AfterLooks would like to welcome to the salon, Amanda Fansher. Amanda has been a stylist for ten years. Her recent employer included managing haircolorxperts Salon in St. Joseph, MO, where she took several hair color classes from top notch stylists. Amanda graduated from South Holt High School and now lives in Oregon with her husband and three children.

Stop by or call for an appointment.

AfterLooks is now offering feather hair extensions, Bling strands (get your school colors) and Bling jewels for those special occasions.

107 West 7th Street Mound City



Hours: Tuesday-Saturday 9:00 a.m.-?

Call or come in for appointment 442-5745

DAKOTA BRONC SISK 5TH ANNUAL MEMORIAL RODEO
 AUGUST 12 & 13, 2011
 BARNARD, MO
 Located on Highway A

ADMISSION
 \$12 per person
 \$5 for 12 & under
 5 & under free

6:00 MEAL (6:00 - 8:00) (MEAL INCLUDED WITH ADMISSION)
 7:00 MINI RODEO
 8:00 OPEN RODEO

MINI RODEO CONTESTANTS
 MUTTON BUSTIN BARREL RACING STEER RIDING
 CALL IN CALL CODY SISK @ 660-853-8423
 ANYTIME 9AM-9PM BY JULY 26TH

OPEN CONTESTANTS
 CALL IN CALL CODY SISK @ 660-853-8423
 ANYTIME 9AM-9PM ON JULY 26TH TO ENTER (FEES \$65)
 AROUND MONEY: ROPING STOCK - \$500 EACH NIGHT
 CR, O40, GBR, BA, SW - \$250
 TEAM ROPING/EACH END - \$250

WWW.MEMORIALRODEO.COM

Your Full-Service Memorialist Since 1935

- Monuments
- Markers
- Mausoleums
- Plaques
- Lettering
- Cleaning
- Custom Designing

Van Vickle Monuments
 1717 Frederick St. Joseph Toll Free 1-877-232-5882

WRIGHT ELECTRIC & HARDWARE

For nearly 25 years, it has been our pleasure to provide the electrical, plumbing, and hardware needs for the Craig community and surrounding area through Wright Electric & Hardware.

We have had many loyal customers and employees during this time for which we are truly grateful. June 10, 2011, was the last day of business. Due to the impending flood, the decision was made to remove the inventory and close the store resulting in a "retirement" auction.

Retiring from the hardware business was not an easy decision, but with the help of family, friends, and a dedicated auction crew, we had a successful sale that made our retirement from the hardware business much easier. We extend our appreciation to each of you who contributed in any way to a wonderful auction and to our customers who were so vital to our success at Wright Electric & Hardware.

Sincerely, Dennis & Lillian Wright

HP PEO meeting

Chapter HP P.E.O. will meet Wednesday, August 3, at 2:00 p.m. at the home of Iva VanDeventer in Mound City. Jeanie Young will serve as hostess and Iva VanDeventer will present the program, "Remembering Grade School".

Area Church Information

BIG LAKE

Big Lake Baptist Church
213 Lake Shore Dr. • *Dick Lionberger, Pastor*
Sunday School, 9:30 a.m.
Worship, 10:30 a.m.

CORNING

St. John's Lutheran Church
112 Walters Street
Worship Service will be held at the Concordia Lutheran Church in Mound City

CRAIG

Craig Presbyterian Church
No Worship Service until further notice

Sharp's Grove United Methodist Church
4.5 mi. north of Craig on Hwy. 59 • *Rev. Crystal Karr*
Worship Service, 8:45 a.m.

Craig Community Church of the Nazarene
105 S. Ensworth Street • *Keith Knaak, Pastor*
Sunday School, 10 a.m., Worship Service, 11 a.m.
Wed. Night Bible Study, 5:30 p.m., Wed. Kingdom Kids, 3:30-5:00 p.m.,
Wed. Night Youth Group, 6:30-8:00 p.m.

Church of God
Sunday School, 10:00 a.m., Worship, 11:00 a.m.

St. Peter's Lutheran Church
Closed- Worship at Concordia Lutheran Church in Mound City

FILLMORE

The Lighthouse
Exit 65 on I-29 • *Pastors Tim and Faith Uzzle*
Sunday Worship: 10 a.m., Thurs. Bible Study: 7 p.m.
www.fillmorelighthousechurch.org

GRAHAM

Graham Union Church
Sunday School, 9:30 a.m., Morning Worship, 10:30 a.m.
Evening Service, 6:30 p.m., Wednesday night, 7 p.m.

United Methodist Church
Connie Ury, Pastor
Sunday School, 9 a.m., Worship, 10:15 a.m.

MAITLAND

First Christian Church
4th and Ash • *Bill Gazaway, Pastor*
Sunday School, 9:15 a.m., Worship Service, 10 a.m.
Sunday Night Worship, 7 p.m., Wed., Youth Rallies, 7 p.m.

United Methodist Church
217 S. Maple Avenue • *Connie Ury, Pastor*
Worship Service, 9 a.m.

MOUND CITY

Community of Christ
1410 Nebraska Street • *Theresa Mackey, Pastor* 660-446-2048
Sunday School, 10 a.m., Worship Service, 11 a.m.

Christian Fellowship
18080 Hwy. 59 • *Jim Brown, Minister*
Sunday School, 9:30 a.m., Worship Service, 10:30 a.m.
Senior High Youth, 7:00 p.m. • www.christian-fellowship.net

Concordia Lutheran Church
Worship Service, 10:30 a.m.
Bible Class or Sunday School, 9:15 a.m.,

First Christian Church
402 E. 5th Street • *Paul Grant, Pastor*
Sunday School, 9:30 a.m., Worship, 10:30 a.m.

Mound City Baptist Church
1308 Savannah Street • *Pastor James Waller*
Sunday School, 10:15 a.m., Worship Service, 11:15 a.m.
Tuesday Bible Study, Larry Brickley, 6:30 p.m.;
SI@M City Youth Group, 6:30 p.m. - 816-616-0347

Mound City United Methodist Church
312 E. 7th St. • *Pastor Crystal Karr*
Sunday School, 9 a.m., Sunday Service, 10 a.m.

New Liberty Baptist Church
County Road 140 • *Dr. Everett Walden, Pastor*
Sunday School, 9:45 a.m., Worship, 10:30 a.m.

New Life Apostolic Assembly
U.P.C.I. - 307 E. 6th, Mound City • *Pastor Scott Jordan*
Worship Service, 11 a.m.
Life Night Bible Study & Revolution Youth Group
Thursdays, 6:30 p.m.
www.newlifeapostolicassembly.org - 660-442-3441

OREGON

St. Patrick's Catholic Church
303 Grand, Forest City • *Father Peter Ullrich, OSB*
Pastor and Parish Administrator

Oregon Church of the Nazarene
207 W. George • *Keith Knaak, Pastor*
Sunday School, 8 a.m., Worship Service, 9 a.m.

New Point Christian Church
24135 Stone Hill Rd. • *Brian Buck, Minister*
Sunday School, 9:30 a.m., Worship, 10:30 a.m.
Fellowship Dinner, 4th Sunday of month following church

REGIONAL

River of Hope Fellowship
Presently meeting at: 304 East 4th St., Mound City
442-0197 or 442-6305 • *Pastor David Showalter*
Sunday School, 9:15 a.m., Worship, 10:30 a.m.

SKIDMORE

St. Oswald's-in-the-Fields Episcopal Church
30996 X Avenue, Skidmore, MO
2nd Sundays - 11 a.m., Morning Prayer service by Lay Reader
4th Sundays - 11 a.m., Eucharist Service

Holt County AEL instructor completes professional development

Sandra Cowherd, Holt County Adult Education and Literacy (AEL) instructor, completed training courses held in St. Joseph and Kansas City, MO, Wednesday through Friday, July 20-22. The classes were offered by Missouri's AEL Professional Development Center (MAELPDC). The three-day training covered English as a Second Language (ESL), Science and Social Studies, and Differentiated Instruction.

"The workshops energized me for my second year of AEL teaching in Holt County. I learned wonderful techniques from these presentations and other teachers throughout Missouri. I am so excited to put these new tools to work for my students," Cowherd said.



Norma Davis turns 80

Norma Davis will observe her 80th birthday on Monday, August 8. She lives in St. Joseph, MO, and has five daughters: Linda Bishop and Diana and Emmett Flora, all of St. Joseph; Cindy and Bill Stone of Savannah, MO; Charla and Phillip Graves, Corning, MO; and Susan Hatten, Chicago, IL.

Norma's family is hosting a cake reception from 2 p.m. to 4 p.m., Sunday, August 7, at Country Squire Club House, 1314 N. 43rd St. (43rd and Buckingham streets) in St. Joseph. Family and friends are invited to share in celebration on her special day. No gifts, please. Cards are welcome.



Summer reading program hosts Native American Family Folklore Workshop at the refuge

The Mound City Public Library's One World, Many Stories summer reading program hosted a Native American Indian Family Folklore Workshop on Wednesday, July 20, at the Squaw Creek Refuge near Mound City.

The guest speakers included Marla Burnside along with Donnie and Dixie Wright. Marla Burnside came to represent and share traditions of the Ioway Indian tribe. Donnie Wright was in attendance representing and sharing about the Kiowa Indian tribe. Thirty-two people attended the folklore workshop. Both Mr. Wright and Mrs. Burnside intrigued reading participants with traditional storytelling, artifacts, and bead work. Each participant created either a bracelet, necklace, or belt that they got to take home with them as a souvenir. The workshop was recorded on video and will be available for viewing on the public library's website.

After the workshop concluded, teen program volun-

Cowherd works as a satellite teacher preparing students for the GED test, college entrance exams, and citizenship. During the 2010-2011 school year, 15 students attended the class with one obtaining a GED certificate.

"My graduate owes her success to herself ultimately. She attended class regularly and actively participated in learning, asking questions and taking work home," Cowherd said. "Several others in my class could have tested successfully, but she was the only one that took the test."

Classes will start Monday, September 12, and are scheduled each Monday through May from 5:30 p.m. to 8 p.m. at the Mound City Nutrition Site in Mound City. More information may be obtained by calling 660-582-5615 or 816-590-3467.

Moderate injuries in accident

A 9:35 a.m. accident on Saturday, July 23, 2011, totaled a 2000 Pontiac on County Road 223, half a mile south of Mound City, MO. The vehicle was northbound on County Road 223 and failed to negotiate a curve. The vehicle ran off the east side of the roadway and struck two culverts.

Ernestine G. Fitzgerald, age 50, of Craig, MO, who was driving the vehicle, received moderate injuries in the accident. She was taken to Heartland Regional Medical Center in St. Joseph, MO, by Atchison-Holt Ambulance. She was wearing her seat belt.

Trooper A.S. Rice of the Missouri State Highway Patrol investigated the accident. Tpr. Rice was assisted by Cpl. M.D. Atkins and the Atchison-Holt Ambulance.



Bob and Linda Sipes to celebrate 50th wedding anniversary

Bob and Linda Sipes of rural Big Lake, MO, are celebrating their 50th wedding anniversary. They were married July 29, 1961. Their children are Robbie and Tracy Sipes of Big Lake and Susan and Terry Ecker of Elmo, MO. Grandchildren include Ryan, Jordan and Kelsie Sipes and Jared and Ashley Haer. Bob and Linda are lifelong members of the Big Lake Baptist Church. Bob was employed as a Soil Conservationist with USDA

from 1978-2000 and Linda retired as Holt County Director of Community Services in 2005 where she served for 35 years. There will be a reception held Saturday, August 6, at 7 p.m. at Paradise Park in Oregon, MO, hosted by the Sipes' children and grandchildren. Friends and family are invited to join the celebration. Cards can be sent to 22541 Driftwood Drive, Craig, MO 64437.



Brian Thompson and Abbey Emmett

Emmett and Thompson announce engagement and upcoming wedding

Abbey Christine Emmett and Brian Kent Thompson are pleased to announce their engagement and upcoming marriage.

Abbey is the daughter of Joshua "Ray" and Carol Armstrong of Cameron, MO, and the granddaughter of the late Robert and Ila Arthur, formerly of Cameron, MO.

Brian is the son of Rosann Thompson and the late Kent Thompson of Cameron and the grandson of Carolyn Kent and the late Gene Kent of Mound City, MO, and the late Jim and Peggy Thompson, formerly of Cameron.

Abbey is a 2002 graduate of Cameron High School and a 2011 graduate of North

Central Missouri College. She is currently employed as a Registered Nurse at Cameron Regional Medical Center in Cameron.

Brian is a 2001 graduate of Cameron High School. He is involved in the family business, Poland-Thompson Funeral Home in Cameron, and manages the family farm in DeKalb County.

The couple will be united in marriage in a private family ceremony on Saturday, August 20, 2011, at the Cameron United Methodist Church. Friends and relatives are invited to the wedding reception at 7:00 p.m. on Saturday, August 20, 2011, at the Old Middle School, Cameron.

Missouri Prayer to meet July 31 at the River of Hope Fellowship Church

Missouri Prayer will meet this Sunday, July 31, at 6:00 p.m. at the River of Hope Fellowship Church in Mound City, MO. Missouri Prayer is part of a national network that joins believers from all denominations to pray for the nation, states, counties and cities.

This month the speaker will be Ruth Matthews from Breakthrough Global Missions. Ruth has taught about prayer across the nation and in many countries in Europe. She and her husband have a mission base in Bratislava, Slovakia. She will be teaching on strategic prayer (praying from heaven to earth). Her CD series on strategic prayer will be available at a discount price for all who are interested. Please come and join in for the teaching as well as the prayer time.

INSIDE OUT & UPSIDE DOWN ON MAIN STREET

SEE WHAT'S HAPPENING...

GRATITUDE

COMPASSION

FORGIVENESS

GRACE

FAMILY VALUES

TRUST

ON MAIN STREET VACATION BIBLE SCHOOL

August 1-5, 2011

Mound City First Christian Church

402 E. 5th St., Mound City

6:00 - 8:30 p.m.

Ages 3-12th grade

- Meet new friends, and learn how YOU can make a difference through the Parables of Jesus!
- Special "Off-Site" Program for Middle School, Jr. High and High School!
- Friday Night "Parent Participation" and BBQ Dinner!

For more information or to pre-register call 660-442-3104 or 660-442-6416



How the planned combination of AT&T and T-Mobile will benefit Missouri:

Over 97% of Missouri residents, including many in small towns and rural areas, will be covered by the LTE network.

More than 1.5 million additional people living in Missouri will gain access to LTE.

An additional 40,000 square miles of the state will be covered by the LTE network.

Together, we will bring the latest mobile broadband technology to more of

Missouri

Mobile broadband is taking another major step forward. The network technology is called LTE and it's a super-fast way to connect to the Internet.

The planned combination of AT&T and T-Mobile will allow us to expand our LTE mobile broadband network to reach more of Missouri.

Our customers will get a stronger network. The state will get a new choice for broadband. And more of Missouri will get access to a cutting-edge wireless network and all the opportunities it brings.



MobilizeEverything.com

Prairie breeding grounds soaked, duck population at all-time high

Duck hunters will find plenty to cheer about in the annual breeding population and habitat survey, which was released recently.

Conducted each May by the U.S. Fish and Wildlife Service and the Canadian Wildlife Service, this year's survey reveals the second-highest pond count and a record 45.6 million ducks, the most since the survey was started in 1955. Blue-winged teal, shovellers and redheads soared to record levels, and if that's not enough, mallard, pintail, canvasback and gadwall numbers rose substantially from 2010.

Not all is well across the U.S. and Canadian prairies, however. While water is great for ducks, excessive snowpack and heavy spring rains produced extreme flooding across much of the prairie breeding grounds. From the Canadian prairies to the Dakotas and eastern Montana, tens of thousands of homeowners have been displaced by swollen rivers, millions of acres of cropland remain unplanted and hundreds of miles of roads are under water.

"Our hearts go out to all those affected by flooding this spring," says Delta President Rob Olson. "This has been an indescribable hardship for the people living in the Prairie Pothole Region."

The closely watched May pond total, the second-highest ever, doesn't do justice to the unprecedented flooding still terrorizing residents of the breeding grounds. Across the U.S. side of the region, the last three years have been the wettest since pond counts began. The 3.2 million ponds inventoried in

the U.S. this spring were the most on record.

The 4.9 million ponds in prairie Canada were 43 percent more than the long-term average, which dates back to 1955, and brings the total pond count across the traditional survey area to 8.1 million, second only to the 8.3 million recorded in 1974.

Not surprisingly, all that water attracted a record number of ducks. The 12.5 million breeding ducks that settled in the eastern half of the Dakotas was the most ever, and was 172 percent above average.

The Canadian prairies got drenched this year and, accordingly, attracted significantly more ducks than last year: Alberta saw a 60 percent jump in pond numbers and 66 percent more ducks, Manitoba was 72 percent wetter with 41 percent more ducks and Saskatchewan's pond count rose 18 percent and attracted 56 percent more ducks.

Olson was quick to point out that wet conditions don't create more ducks, they just attract birds that, on dry years, would settle elsewhere. "The bush country is empty because all the birds are having a party on the prairies," he says.

Species reaching all-time highs include blue-winged teal at a whopping 8.9 million, northern shovellers at 4.6 million and redheads with 1.4 million. Mallards improved to 9.2 million; pintails jumped to 4.4 million, the highest level since 1980; gadwalls rose to 3.3 million; canvasbacks climbed to 692,000; and scaup improved slightly to 4.3 million.

Dr. Frank Rohwer, Delta

Waterfowl's scientific director, says the uninterrupted wet cycle that began in the U.S. in 1994 is only part of the reason duck numbers have skyrocketed in recent years, citing millions of acres of dense nesting cover provided by the Conservation Reserve Program (CRP) and an outbreak of mange that has kept fox numbers in check as other important factors.

"The eastern Dakotas have become the mecca for prairie ducks," says Rohwer, a Louisiana State University professor who admits he's excited about the coming hunting season. "Pintails have reversed their long-term decline, driven largely by very high counts in the eastern Dakotas. Blue-winged teal are off the charts--yikes. Shovellers are at an all-time high and gadwalls and mallards are up."

To demonstrate his point about productivity in the U.S., Dr. Rohwer did some back-of-the-envelope calculations based on the survey results. "I added up the number of mallards, gadwalls and blue-winged teal for each region and divided them by the pond counts to get a pairs-per-pond figure," he says.

"The eastern Dakotas had 3.7 pairs per pond, while southern Saskatchewan had just 1.78. Southern Manitoba and Alberta were slightly lower than Saskatchewan."

Rohwer's calculations explain why flooding isn't the only reason for long faces on the breeding grounds: Waterfowl managers are increasingly concerned about the long-term ability of the U.S. prairies to produce ducks in light of budget cuts being

considered by Congress. If approved, those cuts could put CRP and numerous other conservation programs responsible for this year's eye-popping numbers at risk.

"Mother Nature has dealt the pothole region a winning hand with all this water," says Delta Senior Vice-President John Devney. "When the prairies get this wet, it sets off a chain reaction of positive outcomes--an abundance of small wetlands attracts more ducks to prime breeding areas, and those ducks are more inclined to re-nest and brood survival increases. Re-nesting is important because it offsets predation."

"The U.S. prairies won't stay wet forever, however, and if we continue to lose CRP, native grasslands and wetlands, duck numbers could go down even faster and more dramatically than they've come up in recent years. Worse, without adequate nesting cover, populations will be slower to recover."

The importance of CRP on the U.S. side of the "duck factory" becomes more apparent with each passing breeding season.

For the third year in a row, more pintails settled in the eastern Dakotas (1.5 million) than in prairie Saskatchewan (1.1 million). Pintail numbers in the eastern Dakotas were a whopping 209 percent higher than average.

Blue-winged teal numbers were knock-your-socks-off good. The 8.9 million blue-wings were the most ever, and 61 percent of those ducks set up housekeeping on the U.S. side of the region--179 percent more than

the norm.

Redheads have also taken advantage of nesting conditions in the U.S. The 1.4 million breeders recorded this year set yet another record, and 654,000 of them--241 percent more than average--settled in the U.S.

Northern shovellers also set a record at 4.6 million, 98 percent higher than the long-term average. Shoveler numbers actually dropped across the eastern Dakotas, but rose dramatically in the prairie provinces and the western Dakotas.

The mallard breeding population rose less than some observers expected to a very respectable 9.2 million, with

3.4 million of those in the U.S. Surveyors counted 18 percent more canvasbacks than a year ago, gadwalls were the third highest ever and scaup climbed to the highest level since 1999, which is still 15 percent below average.

Species of concern are the American wigeon, which fell 14 percent from last year to 2.1 million and is now 20 percent below average, and green-winged teal, off 17 percent to 2.9 million, but still 47 percent higher than average. "High duck numbers bode well for good production and a strong fall flight," Devney says.

Insect pests increase with hot weather

Growers should be actively scouting fields for insect pests. Hot weather is conducive for many insect pests to increase in numbers.

Grasshoppers have increased with hot weather. Watch fields for feeding, especially along field margins and moving into row crops.

Green stinkbugs have been found in soybean fields. The economic threshold is one stinkbug per foot of row. This insect will damage pods forming and cause seed to abort later season.

Spider mites have been found in Holt County. Hot, dry conditions allow this pest to impact soybeans. Watch for small circular areas developing and expanding. Mites are difficult to see and often require a hand lens or shake bean plants on white paper and look for movement.

Also watch late planted soybeans for soybean podworm. This insect will feed

on the seeds of developing pods. The green clover worm carries an organism that helps control this insect. It is important that green clover worm be present in soybean fields and allows this organism to attack soybean podworm. It is also important to realize that the application of fungicides may also control this organism that attacks podworm. One action can have a reaction. Watch fields carefully.

The hot, dry conditions will slow the development of Sudden Death Syndrome (SDS) on soybeans. This is good news. SDS should still show but less than in wet conditions.

Gray leaf spot is slowed by hot weather. Watch fields carefully.

For more information, contact Wayne Flanary at 660-446-3724 or Heather Benedict at 660-525-6434, Regional Agronomists, University of Missouri Extension.

BACK TO SCHOOL SPECIAL

FOR A LIMITED TIME | EXPIRES AUGUST 31

DOUBLE N-B-TWEEN TEXTS
WAS ~~400~~ NOW 800 TEXTS

\$5.95
N-B-TWEEN
YOUTH PLAN
150 MINUTES
800 TEXTS



Certain terms and conditions apply. Primary account required to sign up for this plan. Age limitation applies.

**NORTHWEST
MISSOURI
CELLULAR**

LEADING THE AREA IN COVERAGE, CUSTOMER SERVICE, COST & COMMUNITY INVOLVEMENT

1218 S Main Maryville | (660) 582-3334 | 1-800-331-6341 |
www.nwmc.com | www.facebook.com/nwmc
8-6 Monday-Thursday | 8-5 Friday | 9-2 Saturday

AGENT LOCATIONS

ALBANY: One 36 Realty & Owens and Sons | BURLINGTON JUNCTION: IAMO Telephone | GRANT CITY: Rural Missouri Insurance
MOUND CITY: Laukemper Motors & Midwest Data Center | OREGON: Oregon Farmers Mutual Telephone
ROCK PORT: Rock Port Telephone | STANBERRY: McCarty Farm Loan & Big 4 Hardware | TARKIO: Midwest Data Center





Attend Emergency Medical Services conference

The Nebraska Statewide Emergency Medical Services (EMS) Conference was held from July 8-10 at the Younes Conference Center in Kearney, NE. Jason Acton and David Oswald of Mound City, MO, and Jeff Rathbun of Oregon, MO, attended the three-day conference, along with 370 individuals from Nebraska, Iowa, Colorado, Kansas and Missouri.

The event was sponsored by Central Community College-Grand Island, NE, and the Nebraska Health and Human Services EMS Program. Sessions focused on burn emergencies, cardiac arrest resuscitation, chest trauma, continuous positive airway pressure, crime scene management, eating disorders, kinematics of trauma, organ donation, pediatric trauma, pre-hospital intubation, psychosis and schizophrenia, scene safety, stress management, suicide bombers and other topics.

Get away to the Sidney, Iowa, Rodeo

The 88th annual Sidney, Iowa, Rodeo will be held each evening at 8:00 p.m. from Tuesday, August 2, through Saturday, August 6, on Highway 2 in Sidney, IA. The annual event not only has an interesting history, but continues to provide interesting shows, exhibits and events for all ages. Sidney's population of 1,150 hosts over 38,000 visitors during the four days of the Sidney Rodeo, which ranks in the top 12% of the nearly 800 rodeos approved by the Professional Rodeo Cowboys' Association (PRCA).

In 1923, during the annual Old Threshers & GAR Reunion being held in Sidney, Henry and Earl Tackett offered to furnish 'a real rodeo' for some entertainment. Model T cars, buggies and fencing formed a temporary arena and the Tackett brothers rounded up the wildest horses in the area, presented a grand show, and were paid \$50 each for their bumps and bruises.

Veterans returning home after World War I had organized the Williams-Jobe-Gibson American Legion Post #128. Legion members who were interested in promoting the community made the decision to become producers of the Sidney Championship Rodeo in 1924. The legion built a small grandstand, went to South Dakota to bring back bucking horses at \$3.50 a head, and then went to Texas for wild bulls. They also purchased a few quarter horses which were kept year 'round on the legion's small farm.

Attendance grew rapidly by the late 1920's, the grandstand was enlarged and spectators were charged a small admission. For many years the grand entry included the presence of Native American tribesmen in full tribal dress, usually from the Rosebud Reservation in South Dakota.

In 1931, the addition of electric power at the arena made night performances possible. Since 1952, the livestock has been supplied by stock contrac-

tors. A small carnival and midway were added, publicity was increased and rodeo spectators came from far away to attend, staying in the homes of Sidney residents, as did the cowboy contestants. Churches and food stands provided home cooked meals and a carnival and flea market were added. During the 50's and 60's, nationally known TV stars and singers were special attractions during rodeo performances.

For many years, the Sidney Rodeo has been a PRCA Rodeo. It is held in one of the finest facilities in the nation, with new pens, ample parking, a covered grandstand, concessions, flea market, tram service and more. The contestants, stock, clowns and specialty acts are among the nation's best. Young children delight in Stick Horse Riding, a Clown Contest and Mutton Bustin'. Arena dances follow the Friday and Saturday night shows. Friday evening, music will be provided by the popular Nathan Wade and The Un4Given and on Saturday, dancers will enjoy the sounds of Secret Weapon.

Again this year, each evening of the 2011 Sidney Rodeo will have a spectacular performance by the Two County Dusters, a local youth equestrian drill team.

This year, the Sidney Rodeo begins with a parade around the Fremont County Courthouse square in Sidney, to be held Tuesday, August 2, at 4:00 p.m. and a Rodeo Queen Contest prior to the first performance on Tuesday, August 2, at 6:00 p.m. at the arena in west Sidney.

Residents of Sidney and the surrounding area take pride in this annual event and many volunteers assist with all facets of the production of the rodeo each year. Locally, Laukemper Motors helps sponsor the popular event.

Ticket prices range from \$12 to \$23. For tickets or other information call 712-374-2695, or contact www.sidneyrodeo.us

> Sidney Iowa Rodeo <
Aug. 2, 3, 4, 5, 6 – 8 p.m.

Gizmo McCracken clown/bullfighter
Two County Dusters Drill Team – Mutton Bustin'
Queen Contest – Dodge Ram Series
Special motorcycle act by
Pro Tour FMX Freestyle Motocross
ARENA DANCES Fri. & Sat.

TICKETS \$12 TO \$23
Ph 712-374-2695

or order at www.sidneyrodeo.us
- Owned by Sidney American Legion Post #128

EARLY NOTICE

NODAWAY COUNTY FARMLAND AUCTION

THURSDAY, OCTOBER 20, AT 10:00 A.M.

AMERICAN LEGION HALL, BURLINGTON JCT., MO

260 Acres m/l near Braddyville, IA - Clearmont, MO



Auction Managed & Conducted By:
AUCTIONEER: Greg Clement, 660-442-5436, cell 816-387-3652
Clerks: Greg Clement Auctions LLC
www.clementauction.com • e-mail: gclement@nwmoo.net

"The Voice Everybody Knows"



Local farmers' market

Charlie Clodfelter of Mound City, right- Sells fresh produce to Matt Messbarger, left, on Friday afternoon, July 22, near the Mound City Nutrition Site. Local residents have stands set up each Friday to sell home grown fruits and vegetables.

Mound City Library receives 82 new books through BOOKS FOR CHILDREN program

The Mound City Public Library recently received a shipment of 82 new titles to add to the library's growing collection of excellent children's literature.

The books were given to the Mound City Public Library through The Libri Foundation's BOOKS FOR CHILDREN program grant. The Libri Foundation is a nationwide nonprofit organization that donates new, quality children's books to small, rural public libraries in the United States through its BOOKS FOR CHILDREN program. The grant was written by Mound City's librarian, Cindy Grant, with The Friends of the Library generously matching funds for the grant.

The retail value of the 82 books totals \$1,411.31. The

library also received a bonus donation from Hal Berenson and Laura Ackerman, who gave generously to The Libri Foundation. Approximately \$350 worth of math and science books will add to the current literature at the Mound City Library and help fill information gaps by providing a more rounded knowledge base.

"The Libri Foundation generously provides high quality children's literature in quantities that the library couldn't afford to purchase at one time without a grant," stated Mound City Librarian Cindy Grant. "With the library receiving all these new books in July, it greatly benefited the kids' selections when we have so many more kids utilizing the library in the summer."

Great Northwest Wholesale Water Commission releases new regional water studies

The Great Northwest Wholesale Water Commission is one step closer to providing water to northwest Missouri's cities and water districts, thanks to the completion of a pair of new water studies. The studies were released at the commission's second anniversary celebration, held Thursday, July 14, 2011, at the Clabey Center in Savannah, MO. Consisting of an updated feasibility study for a 12-county water transmission network and a preliminary engineering report for the first construction phase of the project, the two studies are an important planning step prior to beginning any type of construction.

The studies, which were completed by the engineering firms of Bartlett and West and CDM, were underwritten by the Missouri Department of Natural Resources (DNR) and the U.S. Army Corps of Engineers. Derek Brown, City Administrator for Albany, MO, and current chairperson of the commission, noted the significance of the funding. "The DNR and Corps of Engineers have been tremendous partners in the planning stages of the Great Northwest Wholesale Water Commission. This funding has helped us complete the preliminary engineering for our first set of transmission lines, and really set the stage for the commission to begin developing a financing strategy," said Brown.

Last year, the commission selected its first construction project, which formed the basis for the two studies. In June 2010, the commission voted to approve a transmission line that would run between the cities of Savannah and Stanberry, passing through 10 municipalities or public water supply districts, with an option to extend lines to Daviess County to the east. Brown noted, "The commission chose this first route for a number of reasons. Not only is it right in the heart of the 12-county region, but it interconnects many of our member cities and water

districts, which is our ultimate goal."

Even with the completion of these two studies, there is still a long way to go before any water starts flowing. Tye Parsons, director of the Northwest Missouri Regional Council of Governments, commented on the next steps. "The commission, in partnership with the Missouri Department of Natural Resources and U.S. Army Corps of Engineers, has laid the groundwork for the first construction phase of this very important project. However, the next step - funding the actual construction - will be the biggest challenge to date, but I am confident that the members of the Great Northwest Wholesale Water Commission are up to that challenge," remarked Parsons.

The commission was formed in July, 2009, to meet the current and future drinking water needs of a 12-county region in northwest Missouri. The utility will provide an additional wholesale water source to public water supply districts and municipal water systems in the following northwest Missouri counties: Andrew, Atchison, Buchanan, Caldwell, Clinton, Daviess, DeKalb, Gentry, Harrison, Holt, Nodaway, and Worth. Copies of both reports can be downloaded at <http://www.GNWWC.org>.

This Week's History

From the Mound City News archives

50 Years Ago - 1961

- Holt County voters went to the polls with divided opinions about building the one million dollar hospital in Holt County. A two-thirds vote was needed to carry the issue, and only a 50% voter turnout was recorded. The county was widely varied in the voting: the northern portion was 898-476 in favor, but the southern portion was 164-608 opposed.

- Eleven members of the Mound City FFA Chapter and their advisor, Donald Ledbetter, attended the State FFA Leadership Training Camp on the Lake of the Ozarks this week. Members included: Dick Elder, Bud Buckles, Billy Gilland, Tom Andler, Jay Andler, John Trimmer, Wesley Lent, Raymond Mendenhall, Richard Meyer, Donnie Heck and Dean Wilkinson.

- Judith Marie Holmes, 9 1/2 year-old daughter of Mr. and Mrs. Harold Holmes of Graham, MO, won a wrist watch as an award on the Hereford steer she purchased at the Gooch Red Circle Auction near Brookville, KS, for a livestock project.

- Vehicle license costs were: \$1 for motor scooters and motorcycles; \$2 for cars and trucks with less than 24 h.p.; \$3 for cars and trucks with 24 to 48 h.p.; and \$4 for cars and trucks with over 48 h.p.

25 Years Ago - 1986

- One of Mound City's oldest businesses, operated by one family for nearly 100 years, closed its doors. Wilson's Men's Shop at Sixth and State streets was operated for many years by John R. "Jugger" Wilson, who followed in the footsteps of his father, Dave Wilson. After Dave came in 1890, he started and ran the business from several different locations until purchasing the final one at Sixth and State where it stayed for nearly 50 years (the building was McRoberts Drug Store prior).

- Patient Andy Voltmer was featured on the front page with all the 'docs' in town to include Drs. Bill Gondring, an orthopedic surgeon, and Jay McMillen, specialist in internal medicine and rheumatology of St. Joseph, MO, as part of a specialty clinic held at Northwest Health Services in Mound City. Drs. J. Bruce McRae and James Humphrey watched the process.

- Mrs. Evelyn Smith assumed the duties of the local answering service, replacing Mrs. Orpha Schoonover who passed away. The 24-hour per day, 7 days a week job served the police department, both rural and city fire departments, the Northwest Health Services Clinic and took emergency veterinary calls.

- The 16th Annual Squaw Creek Livestock Show was held at the pavilion in Mound City. The event drew youth from four states, with a total of 85 swine, 43 sheep, 4 horses, 10 dairy cows and 45 beef cows being shown.

10 Years Ago - 2001

- MoDOT paved 22.2 miles of Route N from Hwy. 59 in Mound City to Highway 136 east of Tarkio, MO, at a cost of \$610,330.

- Hot weather cut down on the crowds at three events held at the Mound City arena over the week-end. An Oremo 4-H Horse Show was held with 13 participants on Friday; the Holt County Hookers and the Mound City Kiwanis teamed up to offer a garden tractor pull on Saturday; and the 4-H held a Horse Show on the grounds on Sunday.

- Bryan Allen and Lindsey Scheib of South Holt High School were among 138 participants in the 9th and 10th Grade Missouri Youth Honor Choir.

- Eight meetings were planned in area towns for a planning group on county development goals.

- A new 1,750 sq. ft. room was being created at the basement level of the Mound City School to be used for special education services.

FLOOD OF 2011



Floodwaters several feet deep still cover Big Lake, MO, and all the area to the west- The same as it has been for the last six weeks. Big Lake's water tower stands to the left of the picture, and the leveed farm of Tom Tubbs that is completely surrounded, is in the forefront of the picture. Farmground in the foreground has some remaining floodwater standing on the east side of the Little Tarkio River levee. The majority of the crop on this land has been damaged and is dying due to the floodwater.



"You know if you see a tugboat in your field----- You've got PROBLEMS!!" This tugboat was pushing part of a section barge to the worksite of the Burlington Northern Santa Fe railroad west of Fortescue, MO. The section barge will be used for the work being done by Massman Construction to construct a 200' trestle railroad bridge at the site.



One of the six railroad bridges- Being constructed along the approximately 3.5 miles of railroad track between the Missouri River at Rulo, NE, and the town of Fortescue, MO, appears to be nearing completion. The new bridge appears to be at the current track height, and a slough has already been dug beneath the bridge to allow for draining of floodwater from the north side of the tracks to the south side and theoretically back to the Mighty MO.

Operation "Mighty MO"

Missouri River Flood Fight 2011

The U. S. Army Corps of Engineers recently distributed a release titled, "Operation 'Mighty MO'", Missouri River Flood Fight 2011, a beautifully colored 9-page set of tables and graphs that depict the Missouri River Reservoir System, the total storage capacity chart, graph of annual runoffs from 1898 to 2011, the total percentage of flood control storage per reservoir, and runoffs recorded through June, as well as predicted runoffs for 2011.

From the looks of things in this area and everywhere to the north, however, the packet should have been titled, "Oops! GO, Mighty MO, GO". The amounts of water that 'had' to be released from the Missouri Reservoir System late this spring, because of unprecedented (and obviously not predictable) snowfall accumulations and rainfalls, have left hundreds of thousands of acres of farmground, thousands of homes, nuclear plants, businesses and interstate highways under water.

Using the Corps letter, maps and graphs, an attempt to relay the statistics on the management and levels at the reservoir follows:

The Missouri Reservoir System contains six dams, starting from the north-Fort Peck, Garrison, Oahe, Big Bend, Fort Randall and Gavins Point.

Of the total reservoir system (all six reservoirs), the allocation of the total storage capacity is: 25% or 17.9 Million Acre Feet (MAF) in part of the permanent pool; 53% or 38.9 MAF is used for carryover multiple use; 16% or 11.6 MAF is designated for annual flood control and

multiple use; and 6% or 4.7 MAF is designated for exclusive flood control.

Runoff into the Missouri River Basin above Sioux City, IA, during the month of June, was the highest single runoff month since the Corps began keeping detailed records in 1898. May was the third highest single month at 10.5 MAF. Runoff above Sioux City for June was 13.8 MAF, which is enough water to fill the Memorial Stadium in Lincoln, NE, more than 9,700 times, or once every five minutes during the entire month.

The annual runoff chart for the basin shows the forecast for annual runoff in 2011 at nearly 60 MAF. (Normal runoff for January to June is 16.2 MAF, but totals are already at 42.3 MAF). Comparing that to other flood years, in 2010 the annual runoff was less than 40 MAF, in 2009 it was 34 MAF, 2007 was 20 MAF and 1993 was 36 MAF.

Runoff totals for each of the six reservoirs is anywhere from 117% to 339% above the normal for the first six months of the year. To date, the Corps reports that more than 90 percent of mountain snowpack has melted and run off into the system. Releases are projected to remain at current all time high levels, with a small drop in August depending on rainfall amounts.

Those projections would imply that the thousands of acres throughout the Midwest that are still under several feet of water won't see any relief for awhile. Predictions indicate that work may just be getting underway before the snow flies.



The town of Craig, MO, is still surrounded by floodwaters- On nearly every side. A concerted effort by farmers, county workers and volunteers to surround the town with levees appears to have saved the town from the wrath of the Missouri River. Residents and businesses alike have begun moving back into town, as the mandatory evacuation order was lifted last week. Citizens Bank and Trust of Craig and the Craig Post Office, which both relocated to Mound City, are undecided on return dates.

Gov. Nixon requests major disaster declaration for state of Missouri

Gov. Jay Nixon recently requested a major disaster declaration for the state of Missouri from President Barack Obama, as a result of historic Missouri River flooding and severe weather that have affected the state since June 1.

"As we all know, destructive and deadly weather has repeatedly hit Missouri with devastating consequences in 2011, and the latest round of flooding and severe weather has damaged and destroyed homes, impacted businesses and saddled Missouri families with major expenses," said Gov. Nixon. "I am requesting that the President issue a major disaster declaration to provide assistance to Missouri families and public agencies as they deal with the tremendous cost of responding to flooding and storm damage and work to rebuild communities and recover."

Gov. Nixon's request includes the following counties: Adair, Andrew, Atchison, Buchanan, Carroll, Chariton,

Clark, Holt, Howard, Knox, Lafayette, Lewis, Linn, Macon, Marion, Monroe, Platte, Ralls, Ray, St. Charles, Saline, Shelby and Sullivan.

Gov. Nixon first declared a state of emergency in Missouri effective Friday, April 22, due to high winds, tornadoes and severe flooding that had affected the state since April 19. The initial order activated the State Emergency Operations Center and enabled the state to mobilize its resources - including the State Emergency Management Agency (SEMA), the Missouri National Guard and Missouri State Highway Patrol - to assist local authorities. Because of the continuing need for state resources to assist Missouri communities, the Governor extended the emergency declaration until Sept. 15. Members of the National Guard continue to provide assistance with Missouri River flooding and coordinate debris removal and recovery efforts in Joplin, following the May 22 tornado there.

LEGAL NOTICES

NOTICE OF PUBLIC HEARING 2011 PROPERTY TAX RATES

A public hearing will be held at 5:30 p.m., Thursday, August 11, 2011, at the Mound City City Hall at which time citizens may be heard on the property tax rates proposed to be set by the City of Mound City. The tax rates shall be set to produce the revenues which the budget for the fiscal year beginning July 1, 2011, shows to be required from the property tax. Each tax rate is determined by dividing the amount of revenue required by the current assessed valuation. The result is multiplied by 100 so the tax rate will be expressed in cents per \$100 valuation.

Assessed Valuation (by categories)	Current Tax Year 2011	Prior Tax Year 2010
Real Estate		
Residential	\$5,040,029	\$5,002,122
Agricultural	\$ 13,617	\$ 11,380
Commercial	\$2,860,411	\$2,869,573
Railroad & Utilities-State Assessed	\$ 343,701 est	\$ 343,701
Railroad & Utilities-Locally Assessed	\$ 90,891	\$ 128,861
Total Real Estate	\$8,348,649	\$8,355,637
Personal Property		
Personal Property	\$2,892,854	\$2,450,100
Railroad & Utilities-State Assessed	\$ 74,707 est	\$ 74,707
Railroad & Utilities-Locally Assessed	\$135,142	\$ 97,804
Total Personal	\$3,102,703	\$2,622,611
Total Assessed Valuation	\$11,451,352	\$10,978,248
Increase in Valuation due to New Construction/Improvements	\$545,924	\$383,434
Increase in Tax Revenue due to New Construction/Improvements	\$9,649 (5.01%)	\$7120 (4.81%)
Funda	Property Tax Revenues Budgeted for 2011	Proposed Tax Rates for 2011 (Per \$100)
General	\$ 81,950	\$.7370
Street Light	\$ 22,300	\$.2013
Park	\$ 29,400	\$.2632
Library	\$ 45,700	\$.4080
Health	\$ 17,550	\$.1579
Totals	\$ 196,900	\$ 1.7674

Based on best available information at this time and may be adjusted prior to September 1, 2011.

Mayor & Board of Aldermen, City of Mound City
Patsy Smith, CMC/MRCC, City Clerk

TRUSTEE'S SALE

IN RE: David S. Young and Heather L. Young, Husband and Wife Trustee's Sale:

For default in payment of debt and performance of obligation secured by Deed of Trust executed by David S. Young and Heather L. Young, Husband and Wife, dated August 9, 2007, and recorded in the Office of the Recorder of Deeds of Holt County, Missouri, in Book 380, Page 220, the undersigned Successor Trustee, at the request of the legal holder of said Note will, on Friday, August 12, 2011, between the hours of 9:00 a.m. and 5:00 p.m. (at the specific time of 12:25 p.m.), at the North Front Door of the Court House, City of Oregon, County of Holt, State of Missouri, sell at public venue to the highest bidder for cash the following described real estate, described in said Deed of Trust, and situated in Holt County, State of Missouri, to wit:

COMMENCING AT THE NORTHEAST CORNER OF THE WEST HALF OF LOT 6, BLOCK 48 IN THE ORIGINAL TOWN, NOW CITY, OF OREGON, THENCE WEST ON THE NORTH LINE OF SAID LOT 6, 75 FEET TO THE EAST LINE OF JEFFERSON STREET, IN SAID CITY, WHICH IS ALSO THE NORTHWEST CORNER OF SAID LOT 6, THENCE SOUTH ON THE WEST LINE OF SAID LOT 6 TO A POINT THEREON WHICH IS 34 FEET SOUTH OF SAID NORTHWEST CORNER OF SAID LOT 6, THENCE IN A SOUTHEASTERLY DIRECTION TO A POINT WHICH IS 21 FEET EAST OF THE WESTERLY LINE OF SAID LOT 6; THENCE EAST 54 FEET TO THE EAST LINE OF THE WEST HALF OF SAID LOT 6; THENCE NORTH ON SAID LINE 61 FEET TO THE NORTHEAST CORNER OF THE WEST HALF OF SAID LOT 6 TO THE COMMENCING CORNER, HOLT COUNTY, MISSOURI,

to satisfy said debt and cost.

MILLSAP & SINGER, P.C., Successor Trustee
612 Spirit Drive, St. Louis, MO 63005, (636) 537-0110
File No: 86892.081211.250265 FC
NOTICE

Pursuant to the Fair Debt Collection Practices Act, 15 U.S.C. §1692c(b), no information concerning the collection of this debt may be given without the prior consent of the consumer given directly to the debt collector or the express permission of a court of competent jurisdiction. The debt collector is attempting to collect a debt and any information obtained will be used for that purpose.

PUBLISH ON: July 21, 2011 07/28/2011, 08/04/2011, 08/11/2011 2/4tc

CRAIG COMMUNITY CALENDAR

(ITEMS MUST BE AT THE MOUND CITY NEWS BY NOON MONDAY)

- July 30 - Holt County Party in the Park at Griffith Park in Mound City - 12 noon**
- August 4 - Flood Informational Meeting at Squaw Creek Wildlife Refuge - 1-3:30 p.m.**
- August 13 - Craig City Council Meeting at Craig City Hall - 9 a.m.**
- August 18 - School Starts at Craig R-3**
- August 18 - Craig Community Meeting at Legion Building - 6:30 p.m.**

See Us For All Your Banking Needs

- FREE Checking • FREE Internet Banking
- NOW Accounts • Savings Accounts • CD'S
- LOANS At Competitive Rates for Homes, Cars, Etc.

Citizens Bank & Trust

PO Box 70 PO Box 38
Rock Port, MO 64482 Craig, MO 64437
660-744-5333 660-683-5333

Member FDIC 904 State St.
Mound City, MO 64470 660-442-3800

Holt County real estate transfers

The following real estate transfers were made at the Holt County Courthouse in Oregon, MO:

William Tunnell and Clarrisa J. Tunnell to Thomas L. Williams and Jean G. Williams, Oregon, MO; Part of a tract of land in the Northwest Quarter of Section 26, Township 60 North, Range 38 West, see record for full description.

Edwin E. Staples and Shirley A. Staples to Edwin E. Staples, T.O.D., and Shirley A. Staples, T.O.D., Mound City, MO; The Southwest Quarter of the Southwest Quarter in Section 30, Township 62, Range 38, in Lot 5 in Donan Addition in the city of Mound City.

Janet Denise Luzmoor to Joel Andrew Luzmoor, Mound City, MO; The North Half of Lots 6, 7, and 8 in Block 17 in Mound City Extension Company in the city of Mound City.

Karen Moore Barker to Karen Moore Barker, T.O.D., Mound City, MO; All of Lots 5 and 8 and a part of Lot 4 commencing at the Southeast corner of Lot 4; thence North 4 feet; thence on a straight line to the Southwest corner of Lot 4; thence East to the commencing point, all in Block 21 in the original town of Mound City.

Ruth Ann Dunnihoo and David E. Dunnihoo to Steven S. Ward, St. Joseph, MO; The West Half of Lot 59 in Section 19, Township 61, Range 39, in Ideker Subdivision in the village of Big Lake.

Andrew Sterling Pearson to Robert A. Pearson and Linda A. Pearson, Kansas City, MO; All of Lot 8 and the North Half of Lot 9 in Block 16 in the original town of Mound City.

Lowell A. Ripley and Phyllis Chetakian to Kathy Haer, Mound City, MO; All of Lots 1 and 4 in Block 2 in the original town of Mound City.

Holt County traffic violations

The following traffic violations that occurred in Holt County were paid through the Missouri Judiciary Fine Collection Center:

Dustin R. Allen- Of Fairfax, MO, Pursuing/Taking/Killing/Possessing Or Disposing Of Wildlife Illegally. Case filed on June 21, 2011. Case disposed on July 18, 2011. Fine Amount: \$74.50.

David E. Burr- Of Omaha, NE, Exceeded Posted Speed Limit (Exceeded By 20-25 Mph). Case filed on May 29, 2011. Case disposed on July 18, 2011. Fine Amount: \$155.50.

Marcus Donnez Champion- Of Grandview, MO, Driver/Front Seat Passenger 16 y/o or Over Fail to Wear Properly Adjusted/Fastened Safety Belt. Case filed on June 18, 2011. Case disposed July 18, 2011. Fine Amount: \$10.00.

Lorena Diaz- Of Smyrna, GA, Exceeded Posted Speed Limit (Exceeded By 11-15 Mph). Case filed on June

24, 2011. Case disposed on July 19, 2011. Fine Amount: \$55.50.

Crystal Lynn Johnson- Of Shenandoah, IA, Displayed/Possessed Mtr Veh/ Trl Plates of Another Person. Case filed on June 18, 2011. Case disposed on July 18, 2011. Fine Amount: \$80.50.

Jonathan L. Rosenbohm- Of Fairfax, MO, Pursuing/Taking/Killing/Possessing Or Disposing Of Wildlife Illegally. Case filed on June 21, 2011. Case disposed on July 18, 2011. Fine Amount: \$74.50.

Nathan D. Stark- Of Fairfax, MO, Pursuing/Taking/Killing/Possessing Or Disposing Of Wildlife Illegally. Case filed on June 21, 2011. Case disposed on July 18, 2011. Fine Amount: \$74.50.

Secenea Richetta Thomas- Of Harvest, AL, Exceeded Posted Speed Limit (Exceeded By 11-15 Mph). Case filed on June 28, 2011. Case disposed on July 14, 2011. Fine Amount: \$55.50.

Mound City Elementary School 2011-2012 supply list

The Mound City Elementary School has submitted a list of school supplies for grades preschool through fourth grade, as well as middle school students for the 2011-2012 school year. Third through eighth grade students will be provided with a free assignment notebook.

- PRESCHOOL**
- 1 change of clothes in a bag with child's name
 - 1 small travel pillow with pillow case
 - 1 blanket
 - 1 backpack with child's name
 - 1 pkg. wet wipes
 - 2 - 2-pocket folders (plastic preferred)

Business plan seminar to be held July 28

Have an idea for a business, but don't know what information the bank is going to need to recognize the greatness in the idea? Started a business, but now need to expand and don't know how to update that business plan started 7 or 8 years ago?

The University of Missouri Extension has a simple solution. Business Development Specialist, Tom Kelso, will be teaching a class on how to put a business plan together on Thursday, July 28, at the Holt County Extension Office, 101 E. Missouri, Oregon, MO, from 9 a.m. to 12 noon.

Participants will be shown the basic parts of a business plan and what a lending institution will be looking for in each of those sections. They will be shown how to make a business plan look professional and how to avoid common mistakes when building a plan. Moreover, this seminar explains how a business plan can help in the day-to-day operations of a business. As the name suggests, it is a PLAN for a business.

Space is limited. Call the Holt County Extension Office at 660-446-3724 to register.

- 1 pair gym shoes
- 1 box of tissues (for art)
- KINDERGARTEN**
- 4 boxes of primary crayons (8 only)
- 1 Prang or Crayola watercolors
- 8 pencils
- 2 small erasers
- 1 pair blunt-ended Fiskars scissors (labeled)
- 1 bottle of Elmer's glue (no paste or colored glue)
- 2 glue sticks
- 1 pkg. of facial tissues
- 1 paint shirt (labeled)
- 1 pkg. of black EXPO dry erase markers (no Crayola)
- 1 white board eraser
- 1 pair of gym shoes (a washed pair of old tennis shoes is fine- new not necessary)
- 1 backpack or school bag
- 1 (Boys)- Ziploc sandwich bags
- 1 (Girls)- Ziploc gallon bags
- 1 (Girls)- box of wet wipes
- 1 box Clorox wipes
- 1 pkg. large paper plates
- 4 folders (labeled)
- 1 box of tissues for art

- FIRST GRADE**
- 12 No. 2 pencils
 - 2 erasers
 - 24 crayons
 - 1 pkg. black Expo dry erase markers (no Crayola)
 - 1 dry eraser or an old sock
 - 2 writing tablets
 - 1 school box
 - 1 Fiskars scissors
 - 2 Elmer's white glue
 - 1 pair of gym shoes (non-marking soles)
 - 1 paint shirt
 - 1 watercolor paints
 - 1 box colored pencils
 - 3 boxes quart Ziploc bags
 - 3 boxes Kleenex
 - 2 containers Clorox wipes
 - 3 two-pocket folders
 - 4 pkg. 3x5 lined index cards (100)
 - 1 empty/clean Pringles can with lid
 - 1 3-ring binder, 1-1/2", with see-through cover and pockets on the inside front and back covers
 - 1 3-hole punched zippered pencil pouch
 - 1 box of tissues (for art)

- Please put child's name on all supplies.

- SECOND GRADE**
- 1 box of 24 crayons
 - 3 boxes of facial tissue
 - 3 double pocket folders
 - 3 glue sticks
 - 1 12" ruler
 - 2 pkg. notebook paper
 - 5 No. 2 pencils
 - 2 red ink pens
 - 2 erasers
 - 1 Fiskars scissors
 - 1 clipboard
 - 1 pkg. black Expo dry erase markers
 - 4 pkg. 3x5 unruled index cards (100)
 - 1 box quart Ziploc bags (boys only)
 - 1 box gallon Ziploc bags (girls only)
 - 1 white board eraser or old sock
 - 1 backpack
 - 1 pkg. colored pencils
 - 1 watercolor paints- Prang or Crayola
 - 1 pair gym shoes (non-marking soles)
 - 1 paint shirt (an old shirt that covers clothes)
 - 1 zipper pouch for supplies in desk
 - Bring P.A.N.T.H.E.R. Book from 1st grade or a new binder if necessary (replace all items)
 - 1 box of tissues (for art)
 - Please put child's name on all supplies

- THIRD GRADE**
- 1 pair of gym shoes
 - 1 watercolor paints
 - 2 boxes of Kleenex
 - 3 folders with both pockets
 - 1 pack No. 2 pencils (no mechanical)
 - 1 big pink eraser
 - 4 dry erase markers
 - 1 dry erase eraser
 - 1 clipboard
 - 1 pair Fiskars scissors
 - 1 glue stick
 - 1 box colored pencils
 - 1 box of Crayons
 - 2 pkg. of lined index cards
 - 1 supply box
 - 1 pkg. of Clorox wipes
 - 2 red pens
 - 1 paint shirt
 - 2 pkg. of wide ruled, loose paper
 - 2 (1 subject) spiral notebooks- different colors
 - 1 3-ring binder, 1 1/2", with see-through cover and pockets on the inside front and back covers
 - 1 3-hole punched zippered pencil pouch
 - 1 box of tissues (for art)
 - Please put child's name on all supplies.

- ets on the inside front and back covers
- 1 3-hole punched zippered pencil pouch
- 1 pkg. Post-It notes
- 1 box of tissues (for art)
- Please put child's name on all supplies.

- FOURTH GRADE**
- 1 box of 24 crayons
 - 1 box of colored pencils
 - 1 pkg. of 24 No. 2 pencils
 - 4 dry erase markers and eraser
 - 1 scissors
 - 2 glue sticks
 - 1 ruler with cm. and in.
 - 1 watercolor paints- Prang or Crayola
 - 1 supply box (must fit in desk)
 - 3 1-subject spiral notebooks
 - 2 folders with pockets
 - 2 boxes of Kleenex
 - 1 paint shirt
 - 1 pair of gym shoes
 - 1 pkg Clorox or wet wipes
 - 2 pkgs wide ruled loose paper
 - 1 3-ring binder, 1 1/2", with see-through cover and pockets on the inside front and back covers
 - 1 3-hole punched zippered pencil pouch that fits in binder
 - Peel and stick index tabs
 - 1 box of tissues (for art)
 - Please put child's name on all supplies.

MIDDLE SCHOOL Grades 5-8

- 1 1" 3-ring binder
- 1 2" 3-ring binder
- 1 pkg. loose leaf paper
- 1 5-subject notebook
- Pencils
- Pens
- 4 dry erase markers
- 3 red pens
- 2 boxes of colored pencils
- 4 pkg. lined white note cards
- 2 boxes of facial tissues
- 1 pkg. multicolored highlighters
- 1 5-Star notebook (or one with multiple sections)
- 1 pocket folder
- 1 jump drive
- 1 glue stick

- Grades 5-6**
Gym shoes
Grades 7-8
Gym shoes and gym clothes
Grades 6, 7 and 8
TI-34II calculator

Notice of Tax Certificate Sale

The following is a publication of land in Holt County, Missouri, upon which a tax certificate is to be offered for sale at the Courthouse door, on Monday, August 22, 2011, at ten o'clock in the morning (10:00 a.m.), according to the provisions of Chapter 140: Revised Statutes of the State of Missouri 2008.

The land to be sold under the description as listed and the amount as shown due represents the total amount of taxes, interest, and costs, including the cost of the sale; and the certificate will be issued covering as much land as is necessary to discharge the total taxes, interest, and the charges as are due at the time of the sale.

The land to be offered is as follows:

Antholz, Darrell L.: Parcel No. 14-7-36-01-1-28.000, Lot 44, Ramsey's Second Addition, Big Lake - 2008, \$183.23; 2009, \$147.08; 2010, \$132.52.
Total including advertising cost: \$482.38

Bauer, Lawrence L.: Parcel No. 07-1-11-04-02-04.000, S 1/2 Lot 2 & all Lot 3, Blk. 1, Ensworth Addition, Craig - 2008, \$33.89; 2009, \$29.98; 2010, \$26.15.
Total including advertising cost: \$109.57

Burton, Bryce W.: Parcel No. 17-9-32-01-06-08.000, Lots 14,15,16, Blk. 38, Forest City O.T. - 2008, \$214.02; 2009, \$193.18; 2010, \$42.56.
Total including advertising cost: \$469.31

Cecil, Rhonda Sue: Parcel No. 17-7-26-03-17-06.000, E 1/2 Lots 5 & 8, Blk. 49, Oregon O.T. - 2008, \$377.93; 2009, \$334.61; 2010, \$287.21.
Total including advertising cost: \$1,019.30

22-25, Blk. 8, Barnard's Addition, Maitland - 2008, \$282.97; 2009, \$234.50; 2010, \$212.03.
Total including advertising cost: \$749.05

Kephart, Sarah, Attn. Rodney Bissell: Parcel No. 04-4-19-04-04-01.000, Lots 7 & 8, Blk. 2, Martin's Addition, Corning - 2008, \$273.93; 2009, \$230.85; 2010, \$204.60.
Total including advertising cost: \$728.93

Kinney, William R., Lou, & Wylie B., Attn. James L. Kinney: Parcel No. 12-3-06-02-01-03.000, E 60' Lots 2 & 3, Blk. 6, Mound City O.T. - 2008, \$297.46; 2009, \$260.44; 2010, \$223.83.
Total including advertising cost: \$801.28

Nowling, David Duane & Mary Ellen: Parcel No. 07-1-02-00-00-10.000, 20.2 A. tract begins @ NE cor. SE 1/4 in 2-62-40 - 2008, \$377.43; 2009, \$329.56; 2010, \$292.60.
Total including advertising cost: \$1,019.14

Nowling, David Duane & Mary Ellen: Parcel No. 12-3-06-02-09-02.000, Lot 2 & N 13' Lot 3, Blk. 4, Mound City O.T. - 2008, \$821.82; 2009, \$677.34; 2010, \$582.96.
Total including advertising cost: \$2,101.67

Offenbacher, Barbara, Attn. Roxanne Dunn: Parcel No. 07-1-11-04-02-07.000, Lot 7, Blk. 1, Ensworth Addition, Craig - 2008, \$213.60; 2009, \$193.93; 2010, \$170.26.
Total including advertising cost: \$597.34

Parker, John M.: Parcel No. 20-6-24-00-00-07.000, 6.7 A. in W 1/2, SW 1/4, SE 1/4 in 24-59-38, lying N of RR R/W, Exc. Co. Rd. R/W. 2008, \$387.20; 2009, \$131.94; 2010, \$114.38.
Total including advertising cost: \$653.07

Ray, Courtney & White, Jason: Parcel No. 09-9-31-03-30-11.000, W 100' of S 25', Lot 7, Blk. 7, Mound City O.T. - 2007, \$702.57; 2008, \$591.30; 2009, \$485.58; 2010, \$417.87.
Total including advertising cost: \$2,216.87

Ripley, Robert E.: Parcel No. 17-8-34-01-02-11.000, Lots 9-11, Elliott's Addition, Oregon - 2008, \$1,402.24; 2009, \$1,276.32; 2010, \$1,096.04.
Total including advertising cost: \$3,794.15

Rogers, James Ray: Parcel No. 07-1-11-04-04-15.000, Lots 13 & 14, Blk. 3, Ward Addition, Craig - 2008, \$347.60; 2009, \$306.36; 2010, \$269.09.
Total including advertising cost: \$942.60

Seals, James & Oralia: Parcel No. 13-9-30-01-02-01.001, Tract in Lot 53, I.F. Dopps Sub., Big Lake & N of & adj. to Lot 53, also tract in equal width ly-

ing W of & adj. to the above described tract to the water edge & except tract deeded in Book 360, Page 96 - 2007, \$777.95; 2008, \$653.79; 2009, \$591.14, 2010, \$531.57.
Total including advertising cost: \$2,574

Selleck, Michael Sr.: Parcel No. 13-9-32-04-02-05.000, Lots 13-20, Blk. 1, Fortescue O.T. - 2008, \$694.02; 2009, \$607.36; 2010, \$540.66.
Total including advertising cost: \$1,861.59

Sipes, Lannie L. & Mary E.: Parcel No. 17-9-29-03-01-05.000, Lots 2 & 3, Blk. 3, Forest City O.T. - 2008, \$224.03; 2009, \$188.67; 2010, \$158.68.
Total including advertising cost: \$590.93

Skidmore, John & Carrie: Parcel No. 09-9-31-04-17-03.000, Lots 6 & 7, Blk. 40, Mound City O.T. - 2006, \$138.07; 2007, \$121.12; 2008, \$89.82; 2009, \$73.00; 2010, \$62.61.
Total including advertising cost: \$504.17

Stoner, Mark A.: Parcel No. 13-4-18-00-00-02.001, E 31.5' Lots 16 & 17 & all Lots 18-31, Mathews Manor Sub., in 18-61-39. - 2008, \$668.01; 2009, \$250.34; 2010, \$280.73.
Total including advertising cost: \$1,218.63

Stoner, Mark: Parcel No. 09-9-31-04-02-07.000, Lots 7 & 8, Blk. 11, Mound City Ext. Co. Add. - 2008, \$112.67; 2009, \$98.33; 2010, \$84.39.
Total including advertising cost: \$314.94

Thrash, William A. & Kathleen V.: Parcel No. 7-1-11-04-15-03.000, Lots 12 & 13, Blk. 5, Craig O.T. - 2008, \$649.55; 2009, \$586.99; 2010, \$515.77.
Total including advertising cost: \$1,771.86

Twyman, Mary: Parcel No. 07-1-11-04-04-04.000, SW 40' Lots 4 & 5, Blk. 3, Craig O.T. - 2008, \$16.63; 2009, \$14.32; 2010, \$12.37.
Total including advertising cost: \$62.87

Yeager, Jimmy Dale: Parcel No. 10-2-09-00-00-05.000, E 104' Lot 10 & E 104' of S 36' Lot 9, Blk. 9, Elliott Height Addition, Maitland - 2008, \$222.12; 2009, \$187.51; 2010, \$169.49.
Total including advertising cost: \$598.67

I, Donna Cotton, Collector of the County of Holt, State of Missouri, do hereby certify that the foregoing is a true and correct list of the land that will be offered for sale as set forth above.

Donna Cotton, Collector
2/3tc

Community Calendar

brought to you by



Member FDIC

NODAWAY VALLEY BANK

the right bank...

614 State Street • Mound City, MO • 660-442-3131

- July 30 - Holt County Party in the Park at Griffith Park in Mound City - 12 noon
- August 1 - Friends of the Library Meeting at Mound City Public Library - 5 p.m.
- August 2 - Story Time at Mound City Public Library - 10-10:30 a.m.
- August 4 - Flood Informational Meeting at Squaw Creek Wildlife Refuge - 1-3:30 p.m.
- August 9 - Story Time at Mound City Public Library - 10-10:30 a.m.
- August 11 - Mound City City Council at Mound City City Hall - 5:30 p.m.
- August 16 - Story Time at Mound City Public Library - 10-10:30 a.m.
- August 18 - School Starts at Mound City R-2

Every Friday at the Mound City Nutrition Site
Doughnuts, Doughnut Holes, Cinnamon Rolls
8:30 a.m. until Sold Out

A.A. Mound City New Beginnings
Tuesdays and Fridays, 7 p.m.,
Community of Christ Church, 1410 Nebraska St., Mound City

Take Off Pounds Sensibly (TOPS), non-profit,
non-religious weight-loss support group, Mondays, 4:30 p.m.
Concordia Lutheran Church, Mound City

Deadline for Calendar Items is Monday Evening

Lobby Hours: Monday thru Thursday 9 a.m.-4 p.m.; Friday 9:00 a.m.-5:00 p.m.
Drive-in Window: Monday thru Thursday 8 a.m.-5 p.m.; Friday 8 a.m.-6 p.m.; Saturday 8 a.m.-noon

CHECK OUT THESE OTHER CONVENIENT NVB LOCATIONS

MARYVILLE	SAVANNAH	ST. JOSEPH
660.562.3232	816.324.3158	816.364.5678
Third & Main Street 209 N Buchanan (drive-up only)* 1303 S Main*	301 S US Hwy 71*	4001 N Belt Hwy & Cook Road* 402 N Belt Hwy & Faraon Street* 1701 S Belt Hwy* 1302 S Riverside & Mitchell Ave.* 6304 King Hill Avenue*
-Drive-up ATMs	nvb.com	

STATE OF MISSOURI)
COUNTY OF HOLT) ss
LITTLE TARKIO RIVER) Cause No.
DRAINAGE DISTRICT NUMBER ONE) 09HO-CV00050

NOTICE OF HEARING ON DRAINAGE DISTRICT'S REQUEST FOR APPROVAL & CONFIRMATION OF THE AMENDED COMMISSIONERS' REPORT FOR BENEFIT REASSESSMENT FOR LITTLE TARKIO DRAINAGE DISTRICT

To all owners of land and other property in the Little Tarkio Drainage District Number One of Holt County, Missouri:

You, and each of you, are hereby notified that at 1:00 p.m. on Wednesday, August 3rd, 2011, in Division One of the Circuit Court of Holt County, Missouri, at the Holt County Courthouse, Oregon, Missouri, there will be a hearing on the Board of Supervisors' Request for Final Approval of the Amended Commissioners' Report for Benefit Reassessment for Little Tarkio Drainage District Number One.

That the commissioners heretofore appointed to assess benefits to the property and lands situate in said drainage district, filed their Amended Report for Benefit Reassessment for Little Tarkio Drainage District Number One in this office on the 19th day of October, 2010, with publication of said report in its entirety once a week for three consecutive weeks thereafter in the *Mound City News* published in Holt County, Missouri, with the last date of publication being November 4, 2010.

You, and each of you, are hereby notified to appear on Wednesday, August 3, 2011, at 1:00 p.m., in Division One of the Circuit Court of Holt County, Missouri, at the Holt County Courthouse, Oregon, Missouri, and show cause, if any and there be, why the Board of Supervisors' Request for Final Approval of the Amended Commissioners' Report for Benefit Reassessment for Little Tarkio Drainage District Number One should not be approved and confirmed.

(signed) Vickie Book

2/2tc Clerk of the Circuit Court of Holt County, Missouri

STATE OF MISSOURI)
COUNTY OF HOLT) ss
LITTLE TARKIO RIVER) Cause No.
DRAINAGE DISTRICT NUMBER ONE) 09HO-CV00050

NOTICE OF HEARING ON DRAINAGE DISTRICT'S REQUEST TO PAY FEES TO COMMISSIONERS FOR SERVICES IN THE BENEFIT REASSESSMENT FOR LITTLE TARKIO DRAINAGE DISTRICT #1 MEMBERS

To all owners of land and other property in the Little Tarkio Drainage District Number One of Holt County, Missouri:

You, and each of you, are hereby notified that at 1:00 p.m. on Wednesday, August 3rd, 2011, in Division One of the Circuit Court of Holt County, Missouri, at the Holt County Courthouse, Oregon, Missouri, there will be a hearing on the Board of Supervisors' Request to Pay Fees to Commissioners for Services in the Benefit Reassessment for Little Tarkio Drainage District Number One Members.

You, and each of you, are hereby notified to appear on Wednesday, August 3, 2011, at 1:00 p.m., in Division One of the Circuit Court of Holt County, Missouri, at the Holt County Courthouse, Oregon, Missouri, and show cause, if any and there be, why the Board of Supervisors' Request to Pay Fees to Commissioners for Services in the Benefit Reassessment for Little Tarkio Drainage District Number One Members should not be approved.

(signed) Vickie Book

2/2tc Clerk of the Circuit Court of Holt County, Missouri

NOTICE OF TRUSTEE'S SALE

For default in payment of debt and performance of obligations secured by deed of trust executed by Wright Properties LLC, dated June 5, 2001, recorded June 6, 2001, in Book 337, Page 726, in the Office of the Recorder of Deeds for Holt County, Missouri, I, Doug Thomson, Trustee, will, on Tuesday, August 9, 2011, between the hours of 9:00 a.m. and 5:00 p.m., at the north front door of the Holt County Courthouse in Oregon, Missouri, sell at public venue the highest bidder for cash the following real property:

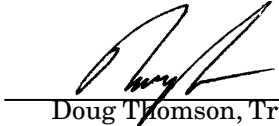
Tract I: All of Lots Two (2), Three (3), Six (6) and Seven (7) in Block Seventeen (17) in the original town, now City of Mound City, Holt County, Missouri.

Tract II: All of Lot Ten (10) in Block Seventeen (17) in the original town, now City of Mound City, Holt County, Missouri;

to satisfy said debt and costs.

Sale starts at 2:00 p.m.

Publication is in the *Mound City News*, July 14, 21, 28, and August 4, 2011.


Doug Thomson, Trustee

THIS IS AN EFFORT TO COLLECT A DEBT AND ALL INFORMATION OBTAINED WILL BE USED FOR SUCH PURPOSE. YOU HAVE THE RIGHT TO RECEIVE, UPON REQUEST, A VERIFICATION OF THIS DEBT. YOU HAVE THE RIGHT TO DISPUTE ALL, OR ANY PART, OF THIS DEBT. IF YOU DO NOT DISPUTE THE DEBT WITHIN THIRTY DAYS AFTER RECEIPT OF THIS LETTER, IT WILL BE PRESUMED TO BE VALID. THE UNDERSIGNED IS ATTEMPTING TO COLLECT THE DEBT AND THE INFORMATION OBTAINED FROM YOU WILL BE USED FOR THAT PURPOSE.

1/4tc

NOTICE OF TRUSTEE'S SALE

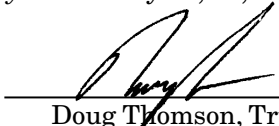
For default in payment of debt and performance of obligations secured by deed of trust executed by Dennis R. Wright and Stephanie R. Wright, husband and wife, dated October 25, 1993, recorded November 1, 1993, in Book 306, Page 759, in the Office of the Recorder of Deeds for Holt County, Missouri, I, Doug Thomson, Trustee, will, on Tuesday, August 9, 2011, between the hours of 9:00 a.m. and 5:00 p.m., at the north front door of the Holt County Courthouse in Oregon, Missouri, sell at public venue to the highest bidder for cash the following real property:

All of Lot Seven (7) and the South One-Half (S^{1/2}) of Lot Six (6), Block One (1), McCoy's Addition, an addition to the original town, now city of Mound City, Missouri,

to satisfy said debt and costs.

Sale starts at 2:00 p.m.

Publication is in the *Mound City News*, July 14, 21, 28, and August 4, 2011.


Doug Thomson, Trustee

THIS IS AN EFFORT TO COLLECT A DEBT AND ALL INFORMATION OBTAINED WILL BE USED FOR SUCH PURPOSE. YOU HAVE THE RIGHT TO RECEIVE, UPON REQUEST, A VERIFICATION OF THIS DEBT. YOU HAVE THE RIGHT TO DISPUTE ALL, OR ANY PART, OF THIS DEBT. IF YOU DO NOT DISPUTE THE DEBT WITHIN THIRTY DAYS AFTER RECEIPT OF THIS LETTER, IT WILL BE PRESUMED TO BE VALID. THE UNDERSIGNED IS ATTEMPTING TO COLLECT THE DEBT AND THE INFORMATION OBTAINED FROM YOU WILL BE USED FOR THAT PURPOSE.

1/4tc

LEGAL NOTICES

NOTICE OF TAX CERTIFICATE SALE

The following is a publication of land in the City of Mound City, Missouri, upon which a tax certificate is to be offered for sale at the Courthouse door, Oregon, Missouri, on August 22, 2011, at ten o'clock in the morning, according to the provisions of Chapter 140: Revised Statutes of the State of Missouri 1994.

The land is to be sold under the description as listed and the amount as shown due represents the total amount of taxes, interest, and costs, including the cost of the sale; and the certificate will be issued covering as much land as is necessary to discharge the total taxes, interest and the charges as are due at the time of the sale.

The land to be offered is as follows:

Ronald & Kathleen Amos: S 1/2 Lots 20-22, Blk. 16, Mound City Extension. Parcel # 09-09-31-03-10-04. 2008 - \$200.68, 2009 - \$179.43, 2010 - \$164.66.

Total including advertising cost: \$584.63

Tiffany Cain: Lot 1, Block 34, Mound City, original town. Parcel # 12-03-06-01-04-01. 2007 - \$57.75, 2008 - \$51.68, 2009 - \$46.37, 2010 - \$42.57. 2009 Special Tax - \$298.82, 2009 Special Tax - \$237.90

Total including advertising cost: \$774.95

Jim Herr & Loretta Covell: Tract BGN @ SE Cor. Blk. 9, Mound City, O.T. Parcel # 12-03-06-02-10-09. 2008 - \$47.00, 2009 - \$42.73, 2010 - \$39.21.

Total including advertising cost: \$168.80

William & Lou Kinney: E 60' Lots 2 & 3, Blk. 6, Mound City, O.T. Parcel # 12-03-06-02-01-03. 2008 - \$88.89, 2009 - \$81.31, 2010 - \$74.72.

Total including advertisement cost: \$284.78

David D. & Mary E. Nowling: Lots 2 & N 13' Lot 3, Block 4, Mound City, original town. Parcel # 12-03-06-02-09-02. 2007 - \$240.73, 2008 - \$215.73, 2009 - \$183.04, 2010 - \$168.07.

Total including advertising cost: \$847.43

Courtney Ray: W 100' of S 25' Lot 7, Block 7, Mound City, original town. Parcel # 09-09-31-03-30-11. 2007 - \$174.40, 2008 - \$156.36, 2009 - \$131.23, 2010 - \$120.46.

Total including advertising cost: \$622.31

John & Carrie Skidmore: Lots 6 & 7, Block 40, Mound City, original town. Parcel # 09-09-31-04-17-03. 2005 - \$38.00, 2006 - \$34.73, 2007 - \$30.47, 2008 - \$27.27, 2009 - \$22.71, 2010 - \$20.83. 2007 Special Tax - \$252.37, 2007 Special Tax - \$1,721.09, 2008 Special Tax - \$319.24, 2009 Special Tax - \$7,413.15, 2009 Special Tax - \$379.86, 2009 Special Tax - \$209.38, 2010 Special Tax Water Bill - \$288.94, 2010 Special Tax - \$391.58.

Total including advertising cost: \$11,189.48

I, Kelly Miller, Collector of the City of Mound City, State of Missouri, do hereby certify that the foregoing is a true and correct list of the land that will be offered for sale as set forth above.

2/3tc *Kelly Miller, Collector*

IN THE 4TH JUDICIAL CIRCUIT COURT, HOLT COUNTY, MISSOURI - CASE #11HO-PR00021 In the Estate of Frances I. Noland, Deceased NOTICE OF LETTERS TESTAMENTARY GRANTED (Independent Administration)

To All Persons Interested in the Estate of FRANCES I. NOLAND, Decedent:

On July 13, 2011, the last will of the decedent having been admitted to probate, the following individual was appointed the personal representative of the estate of FRANCES I. NOLAND, decedent, by the Probate Division of the Circuit Court of Holt County, Missouri. The personal representative may administer the estate independently without adjudication, order, or direction of the Probate Division of the Circuit Court, unless a petition for supervised administration is made to and granted by the court. The name and business address of the personal representative are:

LILLIAN F. VANDEVENDER, 910 SAVANNAH ST., MOUND CITY, MO 64470.

The personal representative's attorney's name and business address are:

BRIAN ANDREW TUBBS, 222 STATE ST., MOUND CITY, MO 64470.

All creditors of said decedent are notified to file claims in court within six months from the date of the first publication of this notice or if a copy of this notice was mailed to, or served upon, such creditor by the personal representative, then within two months from the date it was mailed or served, whichever is later, or be forever barred to the fullest extent permissible by law. Such six-month period and such two-month period do not extend the limitation period that would bar claims one year after the decedent's death, as provided in Section 473.444, RSMo, or any other applicable limitation periods. Nothing in Section 473.033, RSMo, shall be construed to bar any action against a decedent's liability insurance carrier through a defendant ad litem pursuant to Section 573.021, RSMo.

Date of decedent's death: Feb. 27, 2011

Date of first publication is July 21, 2011.

Karen L. Frede, Clerk

Receipt of this notice by mail should not be construed by the recipient to indicate that the recipient necessarily has a beneficial interest in the estate. The nature and extent of any person's interest, if any, can be determined from the files and records of this estate in the Probate Division of the above referenced Circuit Court.

2/4tc

Brad Pankau's Home & Farm Repair

Roofing, siding, interior/exterior painting, decks, gutter installation & cleaning, electrical & plumbing, drywall & interior remodeling, tree trimming & removal, etc.

BARN & IMPLEMENT SHED REPAIR!

No job is too small! ~ Fully Insured

Call 660-442-3354, 660-254-0156, or 660-442-6343.

NOTICE OF SALE OF REAL ESTATE TO SATISFY TAX LIEN

TAKE NOTICE ALL PERSONS of the sale of the below-described real estate to discharge the taxes, interest and charges which are due thereon at the time of sale. The real estate will be sold at public auction at the North door of the Holt County Courthouse located in Oregon, Missouri, on the 22nd day of August, 2011, commencing at 10:00 a.m. and continuing from day to day thereafter until all are offered for sale. All real estate is located in the City of Maitland, Holt County, Missouri. As many of the lots of any given owner as are necessary to pay the taxes for any given owner shall be sold. The following real estate, including the lawful owner thereof, a statement as to all taxes, penalties, interest and costs due for each year, and the land description are as follow:

PARCEL	OWNER	TAX DUE FOR 2008	LAND DESCRIPTION
10-2-04-04-07-04	Timothy Wilmes	\$445.91	Lot 18 & N. 17' Lot 19 & E. 114' of S. 8' of Lot 19, E. 114' Lots 20 & 21, Blk. 4, O.T.
	Publication	\$49.08	
	Total	\$494.99	

PARCEL	OWNER	TAX DUE FOR 2009	LAND DESCRIPTION
10-2-09-01-22-03	Bengal Properties, LLC	\$69.27	Lot 5 & N. 21.5' Lot 6, Blk. 9, Barnard Addition
	Publication	\$24.54	
	Total	\$93.81	
10-2-09-01-25-12	Michael Johnson	\$108.09	Lot 14, Blk. 11 Barnard Addition
	Publication	\$12.27	
	Total	\$120.36	

PARCEL	OWNER	TAX DUE FOR 2010	LAND DESCRIPTION
10-2-04-04-07-04	Timothy Wilmes	\$278.97	Lot 18 & N. 17' Lot 19 & E. 114' of S. 8' of Lot 19, E. 114' Lots 20 & 21, Blk. 4, O.T.
	Publication	\$49.08	
	Total	\$328.05	

PARCEL	OWNER	TAX DUE FOR 2010	LAND DESCRIPTION
10-2-09-01-22-03	Bengal Properties, LLC	\$109.44	Lot 5 & N. 21.5' Lot 6, Blk. 9, Barnard Addition
	Publication	\$24.54	
	Total	\$133.98	
10-2-09-01-25-12	Michael Johnson	\$143.12	Lot 14, Blk. 11, Barnard Addition
	Publication	\$12.27	
	Total	\$155.39	

PARCEL	OWNER	TAX DUE FOR 2010	LAND DESCRIPTION
10-2-09-01-23-08	Dixie Justus	\$101.80	N. 15' Lot 21 & all 22-25, Blk. 8, Barnard Addition
	Publication	\$61.35	
	Total	\$163.15	

PARCEL	OWNER	TAX DUE FOR 2010	LAND DESCRIPTION
10-2-04-04-10-06	Randy Justus	\$115.40	Lots 1-12, Blk. 15, O.T.
	Publication	\$147.24	
	Total	\$262.64	

PARCEL	OWNER	TAX DUE FOR 2010	LAND DESCRIPTION
10-2-09-01-08-01	Wendell Parker	\$99.89	Lots 13-15, Blk. 5, Barnard Addition
	Publication	\$36.81	
	Total	\$136.70	

PARCEL	OWNER	TAX DUE FOR 2010	LAND DESCRIPTION
10-2-04-04-10-08	Mickey D. Smith	\$222.52	Lots 11-14, Blk. 16, O.T.
	Publication	\$49.08	
	Total	\$271.60	

PARCEL	OWNER	TAX DUE FOR 2010	LAND DESCRIPTION
10-2-04-04-07-04	Timothy Wilmes	\$182.51	Lot 18 & N. 17' Lot 19 & E. 114' of S. 8' of Lot 19, E. 114' Lots 20 & 21, Blk. 4, O.T.
	Publication	\$49.08	
	Total	\$231.59	

These parcels of real estate shall be sold because there are delinquent City real estate taxes due to the City of Maitland.

Shirley Markt, Maitland City Tax Collector
500 S. Maple Avenue, Maitland, MO 64466

ROSS AND THOMSON LLP
Doug Thomson - #36805
408 North Market Street
PO Box 370
Maryville, MO 64468
Telephone: 660-582-7468
FAX: 660-582-8790
E-MAIL: doug.rossthomson@embarqmail.com
ATTORNEYS FOR THE CITY OF MAITLAND

Dates of Publication: July 14, July 21, July 28 and August 4, 2011.

1/4tc

Mound City NEWS CLASSIFIED ADVERTISING
CALL 660-442-5423

Rogers Pharmacy
Where State of the Art Technology Meets Old-Fashioned Customer Service
Please log on to rogersrx.com for on-line prescription refills and more.

607 State Street • Mound City, MO
660-442-3355 • Toll Free 800-962-0096
411 Main Street • Tarkio, MO
660-736-5512 • Toll Free 800-803-5630
2524 Frederick Ave • St. Joseph, MO
816-232-3348 • Toll Free 888-261-5400

Farm Services Finder
The local guide to quality products and services for your farm.

Hiawatha IMPLEMENT
1215 Oregon St. Hiawatha, KS 66434
1410 State St., PO Box 310 Mound City, MO 64470
Phone: 785-741-7121 Phone: 660-442-3814
www.hiawathaimplement.com

Rosier Pioneer Warehouse
(660) 442-5372
PIONEER BRAND PRODUCTS Mound City, MO

Innovative Ag Technologies, LLC
29938 Raintree Drive Oregon, MO 64473
Phone: 816-390-7840
Split-Flex CORN HEAD

Golden Triangle Energy
15053 Hwy. 111 • Craig, MO
888-220-5646
www.goldentriangleenergy.com
For Market News & Bids

Northwest Fertilizer
301 W. 2nd St. Mound City, MO
(660) 442-3163
John Ingram ~ Jeff Ingram

Advertise Here!!!
Mound City NEWS ADVERTISING
CALL 660-442-5423

YOCUM SERVICE, INC.
203 E 2nd St. • Mound City, MO
(660) 442-3879

Scheib Drainage Products, Inc.
27987 Hwy. 59 • Oregon, MO
Don Scheib
660-446-2343
Fax: 660-446-2329
Toll Free 1-800-279-3575

Classifieds

GET THE JOB DONE!

BUY • SELL • TRADE • RENT
HIRE • THANK YOU/REMEMBERING • LEGAL SERVICES

CALL THE MOUND CITY NEWS TO PLACE YOUR AD • 660-442-5423

MISCELLANEOUS

WANTED TO BUY - Recycling aluminum cans. M-W-Sat., 9:30 a.m. - 2:30 p.m. Old N. Hwy. 73, south of swimming pool, Falls City, NE. 12/2pm

HOWARD'S GUN REPAIR- 12315 Hwy. 59, Craig, MO, 64437. 660-683-9401. 17/tfc

EMU OIL- Arthritis and joint pain, burns and sunburns, aging skin, cuts and abrasions. Hand lotion. G & L Enterprises. Call 816-387-7332 or 660-442-5688. 40/tfc

HANDYMAN SERVICE- Roofing inspection and repair, also carpentry, plumbing and electrical work. O'Neil Long, 660-442-3957 or 660-572-0185. 3/tfc

RAFTER CROSS VETERINARY SERVICES- Now in Mound City, MO. Reduced boarding for flood victims, call for availability. Taking appointments five days a week, 660-572-0102. 51/tfc

GREG'S JEWELRY - Located at 307 E. 5th St., in Mound City, MO, offers ruby jewelry, July's birthstone. Call 660-442-3739. 52/4tc

NORTHWEST ELECTRIC- Residential, commercial, agricultural. Over 20 years combined experience. Free estimates. Owners Shannon Long and Jason Perry. Call 660-744-2534. 1/4tp

FOR SALE- Butcher hogs, 1/2 or whole. Larry Wright, 816-294-6788. 3/1tp

REAL ESTATE

HOUSE FOR SALE- Three-bedroom, one and a half bath, next to school, close to downtown in Mound City, MO. Solid house, quick possession. **United Country-McChristy Realty & Auction**, Randy Patterson, 816-803-3951. 3/1tc

FOR SALE- Three-bedroom, bath and one-half, country setting, small acreage. **United Country-McChristy Realty & Auction**, Randy Patterson, 816-803-3951. 3/1tc

CLASSIFIED ADVERTISING
CALL 660-442-5423

ENTERPRISE REALTY

Jim Loucks, Sales Agent
816-390-2749
Office 877-669-7653
www.entrealty.com

LAND FOR SALE

- 190 A. Bottomland, Platte County
- Country Home w/Small Acreage

HOUSE FOR SALE BY OWNER



1606 Sunset Blvd. • Mound City
Ready to move in home with THREE LOTS. The house has four bedrooms, two full baths, cathedral ceiling dining room with fireplace, living room, family room with fireplace, recently remodeled kitchen with new stainless steel appliances, 20 x20 deck, concrete driveway and 2-car garage. Call Stan Seitz at 816-262-4271 or 660-442-5672.

THANK YOU/REMEMBERING

The 2011 National Mound City FCCLA STAR Event participants would like to thank the Mound City community for your wonderful support in helping us get to our national competition in Anaheim, California.

We want to thank our fellow FCCLA members for their support in helping raise the money to attend this event and their moral support. A special thanks to the clubs and businesses that supported us with donations - BJG Club, Beta Sigma Phi Sorority, Mound City Booster Club and Johnson Insurance. The support of our local school board and administration is also appreciated and a positive force behind our accomplishments. Thanks again!

The support of our community is always a blessing and greatly appreciated. We cannot list everyone here, but we want to thank all who supported us at our Sunday luncheon in June at the Christian Fellowship Church and for the generous use of the church itself for the dinner. Another thank you goes out to all of those who kindly participated in our "Flocked" fundraiser. We appreciate your "sense of humor" and patience in allowing flocks of flamingoes to light in your yards. We also thank those who donated to the cause even though the birds did not find their way to your yard.

Thank you to a wonderful and supportive community!
Abby Haer, Merkin Haer, Cavina Metzgar, Jordyn Pankau, and Adviser - Karlene Harrison

SHINGLES

CLEARANCE COLORS
\$10/Bundle
(\$30/Square)
All Sales Final

McIntire Building Center
Do It Best Rental Center

108 W. 7th St. • Mound City, MO • 660-442-5416
Hours: Monday-Friday - 7:30 a.m. - 5 p.m. Saturday - 7:30 a.m. - 4 p.m.

WANTED

WANTED- Outdoor projects in Mound City to be completed by Vacation Bible School participant the week of Aug. 1-5. Call 660-442-3104 to get your name on the list. 1/3tc

NEED SOME CLEANING DONE? By the hour or by the job, locally. Call Carol at 816-390-7978. 3/1tp

CLASSIFIED ADVERTISING
CALL 660-442-5423

HELP WANTED

HELP WANTED MAINTENANCE

Ames True Temper, #1 manufacturer of Striking Tools in the US, has one position open for a maintenance person. We are looking for a self-motivated individual with a good work record for maintenance and repair of production equipment including, but not limited to, presses, conveyors, CNC lathes and other production equipment. Qualified applicant will be mechanically inclined, have working understanding of electricity and be able to do simple metal fabrication. CNC knowledge is a plus. We offer competitive wages and benefits. Applications may be picked up at Ames True Temper, 314 Highway 73, Falls City, NE 68355. 402-245-4426. EOE

First Student

NOW HIRING and TRAINING PART-TIME SCHOOL BUS DRIVERS

FIRST STUDENT is now hiring and training School Bus Drivers for the South Holt, Mound City, and Craig School Districts!

We are proud to offer:

- Starting pay at \$10-12/hour
- Daytime, evening and weekend shifts available
- All required pre-employment training provided
- Guaranteed hours and set schedule

To qualify, you must be at least 21 years of age, have a valid driver's license, three years of driving experience and be able to pass a background investigation and a drug test.



For more information and immediate consideration, please call (660) 442-5441

COTTON BODY SHOP & TOW SERVICE

Larry & Troy Cotton
Oregon, MO
Shop: 660-446-2008
Home: 660-446-2561

WILLIAMS RECYCLING BUYING CANS

3 Days A Week
(Tuesday, Thursday & Saturday)
10:00 a.m. - 2:00 p.m.
South of Staples Building
Mound City
(Follow Signs)

Commercial PRINTING

Mound City NEWS
511 State Street
Mound City, MO
660-442-5423

MC Auto & Truck Repair

Mound City, MO
660-442-5600

Summer Heat Hurts Your Car. Get Your Coolant System & Air Conditioner Checked Today!

Monday-Friday:
8 a.m. - 5 p.m.
Saturday:
8 a.m. - 12 noon

It's all about you.

Superstar treatment with get-gorgeous know-how. Share-worthy secrets that are simply divine. Laugh-out-loud friendships that last a lifetime. Feel-good beauty that really makes a difference. Exercise the right to make beauty all your own. Ask me how I can help.

Jordan Krueger
Mary Kay® Independent Beauty Consultant
816-284-3099

J & E Concrete
Commercial & Residential Concrete Work
Jeff Karsten
Cell: 816-262-5933
Free Estimates

Kathi Clement Realty
www.kathiclementrealty.com
514 B State St. • Mound City, MO 64470
660-442-6500 • Cell: 816-387-3018
kathiclement@yahoo.com
Kathi Clement, Broker

Johnson Heating and Cooling
Casey Johnson, Owner
660-442-6354
Licensed and Insured
Specializing with Trane and Heil models

Weldon's Tree Service
Tree Trimming/Transplanting
Tree and Stump Removal/Tree Shearing
Insured ~ Public Liability
Residential & Commercial
FREE ESTIMATES
(660) 582-3267

MARYVILLE GLASS AND LOCK
• Overhead doors and operators
• Custom residential replacement windows
• Complete locksmithing services
• Commercial - residential glass replacements
(660) 582-3131
5TH AND BUCHANAN, MARYVILLE

NAUMAN CONSTRUCTION & CABINET SHOP, INC.
GENERAL CONTRACTORS
New Construction, Remodeling, Cabinets.
Granite & Solid Surface Countertops
307 State Street • Mound City, MO 64470
Shop: 660-442-5290 Website and e-mail:
Hugh: 816-383-3001 www.naumanconstruction.com
Tracy: 816-596-7159 tracy@naumanconstruction.com

Subscribe NOW!

In-area - \$30/year (Holt, Nodaway, Atchison, and Andrew Counties)
\$35/year (Everywhere else)

SUBSCRIPTIONS PRORATED TO BE DUE IN JANUARY

Mound City NEWS

511 State St. • Mound City, MO • 660-442-5423



What appears to be an even more destructive current- Than that of the flood of 2010, rushes over Highway 111, just west of the junction of Highway 111 and Highway 118, at the north end of Big Lake. MoDOT has the financial burden of highways like this that are being washed away. The floodwaters have receded very little, but the extent of the destruction for the county itself has already been estimated to exceed \$7,000,000 in infrastructure damage - which includes county roads, levees, bridges, and culverts.



Golden Triangle Energy starts back up

The Golden Triangle Energy Cooperative in Craig, MO- Moved back to its location last week and began taking contracted grain on Monday, July 25. The bins were full when the company moved its office due to flooding and, as the cooperative crushes 22,000 to 23,000 bushels a day, the plant will soon be resuming normal delivery. Jeff Geib can be contacted with future delivery questions at 660-683-5646.

Flying corn contest

Local DeKalb dealer holds contest

C & M Seed Center, authorized dealer of DeKalb Seed in Mound City, MO, has recently announced the placement of over 80 corn crop signs in area fields which kicked off the 'flying corn contest'.

DeKalb Corporation got its start in the Midwest, in DeKalb County, IL, as the Farmers' Institute, during the late 1890's and early 1900's. In the company's search for an appropriate logo, during that time, dairy cattle were called "mortgage lifters", since the cattle provided enough income for farmers to retain their property during the hard economic times. In the 1920's, raising and selling hogs for commercial purposes helped farmers pay for

mortgages. When the DeKalb association developed hybrid corn, it was certain that a 20% increase in a farmer's yield from DeKalb hybrid corn would provide more income to pay for mortgages than dairy cattle or hogs. In a burst of inspiration, the company decided, "Let's put wings on an ear of corn to represent the lifting of the mortgages".

These 'winged ear' logos can be found on the many field corn signs now located throughout Holt County. Normally, because the winged corn carries the mortgages away, signs are generally placed with the ears flying away from the field.

For the contest, however, a sign has been placed with

the wings carrying the corn into the field. Anyone who spots the 'errant winged ear' can call DeKalb dealer, Kirby Miles, at 660-442-6085, and report the location of the sign and win two bags of seed corn.

After a winner is verified, the sign will then move to a new location and the contest starts all over.



This 'errant winged ear' Of DeKalb corn is hiding somewhere in the countryside. C&M Seed is offering a prize for locating the logo that has been put purposely backwards next to a corn field.

Risk of West Nile virus remains low despite mosquito boom in flood areas

Mosquito populations along the Missouri River have skyrocketed due to recent flooding. The good news is that mosquito species linked to transmission of West Nile virus (WNV) aren't part of this population explosion, said a University of Missouri Extension entomologist.

"The threat of WNV transmission is not necessarily elevated because the types of mosquitoes associated with flooding are not the same as those associated with transmitting WNV," said Richard Houseman. "The abundance of these different species also varies hugely, with the floodwater species being many times more abundant than the vector species, even during years when there is average flooding."

In surveys conducted in recent summers, traps at 12 central Missouri sites caught more than 65,000 mosquitoes belonging to the floodwater species, *Aedes vexans*. During the same collection period those sites caught only about 750 mosquitoes from the three species associated with WNV, called "vector" species.

"This represents a ratio of 99-to-1 floodwater to vector mosquitoes collected over an entire summer in an average year," Houseman said. "In a flood year, when mosquito trap collections are 3-5 times higher than normal, the ratio of floodwater to vector mosquitoes could easily increase to more than 400-to-1." Laboratory screenings of more than 30,000 mosquitoes from St. Louis County found only six mosquitoes that tested positive for West Nile virus, he said.

The floodwater species, *Aedes vexans*, gets its name because it's an aggressive, persistent and "vexing" biter. It feeds on mammals, including humans, and is most active from early evening until midnight. It lays eggs on the soil just above standing water, and these eggs can withstand drought, cold and rain for up to four years. They don't hatch until they are flooded and floating in water with reduced oxygen levels (caused by decaying organic matter). While not linked to WNV, *Aedes vexans* can transmit other diseases to humans and animals, including heartworm in dogs.

"The vector species, *Aedes albopictus*, *Culex tarsalis* and *Culex pipiens* feed on birds as well as mammals, which enables them to acquire WNV from birds and transmit it to humans or horses," Houseman said. These species lay eggs in standing water, which they can find around homes and other buildings in such places as old cans, buckets, birdbaths, potted plants and clogged gutters.

"While it is good news that the risk of WNV remains low despite increased mosquito

populations, do not become complacent," Houseman said. Try to eliminate mosquito breeding habitats by emptying cans, buckets and other containers. In places where you can't eliminate or drain the standing water, products called mosquito "dunks" or "donuts" will kill the larvae. "These products contained a bacterium called Bt and are nontoxic to humans," he said.

Reduce your risk of mosquito bites by keeping windows and doors closed and staying inside during dusk and dawn. When outside, wear long sleeves and long pants and use repellents.

Many insect repellents are usually effective against mosquitoes for less than an hour. "Products containing DEET usually provide protection for up to four hours,"

Houseman said. DEET is available in various concentrations, but concentrations higher than 35 percent aren't much more effective and don't last any longer. "Use lower DEET concentrations on children."

Houseman notes that horses have a much higher incidence of death than humans following infection from WNV and should be protected even during an average year. There is a vaccine for horses to protect against WNV. See a licensed veterinarian for more information.

For more information about mosquitoes, see the MU Extension publication "Mosquitoes" (G7400), available for free download at <http://extension.missouri.edu/p/G7400>.



Summer story time ends at library

The final summer story time with crafts at the Mound City Public Library- Was held on Tuesday, July 26, with 28 students on hand for the prereaders' final session. As many as 45 students and caregivers have attended the story times at the library this summer. The picture above shows Vera Walker, back right, a volunteer who is originally from Brazil, teaching the kids their numbers and colors in Portuguese. Later during the session, she taught them the Samba steps. Program facilitator, Synthia Tunnell Murphy, is pictured back left. Tristan Fernandez, right, son of Drs. Eduardo Fernandez and Maria Espejo, of Mound City, was enjoying his moment in front of the camera. The regular story time for pre-readers will resume Tuesday, August 2, at 10:30 a.m. with librarian Cindy Grant, who was also the summer program coordinator.

**NOW OPEN 24 HOURS!
7 DAYS A WEEK!**
NEW BREAKFAST & LUNCH ITEMS.
BISCUITS & GRAVY/CHILI DOGS
AVAILABLE 24 HOURS!

**MOUND CITY SHELL
FOOD MART**
Exit 84, I-29, Mound City, MO

660-442-3200



Call Ahead & Pick It Up Hot!



The Klub
Nightly Specials - Homemade, Fresh Food
Friday Night: **Seafood Linguini**
Saturday Night: **Prime Rib & BBQ Baby Back Ribs**

**This Week:
BLTs & Caprisi Salads
with Fresh Tomatoes!
Grilled Pork Loins**

North End of Nebraska St., Mound City • 660-442-4043

RAM RODEO SALE DAYS

Take a test drive, get a FREE ticket to the 88th Annual Sidney, Iowa, PRCA Rodeo.
No purchase necessary.
Rodeo Days August 2nd - 6th (5 Performances)

**2011 Model Clearance Sale
Is Now In Progress.
Save On All Models In Stock.**

Visit www.laukempermotors.com to check out our large selection of pre-owned.

Hope To See You Saturday, July 30, For The Party In The Park At Griffith Park In Mound City, MO, From 12 Noon Until 8 p.m.

WWW.LAUKEMPERMOTORS.COM
See Joe, Scott, Jerry, Bill, Steve or Shane today!

Northwest Missouri's Premiere Service Dealer
Serving The Area Since 1946

Laukemper MOTORS

Chrysler - Dodge - Jeep Chevrolet GM

CHRYSLER 1-29 & Hwy. 59 - Mound City, MO 660-442-5438 800-490-8035

3rd & Nebraska - Mound City, MO 660-442-9942 800-381-9942