



Mound City NEWS

Published & Printed in
Mound City, Missouri
Vol. 134, No. 4
75¢
www.moundcitynews.com

Serving all of Holt County, Missouri, since 1879. Home of Squaw Creek National Wildlife Refuge & Big Lake State Park.

Thursday • August 1 • 2013

Mound City Fall Kickoff celebration

The Mound City Booster Club members will be hosting a fall sports' kickoff celebration on Friday, August 23, at 6:30 p.m. at the football field in Mound City. A small meal will be served free of charge for the celebration. The meal will consist of hot dogs, chips and drinks.

The celebration will be to introduce the fall sports' teams and players. The fall teams for football (junior high and high school), volleyball (junior high and high school), cross country and cheerleading (junior high and high school) will be introduced.

If anyone wants to help, please contact Bev Shifflett at 600-442-6215.

Public invited to Graves-Chapple Field Day on Tuesday, Aug. 27

On Tuesday, August 27, the public is invited to the Graves-Chapple Research Center's Field Day near Corning, MO. The annual free event is a chance to find out what is going on at the local research center and to learn more about better management practices and ways to improve the productivity of farms or land.

Registration begins at 8 a.m. and educational tours will start at 8:30 a.m., with the last tour departing at 11:30 a.m. A complimentary lunch, provided by Kent Fisher Insurance, will be served at 12:15 p.m.

Tour topics will include pest management practices, nutrition and herbicide applications, farm income prospects for input and marketing practices, cover crop varieties and field scouting techniques.

For more information on the Graves-Chapple's Field Day, contact Jim Crawford at 660-744-6231 or send an email to Crawfordj@missouri.edu. Visit www.aes.missouri.edu/graves closer to the event for an updated schedule of events.

Over the Top New Life Super Saturday VBS

Children ages 4 through 12 are invited to "Over the Top" Vacation Bible School (VBS) at the New Life Apostolic Assembly Church (307 East 6th Street, Mound City, MO) on Saturday, August 3, from 9:30 a.m. to 4:30 p.m. Vacation Bible School participants will enjoy crafts, games, skits, Bible lessons, food, music, and a ton of fun. The program will begin at 5 p.m. followed by an evening of food and fun for the family. For more information, please contact Theresa Jordan at 660-442-3441.



Youth members of the First Christian Church in Mound City, MO- Traveled to Little Axe, OK, the week of Sunday through Saturday, July 21-27, to help with disaster relief from the tornadoes that occurred in the area in May. Those who attended are pictured, left to right, Donovan Kemerling, Mandy Yocum, Crystal Yocum, Kaitie Smith, Adrienne Messer, Wyatt Meyer, Austin Acton, Jake Meyer, Eryn Acton, Carina Metzgar and Lily Grant.

Youth members travel to Little Axe, OK, for mission work

The "On a Mission Team 2013", from the Mound City, MO, First Christian Church, traveled to Little Axe, OK, the week of July 21-27. Little Axe is a suburb of Norman, OK. The group, comprised of ten youth and eight adults, helped with disaster relief work from the tornadoes that occurred in that area in May. The tornado that hit Little Axe happened the day before the one that struck Moore, OK. The community of Moore, being much more densely populated, has received more publicity and help than the rural areas of Little Axe and Shawnee, OK.

While in Little Axe, the group helped with tree and debris removal, repaired a carport, steps, and a bench, began building a pump house, did yard work, prepared and delivered meals to those still needing assistance, organized sup-

plies available to the survivors, entered information into a data base, and offered encouragement to the residents on days that had a heat index of 106 degrees.

There are many residents still living in tents. One family finally got electricity on Monday, July 22, two months after the tornado struck. Most houses have the roofs covered with blue tarps either waiting on insurance or to save money to replace the roof. Residents are also fighting black mold.

The Mound City group took a break from relief work and traveled into Oklahoma City, OK, to visit the Oklahoma City Memorial and enjoyed a water park for a day. When people found out the group was helping in Little Axe, the response was always that of thanks because they understood that the people there had not re-

ceived the much needed assistance.

The Mound City members returned home understanding how blessed they truly are, and have vowed that while this was their first mission trip, it would not be their last.

The members of the "On a Mission Team 2013" were Donovan Kemerling, Mandy Yocum, Crystal Yocum, Kaitie Smith, Adrienne Messer, Wyatt Meyer, Austin Acton, Jake Meyer, Eryn Acton, Carina Metzgar, Lily Grant, Brenda Haines, Karma Metzgar, Sherry Gayler, Dennis and Sue Nauman, and Dennis and Cindy Reule.

To show their appreciation for the support they have received over the last year, the group will be hosting lunch after church on Sunday, August 4. A slideshow of the highlights of the trip will also be shown.

Panther Pizzeria coming soon

Justin and Hilari Courtney of Mound City, MO, will open Panther Pizzeria, located in the old Bredeaux Pisa building at 1006 State St. in Mound City, on Friday, August 30.

Kristine Johnson of Mound City was hired to manage the pizzeria. The Courtneys' plan is to have three full-time employees and three part-time employees for the pizzeria.

Remodeling of the inside is underway and new signs will be placed outside. The motif will be sports oriented. A couple of flat screen televisions will be placed on the walls for added entertainment. The pizzeria will also house an arcade. A full hot buffet will be offered on a daily basis from 11:30 a.m. to 2 p.m. and two nights a week. The two nights are still being decided upon.

The menu will consist of pizza, pasta, salads, sandwiches, chicken strips, a full appetizer menu and soft serve ice cream. A new feature for the establishment will be a delivery service on Friday, Saturday and Sunday nights.

33rd annual Gene Kent & Melvin Livengood Memorial Fishing Derby

The 33rd Annual Gene Kent and Melvin Livengood Memorial Fishing Derby will be held on Saturday and Sunday, August 10 and 11, at Thurnau's Wildlife Area, west of Craig, MO, on Highway 111 with a start time of 7 a.m.

The divisions for the tournament are as follows: Daily Prize Catches, Youth Division, Catfish Winners' 2-Day Totals and Carp Winners' 2-Day Totals.

To enter or for more information, please contact Doug Livengood at 660-562-7787.



Rain is Heaven sent

Much needed rain- Came down gently and steadily on Monday, July 29, from about 6 a.m. until evening time. Within the last five days the Mound City, MO, area has had a total precipitation amount of 1.09 inches. For the month of July, the total is 2.11 inches.



This redesigned corn crib- Is now being used as an office complex located east of Mound City, MO, on Highway D, Maitland, MO. As of Tuesday, July 23, a total of two working offices are on the main floor and in the future, three or four more offices will be located upstairs.

Corn crib transformation

A corn crib that sits on the farm of J.W. Trimmer (T-Bar Farms), off Highway D, in Maitland, MO, has been transformed into an office complex. The corn crib was completely gutted and construction started a year ago. The corn crib dates back to the 1950's, when Gordon Decker poured the concrete on October 25, 1952.

The complex will house two offices, a conference room and a bathroom downstairs. The upstairs will house three or four more offices, a bathroom and a kitchen area.

The two offices in the main part of the building are already being occupied. J.W. is using one for his farm office and Eric Godwin of Maryville, MO, is using an office for data management.

Eric works for a company out of

Nevada, MO, called Prime Meridian, as a Field Data Technician. The company is leasing the office from T-Bar Farms. Eric has worked for Prime Meridian since his graduation from Northwest Missouri State University, in Maryville, MO.

Prime Meridian is a data management company for precision agriculture data. Prime Meridian has introduced the first independent farm data management system to help growers store and profit from their precision farm data online.

Prime Meridian was created to give growers and the local agri-retailers an independent online forum that streamlines everything related to precision hardware. The company works to serve the grower with online tools and services that makes preci-

Continued on page 2



A Mound City team and a Rock Port, MO, team- Prepare to tee off on Saturday, July 27, during the 9th Annual Ryder Cup with play beginning on the Mound City Golf course in Mound City, MO. The 27 two-man teams from Mound City, Rock Port and Tarkio, MO, played two full days of golf.

Rock Port wins 2013 Ryder Cup

On a beautiful, cool Saturday morning, July 27, at the Mound City Golf Club in Mound City, MO, golfers teed off at 9 a.m. during the 9th Annual Ryder Cup. Nine two-man teams from Mound City, Tarkio, MO, and Rock Port, MO, participated in the event. The best six scores of each session were calculated in the final total.

The teams started tournament play in Mound City for a two-man scramble for nine holes and then traveled to the Rock Port golf course in the afternoon for a nine hole best shot format.

The tournament con-

cluded on Sunday, July 28, in Tarkio for a nine hole two-man scramble and then a nine hole two-man alternate shot.

The winning team was Rock Port with a total score of 847, while Mound City and Tarkio tied with a score of 856.

The Rock Port winning team consisted of Brock Nuckolls, Troy Cook, Logan Pyeatt, Mark Bennington, Bakul Patel, Kaven Wood, Greg Cook, Zac Smith, Jay Hunter, Garrett Schomburg, Chuck Salfrank, Mark Cofer, Rebel Herron, Reid Hunter, Erial Wilson, Curt Graham, Ross Hastert and Demian Ellis.

The flight winners are as follow:

Championship Flight

1st- Miles Jumps and Greg White (Mound City)

2nd- Jay Hunter and Garrett Schomburg (Rock Port)

3rd- Tristan Ray and Derek Rohlfen (Tarkio)

"A" Flight

1st- Ed Salmond and Gary Peregrine (Tarkio)

2nd- Brock Nuckolls and Troy Cook (Rock Port)

3rd- Doug Kline and Rusty Burge (Mound City)

"B" Flight

1st- Ross Hastert and Demian Ellis (Rock Port)

2nd- Matt Livengood and Chris Krueger (Mound City)

3rd- Rebel Herron and Reid Hunter (Rock Port)

News from Tiffany Heights

Residents of Tiffany Heights in Mound City enjoyed the afternoon on Monday, July 22, with a cool refreshing thought of the lazy days of summer. They shucked corn, donated by Matt and Debi Clifton, and then enjoyed pink lemonade and lemonade cookies fresh from the oven. What a summer day.

Pastor Paul Grant and Barbara Hanlon provided Bible study during the morning of Tuesday, July 23. With another month right around the corner, the residents got a chance to do their own thing during the afternoon on Tuesday. The calendars are ready.

A round of jingo was played during the afternoon on Wednesday, July 24. This game is similar to bingo in play, but very different also. Residents get a chance to answer questions. This month they played "I love America" jingo and the questions were about America. Many of the answers were well known.

Dee Ann Heck provided piano before lunch on Thursday, July 25. Bingo volunteers during the afternoon were Shirley Jackson, Mary Lee Privett, Lucille Stull, Jo Ann Loucks, Gordon Robbins, Tracy, Cameron, Grace and Carter Oswald and Jean McCall.

Judi Scarbrough provided glamour nails on Friday, July 26. Residents enjoyed selecting their favorite sundae topping during an ice cream social on Friday afternoon. Strawberry is one of the favorites.

Ellen Kunkel and Sue Gragg entertained on Saturday, July 27. It sure is good to hear a variety of the residents' favorite songs.

Larry Brickey and the Baptist Church family provided Sunday morning services. The River of Hope Fellowship Church conducted the afternoon worship.



Dorothy Heck, a Tiffany Heights resident- Is cleaning corn donated by Matt and Debi Clifton on Monday afternoon, July 22.



Inez VanOrman, a Tiffany Heights resident- Is shucking corn donated by Matt and Debi Clifton on Monday afternoon, July 22.

Nutrition site news

Volunteers at the Nutrition Site in Mound City during the week of July 22 were: Walt and Pat Groves, Gene and Bev Miller, Herb and Mary Ann Beggs, Bill Golden, Addie Trimmer, Yogi Swymeler, Ardis Davis, Carolyn Roberts, Betty Russell, Larry and Carol Brickley, Richard and Alita Meyer, Wendy Ezzel, Emma, Grace and Claire; Jodie Prussman, Sadee, Cholee and Mylee; Sydney Heck, Dee Ann Heck, Wayne and Diane White, Paul Grant, Keith Knaak, Marla Riley and kids, and Pearl Bartle.

Sharing their gardens were Ernest and Linda Hester, and Dave and Shirley Jackson. Delivering meals the week

of August 5, 2013, will be:

Craig - Monday - Walt and Pat Groves and Gene and Bev Miller.

Mound City - Monday and Tuesday - Fred and Kim Kling; Wednesday - Corey Gordon Family; Thursday and Friday - Christian Fellowship Church.

Oregon and Forest City - Monday through Friday - Faith Fellowship Church.

Bingo winners on Friday, July 26, were Ardis Davis, Mary Belle Carter, Marj Field, James Haer, Jerry Zembles and Herb Beggs.

The Mound City Nutrition Site recycles cell phones, ink cartridges, and aluminum cans for cancer (Helping Hand) in two purple cans

by the front and back doors. There are also drop boxes for box tops for the school and donations to the food pantry.

The July products of the month are coffee and sugar. The drawing will be Wednesday, July 31.

Upcoming activities at the Mound City Nutrition Site are:

August 5 - Exercises, 8:30 a.m.

August 6 - Share embroidery, knitting, quilting, etc., sit a spell, visit, share, 12:45 until 3:30 p.m.

August 7 - Exercises, 8:30 a.m.

August 8 - Popcorn, lemonade, and music starting at 10:30 a.m.

August 9 - Cinnamon rolls and donuts, 8:30 a.m.

If anyone can volunteer with preparing or serving cinnamon rolls and/or donuts, please call Addie Trimmer at 660-442-5889.

The upcoming menu at the site is:

Monday, August 5 - Chicken and noodles, mashed potatoes, broccoli, harvard beets, fruit salad and whole wheat roll.

Tuesday, August 6 - Ham, sweet potatoes, green beans, juice and pineapple upside-down cake.

Wednesday, August 7 - Swiss steak, baked potato, zucchini, pears and banana cake.

Thursday, August 8 - Chopped steak, coleslaw, carrots, applesauce, noodles and cookie.

Friday, August 9 - Taco salad, chips, corn, mandarin oranges and ice cream.

Corn crib transformation

From the front page

potential through practical and profitable precision agriculture practices. Record Harvest delivers the necessary knowledge and support to its customers.

An open house for both businesses will take place on Friday, August 2, east of Mound City, MO, on Highway D from 3 p.m. to 7 p.m.

Along with the Prime Meridian office, Record Harvest services will be offered. Record Harvest Global Positioning System (GPS) equipment can help each producer and every acre reach full

potential through practical and profitable precision agriculture practices. Record Harvest delivers the necessary knowledge and support to its customers.

An open house for both businesses will take place on Friday, August 2, east of Mound City, MO, on Highway D from 3 p.m. to 7 p.m.

Established 1879 (USPS 364-920)

Published weekly on Thursdays and entered as periodical publication at the Post Office in Mound City, Missouri 64470.

POSTMASTER - Send changes of address to:

Mound City News, PO Box 175 • Mound City, MO 64470

511 State Street, PO Box 175 • Mound City, MO 64470 (660) 442-5423 • Fax (660) 442-5423

E-mail: moundcitynews@socket.net www.moundcitynews.com

Adam Johnson Owner/Publisher

Jessica Lindsay, Office Manager Dana Zembles, News & Sports

Paige Bierman, News Lisa Yocum, Features Pam Kent, Advertising Joy Johnson, Proofreading

Benjamin Flint, Jennifer Pardue, Todd Puckett, Will Johnson, Print Shop



Member Missouri Press Association

SUBSCRIPTION INFORMATION

\$30 PER YEAR

Holt, Nodaway, Andrew, and Atchison Counties.

\$35 PER YEAR

Elsewhere in Missouri and All Other States.

All Subscriptions Are Due In January

Copies available each week at our office and at: Craig Country Store, Craig; Lakeshore Grill, Prop-In, Big Lake; Forest City Diner, Forest City; Country Corner and Price's Grocery, Oregon; The Smokehouse, Graham; Skidmore Service, Skidmore; Poor Boys Kwik Stop, Maitland; Mound City Thriftway, Kwik Zone, George's C-Store, New Squaw Creek Travel Plaza & I-29 Travel Plaza in Mound City.

QUALITY FARM EQUIPMENT

RETIREMENT AUCTION

Saturday, Aug. 17, 2013, 10:00 AM

Location: 23088 J Hwy, Fairfax, MO 64446

West of Fairfax, MO on J Hwy, 6 miles to farm house on west side of Rd. WATCH FOR AUCTION SIGNS

Featuring: Excellent line of Farm Equipment, Pickup and Tools All main units always shedded and have excellent service records.

2010 John Deere 9670 STS Combine HILLCO Side hill, Greenstar ready, rear wheel assist, Cray Big Topper, duals, engine hours = 917, sep hours 691, 52085R42 Rubber, Serial 1H09670SV90735348

2007 JD8330, dual front and back, ILS Suspension, FWA = 50', Rubber 60%, 2386 engine hours, serial no. RW8330P014623, Greenstar Ready, powershift turns, 4 hydraulics, quick hitch, weights on front and Back, 480/80R50

2002 2500 Chevrolet 4x4, new tires, extended cab, short bed, 122400 miles, Vortex V8, 6.0 C, VIN 16CHK29UXZE233436

2009 John Deere 625FH00625F730813

2008 John Deere 608C H0608CX726043

2010 John Deere 1760 NT Planter, 8-row 30" vac chain drives, 3-bu boxes, Pro-max corn, soybean disks, 350 monitor, Martin trash whips, JD coulters

Rhino 1540 10' Blade 3-way hydraulic

John Deere 2100 5 shank Ripper, minimum till ripper, used only one season

2007 Salford RTS Residue Tillage Specialist 23' wide

2000 Travis Seed Tender, holds 2 seed boxes, serial no. HSC1283

1994 Westendorf WL-42 Pallet Forks and 7' Bucket

1999 Rhino Twister TW96 Mower

1998 Hesston 9' Mower

2004 Head Wagon for corn head Bin Fans

2012 Patriot Bean Head Trailer, hold only 25' Platform

8 row Unverferth Corn Head Trailer Bin Fan, Spread all Mfg. Co.

Air Compressor

4 Government Bin Fans

6" wide 9' unloading auger for 18' bin

Kewanee 1020 18' Disc, 22" blades

28' John Deere Rotary Hoe 3-pt.

8 John Deere Rear Weights, 100lbs

Hoist Feed Wagon

Coleman Power Mute Air Compressor, 6HP

16' Car Trailer

Wil-Rich 24' Field Cultivator

John Deere 898A, 5-bar Hay Rake

Farm Supply 3-pt. Posthole Digger with an 8' auger and 1.5 extension

Eversman Dirt Mover, 3 yard

500-gal. tank with pump

100-gal. tank, rectangular 12 V pump

Several Open End Wrenches

John Deere Electric Impact

Craftsman 3/4" Drive Socket Sets

Deep Well Impact

(2) 16' log chains

Friesen 275 RT Belt Drive Seed Express, Honda motor, 7 Bags, 2 spouts

2 Sets Corn Head Roller Heads

Great Plains Solid Stand

24' Folding Drill, Model No. 2SF2436008930134 Serial No. GP-2845F

Brent 472 500-bu. Grain Cart, Model No. GC472, Serial No. 472976

1000-gal. Fertilizer Trailer, dual tandem with 5-HP Briggs & Stratton motor with pump and Inductor

LUNCH ON GROUNDS

AUCTIONEER'S NOTE: It is a pleasure to work for Dale and Dolly Kemerling. Come to this auction expecting good quality, well cared for equipment.

- Chance Clement

Dale & Dolly Kemerling, Owners

Fairfax, MO

Auction Managed and Conducted by:



Auctioneers: Chance Clement, Skidmore, MO 660-853-1868 • Greg Clement, Maitland, MO 660-442-5436

For photos and info: www.chanceclementauctions.com • www.clementauction.com

Terms: cash or personal check, no credit cards please. All announcements sale day take precedence over printed material.

Chamberlain Funeral Home & Monuments

1705 Ridge Drive Mound City, MO 442-5300

ATTENTION: OFFERING MEN'S & WOMEN'S 12-STEP DRUG & ALCOHOL RECOVERY PROGRAM

AT HWY. 159 & I-29 MOUND CITY, MO

EVERY WEDNESDAY 7:00-8:00 P.M.

FOR INFORMATION CALL 660-442-6305 or 660-442-6085.



Charles E. Linville

Charles E. "Junior" Linville, 89, Skidmore, MO, died Tuesday, July 23, 2013, at Golden Living Center, Maryville, MO. Junior was born April 11, 1924, in Skidmore, to Charles Everett, Sr., and Hazel Naomi (Hart) Linville.



Junior was a graduate of Kemper Military Academy, Boonville, MO, and was a lifetime resident of the Skidmore area. He owned and operated Skidmore Oil Company for a number of years and helped his wife, Frieda, in Barrett Tax Service and retired as a Veterans' Service Officer with the Missouri Veterans' Commission.

Junior married Frieda Barrett Linville on July 31, 1943, in Muskogee, OK. Frieda preceded him in death on March 17, 1996.

Junior was a US Army veteran serving in WWII as a 1st Lt. in the 1st Infantry in both Italy and the Philippines.

Junior served on the Skidmore City Council and as city clerk, the board of Nodaway County Group Homes, Services for the Developmentally Disabled and the Senior Citizens' Tax Board. He was a 50-plus member of the American Legion and Masonic Lodge, member of Moila Shrine, Lions Club, Elks Club 40/8, 338th Infantry Association, Order of the Eastern Star, Life Member of the Disabled American Veterans, longtime member of the Maryville Bowling Association, and the Skidmore United Methodist Church.

Junior was preceded in death by his parents and his wife. Junior is survived by his son, Charles Frederick Linville, of the home; a sister-in-law, Vernal Lawnick, Maryville; and several nieces, nephews and cousins.

Graveside services and burial were Thursday, July 25, 2013, at Hillcrest Cemetery, Skidmore. Military honors were conducted by the James Edward Gray American Legion Post 100.

Memorials may be made to the Shriner's Hospital for Crippled Children or the Skidmore United Methodist Church. Services were under the direction of Price Funeral Home of Maryville, www.pricefuneralhomemaryville.com.

Claire Hendrix

Claire Ilene Hendrix of Mound City went to be with her Heavenly Father on Thursday, July 25, 2013. On March 9, 1919, Ilene was born to Raymond and Verna (Houck) Johnson in Bedford, IA. She married Harold Hendrix on December 9, 1939, and had nine children. Harold passed away in 1985.

Ilene was also preceded in death by her parents; son, James; one grandchild; two great-grandchildren; three great-great-grandchildren; her brother, Eugene Johnson; and her sister, Annabelle Lucas.

Survivors include Ilene's children, Carrol Bruntmyer and Helen Runnels of Mound City, MO, Bonnie Crum (Don) of Clarinda, IA, Karen Sipes of St. Joseph, MO, Larry (Denise) Hendrix of Maryville, MO, Sandy Cochran of Maryville, Richard (Betty) Hendrix of Fairfax, MO, and Joyce (Randy) Young of Lubbock, TX; 19 grandchildren; 41 great-grandchildren; and six great-great-grandchildren.

Ilene was a resident of Tiffany Care Center in Mound City for seven years. She enjoyed life and family.

Services were held on Monday, July 29, 2013, at 10:30 a.m. at the Chamberlain Funeral Home in Mound City. Interment was held at Maitland Cemetery in Maitland, MO. Memorials may be directed to the Mound City Nutrition Site, or a charity of the donor's choice. Online condolences may be left at www.chamberlainfuneral.com.



The Atchison County Back-to-School Fair- Was held in the Tarkio Community Building, in Tarkio, MO, on Tuesday, July 23, and was hosted by Community Hospital-Fairfax, MO. The many donors of supplies and agencies make this event possible for both Atchison County and Holt County children.



Community Hospital-Fairfax - Hosted the Holt County Back-to-School Fair on Wednesday, July 24, at The Klub in Mound City, MO. Children received a backpack full of school supplies after visiting fifteen booths during the informational fair.

Over 100 attend Atchison County and Holt County Back-to-School Fairs

The Atchison County and Holt County Back-to-School Fairs were hosted by Community Hospital-Fairfax (CH-F), MO on Tuesday and Wednesday, July 23 and 24, respectively. One hundred sixteen children and fifty-five families attended the events where CH-F staff members, volunteers and a host of other agencies took part in this baseball themed event where each child was encouraged to "hit a home run" in the 2013/2014 school year.

The Atchison County and Holt County Back-to-School Fairs are invitation only events. CH-F partners with Community Services, Inc., to determine who is eligible to attend. Once the children and their families arrive, they are treated to a variety of differ-

ent learning experiences. Health related booths consisted of Atchison County school nurses providing eye, hearing, lice and blood pressure checks; healthy eating by CH-F Dietician, Kay Wing, and the University Extension Dietician, Gena Ripley; and stretching exercises by CH-F Physical Therapy Staff. Joining these booths were Catholic Services, Elaine Bledsoe and Taryn Wennihan providing free haircuts, Holt County Christmas Toy Fund (providing clothing vouchers for Holt County children), CH-F Disaster Preparedness Committee, Northwest Health Services, the Division of Family Services, Family Guidance, Community Services, Kansas City Power & Light, Atchison-Holt Electric Cooperative, MERIL, Troop H Missouri Highway Patrol, Holt County Health Center, Missouri Career Center, Head Start, Albany

Regional Office-Family Support, United Way, Special Olympics and Girl Scouts.

After visiting each booth, children were provided with a backpack full of school supplies, \$15 worth of Payless gift cards, new socks and underwear and a package of toiletry items. Each backpack was provided by

the Salvation Army of Atchison and Holt counties. The rest of the supplies, toiletries and Payless gift cards were provided by donors from each county. Please visit www.FairfaxMed.com for a full list of donors without which the Back-to-School Fairs would not be possible.

Premier Buchanan Co. LAND AUCTION
 195 ac. m/l (148.50 ac. tillable)
THURSDAY, SEPTEMBER 26 • 10 A.M.
 Faucett Lions Community Center, Faucett, MO
 Short Legal: 195 ac. m/l in Secs. 8 & 9, Twp. 55N, R 35W.
 Auction Managed & Conducted By: Greg Clement Auctions LLC
 AUCTIONEERS:
 Greg Clement, Maitland, MO, 660-442-5436, call 816-387-3652;
 Chance Clement, Skidmore, MO, 660-853-1668; and
 Justin Gregory, Mayetta, KS, 785-250-8412
 Pics. & Info.: www.clementauction.com • e-mail: gclement@nwmo.net

Falls City Jaycees to host 23rd Annual Truck and Tractor Pull

The Falls City, NE, Jaycees will host the 23rd annual Truck and Tractor Pull on Friday, August 2, in Falls City, on the Falls City Community Field located 2 miles south of town on the Highway 73 and 703 Loop starting at 6 p.m. Registration is from 5 p.m. to 7:30 p.m. A driver's meeting will take place at 5:45 p.m. A concession stand and beer garden will be available on the grounds.

The classes scheduled for the event include: Farm Stock, 10500# 3LM 466 Turbo, Non Turbo, 9500 Pro Farm, 2WD Mod. Gas P.U., 10500 Hot Farm, 10500 Pro Farm, 5800 4wd P.U., 11500 Pro Farm, 11500 Hot Farm, 8000#

2.6 Turbo Diesel P.U., 6300 4wd P.U., 13500 Pro Farm, 13500 Hot Farm and Open Diesel. Prizes for the event will be awarded. Admission for the truck and tractor pull includes: 10 years and older, \$10; children 5 to 9 years old, \$5; and 4 years old and younger are free.

For more information on this annual event, please contact Cory Snethen at 402-245-7486; Tim Bailey at 402-883-8374 or Chris Fischer at 785-288-1606. For a list of rules, go to fc-jaycees.org.

QUACKERS LTD **HAPPY HOUR 3-6 p.m. Daily**
 Kitchen Hours - 10:30 a.m.-9:00 p.m.
 Full Menu and Carry-Out Available
 Open Every Day But Sunday
 Home Cooked Lunch Specials Daily
 ~ Golfer's Special ~
Wednesday & Thursday Nights
Evening Specials
Monday - Pizza & Wings (Happy Hour Prices All Evening)
Tuesday - Tacos
Wednesday - Chicken Fried Chicken
Thursday - 10 oz. Top Sirloin
Friday - Catfish or Shrimp
Saturday - Rib Eye
 WiFi Available! ~ Touch Tunes
 Closed Sunday ~ NON SMOKING!!!
 660-442-5502 • 1012 State St. • Mound City, MO

Your Full-Service Memorialist Since 1935
 • Monuments
 • Markers
 • Mausoleums
 • Plaques
 • Lettering
 • Cleaning
 • Custom Designing
Van Vickle Monuments
 1717 Frederick St. Joseph
 Toll Free
 1-877-232-5882

Family Matters:



An informative message on a sensitive subject.

“What if I can't afford the funeral?”

A funeral is not the time to worry about costs, and we know that.

That's why we offer a wide range of cost options so we can create a service within a budget that is comfortable for you... because it's what's in your heart that matters—not what's in your purse.

Judith Crawford Long
 Judith Crawford Long
 C (816) 294-0231 • H (660) 442-3617

Pettijohn & Crawford
 Family Funeral Service
 1405 Nebraska, Mound City, MO 64470

Kurtz Rural Aviation
 Mound City, MO



Attention Farmers:

• **REDUCE STRESS DURING GRAIN FILL AND IMPROVE STALK QUALITY DURING HARVEST TIME** •
 High stress during grain fill reduces yield and can severely reduce stalk quality which can lead to down corn at harvest. Headline Amp is the leader in plant health and disease control.

Now is the time to talk to Garold Kurtz about treating your corn acres with Headline Amp Fungicide.

Headline Amp provides powerful protection for your corn:

- Maximize Yield - (11.9 bu/Ac. increase in 2012) in over 3,200 side-by-side comparisons
- Minimize Risk - Plant Health benefits improve the corn's tolerance to heat and drought stress
- Improve standability and harvest efficiency with healthier and stronger corn stalks

We are taking fungicide application orders, and therefore will be glad to meet with you and go over your field maps and answer any questions or concerns.

There is a reason why growers use Headline Amp and Headline Fungicide on more corn and soybean acres than all other fungicides combined!

We look forward to working with you in making 2013 a prosperous year in agriculture.

Kurtz Rural Aviation
 660-442-5611 (Office)
 660-442-6282 (Garold's Mobile)
 kurtzav@embarqmail.com



Todd Morrison
 BASF Representative
 816-223-9692
 todd.morrison@basf.com

Area Church Information

CRAIG

Craig Presbyterian Church

Worship Service, 9:15 a.m.
Rev. Robert Fleming

Sharp's Grove United Methodist Church

4.5 mi. north of Craig on Hwy. 59 • Rev. Jeremy Blevins
Worship Service, 8:45 a.m.

Craig Community Church of the Nazarene

105 S. Ensworth Street • Keith Knaak, Pastor
Sunday School, 10 a.m., Worship Service, 11 a.m.
Wed. Night Bible Study, 5:30 p.m., Wed. Kingdom Kids, 3:30-5:00 p.m.,
Wed. Night Youth Group, 6:30-8:00 p.m.

Church of God

Sunday School, 10:00 a.m., Worship, 11:00 a.m.

FILLMORE

The Lighthouse

Exit 65 on I-29 • Pastors Tim and Faith Uzzle
Sunday Worship: 10 a.m., Thurs. Bible Study: 7 p.m.
www.fillmorelighthousechurch.org

GRAHAM

Graham Union Church

Sunday School, 9:30 a.m., Morning Worship, 10:30 a.m.
Evening Service, 6:30 p.m., Wednesday night, 7 p.m.

United Methodist Church

Connie Ury, Pastor
Sunday School, 9 a.m., Worship, 10:15 a.m.

MAITLAND

First Christian Church

4th and Ash • Bill Gazaway, Pastor
Sunday School, 9:15 a.m., Worship Service, 10 a.m.
Sunday Night Worship, 7 p.m., Wed., Youth Rallies, 7 p.m.

United Methodist Church

217 S. Maple Avenue • Connie Ury, Pastor
Worship Service, 9 a.m.

MOUND CITY

Community of Christ

1410 Nebraska Street • Theresa Mackey, Pastor 660-446-2048
Sunday School, 10 a.m., Worship Service, 11 a.m.

Christian Fellowship

18080 Hwy. 59 • Jim Brown, Minister
Sunday School, 9:30 a.m., Worship, 10:30 a.m.
Senior High Youth, 7:00 p.m. • www.christian-fellowship.net

Holy Trinity Lutheran Church

1413 Nebraska St. • Rev. Brian Lemcke
Worship Service, 10:30 a.m.
Bible Class or Sunday School, 9:15 a.m.

First Christian Church

402 E. 5th Street • Paul Grant, Pastor
Sunday School, 9:30 a.m., Worship, 10:30 a.m.
Wednesdays- Bible Study, 12 p.m.
www.firstchristianmoundcity.org

Mound City Baptist Church

1308 Savannah Street • Pastor Nathan Lowe
Sunday School, 10:15 a.m., Worship Service, 11:15 a.m.
Tuesday Bible Study, Larry Brickey, 6:30 p.m.;
Acteens (K-12 Grades), 4:00 p.m. - 660-853-2089
Youth Group, 5:00 p.m. - 6:30 p.m.

Mound City United Methodist Church

312 E. 7th St. • Pastor Jeremy Blevins
Sunday School, 9 a.m., Sunday Service, 10 a.m.

New Liberty and Big Lake Baptist Churches

County Road 140 • Richard Lionberger, Pastor
Sunday School, 9:45 a.m., Worship, 10:30 a.m.
Churches have now combined.

New Life Apostolic Assembly

U.P.C.I. - 307 E. 6th, Mound City • Pastor Scott Jordan
Worship Service, 11 a.m.
Life Night Bible Study & Revolution Youth Group
Thursdays, 6:30 p.m.
www.newlifeupci.org - 660-442-3441

Benton Church

An 1880s Church in the 21st Century • Pastor Jim Broker
1/2 mile south of Squaw Creek Truck Plaza on Hwy. BB
Worship Service, 10:00 a.m. on 1st Sunday of each month
For information, call 660-928-3665

OREGON

St. Patrick's Catholic Church

303 Grand, Forest City • Father Peter Ullrich, OSB
Pastor and Parish Administrator

Oregon Church of the Nazarene

207 W. George • Keith Knaak, Pastor
Sunday School, 8 a.m., Worship Service, 9 a.m.

New Point Christian Church

24135 Stone Hill Rd. • Brian Buck, Minister
Sunday School, 9:30 a.m., Worship, 10:30 a.m.
Fellowship Dinner, 4th Sunday of month following church

REGIONAL

River of Hope Fellowship

Hwy. 159 & I-29, Mound City
442-0197 or 442-6305 • Pastor David Showalter
Sunday School, 9:15 a.m., Worship, 10:30 a.m.

SKIDMORE

St. Oswald's-in-the-Fields Episcopal Church

30996 X Avenue, Skidmore, MO
2nd Sundays - 11 a.m., Morning Prayer service by Lay Reader
4th Sundays - 11 a.m., Eucharist Service

"Everywhere Fun Fair" VBS to be held

The Mound City United Methodist Church in Mound City, MO, will be holding "Everywhere Fun Fair" Vacation Bible School the evenings of August 7 through 9.

On Wednesday and Thursday, August 7 and 8, the time and place will be from 6 p.m. to 7:30 p.m. in the church at 312 East 7th Street. On Friday, August 9, there will be an "All Church Cookout and Pool Party" from 6 p.m. to 9 p.m. The cookout and pool party will be held at Griffith Park and the Mound City Swimming Pool in Mound City.

On the nights of Wednesday and Thursday, children will play games, make crafts, hear Bible stories and be served a light supper. On Friday, August 9, the evening will be a church fun night.

If anyone needs information about registration, please contact the church office at 660-442-3970; stop by the office between the hours of 9 a.m. to 5 p.m. on Tuesday and Thursday; or e-mail questions to moundcityumc@gmail.com.

Wheeler to celebrate 80th birthday

Maurice C. Wheeler of Mound City, MO, will celebrate his 80th birthday on Wednesday, July 31.

Maurice has enjoyed 58 years of marriage with his wife, Marie. Maurice and Marie Wheeler are the parents of four children: Linda and husband, Bob Landzettel, of Leavenworth, KS; Glenn and wife, Karol, Wheeler of St. Joseph, MO; Greg Wheeler and Gary and wife, Joy, Wheeler, all of Mound City. They have six grandchildren and three great-granddaughters.

Maurice graduated from Elmo, MO, High School. He then attended college and received his Bachelor of Science degree from Northwest Missouri State University in Maryville, MO. He received a Master's Degree from Middle Tennessee State University in Murfreesboro, TN. He taught science, math and indus-



Maurice Wheeler

trial arts in the cities of Clearmont, Clarksdale, Stewartsville, Union Star and Mound City for 38 years and he retired in 1993.

Maurice would enjoy receiving letters, cards and visits from his former students, friends and relatives at 311 E. 5th Street in Mound City, MO 64470.

Mound City Kiwanis Club holds meeting

The Mound City Kiwanis Club met at the United Methodist Church in Mound City, MO, on Wednesday, July 24, 2013, with 12 members and 1 guest present, Ruthie Steele. Ruthie presented a program on cardiopulmonary resuscitation (CPR) and all in attendance had an opportunity to practice CPR on the mannequins.

There will be another gun raffle on Labor Day as a Kiwanis fund raiser. There is a plan for the Party in the Park this fall. Tuesday, August 13, has been selected as a spouse night out in lieu of a weekly meeting. Ideas were discussed considering the replacement of the cook shack.

Berniece Burnsides to celebrate 96th birthday on Monday

Berniece Burnsides, Mound City, MO, will celebrate her 96th birthday on Monday, August 5, 2013. She was born in Forbes, MO, on that date in 1917 to Delbert and Ada McAfee Bridges. Her older sisters, Sadie (Mrs. Harve Hall), and Mary (Mrs. George Cotton), are now deceased.

Berniece married Ray Burnsides, in Forbes, and they were parents of three sons, Bill, Jim and Mike. Ray died in 1997. Their son, Jim, passed away in 2009.

Berniece is Grandma B. to eight grandchildren, seventeen great-grandchildren, and eleven great-great-grandchildren!

Berniece's family would like to honor her on this special celebration with a card shower. Birthday wishes and congratulations can be sent to Berniece at 1531 Nebraska St., Mound City, MO 64470.

Baby girl for Kephart and Schroder

April Kephart and Joshua Schroder of Craig, MO, would like to announce the birth of their first child, Kinzly Leanne Kephart. Kinzly was born Thursday, July 25, at 3:25 p.m. She weighed 6 pounds and 8.6 ounces.

Kinzly's maternal grandparents are Chris and Tracey Kephart of Craig, MO. The paternal grandparents are Traci Bennett of Craig, MO, and Delilah Scronce, Darell Scronce, Larry Pierce and Dean Schroder.

Kinzly's great-grandparents are Sandy Cook of Gabbs, NV; Dennis Haywood of Gabbs, NV; the late Guy and Martina Kephart of Corning, MO; Kathy Schroder of Omaha, NE; and Hazel Skelton of MoKane, MO.

J.C. Heck Reunion held in Mound City

The 46th annual J.C. Heck Reunion was held on Sunday, July 21, at the Mound City Community Building. A potluck dinner was served to around 67 family members. The Irvin Heck family served as hosts.

After the meal, a short business meeting was conducted by Leslie Kingery. Doug Kingery read the minutes and Jim Heck gave the treasurer's report. The Dean Heck family and Jeff Livengood family will host the 2014 reunion to be held on the third Sunday of July, location to be determined later.

Those attending were Joyce and Devin Lyle of Aurora, CO; Ryan, Sarah, Sophia, Campbell and Robert Gregory of Pleasant Hill, MO; Donna Mae Heck, Larry and Debbie Heck, and Donna Heck, all of Maitland, MO; Evan, Lori, Dayton and Weston Tally of Maryville, MO;

Tamzen Jenkins, Clayton and Mary Jo Suckstorf, all of Burwell, NE; Cathy and Dan Saxton of Bolckow, MO; Jeff, Christy and Jessica Livengood of Craig, MO; Allen Heck, and Mike, Amanda, Kenton and Carson Saxton, all of Savannah, MO; Brandon and Ava Heck, and Andy, Amy, Connor and Emma Keustersteffen, all of Lee's Summit, MO; Audrey and Phyllis Heck, Doug and Leslie Kingery, and Shawn, Kate and Abby Drew, all of St. Joseph, MO; Gary and Cheryl Miles, Miles Loucks, Dorothy Heck, Lewis and Melinda Tally, Cameron and Amy Tally, Wayne and Betty Heck, Jennifer, Gabrielle and William Heck, Gary, Dee Ann and Sydney Heck, Jim and Jan Heck, Billie Heck, Debbie Friend, Irvin Heck, Bob, Cindy and Blair Heck, and Jarad Owen, all of Mound City, MO.

"Two Nights at the King's Castle" VBS

The Mound City Baptist Church in Mound City, MO, at 1308 Savannah St., will host its Vacation Bible School (VBS) on Sunday, August 4, from 5 p.m. to 8:30 p.m. and on Monday, August 5, from 4 p.m. to 8:30 p.m.

On these two nights children from grades kindergarten to 7th grade will enjoy a Festival of Purim, King's Pond water games, crafts, music, Bible stories and a King's parade. Preschoolers are welcome to attend, but must attend with an adult. A dinner meal will be provided and participants are asked to bring extra clothes due to the water games.

Over the Top

New Life SUPER SATURDAY VBS

Saturday, August 3

9:30 a.m.-4:30 p.m.

307 East 6th St., Mound City, MO
(Ages 4-12)

Crafts, Games, Skit, Lesson, Food,
Music, and a ton of Fun!

Program at 5 p.m. followed by an evening of food and fun for the family.

For more information, please contact Theresa Jordan, 660-442-3441

SAVE THE DATE

Missouri Boatride Bluegrass Band

Saturday, September 7 • 7 p.m.
State Theater • Mound City, MO

Tickets: \$20/Advance or \$25/Door
\$10/Student

Call 660-442-5909 for ticket orders.

VENDORS WANTED

if you GROW it, BAKE it or MAKE it...join us!



7-11am
at the fairgrounds
(by the Velma Houts Building)

first & third
saturdays

THRU OCTOBER

follow us rptourismboard

FOR MORE INFO CONTACT BRANDY MYERS 660-253-2832

Back-to-school savings available in Missouri during sales tax holiday August 2-4

Missouri's annual sales tax holiday begins Friday, August 2, and runs through Sunday, August 4. During this time, the state sales tax will not be assessed on certain purchases, including school supplies, personal computers and some clothing. Local governments can also participate in the holiday and increase the savings for shoppers during the holiday.

"The annual sales tax holiday is a perfect opportunity to get some or all of your back-to-school shopping underway and save some money," said John Mollenkamp, acting director of the Missouri Department of Revenue. "When local governments participate in the holiday, the savings can add up to as much as 8 or 9 percent."

The state sales tax will not be charged on the following items during the holiday:

- Clothing that does not have a value of more than \$100. Eligible clothing includes standard apparel worn on or about the body, and includes footwear. It also includes material to make school uniforms or other school clothing. It does not include accessories such as watches, jewelry, handbags, handkerchiefs, umbrellas, scarves, ties, headbands and belt buckles.

- School supplies, not exceeding \$50 per purchase, that are used in a standard classroom for educational purposes. School supplies include textbooks, notebooks, paper, pens, pencils, crayons, art supplies, rulers, book bags, backpacks, handheld calculators, chalk, maps

and globes. School supplies do not include CD players, headphones, sporting equipment, portable telephones, copiers or other office equipment.

- Personal computers that don't cost more than \$3,500 and computer peripheral devices that don't exceed \$3,500. A personal computer can be a laptop, desktop or tower computer system which consists of a central processing unit, random access memory, a storage drive, display monitor, keyboard and other related devices. Peripheral devices include items such as a disk drive, memory module, CD drive, microphone, modem, motherboard, mouse, speakers, printer, scanner, sound card or video card. Computer software is considered a school supply and is free from sales tax if its value is less than \$350.

The sales tax exemption is commonly referred to as the Back-to-School Sales Tax holiday because it occurs near the beginning of the traditional school year for most students. Any person including those who live outside of the state of Missouri, who makes a qualified purchase may participate in the holiday. An individual does not have to be a student or be purchasing for a student to participate.

The cities in the area who are choosing to participate in the tax free holiday are Mound City, Craig, Fairfax, Tarkio, Oregon, Rock Port, Maryville and St. Joseph, MO.

For more information and a list of other cities, counties, and districts that have opted out of the holiday, anyone can access them at Missouri Back-to-School Sales Tax Holiday 2013.

This Week's History

From the *Mound City News* archives

50 Years Ago - 1963

- The little league season was over. The Little Leaguers talked their dads into playing a game as their final opponents. The starting lineup for the well organized dads' team was announced. It was as follows: Earl Embrey, catcher; Dr. J. Bruce McRae, pitcher; Gerald Paterson, first base; Buster Johns, second base; Charles Page, third base; W.R. Moody, shortstop; Wm. Griffith, left field; James R. Schoonover, center field; and Melvin Karsten, right field. Those in reserve were: Carson McCormack, LeRoyce Derr, Eldon Davis, Dr. Hugh Wallace, Pird Ashford, and several others. Russell McKee was the coach.

- Mound City was a member of the Interstate Swimming Association and participated in swim meets throughout the summer. The other towns who belonged to the organization were: Rock Port and Maryville, Mo.; Hamburg, Ia.; and Auburn, Nebr.

- The Mound City Board of Education was advertising for bids to construct the new addition, which was to be made a part of the main school facility. The new cafeteria-lunch room and music area was approved by voters at a special election several months ago.

- The 12th annual Oregon Horse Show was to be held at the Riding Club grounds, two blocks north of the city square. There were 10 events scheduled for each evening of the Friday and Saturday night show.

25 Years Ago - 1988

- The Holt County 4-H Horse Show was held at the Squaw Creek Livestock Arena. A total of 24 4-H members participated from Oregon, Forest City, Mound City, Craig, Maryville, Ravenwood, Grant City, and Fairfax.

- The Holt County branch of the Sunshine Generation Children's Performing Group had a busy summer. Members performed in a benefit concert for the American Cancer Society, performed on the Spirit of St. Joseph Riverboat, and they performed at the July 4th festivities in Mound City.

- Another decorative Red Rock report was made by the Knights of the Round Table. WANTED: Agent to represent the Knights of the Round Table for acquisition and distribution of Red Rocks. Salary negotiable - hard rock benefits.

- Members of the Cosmopolitan Club and their guests attended the Mule Barn Theater in Tarkio to see the production "Ain't Misbehavin'".

- Kathryn White entertained the Lake Shore Club for brunch.

- Mr. and Mrs. Si Allen celebrated their 50th anniversary with a reception hosted by the couple's children and grandchildren.

10 Years Ago - 2003

- All kinds of fun was had at the Craig Reunion. Some of the lucky contest winners included Pam Kent, winner of the goat-kissing contest; Spencer Gibson won the frog jumping contest; Kelly Dougherty won 1st place in the pet category in the Saturday Parade; and Jake Dougherty won 1st for his costume in the parade. The parade grand prize winner was the Larry and Maria Wright family. Little Mr. and Miss Craig Reunion was Garrett Hinrichs and Kelly Dougherty.

- Abie Showalter, Craig, celebrated 50 years as an auctioneer. An appreciation celebration was held at the Tarkio Community Building.

- Skip Laukemper planned to close 505 Trading Co. on Labor Day and sell the contents at an auction in October. She sold the limousine business to John and Debbie Sportsman. Skip opened 505 Trading Co. and Shooter's in 1998 and began the limo service, Shooter's Scooter, early in 2001.

- Lisa and Travis Stiens, Skidmore, participated in the press and powerlifting events at the Show-Me State Games in Columbia, MO.

- Catherine Metzgar, Mound City, attended a Student Leadership Conference at Indianapolis, Ind. Catherine was one of seven Missouri delegates.

Falls City Jaycees' 31st Annual Demolition Derby

On Saturday, August 3, starting at 7 p.m., the Falls City, NE, Area Jaycees will host its annual Demolition Derby on the Falls City Jaycees' Community Field, two miles south of town on the Highway 73 and 703 Loop, in Falls City. Registration will be from 3 p.m. to 6 p.m. Drivers must be 18 years and older. A concession stand and beer garden will be available on the grounds.

Admission for the event includes: 10 years and older, \$10; children 5 to 9 years old, \$5; and 4 years and younger are free. A total of four classes will be awarded prizes for this event. The

four classes are as follows: Compact Class, Hobo Class, 80's and Newer and Old Iron Combine.

For more information, please contact Shawn Fouraker at 402-245-1977, David Goff at 402-883-7639 or Nick Fischer at 402-245-0219.

33rd Annual Gene Kent & Melvin Livengood Memorial FISHING DERBY
AUGUST 10th - 11th
Thurnau Wildlife Area
West of Craig, MO, on Highway III
To enter or for more information:
Doug Livengood, Craig, MO 64437 - 660-562-7787

Trojanettes' Softball tryouts

The Trojanettes' Softball 10 and Under Team will be having tryouts Sunday, August 4, at the field in Conception, MO, at 1:30 p.m. For more information, contact David Carroll at 816-390-6059.

LAND AUCTION
PAGE Co. IOWA & ATCHISON Co. MO
Saturday, September 14, 2013. 10 AM
Auction Site: Community Building, Northboro Iowa
250 +/- Acres To Be Auctioned In 2 Tracts

<p>160 +/- ACRES ROW CROP 3115 F Ave, Northboro, IA 51647</p> <ul style="list-style-type: none"> • VADA L. GIBSON LAND AUCTION • 160 +/- TOTAL ACRES • 157 +/- FSA TILLABLE ACRES • PAGE COUNTY, IA, LAND AUCTION • AVAILABLE TO FARM FOR 2014 • WEIGHTED AVERAGE CSR 67 • BLACKTOP AND GRAVEL FRONTAGE • TERRACE AND TILE 	<p>90 +/- AC PAGE CO, IOWA & ATCHISON CO 320th St, Blanchard, IA 51630</p> <ul style="list-style-type: none"> • ATCHISON COUNTY, MO, ROW CROP • PAGE COUNTY, IA, ROW CROP • AUCTION SAT, SEP 14, 10 AM • BOTTOM AND SECOND BOTTOM • HILL LAND ROW CROP • HIGHLY TILLABLE • AVAILABLE FOR 2014 CROP YEAR
--	--

FOR ADDITIONAL INFORMATION VISIT OUR WEBSITE
www.ucstjoeauctions.com
Dan McChristy, Auctioneer, SFR, Broker
 816.232.7160
 1801 N. Woodbine Rd., St. Joseph, Mo 64506
 Licensed in Missouri, Iowa, & Kansas

What do you remember?

The Holt County Historical Society is looking for answers to these questions that have been submitted by researchers.



ON THE WAY TO THE OPENING OF THE CHEROKEE STRIP

This old faded photo was sent to the society by Marlene McKim of Falls City, NE. It was found in the Lillian "Bid" Lease items in Fortescue, MO. A handwritten note on the back tells it was taken in Arkansas City, AR, on the way to the opening of the Cherokee Strip. The handwritten date and names are difficult to read, believed to say September 12, 1873 or 1893. Checking the names in *Gone Home I*, the date 1893 might be correct. Any information about the trip would be appreciated! Many researchers have been excited to find the names of ancestors and relatives in the photo.

Left to Right: Abner Boyd, 71 years old; Wade Billips, on the horse; E.E. Boyd standing; Franklee Green, on the mule; Charles Williams, standing; Abe Harris, on wagon; Eli Conn? (hard to read); Lum Lease; John Adams, in front of the wagon; Albert Adams, extreme right. Not pictured, but in the party: John Mullins, Jim Mullins, Wade Whitney, Silas Combs, Frank Combs, Tom Stuart and Henry Hines.

If anyone has any information about any of these items please call 660-442-5949.

"Heritage of the past to the present generation and to preserve for the future"
 We are open 9 a.m.-3 p.m. on Wednesdays at 612 State Street in Mound City

The Holt County Historical Society

612 STATE STREET • PO Box 55 • Mound City, MO 64470
 Also, answers may be e-mailed to the society at holtcountyhs@yahoo.com

2013 Nodaway-Holt Elementary supply list

Upgrade or recycle your refrigerator and receive benefits from KCP&L

Back-to-school is just around the corner, but there's still time for summer get-togethers with family and friends. For party hosts looking to make sure their stocked garage refrigerators aren't wasting money, KCP&L's new Home Appliance Rebates offer a way to recycle, upgrade and receive money back.

An inefficient refrigerator uses twice as much electricity as a new, efficient model. If the fridge is older, made before 1993, it could cost more than \$100 per year to run. Garages and basements across the region are often home to secondary, inefficient refrigerators like this that can be recycled with help from KCP&L.

KCP&L helps customers lower their energy use with several new rebates. For the Home Appliance Recycling Rebate, KCP&L will pick up qualified, old appliances, beginning with a secondary refrigerator, at eligible customers' homes. A \$75 rebate is then sent. Customers benefit with lower energy bills and a rebate, while the environment benefits from the proper recycling of old appliances.

Refrigerators are just one type of eligible appliance. Customers may be eligible to recycle two additional appliances, including another refrigerator or freezer, as well as room air condi-

tioners and dehumidifiers. All appliances must be in working order and must be owned by the customer and picked up at the address on the residential KCP&L account.

Recycling pick-ups can be scheduled at 1-855-612-4098. Representatives are available Monday - Friday, 8 a.m. to 5 p.m.

KCP&L customers also may be eligible to receive rebates on the purchase of a new energy-efficient refrigerator or other major appliance with KCP&L's Home Appliance Rebate. In addition to a more efficient appliance that uses less electricity, customers will benefit from KCP&L's mail-in rebates.

- \$100 for a new ENERGY STAR certified refrigerator
- \$100 for a new ENERGY STAR certified freezer
- \$35 for any new programmable thermostat
- \$25 for a new ENERGY STAR certified room air conditioner

KCP&L's Home Appliance Rebates are available today to customers in the Greater Missouri Operations service area. Customers should visit www.kcpl.com/rebate to see if they are eligible.

For more information about these and other energy efficiency programs, please visit www.kcpl.com/ programs.

- Kindergarten**
- 3 to 4 glue sticks
 - Colored pencils
 - 2 boxes of 8 crayons (regular size, NOT large)
 - 8 sharpened Ticonderoga pencils
 - 1 pkg. of erasers for the end of pencils
 - 1 box of markers (optional)
 - 2 folders with pockets*
 - Fiskars scissors*
 - Small box for supplies*
 - 70-page wide rule notebook*

- Girls: Large container of disinfecting wipes
- Boys: Large container of hand sanitizer
- 1 pair of Velcro or slip on gym shoes (to be left at school for gym class)*
- Complete change of clothes (in a bag to be left at school)*
- Small pillow*

- Girls: 1 large box of Kleenex
- Boys: Shelf snack- 1 box or bag of healthy snack (cereal, crackers, etc.)

Please label all supplies that have an *asterisk* next to them.

- First Grade**
- 2 boxes crayons
 - 16 #2 pencils (Dixon or Ticonderoga work best)
 - 2 large erasers
 - 1 box colored pencils
 - 4 fine tip dry erase markers
 - 1 white board eraser
 - 1 box washable magic markers
 - 2 glue sticks
 - 2 wide line spiral notebooks
 - 1 pocket folder
 - Pencil box
 - Healthy shelf snack for 12 students
 - 1 box of Kleenex or 1 pkg. baby wipes

- 1 container disinfecting wipes or 1 bottle of hand sanitizer
- Girls: Small paper plates or 1 pkg. note cards
- Boys: Zip top bags (sandwich or gallon) or 1 roll of paper towels
- Gym shoes (to be left at school)

- Second Grade**
- 1 wide line spiral notebook
 - 1 small box crayons
 - 12 #2 pencils
 - 1 large eraser
 - 1 pair scissors
 - 1 Elmer's white glue
 - 1 glue stick
 - 4 pocket folders
 - 1 large box Kleenex
 - 1 pair of gym shoes (to be left at school)
 - 2 dry erase markers
 - 1 small school box
 - NO MAGIC MARKERS
 - 1 ruler with standard and metric units
 - 1 red checking pen
 - 1 container Clorox wipes
 - 1 pkg. index cards ruled 3"x5"

- Third Grade**
- 2 pkgs. wide ruled loose-leaf paper
 - 4 dry erase markers
 - 24 yellow #2 pencils (Dixon or Ticonderoga)
 - 1 large eraser
 - 2 red checking pens
 - 1 pair scissors (pointed end)
 - 1 small bottle of glue or glue stick
 - 1 small box crayons
 - 1 small box of colored pencils
 - 1 ruler with standard and metric units (please no bendy rulers or rulers that fold)
 - 3 inexpensive pocket folders

- 4 one subject spiral wide ruled notebooks
- 1 highlighter
- 3 pkgs. of ruled 3"x5" cards
- 2 boxes of Kleenex
- 1 pair gym shoes (to be left at school)
- Boys: 1 container of Clorox wipes
- Girls: 1 roll of paper towels

- Fourth Grade**
- 1 box colored pencils
 - 2 pink erasers
 - 1 pair scissors
 - 1 glue stick
 - 1 yellow highlighter
 - 36 #2 wooden sharpening pencils (NO automatic or clicking pencils)
 - 1 black Expo dry erase marker
 - 2 pkgs. 3"x5" lined index cards
 - 4 wide ruled spiral notebooks (different colors)
 - 1 one inch black or white binder
 - 1 blue one inch binder
 - 3 plain colored pocket folders
 - 1 pkg. of wide ruled loose leaf paper
 - 1 pkg. of 8 tab dividers
 - 1 ruler with standard and metric units (the ruler from last year will be great)
 - 1 pair of gym shoes (to be left at school)
 - 2 boxes of Kleenex
 - Boys: Clorox wipes
 - Girls: 1 small box of baggies
 - \$3 for a planner (to be paid on Back to School Night)

- Fifth Grade**
- 1 Trapper Keeper (or smaller organizer) that will hold loose leaf paper and folders
 - 1 small package loose leaf paper*
 - 1 ruler with metric and standard units

- 8 dividers with tabs for science
- 3-4 folders with holes to put in Trapper Keeper
- 10 #2 wooden sharpening pencils (no automatic or clicking pencils)
- 2-3 non-clicking checking pens in blue or red
- 1 glue stick
- Scissors
- Small box of crayons
- Markers or colored pencils
- 1 package index cards with lines
- 2 big boxes Kleenex
- 1 pair of gym shoes (to be left at school)
- 2-3 highlighters (different colors, please)
- 1 bottle of hand sanitizer
- 1 blank CD-RW
- (*all paper should be wide-ruled)

- Sixth Grade**
- 1 box colored pencils
 - Markers (washable)
 - Pens (various colors)
 - 1 pair scissors
 - Several glue sticks
 - 2 rulers (standard and metric units)
 - 2 boxes Kleenex
 - 2 pkgs. #2 pencils
 - 1 protractor
 - 1 inch and centimeter safety compass
 - 2 pkgs. loose-leaf notebook paper
 - 4 spiral notebooks (1 for math, 1 for spelling, 1 for science, 1 for social studies)
 - 1 graph notebook, 4x4 Quadrille ruled
 - 7 pocket folders (2 with 3 rings for paper)
 - 1 pkg. of 3"x5" lined index cards
 - Gym shoes (to be left at school)
 - 1 roll of paper towels
 - 1 container of disinfecting wipes

WALK-IN CLINIC

**Same Convenient Hours
Same Great Providers**

**New Location
Beginning July 29**

Monday-Thursday
12 to 6:30 PM
Friday 12 to 4:30 PM

**NO APPOINTMENT
NECESSARY!**
Call (660) 562-2525
for more information



NEW LOCATION
at St. Francis Family Health Care
- 2016 South Main, Maryville -
WEST ENTRANCE OF SOUTH WING



**St. Francis
Family Health Care**
www.stfrancismaryville.com

Crops and notes: Check herbicide labels before planting cover crops

There is an increase in the interest in planting cover crops. If an individual examines the herbicide label, that person will find crop rotation restrictions for various crops. The label will state restrictions when rotating to alfalfa and clover and also to small grains. The label is a good place to start in determining if there is potential injury to a following cover crop applied to a cash crop.

The influence of the herbicide carryover depends on how long the herbicide will stay in the soil. Most all herbicides are degraded

by microbial breakdown and some may be chemically degraded. Secondly, cover crops have different sensitivity to different herbicides. Some species can be easily killed whereas others can handle the dosage.

The herbicide program with the cover crop demonstration at the Graves-Chapple Research Center, near Corning, MO, has been changed using short residual over-lapping herbicides and also post-emergence herbicides with limited residual activity. An herbicide program last year injured several species of

cover crops last fall so the adjustment was made. Also, last year was extremely dry so more risk is apparent as herbicides did not degrade as quickly.

Plan to check herbicide labels when seeding cover crops in late summer and early fall. The lack of stand may result from herbicides rather than rainfall.

For more information, contact Wayne Flanary at 660-446-3724, Heather Benedict at 660-425-6434 or Wyatt Miller at 816-776-6961, Regional Agronomists, University of Missouri Extension.

FALLS CITY AREA JAYCEES

23rd Annual
TRUCK & TRACTOR PULL
RED ROCK SLED

**FRIDAY
AUG. 2**
Starting at 6:00 P.M.

FARM TRACTORS & TRUCKS
Drivers' Meeting at 5:45 p.m.
Added Prize Money CLASSES

Farm stock	11500 pro farm
10500# 3LM 466 turbo	11500 hot farm
Non turbo	8000# 2.6 turbo diesel P.U.
9500 pro farm	6300 4wd P.U.
2WD mod. gas P.U.	13500 pro farm
10500 hot farm	13500 hot farm
10500 pro farm	Open diesel P.U.
5800 4wd P.U.	

\$20 Entry Fee per Class
PRIZES WILL BE AWARDED
Registration: 5:00-7:30 p.m.
Beer Garden on Grounds.
NO COOLERS

Rules at website: fcjaycees.org

For More Information, Call:
CORY SNETHEN 402-245-7486
TIM BAILEY 402-883-8374
CHRIS FISCHER 785-288-1606

ADMISSION: 10 YEARS & OLDER - \$10.00 • CHILDREN 5 TO 9 - \$5.00 • 4 & UNDER FREE
The Falls City Area Jaycees Will Not Be Held Responsible For Accidents.

St. Francis Eye Clinic
Sudarsan Chavala, M.D.



Eye exam for glasses & contacts
Cataract and implant surgery • Laser Surgery
Optical stores attached

<p>Maryville Office 2024 S. Main Maryville, MO (660) 562-2566</p>	<p>Toll Free 1-800-326-1399</p>	<p>Bethany Office 1303 N. 25th Bethany, MO (660) 425-2317</p>
---	---	---

Welcomes All Eye Care Plans • Accepts Medicaid • Medicare Participating Physician

Subscribe Now!

In-area - \$30/year
(Holt, Nodaway, Atchison, and Andrew Counties)

\$35/year (Everywhere else)

Mound City NEWS

511 State St., Mound City, MO
660-442-5423



Dr. Erica Gillette- Brings the medical home concept to the clinic at Community Hospital-Fairfax, MO. She describes a medical home as primary care that meets patients where they are and involves a patient-centered, comprehensive and coordinated system of care.

Erica Gillette, M.D., brings medical home concept to clinic in Fairfax

Erica Gillette, M.D., arrived in Missouri last November with a moving van; her husband, Jason; three children, Ava, Landon and Mariah; and a vision for her practice at Community Hospital-Fairfax (CH-F). Her goal was simple. Her clinic would become her patients' medical home.

Dr. Gillette describes a medical home as being more than just a clinic. It is a philosophy of primary care that meets patients where they are and involves a patient-centered, comprehensive and coordinated system of care. Included in the medical home concept is a robust electronic health record. Dr. Gillette's clinic went live with One Chart, an electronic medical record by Epic, in March of 2013.

"My goal is to keep my patients well. I accomplish this by understanding everything I can about their health and who they are as

a whole," comments Dr. Gillette.

Part of Dr. Gillette's effort to keep her patients on the straight and narrow includes a strict adherence to scheduled well-child check-ups, a focus on preventative care and a comprehensive first visit (Dr. Gillette schedules 45 minutes for each of her new patients.) Follow up visits and a staff committed to the medical home concept also play an important role.

Dr. Gillette is excited about her patients' response to her ideas, "My patients tease me for being thorough, but they also know that I am truly concerned about their whole health. My goal is that each and every patient lives a long, healthy and high quality life."

Dr. Gillette sees patients at the CH-F Primary Care Clinic inside Community Hospital-Fairfax at (660) 686-2276.

MDC hosts successful fishing clinic for youth

Last Saturday, July 27, the Missouri Department of Conservation hosted a youth river fishing clinic along the Missouri River near Thurnau Conservation Area near Craig, MO. Conservation Agents Jade Wright and Anthony Maupin organized the event that allowed 24 youth to gain some Big River fishing experience. The clinic ran from 6 a.m. to noon, which began with safety instructions and pairing of youth with their guides. By 6:30 a.m., the youth were off with their respective guides to fish for catfish. Some of the youth were able to assist or watch their guides check set lines or bank lines that were set the Friday evening before the event. For approximately three hours, youth were able to pole and line fish using live baits or secret mixtures of stink bait provided by their guides.

By 10 a.m., students and guides had reassembled along a parallel dike for a set line demonstration and fish shocking demonstration conducted by department personnel. During this hour, Conservation Agents Jason Braunecker and Vince Crawford instructed the 24 youth with their guides and chaperones on how to use alternative methods to catch catfish. Students learned the basic of set line location, differences between set lines and safety while setting lines. The second half of the hour, Fisheries Biologists demonstrated how they use shocking equipment to sample fish from the river. This sampling method allows biologists to safely and effectively retrieve fish from the water, record data from fish measurements and return the fish back to the water. Fisheries Management Biologist, Tory Mason, then spoke to the group about river management, fish identification and why these are such great resources.

At 11 a.m., everyone returned to the Thurnau boat ramp for a fish fry supplied by the morning catch. Students were able to show off their catch and share fishing stories. Also, during lunch, a catfish, a common carp and a gar were cleaned and processed to show the stu-

dents how to efficiently clean and make the most of their catch. Throughout the day, several youth caught their first fish from the river while other youth learned that not every trip to the river is a successful trip. When asked about their day on the river, one youth stated, "We didn't catch anything today, but this was the first I've ever been on the river and I really had fun."

Holt County Agents Wright and Maupin are very grateful for the assistance from local guides who provided their boats, fishing equipment and secret fishing spots for the benefit of youth fishing. Finally, everyone was grateful for the goldfish and night crawlers donated by Killin and Morris Bait in Bigelow, MO.



Big River Fishing Clinic

Kody Browning (left), Emilie Browning (center), both of Craig, MO- With Conservation Agent Jason Braunecker (right) and Conservation Agent Vince Crawford caught these fish during the Big River Fishing Clinic on Saturday, July 27, 2013, on the Missouri River near Craig, MO. These three fish were on the first three hooks on their jug lines. Kody is holding a flathead catfish, Emilie is holding a channel catfish, and Jason is holding a blue catfish. Kody and Emilie ended up boating 3 flathead catfish, 3 channel catfish, and 2 blue catfish. Twenty-one adults and 24 kids participated in the event. Youth learned about catfishing techniques, river navigation, equipment needs for river fishing, river safety, and fisheries' management.

Did You Know?

CH-F Laboratory Services Isn't Just For Inpatients

FYI

The CH-F Lab Staff is specially trained in infant/child lab work

Patients: Did you know that CH-F is happy to provide lab work ordered by any physician or specialist? Even if your procedure is at another facility, you can do your lab draws close to home! For more information, call 660-686-2211

Outpatient Services Also Include:

- DOT Drug Screenings
- Whole Cholesterol Panels
- Draws to monitor blood thinner medications

Lab Hours:

Mon.-Fri., 8:30 a.m.-5:00 p.m.
Sat., 8:30 a.m.-12:00 p.m.
Or call for appointment:
660-686-2211

Community Hospital Fairfax
26136 US Hwy. 59
Fairfax, MO 64446

BACK-TO-SCHOOL SALES TAX HOLIDAY

WHAT YOU SEE IS WHAT YOU PAY

SHOP IN MARYVILLE & NODAWAY COUNTY

AUGUST 2-4

PAY NO STATE, COUNTY, OR CITY SALES TAXES ON CLOTHES | PRINTERS | PENS | COMPUTERS | SOFTWARE BOOK BAGS | PAPER | ART SUPPLIES | FOR MORE INFORMATION <http://dor.mo.gov/tax/business/sales/taxholiday/school/faq.htm>

GREATER MARYVILLE CHAMBER OF COMMERCE NODAWAY COUNTY ECONOMIC DEVELOPMENT



Free ticket with test drive.

Ram Rodeo Sale Days for Sidney, IA

90th PRCA Rodeo - July 30 through August 3

Tuesday, Wednesday & Thursday Performances

NEW 2013 RAM 1500 4x4, In-Stock.....\$27,995
24 MPG TRUCK

Test drive the new V-6, 8 Speed, Auto Pickup with 300 HP and 25 MPG rating and 8,500 lb. towing.

Great selection of Silverados with Summer Closeout Deals!

Employee Discounts ~ Pkg. Discounts ~ Rebates ~ Trade-In Bonus
~ Bonus Bucks ~ Supplier Incentives ~ Two Yrs. Free Maintenance

Check out these *Best Buys* In NW Missouri

2012 Chevy Impala, 4-Door, Low Miles, V-6.....\$14,695	2013 Captiva, FWD, Full Power, 4 Cyl., 11,000 Miles.....\$21,995
2013 Silverado, Crew Cab, 4x4.....SPECIAL \$26,995	2012 Dodge Avenger, 4-Door.....\$15,695
2013 Dodge Dart Rallye, Navigation, XM Radio, 4,000 Miles.....\$18,995	2012 Grand Caravan, 7 Passenger, Stow-N-Go.....\$19,995
2012 Chrysler 200, Red, 30,000 Miles...SPECIAL \$13,995	2012 Suburban, 8 Passenger, 4x4, Black Leather...\$37,995
2013 Ram 1500 Quad Cab.....\$27,995	2011 Dodge Charger.....\$18,995
	2012 Sonic, Hatchback.....\$14,595

CLEARANCE ON OVERAGE UNITS

2006 GMC Denali, 4x4 - \$19,995	2006 Polaris 800 ATV - \$4,995 w/ Winch	2009 Sonata - \$8,995
2010 Avalanche, 4x4 - \$29,995	2006 Chrysler Pacifica - \$8,995	2008 Impala - \$8,995
2004 Ram 1500, Quad Cab - \$12,995	2012 Traverse, AWD, Leather - \$28,995	2007 Uplander Minivan - \$8,995

Over 100 Pre-Owned In Stock

www.laukempermotors.com



CHRYSLER - DODGE - JEEP - RAM
I-29 & Hwy. 59 - Mound City, MO
660-442-5438
800-490-8035

CHEVROLET
3rd & Nebraska - Mound City, MO
660-442-9942
800-381-9942

Mound City License Bureau • 302 Nebraska St. • Mound City, MO • 660-442-5531

ATTENTION

Rogers Pharmacy
can provide medical equipment for all your needs, including oxygen, CPAP, wheelchairs, hospital beds, etc.



Rogers Pharmacy
Home Medical Equipment

Call 660-736-5512 or 660-442-3355

Tarkio • Mound City • St. Joseph • Maryville

www.rogersrx.com



August is National Immunization Awareness Month

Vaccines (shots) help prevent dangerous and sometimes deadly diseases. National Immunization Awareness Month is the perfect time to promote vaccines and remind family, friends, and coworkers to get caught up on their shots.

How can National Immunization Awareness Month make a difference?

This month can be used to raise awareness about vaccines.

Here are just a few ideas:

- Talk to friends and fam-

ily members about how vaccines aren't just for kids.

People of all ages can get shots to protect them from serious diseases.

- Encourage people in the community to get the flu shot every year.

- Invite a doctor or nurse to speak to parents about why it's important for all kids to get their shots.

A great example would be to host a community event where families can get together and learn about immunizations.



Mound City football players- Participated in a weeklong football camp from Monday, July 22, to Friday, July 26. They are shown doing drills on Tuesday evening, July 23, at Ceglenski Field in Mound City, MO. The Panthers' high school head coach is Brian Messer and his assistants are Cale Lyons and Jason Tenney.

Area school football camps help players with fundamentals

With school starting soon, area schools have started football camps for junior high and high school athletes. Mound City and Craig had a weeklong camp in the evenings. South Holt and Nodaway-Holt had a three-day camp. South Holt chose to do evenings hours and Nodaway-Holt opted for mornings. During camp, players worked on fundamentals, conditioning and plays for offense and defense.

The Mound City Panthers' high school coaching staff this year is head coach, Brian Messer, and assistant coaches, Jason Tenney and Cale Lyons. The Nodaway-Holt Trojans' high school head coach is Josh Petersen who is being assisted by Kevin Dodson. High school coaches for Craig/Fairfax (CFX) are head coach, Codie Swope, and assistant, Jim Murray. The high school head coach for the South Holt Knights is Mark Bolger and his assistant is John Casey.

The junior high coach for Mound City is Jason Tenney. The junior high South Holt Knights' head coach is Chad Brown who is be-

ing assisted by Chad Scheuerell. The Nodaway-Holt junior high Trojans' head coach is Clay James and his assistant is Kevin Dodson. The CFX athletes will be coached by Mike Hollingsworth.



Craig/Fairfax players- Practice kicking during their weeklong football camp on Tuesday evening, July 23, on Ferguson Field in Craig, MO. The camp participants were junior high and high school players from Craig and Fairfax, MO.

CRAIG COMMUNITY CALENDAR

(ITEMS MUST BE AT THE MOUND CITY NEWS BY NOON MONDAY)

August 8 - Craig City Council at Craig City Hall - 5:30 p.m.

August 10-11 - 33rd Annual Gene Kent and Melvin Livengood

Fishing Derby at Thurnau Wildlife Area West of Craig

August 19 - School starts at Craig R-3

August 20 - Craig Community Committee at American Legion Building - 6:30 p.m.

August 27 - Graves-Chapple Field Day near Corning, MO - 8 a.m.

See Us For All Your Banking Needs

- FREE Checking • FREE Internet Banking
- NOW Accounts • Savings Accounts • CD'S
- LOANS At Competitive Rates for Homes, Cars, Etc.



Citizens Bank & Trust

PO Box 70 PO Box 38
Rock Port, MO 64482 Craig, MO 64437
660-744-5333 660-683-5333

Member FDIC 904 State St.
Mound City, MO 64470 660-442-3800



KANSAS CITY CHIEFS' TRAINING CAMP SCHEDULE

The Kansas City Chiefs recently announced the dates for their 2013 Training Camp, presented by Mosaic Life Care at Missouri Western State University in St. Joseph, MO.

Training camp officially kicked off Friday, July 26, with a 3:30 p.m. practice and will conclude with the club's final practice on Wednesday, August 14, at 8:15 a.m. All practices are open to the public. If practices are indoors, due to inclement weather, Missouri Western will not be open to the public. After each practice session, groups of players will sign autographs. All outdoor practices will be free of charge with a \$5 parking fee per vehicle per day.

The Chiefs' "American Family" Fun Day will be held on Saturday, August 3. Admission is free and the entire team will sign autographs after practice.

Walkthrough practices are closed to the public and media.

2013 Training Camp Schedule:

- Friday, August 2 - Practice at 8:15 a.m.
- Saturday, August 3 - Practice at 8:15 a.m.; "American Family" Fun Day - Entire Team Autograph Session.
- Sunday, August 4 - Practice at 8:15 a.m.
- Monday, August 5 - Practice at 8:15 a.m.
- Tuesday, August 6 - Practice at 8:15 a.m.
- Wednesday, August 7 -

No Practice.

- Thursday, August 8 - Team Travel Day - No Practice.
- Friday, August 9 - Pre-season Game 1 - Chiefs at Saints at 7 p.m.
- Saturday, August 10 - No Practice.
- Sunday, August 11 - Practice at 8:15 a.m.
- Monday, August 12 - Practice at 8:15 a.m.
- Tuesday, August 13 - Practice at 8:15 a.m.
- Wednesday, August 14 - Practice at 8:15 a.m.
- Thursday, August 15 - Team Travel Day - No Practice - Camp in St. Joseph Breaks.
- Friday, August 16 - Pre-season Game 2 - Chiefs vs. 49ers at 7 p.m.



A NEW TEAM TO NORTHWEST MISSOURI



Pictured above, (left to right), Mel Tjeerdsma (Coach T.)-Part Owner; Chad Pedersen-Sales; Jesse LeMar-Sales; Bridget McMullan-Office Manager; Bill McCully-General Manager and Sales; and Rich Mendenhall-Part Owner.

These folks have joined together to form Championship Motors, LLC, in Maryville, MO, across the street from Walmart.

Mendenhall originally had expressed interest in purchasing Schreck Motors, LLC, as soon as he heard it was for sale. After visiting about the idea with longtime friend, Mel Tjeerdsma, Mel asked Rich if he was interested in a partnership. Given "Coach T's" winning record, Mendenhall didn't hesitate to welcome him aboard. Bill McCully was hired to manage the store with Chad Pedersen and Jesse LeMar to stay on in sales. Bridget McMullan was hired as office manager.

The new team has set an opening dated for August 1, 2013. A Grand Opening is scheduled for Saturday, August 17. Free food will be catered by the Bistro and there will also be prizes! Come meet the new team.

Championship Motors, LLC

660-582-8800

Maryville, MO (Across the street from Walmart)

GOODNEWS PROVIDER

Northwest Health Services and the Mound City Clinic welcome

Sherlyn Sipes, FNP

Come see Sherlyn for a check-up today.



NORTHWEST HEALTH SERVICES

www.nwhealth-services.org

MOUND CITY MEDICAL AND DENTAL CLINIC

1303 State St. Mound City, MO 64470

Medical: (660) 442-5464

Dental: (660) 442-5507



South Holt High School and Junior High players at camp

A South Holt high school athlete, right- Uses agility cones to test his speed during a three-day football camp at the South Holt school on Wednesday, July 24, in Oregon, MO. The Knights' first game is Friday, August 30, and they will be hosting the Nodaway-Holt Trojans.



This South Holt junior high football player- Raced in and out of the football dummies during South Holt's three-day football camp held at the South Holt R-1 school on Wednesday, July 24, in Oregon, MO.



Nodaway-Holt Trojans get ready for the upcoming 2013 football season

The Nodaway-Holt Trojans- Practice offensive and defensive plays on Tuesday morning, July 30, at the football field in Graham, MO, during their football camp. Josh Petersen will again be head coach for the Trojans and their first game will be played on Friday, August 30, at the South Holt Knights' field.



The Nodaway-Holt Trojan football players- Are down and ready, during a football camp on Tuesday, July 30, at the field in Graham, MO. The camp is a three-day camp that was supposed to start on Monday, July 29, but due to the rain on Monday, camp was not held.

Missouri Child Identification and Protection Program (MOCHIP)

The Missouri Masonic Children's Foundation and Oregon, MO, Lodge #139, Fairfax, MO, Lodge #483 and North Star Lodge #157 will be hosting the Missouri Child Identification and Protection Program (MOCHIP) on Saturday, August 24, at the Craig R-3 school in Craig, MO.



distinguishing features such as hair and eye color, scars and birthmarks

- Doctor, dentist, parental and emergency contact information

The CD is Amber Alert compatible. A dental impression is taken, which like a fingerprint, is unique to each individual. This impression also

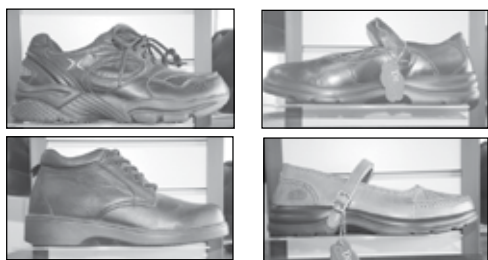
MOCHIP is a comprehensive child identification and protection program designed to provide families a proactive means of preparation should their child or teen become missing. The program is free of charge for ages newborn to 25. The items provided on a mini CD as well as two laminated ID cards include:

- Full-color digital, multi-posed photographs
- A complete set of a digital fingerprints
- Individual information including

supplies a DNA sample and a canine scent that tracking dogs use to help find lost children. No information other than the signed permission form is retained by MOCHIP or the Masonic Children's Foundation, further ensuring the security of a child's vital information. For more information or questions on this program, please feel free to contact David Lancey at 660-446-2644 or download the permission form ahead of time at www.mochip.org and click on "learn more" under the About MOCHIP heading.

Athletic Or Casual Diabetic Shoes

We offer Apex OR Dr. Comfort athletic or casual style shoes. The qualified diabetic patient is allowed one pair of diabetic shoes and three pairs of orthotic insoles per calendar year.



Diabetic Supplies

- Contour Strips
- Breeze 2
- One Touch



- Freestyle
- Accu-chek

Let us fit you with your next pair of shoes at Rogers Pharmacy Home Medical Equipment.



Rogers Pharmacy

Home Medical Equipment
Tarkio • Mound City • St. Joseph
www.rogersrx.com

607 State Street • Mound City, MO
660-442-3355 • Toll Free 800-962-0096

Family Medicine

Find a doctor close to home. Find the healthcare answers you need.

Primary Care Clinic gives you both.
Schedule an appointment today by calling
(660) 686-2276



26136 US Hwy 59,
Fairfax, Mo.
660-686-2276



Erica Gillette, M.D.

Community Calendar

brought to you by



Member FDIC

NODAWAY VALLEY BANK the right bank...

614 State Street • Mound City, MO • 660-442-3131

August 5 - Friends of the Library at Mound City Library - 5 p.m.

August 6 - Story Time at Mound City Library - 10:30 a.m.

August 7 - Men's and Women's Drug and Alcohol Program at Hwy. 159 & I-29, in Mound City - 7-8 p.m.

August 13 - Mound City Council Meeting at Mound City City Hall - 7:30 p.m.

August 19 - School starts at Mound City R-2

August 23 - Fall Sports' Kickoff Celebration at football field - 6:30 p.m.

Every Friday at the Mound City Nutrition Site
Doughnuts, Doughnut Holes, Cinnamon Rolls
8:30 a.m. until Sold Out

Take Off Pounds Sensibly (TOPS), non-profit, non-religious weight-loss support group, Mondays, 4:30 p.m.
Holy Trinity Lutheran Church, Mound City

Deadline for Calendar Items is Monday Evening

Lobby Hours: Monday-Thursday 9 a.m.-4 p.m.; Friday 9 a.m.-5 p.m.

Drive-In Window: Monday-Thursday 8 a.m.-5 p.m.; Friday 8 a.m.-5:30 p.m.; Saturday 8 a.m.-12 noon

CHECK OUT THESE OTHER CONVENIENT NVB LOCATIONS

MARYVILLE
660.562.3232
Third & Main Street*
1303 S Main*

SAVANNAH
816.324.3158
301 S US Hwy. 71*

ST. JOSEPH
816.364.5678
4001 N Belt Hwy. & Cook Road*
402 N Belt Hwy. & Faraon Street*
1302 S Riverside & Mitchell Ave.*
6304 King Hill Avenue*

*Drive-up ATMs

nvb.com

Holt County real estate transfers

Bruce B. Biermann and Leisa A. Biermann to the Biermann Living Trust, Mound City, MO; West Half of the Southeast fourth of Section 34, Township 62, Range 38, and Commencing at the Northwest corner of the East Half of the Southeast Quarter of Section 34, Township 62, Range 38, see record for full description.

Irene V. Milne Revocable Living Trust, by Successor Trustee, to Milne Third Party Supplemental Needs' Trust, Kansas City, MO; South Half of the Southwest Quarter of Section 5, Township 59, Range 37.

Leslie K. Law to Steven Hogle and Susan Hogle, La Vista, NE; All of Lot 10 in Tubb's Subdivision in the Village of Big Lake.

Leona Ficken to Leona Ficken, T.O.D.; Tract in Southeast Quarter of Section 32, Township 61, Range 39.

Donald R. Wennihan and Bridget Y. Wennihan to Donald R. Wennihan, T.O.D., and Bridget Y. Wennihan, T.O.D.; Tract in East Half of Southwest Quarter in Section 8, Township 62, Range 39.

George E. Wilson and Mary E. Wilson to Gerald E. Wilson, Carolyn J. Mackey, Jane E. Moyers, and Charles E. Wilson, Mound City; East Half of the Southeast Quarter Except 1 acre in Southeast Corner for Cemetery and South Half of the Southeast Quarter of the Northeast Quarter in Section 16, Township 62, Range 38; West Half of the Southwest Quarter and South Half of the Northwest Quarter of Section 27, Township 62, Range 38, all subject to Life Estate.

In Re: Survey for Jack Munyon to Jack Munyon; Lot 3 of Eiser Addition in Oregon, MO.

Notice of Tax Certificate Sale

The following is a publication of land in Holt County, Missouri, upon which a tax certificate is to be offered for sale at the Courthouse door, on Monday, August 26, 2013, at ten o'clock in the morning (10:00 a.m.), according to the provisions of Chapter 140: Revised Statutes of the State of Missouri 2008.

The land to be sold under the description as listed and the amount as shown due represents the total amount of taxes, interest, and costs, including the cost of the sale; and the certificate will be issued covering as much land as is necessary to discharge the total taxes, interest, and the charges as are due at the time of the sale.

The land to be offered is as follows:

Anderson, Michael Francis: Parcel No. 07-1-11-04-14-08.001, Lot 8, Blk. 9, Craig O.T. - 2009, \$103.76; 2010, \$106.43; 2011, \$61.43; 2012, \$52.58. Total including advertising cost: \$324.20

Burton, Bryce W.: Parcel No. 17-9-32-01-06-08.000, Lots 14,15,16, Blk. 38, Forest City O.T. - 2008, \$290.61; 2009, \$271.47; 2010, \$92.48; 2011, \$47.71; 2012, \$42.80. Total including advertising cost: \$745.07

CSM Ventures: Parcel No. 07-1-11-04-06-02.000, Lot 1, Blk. 2, Ensworth Addition, Craig - 2008, \$432.36; 2009, \$413.55; 2010, \$387.98; 2011, \$308.31; 2012, \$266.73. Total including advertising cost: \$1,808.93

Davis, Connie S.: Parcel No. 10-2-04-04-06-04.000, Lots 6,7,8, Blk. 4, Barnard Addition, Maitland - 2010, \$170.89; 2011, \$113.49; 2012, \$125.65. Total including advertising cost: \$410.43

Dunn, Roxann: Parcel No. 07-1-11-04-03-05.000, Lots 14-16, Blk. 2, Ward's Addition, Craig - 2010, \$599.81; 2011, \$494.15; 2012, \$427.54. Total including advertising cost: \$1,521.50

Flint, Ronnie & Janet: Parcel No. 13-9-32-04-05-03.000, Commencing 60' S & 560' E of SW Cor. Blk. 2, S 195', E 112', N 195', W 112', To POB, Fortescue - 2010, \$442.55; 2011, \$358.93; 2012, \$297.63. Total including advertising cost: \$1,099.11

Ford, Michele R., Attn: Godfirmon, Kathleen: Parcel No. 14-7-36-01-01-29.001, W 1/2, Lot 46, Ramsey's 2nd Add., Big Lake - 2010, \$121.54; 2011, \$75.38; 2012, \$66.67. Total including advertising cost: \$263.59

Fulkerson, Doyle & Julie: Parcel No. 14-6-13-04-01-08.000, Lots 3 & 4, Ideker Sub. #6, Big Lake - 2010, \$691.94; 2011, \$497.26; 2012, \$286.66. Total including advertising cost: \$1,475.86

Gilland, Ronald J. & Beverly A.: Parcel No. 07-1-11-00-00-01.000, E 313.5' of N 850' of NE 1/4 NE 1/4 exc. Hwy. R/W in 11-62-40 - 2010, \$874.26; 2011, \$708.83; 2012, \$2,322.10. Total including advertising cost: \$3,905.19

Gilland, Ronald J. & Beverly A.: Parcel No. 07-1-11-04-04-10.000, Lots 4 & 5, exc. S 10' Lot 5, Blk. 2, Craig, O.T. - 2010, \$321.21; 2011, \$255.22; 2012, \$220.79. Total including advertising cost: \$797.22

Gilland, Ronald J. & Beverly A.: Parcel No. 07-1-11-04-04-01.001, Comm. 80' SW of SW cor. Lot 5, Blk. 3, H.L. Ward's Add., Craig - 2010, \$32.86; 2011, \$2.31; 2012, \$6.29. Total including advertising cost: \$41.46

Godfirmon, Joseph: Parcel No. 14-7-36-01-01-30.000, Lots 47 & 48, Ramsey's 2nd Add., Big Lake - 2010, \$1,394.71; 2011, \$1,250.94; 2012, \$436.12. Total including advertising cost: \$3,081.77

Harvey, Karen Jo: Parcel No. 17-9-29-03-01-09.000, Lots 1, 2 & 3, Blk. 8, Forest City, O.T. - 2010, \$219.91; 2011, \$135.72; 2012, \$121.80. Total including advertising cost: \$477.43

Harvey, Karen Jo: Parcel No. 17-9-29-03-01-06.000, Lot 4, Blk. 3, Forest City, O.T. - 2010, \$43.96; 2011, \$11.74; 2012, \$10.73. Total including advertising cost: \$66.43

Herr, Jim & Loretta Covell: Parcel No. 12-3-06-02-10-09.000, Part NE 1/4 NW 1/4 Bgn. @ SE Cor. Blk. 9, Mound City O.T., SW Along N Line 6th St. 107.5', NW 79', NE 107.5', SE 79' to POB - 2008, \$216.73; 2009, \$200.06; 2010, \$190.75; 2011, \$130.04; 2012, \$19.19. Total including advertising cost: \$756.77

Hughes Chiropractic Health Care P.C.: Parcel No. 12-3-06-01-01-02.000, Part NE 1/4 NE 1/4 in 6-61-38 - 2010, \$305.87; 2011, \$227.32; 2012, \$204.86. Total including advertising cost: \$738.05

Hughes, Goldie M., Attn. James R. Rogers: Parcel No. 07-1-11-04-04-05.000, Lots 3-5, except SW 40', Blk. 3, Craig O.T. - 2010, \$71.52; 2011, \$36.24; 2012, \$31.28. Total including advertising cost: \$139.04

Justus, Dixie: Parcel No. 10-2-09-01-23-08.000, N 15' Lot 21 & all Lots 22-25, Blk. 8, Barnard's Add., Maitland - 2010, \$314.54; 2011, \$238.91; 2012, \$262.44. Total including advertising cost: \$815.89

Knapp, Gloria L.: Parcel No. 09-9-31-04-17-02.000, Lots 2 & 3, Blk. 40, Mound City, O.T. - 2010, \$494.39; 2011, \$384.39; 2012, \$347.64. Total including advertising cost: \$1,226.42

Lewis, Harold R. & Pamela J.: Parcel No. 09-9-31-03-22-05.000, Lot 12, Blk. 17, Mound City, O.T. - 2010, \$226.34; 2011, \$160.00; 2012, \$22.25. Total including advertising cost: \$408.59

Lundblade, John R. & Pam D., Attn: Grist, Brandon: Parcel No. 07-5-22-00-00-01.002, 2.35 A Tract in NW 1/4 NW 1/4 NW 1/4 NE 1/4 in 22-62-40 - 2010, \$526.02; 2011, \$425.34; 2012, \$1,108.97. Total including advertising cost: \$2,060.33

Lundblade, John R. & Pam D., Attn: Grist, Brandon: Parcel No. 07-1-11-04-06-07.000, Lot 16, Blk. 2, Ensworth Add., Craig - 2010, \$346.32; 2011, \$299.44; 2012, \$258.69. Total including advertising cost: \$904.45

Lundblade, Scott R. & Sufonda R.: Parcel No. 07-1-11-04-04-09.001, Lots 11-13, Blk. 2, Craig, O.T. - 2009, \$521.09; 2010, \$485.60; 2011, \$393.94; 2012, \$340.26. Total including advertising cost: \$1,740.89

Martin, Jonathan: Parcel No. 12-3-06-02-04-09.000, Part NE 1/4 NW 1/4, Bgn. @ SE cor. Blk. 32, Mound City, O.T. - 2010, \$135.04; 2011, \$83.10; 2012, \$74.74. Total including advertising cost: \$292.88

Martin, Leland L. & Candi: Parcel No. 09-9-31-00-00-08.000, 3.60 tract E 1/2 SE 1/4 NE 1/4 NE 1/4 in 31-62-38 - 2010, \$1,092.20; 2011, \$857.06; 2012, \$774.77. Total including advertising cost: \$2,724.03

Neemann, Donald A. & Rebecca L.: Parcel No. 07-1-12-03-04-03.000, Lot 5, Blk. 2, Gaskill & Cannon's Add., Craig - 2010, \$378.45; 2011, \$299.99; 2012, \$259.84. Total including advertising cost: \$938.28

Nowling, David Duane & Mary Ellen: Parcel No. 07-1-02-00-00-10.000, 20.2 A. tract beginning @ NE cor. SE 1/4 in 2-62-40 - 2010, \$420.12; 2011, \$332.60; 2012, \$291.72. Total including advertising cost: \$1,044.44

Nowling, David Duane & Mary Ellen: Parcel No. 12-3-06-02-09-02.000, Lot 2 & N 13' Lot 3, Blk. 4, Mound City O.T. - 2010, \$800.58; 2011, \$647.95; 2012, \$583.06. Total including advertising cost: \$2,031.59

Parker, John M., Attn: Nova Parker: Parcel No. 20-6-24-00-00-07.000, 6.7 A. in W 1/2, SW 1/4, SE 1/4 in 24-59-38, lying N of RR R/W, Exc. Co. Rd. R/W 2010, \$186.23; 2011, \$126.90; 2012, \$114.32. Total including advertising cost: \$427.45

Rich, Mark: Parcel No. 20-1-12-00-0-05.001, 65.31 A. tract SW 1/4 NE 1/4 & NW 1/4 SE 1/4, N. of Co. Rd. in 12-59-38 - 2010, \$973.89; 2011, \$796.91; 2012, \$718.83. Total including advertising cost: \$2,489.63

Robinson, Stacey & Eric, Attn: Gillenwater, Stacey: Parcel No. 09-31-02-07-01.000, Lots 1 & 2, Blk. F Valley View Add., Mound City Inc. N 1/2 of alley S of said lots - 2010, \$82.46; 2011, \$38.82; 2012, \$35.05. Total including advertising cost: \$156.33

Rogers, James Ray: Parcel No. 07-1-11-04-04-15.000, Lots 13 & 14, Blk. 3, Ward Addition, Craig - 2010, \$389.32; 2011, \$309.52; 2012, \$267.90. Total including advertising cost: \$966.74

Seals, James & Oralia: Parcel No. 13-9-30-01-02-01.001, Lot 53, less 6 1/2', Dopps Sub., Big Lake & N of & adj. to Lot 53. Also tract in equal width lying W of & adj. to the above described tract to the water edge & exc. tract deeded in Book 360, Page 96 - 2010, \$732.15; 2011, \$428.83; 2012, \$389.91. Total including advertising cost: \$1,550.89

Stansbury, James; Stansbury, Kenneth; Davis, Daniel; Gillenwater, Patricia; & Hoffman, Diana: Parcel No. 17-7-26-03-01-03.000, 1.50 A. tract in O'Fallon View Add. bgn. @ SW cor. Lot 54, N 335', W 15', N 245', to center of vacated st., NE 33' +/- to S line Spruce St., E 108', S 603', W 120' to POB incl. Lots 46-54, O'Fallon View Add., Oregon - 2010, \$608.36; 2011, \$489.08; 2012, \$440.28. Total including advertising cost: \$1,537.72

Stevens, Glenn & Miller, Connie: Parcel No. 14-7-36-01-01-02.000, Tract in NE 1/4 NE 1/4, bgn. 50' NE of NE cor. Lot 1, Ramsey's Add., Big Lake - 2010, \$614.48; 2011, \$405.13; 2012, \$158.89. Total including advertising cost: \$1,178.50

Stoner, Mark A.: Parcel No. 13-4-18-00-00-02.001, E 31.5' Lots 16 & 17 & all Lots 18-31, Mathews Manor Sub. in 18-61-39 - 2010, \$390.59; 2011, \$379.52; 2012, \$319.39. Total including advertising cost: \$1,089.50

Stoner, Mark : Parcel No. 09-9-31-04-02-07.000, Lots 7 & 8, Blk. 11, Mound City Ext. Co. Add. - 2010, \$141.04; 2011, \$93.40; 2012, \$84.50. Total including advertising cost: \$318.94

Twyman, Mary: Parcel No. 07-1-11-04-04-04.000, SW 40' Lots 4 & 5, Blk. 3, Craig O.T. - 2008, \$46.46; 2009, \$44.55; 2010, \$52.91; 2011, \$14.47; 2012, \$11.76. Total including advertising cost: \$170.15

Viets, Charles & Rebecca Lynn: Parcel No. 04-4-19-04-01-06.000, Tract in SW 1/4 SE 1/4 bgn. 60' E SE cor. Lot 12, Blk. 3, Martin's Add., Corning - 2010, \$67.27; 2011, \$20.91; 2012, \$17.94. Total including advertising cost: \$106.12

Viets, Charles & Rebecca Lynn: Parcel No. 04-4-19-04-05-05.000, Lots 10 & 11, Blk. 3, Martin's Add., Corning - 2010, \$52.20; 2011, \$20.48; 2012, \$17.65. Total including advertising cost: \$90.33

Viets, Charles & Rebecca Lynn: Parcel No. 04-4-19-04-05-06.000, Lot 12, Blk. 3, Martin's Add., Corning - 2010, \$44.81; 2011, \$13.28; 2012, \$11.39. Total including advertising cost: \$69.48

Warrington, Catherine R.: Parcel No. 07-1-11-04-14-10.000, Lots 11 & 12, Blk. 9, Craig O.T. - 2010, \$931.55; 2011, \$785.40; 2012, \$678.99. Total including advertising cost: \$2,395.94

I, Donna Cotton, Collector of the County of Holt, State of Missouri, do hereby certify that the foregoing is a true and correct list of the land that will be offered for sale as set forth above.

Donna Cotton, Collector
3/3tc

Holt County traffic violations

The following traffic violations that occurred in Holt County were paid through the Missouri Judiciary Fine Collection Center:

Marissa R. Andersen-Omaha, NE, Exceeded Posted Speed Limit (Exceeded By 20 - 25 Mph). Case filed on July 5, 2013. Case disposed on July 20, 2013. Fine Amount: \$155.50.

Tracey Ann Anderson-Shawnee, KS, Exceeded Posted Speed Limit (Exceeded By 16 - 19 Mph). Case filed on June 29, 2013. Case disposed on July 24, 2013. Fine Amount: \$80.50.

George Maynard Banzhaf-Meridian, MS, Exceeded Posted Speed Limit (Exceeded By 11 - 15 Mph). Case filed on June 21, 2013. Case disposed on July 18, 2013. Fine Amount: \$55.50.

Cole Jameson Durant-Flowood, MS, Exceeded Posted Speed Limit (Exceeded By 16 - 19 Mph). Case filed on June 26, 2013. Case disposed on July 20, 2013. Fine Amount: \$80.50.

Daniel John Glassman-Omaha, NE, Exceeded Posted Speed Limit (Exceeded By 11 - 15 Mph). Case filed on July 3, 2013. Case disposed on July 23, 2013. Fine Amount: \$55.50.

Ronald L. Graham-Mt. Hermon, LA, Exceeded Posted Speed Limit (Exceeded By 1 - 5 Mph). Case filed on June 25, 2013. Case disposed on July 22, 2013. Fine Amount: \$20.50.

Lavell Dandre Jackson-Olathe, KS, Driver/Front Seat Passenger Fail to Wear Properly Adjusted/Fastened Safety Belt. Case filed on June 16, 2013. Case disposed on July 20, 2013. Fine Amount: \$10.00.

Michael Allen Leigh-St. Joseph, MO, Failed to Properly Affix/Fasten To Or Maintain Motor Vehicle/Trailer Plates. Case filed on June 23, 2013. Case disposed on July 22, 2013. Fine Amount: \$30.50.

Karla Deonf Mayo-West Monroe, LA, Exceeded Posted Speed Limit (Exceeded By 11 - 15 Mph). Case filed on June 19, 2013. Case disposed on July 22, 2013. Fine Amount: \$90.50.

Breanna M. Michalak-Omaha, NE, Exceeded Posted Speed Limit (Exceeded By 11 - 15 Mph). Case filed on June 22, 2013. Case disposed on July 24, 2013. Fine Amount: \$55.50.

Suzanne Marie Milan-Haysville, KS, Ex-

ceeded Posted Speed Limit (Exceeded By 11 - 15 Mph). Case filed on June 28, 2013. Case disposed on July 23, 2013. Fine Amount: \$55.50.

Christian Edward Rexilius-Branson, MO, Exceeded Posted Speed Limit (Exceeded By 20 - 25 Mph). Case filed on May 20, 2013. Case disposed on July 22, 2013. Fine Amount: \$155.50.

Albert Leo Rinu-Nieola, IA, Pursuing/Taking/Killed/Possessed Or Disposed of Wildlife Illegally. Case filed on June 21, 2013. Case disposed on July 18, 2013. Fine Amount: \$124.50.

Jeffrey Scott Runion-Maryville, MO, Failure To Register Motor Vehicle. Case filed on June 25, 2013. Case disposed on July 18, 2013. Fine Amount: \$30.50.

Colton J. Strauch-Salem, NE, Driver/Front Seat Passenger Fail To Wear Properly Adjusted/Fastened Safety Belt. Case filed on July 13, 2013. Case disposed on July 23, 2013. Fine Amount: \$10.00.

Adrianna Blanche Stultz-Harrisonville, MO, Exceeded Posted Speed Limit (Exceeded By 16 - 19 Mph). Case filed on July 5, 2013. Case disposed on July 24, 2013. Fine Amount: \$80.50.

Ashley N. Syas-Bellevue, NE, Exceeded Posted Speed Limit (Exceeded By 11 - 15 Mph). Case filed on June 22, 2013. Case disposed on July 18, 2013. Fine Amount: \$55.50.

Lisa M. Uhl-Lenexa, KS, Cut In On Overtaken Vehicle. Case filed on July 3, 2013. Case disposed on July 23, 2013. Fine Amount: \$80.50.

Juan Vega-Sioux Falls, SD, Driver/Front Seat Passenger Fail To Wear Properly Adjusted/Fastened Safety Belt. Case filed on June 29, 2013. Case disposed on July 22, 2013. Fine Amount: \$10.00.

Juan Vega-Sioux Falls, SD, Violation Secs. 307.179.2 (1), (2), or (3) - Driver Fail to Secure Child < 8 y/o in Child Restraint or Booster Seat. Case filed on June 29, 2013. Case disposed on July 22, 2013. Fine Amount: \$20.50.

Jennifer Jo Walker-Raymore, MO, Exceeded Posted Speed Limit (Exceeded By 16 - 19 Mph). Case filed on July 11, 2013. Case disposed on July 19, 2013. Fine Amount: \$80.50.

Andrew Darrell Wolfe-St. Joseph, MO, Driver/Front Seat Passenger Fail To Wear Properly Adjusted/Fastened Safety Belt. Case filed on June 8, 2013. Case disposed on July 18, 2013. Fine Amount: \$10.00.

LEGAL NOTICES



NOTICE OF TAX CERTIFICATE SALE

The following is a publication of land in the City of Mound City, Missouri, upon which a tax certificate is to be offered for sale at the Courthouse door, Oregon, Missouri, on August 26, 2013, at ten o'clock in the morning, according to the provisions of Chapter 140: Revised Statutes of the State of Missouri 1994.

The land is to be sold under the description as listed and the amount as shown due represents the total amount of taxes, interest, and costs, including the cost of the sale; and the certificate will be issued covering as much land as is necessary to discharge the total taxes, interest and the charges as are due at the time of the sale.

The land to be offered is as follows:

Jim Herr and Loretta Covell: Tract BGN @ SE Cor, Blk 9, Mound City O.T Parcel # 12-03-06-02-10-09. 2008- \$58.16, 2009- \$54.25, 2010- \$51.45, 2011- \$46.41, 2012- \$6.47. Special Tax Bills 2011 \$6,039.55, 2012 \$687.68. Certified Mailing \$6.11
Total including advertising cost: \$6,993.28

William and Lou Kinney, Attention James L. Kinney: E 60' Lots 2 & 3, BLK 6, Mound City O.T. Parcel # 12-03-06-02-01-03. 2010- \$97.94, 2011- \$88.55, 2012- \$76.62. Certified Mailing \$6.11
Total including advertisement cost: \$312.42

David D. Nowling: Lots 2 & N 13' Lot 3, Block 4, Mound City original town. Parcel # 12-03-06-02-09-02. 2010- \$220.27, 2011- \$199.18, 2012- \$172.50. Certified Mailing \$6.11
Total including advertising cost: \$641.26

Eric & Stacey Robinson C/O Stacey Weaver: Lots 1 & 2, Blk F, Valley View. Parcel # 09-09-31-02-07-01. 2010- \$15.20, 2011- \$13.83, 2012- \$11.98. Certified Mailing \$6.11
Total including advertising cost: \$90.32

Virginia and Robert Wilcoxson: Lots 4-6, Blk 12, Mound City EXT Parcel # 09-09-31-04-01-09. 2010- \$83.54, 2011- \$119.40, 2012- \$103.42. Certified Mailing \$6.11
Total including advertising cost: \$355.67

I, Kelly Miller, Collector of the City of Mound City, State of Missouri, do hereby certify that the foregoing is a true and correct list of the land that will be offered for sale as set forth above.

Kelly Miller, Collector

2/3tc

NOTICE OF PUBLIC HEARING 2013 PROPERTY TAX RATES

A public hearing will be held at 5:30 PM, Tuesday, August 13, 2013, at City Hall at which time citizens may be heard on the property tax rates proposed to be set by the City of Mound City. The tax rates shall be set to produce the revenues which the budget for the fiscal year beginning July 1, 2013 shows to be required from the property tax. Each tax rate is determined by dividing the amount of revenue required by the current assessed valuation. The result is multiplied by 100 so the tax rate will be expressed in cents per \$100 valuation.

Assessed Valuation (by categories)	Prior Tax Year 2012*	Current Tax Year 2013
Real Estate	\$ 8,434,943	\$ 8,865,196
Personal Property	\$ 3,395,789	\$ 3,631,353
Total Assessed Valuation	\$11,830,732	\$12,496,549
Valuation due to New Construction	\$ 421,178	\$ 366,738
Increase in Revenue due to New Construction	\$7,603 (3.69%)	\$6,936 (3.02%)
Increase in Real Estate due to Reassessment		\$ 253,903
Increase in Revenue due to Reassessment		\$4,802 (2.92%)
Fund	Property Tax Revenues Budgeted for 2013	Proposed Tax Rates for 2013 (Per \$100)
General	\$ 91,500	\$.7542
Street Light	\$ 24,900	\$.3000
Park	\$ 32,950	\$.2693
Library	\$ 49,350	\$.4063
Health	\$ 19,700	\$.1616
Totals	\$ 218,400	\$ 1.8914

*Reflects the final assessed valuation.

Based on best available information at this time and may be adjusted prior to September 1, 2013. Mayor & Board of Aldermen, City of Mound City Patsy Smith, CMC/MRCC, City Clerk

Missouri State Fair August 8-18

The 111th Missouri State Fair, themed "Chicks Dig It!", will be held August 8-18 in Sedalia. Families can save money by purchasing tickets in advance for Missouri State Fair gate admission and carnival rides. A new \$45 jumbo pass is being offered for the first time, which is a \$132 value. This new ticket provides an individual with a wristband that is valid for four consecutive days of gate admission and unlimited carnival rides, Monday, August 12, through Thursday, August 15. Both the new jumbo pass and a single day carnival ride ticket, for \$18.95, are available exclusively at any Walgreens, now through Wednesday, August 7.

"We strive to make the annual Missouri State Fair an affordable entertainment destination for everyone, especially for families," State Fair Director Mark Wolfe said. "The new jumbo pass is a significant cost savings for both children and adults who love to attend the State Fair to enjoy the carnival rides."

Walgreens and Missouri Break Time convenience stores are the outlets for the \$27 Unlimited Daily Deal ticket, which is a \$38 value. It is valid for one day gate admission and one day unlimited carnival rides, sold now through Saturday, August 17.

The advance adult gate admission ticket, which saves \$2, can be purchased at Missouri Break Time convenience stores and Orscheln Farm and Home stores, now through Wednesday, August 7. Regular adult admission tickets at the gate are \$8 each, child tickets are \$2

each for ages 6-12, and admission is free for children ages 5 and younger.

Additional savings' opportunities that will be offered during the Missouri State Fair include:

- Thursday, August 8, \$2 gate admission all day for ages 6 and older.
- Sunday, August 11, free gate admission for active military, veterans and delayed recruits with appropriate I.D. and \$1 gate admission for immediate family members.
- Sunday, August 11, through Thursday, August 15, \$5 gate admission after 5 p.m.
- Thursday, August 15, free gate admission for women of all ages.
- Sunday, August 18, \$4 gate admission for ages 13 and older and \$1 gate admission for ages 6-12.
- Sunday, August 18, free gate admission for municipal, county and state law enforcement, Missouri firefighters, EMTs, and paramedics with appropriate I.D. and \$1 gate admission for immediate family members.
- Sunday, August 18, \$15, or half price, carnival ride wristbands will be available at carnival ride ticket booths located on the midway.

The quest to honor the best in competitive areas at the Missouri State Fair goes beyond the livestock showing. This year, several new contests, and a returning favorite, will give fairgoers the opportunity to compete in a variety of areas, from vocals to body art. Registration is underway for some, while others can be entered the day of the contest. All promise to be entertaining and add excitement to the

competition schedule at this year's Missouri State Fair.

A new three-day talent contest, coordinated by a former Dallas Cowboy Cheerleader, will be held Thursday, August 15, through Saturday, August 17. The Stage on Fire: Ultimate Dance and Talent Competition will be held in the Show-Me Tent starting at 9 a.m. each day. Both individual and groups of vocalists, dancers and variety act performers can compete for the chance to win cash prizes up to \$1,000.

Entries for this competition are being accepted in multiple age divisions, starting as young as three. More information about the contest, including the entry fee, is available at the special contests page on the Fair's website.

Two new contests, in the spirit of two popular Fair concerts, have been added to the 6 p.m. Touchstone Energy Stage daily contest schedule. The Red Solo Cup Stacking Contest, named for Toby Keith's hit song, will occur the day of his Friday, August 16, concert, and the Rockin' Tattoo Competition, with a nod to the Hinder and Three Days concert, takes place Saturday, August 17.

Contestants in the Red Solo Cup Stacking Contest will compete in a timed event to see who can stack the most cups. The on-the-spot contest does not require an entry fee or registration, and the winner will receive one minute in the Fair's Money Madness Machine to win cash prizes and coupons.

The Rockin' Tattoo Competition Saturday, August 17, is also free to enter. The contest does have some restrictions and participant



hopefuls must register the day of the contest at 5 p.m. at the Touchstone Energy Stage. Qualified entrants will be judged by a panel of Missouri tattoo artists, with the winner receiving a minute in the Money Madness Machine and two grandstand tickets to the Hinder and Three Days Grace concert. For more information, visit the special contests page.

The Missouri State Fair Idol Contest, which is in its eighth year on the Budweiser Stage, is a popular contest that runs Thursday, August 8, through Sunday, August 18, with the top two winners receiving \$500 and \$250 cash prizes. Bimbo Bakeries, owner of brands Oroweat, Sara Lee, Thomas' and Nature's Harvest, is sponsoring the Idol Contest and will be providing all participants with bakery items as well.

For more details on savings, a list of advance ticket locations and other offers from sponsors, visit www.mostatefair.com, follow the Fair on Facebook and Twitter, or call 1-800-422-FAIR (3247).

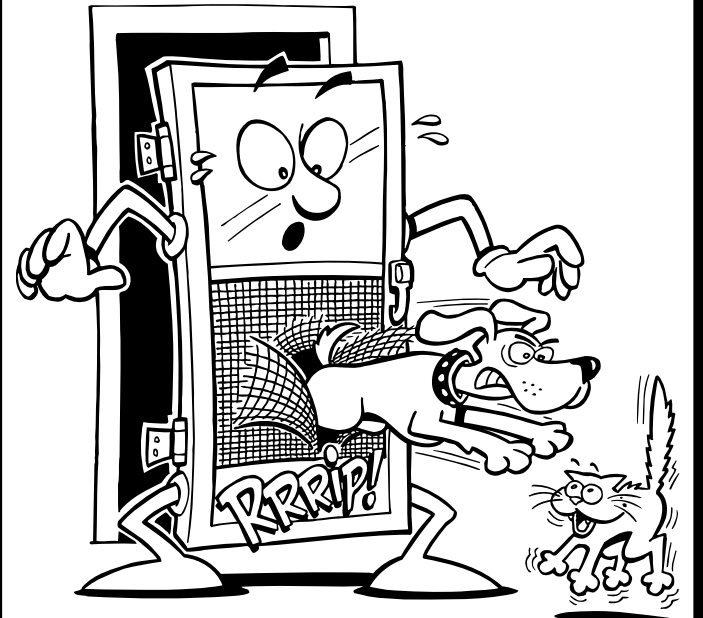
Inspirations Dance Center

Ballet, Tap, Jazz, Hip Hop, Tumbling, Cheer
For boys and girls from age 2

- Zumba & Adult Tap
- Professional Adult Teachers
- Wholesome, Friendly Environment

Limited Space Still Available, Enroll Online Today!
816-646-2404 • Clasbey Center, Savannah, MO
InspirationsDanceCenter.com

Do You Have A "Tucker"?



We Repair Screens & Windows!

McIntire Building Center

Do It Best Rental Center
108 W. 7th St. • Mound City, MO • 660-442-5416
Hours: Monday-Friday - 7:30 a.m. - 5 p.m.
Saturday - 7:30 a.m. - 4 p.m.

WOULD LIKE TO ANNOUNCE

No Fine Print or Gimmicks

JUST Great Service

Save up to \$200

Whole Home package** \$19.99 MONTH*

Package Includes:
1 - TiVo Q 2 - TiVo Minis 1 - TiVo Preview
\$200 Intallation Fee

Sign-up for Digital HD, Digital HD+ or Digital HD Premium Cable Packages
- \$100 on TiVo Whole Home Install Fee
Sign-up for 10mg Internet
- \$100 on TiVo Whole Home Install Fee

Take advantage of one or both options & Save

Don't wait! Call today!
877-405-8070 or 660-442-5156

*Monthly fee does not include applicable taxes and/or regulatory fees.
**Where TiVo service is available.

mwdata.net facebook.com/mwdata

2013-2014 Craig R-III School supply list

- | | | |
|--|--|---|
| <p>Kindergarten</p> <ul style="list-style-type: none"> 12 No. 2 pencils Eraser 3 pocket folders (no brads) Fiskars scissors (blunt end) 1 small bottle of glue 4 glue sticks Regular crayons (box of 8) Crayola Washable Markers (regular tip) Crayola Washable Markers (thin tip) Washable rug or plastic mat Paint shirt Gym shoes (new or newly washed) 1 Box Ziploc Sandwich Bags 3 large boxes of Kleenex 1 big box of Baby Wipes 1 bottle of Germ-X Small hand held pencil sharpener | <p>1st & 2nd Grade</p> <ul style="list-style-type: none"> 12 No. 2 pencils 2 pink erasers 1 bottle glue (white) 4 glue sticks Fiskars scissors 2 Boxes of regular crayons (Box of 24) 1 Crayola Washable Markers (pkg. 8), classic colors/regular tip 4 black dry erase markers School Box (no larger than a cigar box) 1 pkg. index cards 3 pocket folders Gym shoes (new or newly washed) Paint shirt 3 large boxes of Kleenex 1 bottle of Hand Sanitizer 2 pkgs. of Clorox Wipes Small hand held pencil sharpener | <p>3rd & 4th Grade</p> <ul style="list-style-type: none"> 12 No. 2 pencils 2 pkgs. of pencil top erasers Fiskars scissors School glue (bottle) 4 glue sticks Crayons (box of 24) 5 pkgs. paper (wide line)-NO Spirals 1 3-ring binder (1-1/2 inches) (no zipper) 3 pkgs. of 3x5 white index cards Pencil box (NO larger than cigar box) Paint shirt Gym shoes (new or newly washed) 4 large boxes of Kleenex 2 pkgs. of Clorox Wipes Small hand held pencil sharpener |
| <p>5th & 6th grade</p> | | |
| <ul style="list-style-type: none"> 6 - No. 2 pencils Eraser Fiskars scissors Ruler (metric/standard) Glue or glue sticks 2 pkgs. of colored pencils 2 erasable pens 1 highlighter 4 dry erase markers | <ul style="list-style-type: none"> 2 pkgs. of markers Wide-lined paper Paint shirt 4 pocket folders or Trapper Keeper with divider 4 large boxes of Kleenex 2 pkgs. of Clorox Wipes Small hand held pencil sharpener Gym shoes (new or newly washed) | |

Daily routines simplify getting kids to school

Does the beginning of a new school year bring chaos to the household? A family routine is essential to avoid hurried mornings and frantic evenings.

"Most parents would rather be kind and relaxed, not a drill sergeant barking out orders," said Lisa Wallace, University of Missouri Extension human development specialist. "By planning a few rules and setting a routine, parents teach children responsibility and are more effective parents."

Wallace offers tips to gently bring some order to household chaos:

Mornings

- Each child should have an alarm and know how to use it.
- If one must, check to make sure the children are up.
- No TV, computers or video games until they are dressed and ready to walk out the door.

- If some children are dawdlers, don't try to hurry them; just get them up earlier.

- What is the child's wake-up style? Some kids pop out of bed quickly. Others need a few minutes to become fully awake. They often respond to having their back rubbed while the parent talks to them in a calm, soothing voice. Of course, the parent will have to plan on the extra five minutes it takes them to soothe them awake, but this also can be a very comforting time for a parent. Be in tune to the kids' wake-up styles and one will benefit.

- Set the children's clocks five or 10 minutes ahead. Even the teenagers might not notice and it gives the parent a little breathing space.

Evenings

- Have kids lay out their clothes for the next day. Parents can do it themselves for the younger ones, or help them do it.

- Lay out dishes and any nonrefrigerated foods for breakfast.

- Pack the next day's lunches or get lunch money ready.

- Sign any permission slips, report cards, forms, etc.

General Organization

- Have a drawer, basket or notebook for each child's school papers.

- Keep a big family calendar to jot down appointments and events such as sports' practices, games, PTA meetings, etc.

- Make sure the children know that they are responsible for giving parents papers to be signed, etc. Of course, for young children, parents will need to remind them each evening and periodically go through their backpack.

- Have a specific place for each child to keep backpacks and other items for school.

- Rotate family tasks such as setting the table, cooking, cleaning dishes, etc., so each family member has a job. By giving to the family, children feel good about themselves. Plus, it's one less thing to do.

HI! STUDENTS AND FACULTY: Welcome back! We will be glad to see you as the Craig R-III School District OPENS MONDAY, AUG. 19 for the 2013-2014 school year.

MEETINGS FOR TEACHERS AND OTHER EMPLOYEES WILL BE HELD
WEDNESDAY, AUG. 14
THURSDAY, AUG. 15
FRIDAY, AUG. 16

MISSION STATEMENT

The mission of the Craig R-III School District is to offer a wide range of educational opportunities in a safe environment which will allow students to master academic skills and become life-long learners and responsible, respectful citizens.

Back-to-School Night And Open House Thursday, August 15, 2013 5:30 p.m. - 7:00 p.m.

NOTICE OF NONDISCRIMINATION

Students, parents of elementary and secondary school students, employees, applicants for admission and employment, sources of referral of applicants for admission and employment with Craig R-III School District are hereby notified that this institution does not discriminate on the basis of sex or handicap in admission, access to, treatment, or employment in its programs and activities.

Any person having inquiries concerning Craig R-III School District's compliance with the regulations implementing Title IX or Section 504 is directed to contact Mike Leach, Title IX and Section 504 Coordinator, Craig, MO 64437, telephone number 660-683-5351, who has been designated to coordinate Craig R-III School District's efforts to comply with the regulations implementing Title IX and Section 504.

Any person may also contact the Assistant Secretary for Civil Rights, U.S. Department of Education, regarding Craig R-III School District's compliance with the regulations implementing Title IX or Section 504.

CRAIG R-III 2013-2014 CALENDAR

Aug. 14	Staff Orientation	Dec. 20	Dismissal 12:45 - First Semester Ends
Aug. 15	Staff Orientation	Dec. 23	Christmas Break - No School
Aug. 16	Staff Orientation	Jan. 3	No School - Teacher In-Service
Aug. 19	School Year Opens, Full Day	Jan. 6	School Resumes, 2nd Semester Begins
Sept. 2	Labor Day - School Closed	Jan. 20	MLK Day - School Closed
Sept. 23	No School - Teacher In-Service	Feb. 3	No School - Teacher In-Service
Oct. 18	1st Quarter Ends	Feb. 17	Presidents' Day - School Closed
Oct. 21	Second Quarter Begins	March 7	Third Quarter Ends
Oct. 23	Dismissal 12:45 Parent-Teacher Conferences	March 10	Fourth Quarter Begins
Oct. 25	No School - Teacher In-Service	March 24	No School - Teacher In-Service
Nov. 27	Thanksgiving - School Closed	April 18-21	Easter Break - No School
Nov. 28	Thanksgiving - School Closed	May 9	Graduation
Nov. 29	Thanksgiving - School Closed	May 16	Dismissal 12:45 - Last Day of School
Dec. 9	No School - Teacher In-Service		- 4th Quarter Ends

Potential make-up days: Jan. 20, Feb. 17, April 21,
May 19, 20, 21

School will be in session from 8:25 a.m. to 3:10 p.m. for a 6.25 hour day.

AHERA NOTIFICATION

The required annual federal notification is herein served to all parents, employees, and interested residents of the District that they may review and inspect the AHERA Management Plan for the District at any time during regular business hours in the superintendent's office.

Any Additional Information May Be Obtained From:

**MIKE LEACH, Superintendent, or
KEN GROVE, Elementary & Secondary Principal**
660-683-5351 660-683-5431



REGISTRATION

High School Registration Will Be Held On Friday, August 9,
From 11 a.m.-3 p.m.

7th and 8th Grade Will Register First Hour
On Monday, August 19.

If you are unable to come in during those times please call
the school.

Any students may register the first day of school if they were
away at the time of registration.

Activity fee of \$20 is due at the time of registration.

School Immunization Law

This notice is to serve as a reminder that those children who are not properly immunized or properly exempt will not be in compliance and notified by the Division of Health that, "It is unlawful for any student to attend school unless he has been immunized under the rules and regulations of the Division of Health and shall not be admitted until the student meets the legal requirements for immunization or exemptions."

Parents of all children are urged to comply with the immunization schedule set by the Division of Health.

Faculty Members

MIKE LEACH.....	Superintendent
KEN GROVE.....	High School & Elementary Principal
RALPH BALL.....	Ag Science
STEPHANIE BURGE.....	Business & Technology
CINDY WALLACE.....	Title I
MIKE SMITH.....	Music/Band
LANI CLAYTON.....	Counselor
DONNA VEST.....	Librarian
JENNIFER MCGINNESS.....	Kindergarten
BRITTANY SCHLAPIA.....	First Grade
BRITTANY SCHLAPIA.....	Second Grade
LAURA WOOTEN.....	Third Grade
LAURA WOOTEN.....	Fourth Grade
CAROLYN PYEATT.....	Fifth Grade
CAROLYN PYEATT.....	Sixth Grade
PAM COOPER.....	Speech
CODIE SWOPE.....	Physical Education
BRIAN WIEDMER.....	Social Studies
KAREN ZOST.....	Special Services
MELISSA BREEDLOVE.....	Math
TERESA JACKSON.....	Science
HEATHER MCCOY.....	Communication Arts
TRACY SIPES.....	Art

Program for the First Day

Buses will pick up and take home children.

School will be in session for a full day
August 19

Grades K to 6 enroll in their own rooms.

Kindergarten Is An All-Day Program

General Information

Children entering the first grade must be six years of age on or before August 1, 2013. Children entering kindergarten must be five years of age on or before August 1, 2013. All beginners must present birth certificate and a complete immunization record.

School Breakfast and Lunch will be served on Monday, August 19.

Bus routes approx. the same as last year.

Contact the school prior to August 19 for additional questions.

LUNCHES

\$1.85 Grades 7-12; \$1.60 K-6
40¢ Reduced; \$2.50 Adults

BREAKFAST

\$1.25 K-12 and Adults; 30¢ Reduced
Kindergarten Afternoon Milk 30¢; Extra Milk 30¢

Support Staff

REGINA GILLENWATER.....	Secretary to Superintendent
DEBBIE KENT.....	Elementary and High School Secretary
CATHY ALTENA.....	Paraprofessional
BILLY STONE.....	Maintenance/Custodial
TRACEY KEPHART.....	Custodial
KAY SMITH.....	Food Service Director
PAM HAER.....	Food Service
SUSAN LENTZ.....	Health Services
CHARLES BACHLE.....	Technology Support
KATHY LEACH.....	Parents As Teachers

Board of Education Members

DEAN BIERMANN.....	President
REBECCA MONROE.....	Vice-President
REGINA GILLENWATER.....	Secretary
JAYSON HOWARD.....	Treasurer
MIKE WRIGHT.....	Member
RONNIE HAER.....	Member
GLORIA HINRICHS.....	Member
ROB LILES.....	Member

NATIONAL SCHOOL LUNCH & BREAKFAST PROGRAM

The Craig R-3 School District announced its revised free and reduced price policy for school children unable to pay the full price of meals served in schools under the National School Lunch Program and the School Breakfast Program. Local education officials have adopted the following family-size income criteria for determining eligibility:

Household Size	Maximum Household Income Eligible for Free Meals			Maximum Household Income Eligible for Reduced Price Meals		
	Annually	Monthly	Weekly	Annually	Monthly	Weekly
1	\$14,937	\$1,245	\$288	\$21,257	\$1,772	\$409
2	20,163	1,681	388	28,694	2,392	552
3	25,389	2,116	489	36,131	3,011	695
4	30,615	2,552	589	43,568	3,631	838
5	35,841	2,987	690	51,005	4,251	981
6	41,067	3,423	790	58,442	4,871	1,124
7	46,293	3,858	891	65,879	5,490	1,267
8	51,519	4,294	991	73,316	6,110	1,410
Each additional household member	+5,226	+436	+101	+7,437	+620	+144

Children from families whose current income is at or below those shown are eligible for free or reduced price meals. Applications are available at the school office. To apply, fill out a Free and Reduced Price School Meals Family Application and return it to the school. The information provided on the application is confidential and will be used only for the purpose of determining eligibility. Applications may be submitted any time during the school year. A complete application is required as a condition of eligibility. A complete application includes: (1) household income from all

sources or Food Stamp/Temporary Assistance case number, (2) names of all household members, and (3) the signature and last four digits of social security number or indication of no social security number of adult household member signing the application. School officials may verify current income at any time during the school year.

Foster children may be eligible regardless of the income of the household with whom they reside.

If a family member becomes unemployed or if family size changes, the family should contact the school to file a new application. Such changes may make the children of the family eligible for these benefits.

Under provisions of the policy, the district bookkeeper will review the applications and determine eligibility. If a parent is dissatisfied with the ruling of the official, they may wish to discuss the decision with the hearing official on an informal basis or he may make a request either orally or in writing to the Superintendent whose address is 402 N. Ward, Craig, MO 64437 for a hearing to appeal the decision. Hearing procedures are outlined in the policy. A complete copy of the policy is on file in each school and in the central office where any interested party may review it.

In accordance with Federal Law and U.S. Department of Agriculture policy, this institution is prohibited from discriminating on the basis of race, color, national origin, sex, age, or disability. To file a complaint of discrimination, write USDA, Director, Office of Adjudication, 1400 Independence Avenue, SW, Washington, D.C. 20250-9410 or call toll free (866) 632-9992 (Voice). Individuals who are hearing impaired or have speech disabilities may contact USDA through the Federal Relay Service at (800) 877-8339; or (800) 845-6136 (Spanish). USDA is an equal opportunity provider and employer.

2013-2014 Mound City R-2 Middle School supply list

- Preschool**
- 1 change of clothes in a bag with child's name
 - 1 small travel pillow w/pillowcase
 - 1 small crib-sized blanket
 - 1 backpack with child's name
 - 2 pkg. wet wipes (refills)
 - 2 two-pocket folders (plastic preferred)
 - 1 pair gym shoes
 - 1 box tissues (4 yr.-olds only)
 - 1 box Clorox wipes (3 yr.-olds only)

- Kindergarten**
- 3 two-pocket folders (paper)
 - 1 two-pocket folder (plastic)
 - 4 boxes of primary crayons (8 only)
 - 1 Prang or Crayola watercolor
 - 4 small erasers
 - 8 pencils
 - 1 pair blunt ended Fiskars scissors (labeled with name)
 - 1 bottle Elmer's glue
 - 4 glue sticks
 - 1 pkg. Black Expo dry erase markers
 - 1 paint shirt (labeled with name)
 - 1 clean old sock (to use as a marker board eraser)
 - 1 pair gym shoes (any clean pair is fine)
 - 1 backpack
 - 1 pkg. 3 x 5 inch note cards
 - 1 can play dough
 - 1 box Clorox wipes
 - 1 school box
 - **See art supplies needed
 - Please label all supplies.

- First Grade**
- 12 No. 2 pencils
 - 2 erasers
 - 24 crayons
 - 1 pkg. Black Expo dry erase markers (No colored mark-

- ers-dry erase only)
- 1 dry erase eraser or an old sock
- 3 writing tablets for K or 1st grade (oblong)
- 1 school box
- 1 Fiskars scissors
- 2 Elmer's white glue
- 1 pair of gym shoes (non-marking soles)
- 1 paint shirt
- 1 watercolor paints
- 1 box colored pencils
- 3 boxes quart Ziploc bags
- 3 boxes of Kleenex
- 2 containers Clorox wipes
- 4 two-pocket folders, 3-hole punched
- 3 pkgs. 3x5 lined index cards (100 count)
- 1 empty/clean Pringle's can with lid
- 1 three-ring binder, 1-1/2 inches, with see-through cover and pockets on the inside front and back covers
- 1 three-hole punched zippered pencil pouch
- 1 roll of paper towels
- 1 pair ear buds
- 1 composition note book (black & white cover)
- **See art supplies needed
- Please put child's name on all supplies.

- Second Grade**
- 1 box of 24 crayons
 - 3 boxes of facial tissue
 - 4 double pocket folders
 - 3 glue sticks
 - 1 12 inch ruler
 - 2 pkgs. note book paper
 - 1 spiral note book
 - 24 pack No. 2 pencils, name on pack
 - 2 red ink pens
 - 2 big pink erasers
 - 1 Fiskars scissors
 - 1 clipboard
 - 1 pkg. Black Expo dry erase

- markers
- 1 box quart Ziploc bags (boys only)
- 1 box gallon Ziploc bags (girls only)
- 1 white board eraser or an old sock
- 1 backpack
- 1 pkg. colored pencils
- 1 watercolor paints - Prang or Crayola
- 1 pair gym shoes (non-marking soles)
- 1 paint shirt (an old shirt that covers clothes)
- 1 zipper pouch for supplies in desk
- 1 pair ear buds
- Bring Panther book from 1st Grade
- **See art supplies needed
- Please put child's name on all supplies.

- Third Grade**
- 1 pair of gym shoes
 - 1 watercolor paints (Prang or Crayola)
 - 2 boxes Kleenex
 - 3 folders with both pockets
 - 1 pack No. 2 pencils (no mechanical)
 - 4 dry erase markers
 - 1 dry erase eraser
 - 1 clipboard
 - 1 pair of scissors
 - 2 glue sticks
 - 1 colored pencils
 - 1 box of crayons
 - 2 packages of lined index cards, 3x5
 - 1 supply box
 - 2 pkgs. of Clorox wipes
 - 2 red pens
 - 1 paint shirt
 - 2 pkgs. of wide ruled, loose paper
 - 2 (1 subject) spiral note books-different colors
 - 1- three-ring binder, 1-1/2 inches, with see-through

- cover and pockets on the inside front and back covers
- 1 3-hole punched zippered pencil pouch
- 1 pkg. of Post It notes
- 1 pair ear buds
- **See art supplies needed
- Please put child's name on all supplies.

- Fourth Grade**
- 1 box of 24 crayons
 - 1 colored pencils
 - 1 package of 24 No. 2 pencils
 - 4 dry erase markers and eraser
 - 1 scissors
 - 2 glue sticks
 - 1 ruler with (cm. and in.)
 - 1 watercolor paints - Prang or Crayola
 - 1 supply box (one that will fit inside desk)
 - 3 spiral note books (1 subject)
 - 2 folders with pockets
 - 2 boxes of Kleenex
 - 1 paint shirt
 - 1 pair of gym shoes
 - 1 box of tissues (for art)
 - 1 package Clorox or wet wipes
 - 2 pkgs. wide ruled loose paper
 - 1 3-ring binder, 1-1/2" with see through cover and pockets on the inside front and back covers
 - Pencil pouch (that fit in binder) (3 hole punch)
 - 1 pkg. index cards
 - Markers
 - 2 red pens
 - 1 pair ear buds
 - **See art supplies needed
 - Please put child's name on all supplies.

- Art Supplies (K-4 only)**
- 1 roll paper towels
 - 1 hand held pencil sharpener
 - 1 watercolor paint set (Crayola or Prang)

- Fifth Grade**
- 1 trapper keeper only
 - 1 5-subject (3-hole punched) notebook
 - 2 12+ count pkgs. pencils (1 August, 1 January)
 - 2 black pens
 - 2 red pens
 - 1 box colored pencils
 - 1 pkg. lined note cards
 - 3 boxes of Kleenex for home-room teacher
 - 1 pkg. highlighters
 - 6 pocket folders (3-hole punched, w/out metal brads)
 - 1 jump drive
 - 1 glue stick
 - 1 pair of ear buds
 - 1 pair of gym shoes
 - 1 TI-30XIIS calculator
 - 1 pencil pouch
 - 1 one-subject note book for reading

- Sixth Grade**
- 1 3 inch binder or trapper keeper
 - 1 5-subject (3-hole punched) note book
 - 2 12+ count pkgs. pencils (1 August, 1 January)
 - 2 black pens
 - 2 red pens
 - 1 box colored pencils
 - 1 pkg. lined note cards
 - 3 boxes of Kleenex for home-room teacher

- 1 pkg. highlighters
- 6 pocket folders (3-hole punched, w/out metal brads)
- 1 jump drive
- 1 glue stick
- 1 pair of ear buds
- 1 pair of gym shoes
- 1 TI-30XIIS calculator
- 1 pencil pouch
- 1 one-subject note book for writing

- 7-8 Grades**
- 1 3-inch binder or trapper keeper
 - 1 5-subject (3-hole punched) note book
 - 2 12+ count pkgs. pencils (1 August, 1 January)
 - 2 black pens
 - 2 red pens
 - 1 box colored pencils
 - 1 pkg. lined note cards
 - 3 boxes of Kleenex for home-room teacher
 - 1 pkg. highlighters
 - 6 pocket folders (3-hole punched w/out metal brads)
 - 1 jump drive
 - 1 glue stick
 - 1 pair of ear buds
 - 1 pair of gym shoes
 - Gym clothes
 - 1 TI-30XIIS calculator
 - 5 plastic containers w/snap-on lids (Cool Whip)
 - 1 pencil pouch

Mound City R-2 School District

Will Open Schools on

Monday, August 19, 2013

The Mound City R-2 School District Staff and Administration
Welcome Your Support and Interest in Our School System During the 2013-2014 School Year

MISSION STATEMENT:

Education is a key principle in the foundation of our country and the democracy in which we live. A school board has a solemn responsibility to ensure an appropriate education for the young people and children who reside in the school district. The Mound City R-2 School Board eagerly accepts this responsibility and proclaims this statement of mission: "The Mound City R-2 School Board directs and employs the district staff to accept each individual student and his own unique social and emotional, physical, and mental capabilities, to develop and nurture specific knowledge and skills in that individual enhancing their present and future life!"

Community Involvement in Decision Making

The Board of Education believes that the Mound City R-2 School District belongs to the people it was created to serve. The Board shall give substantial weight to the advice it receives from individuals and community groups interested in the school system, but shall use its own judgment in arriving at decisions. The following are two major avenues by which the will of the community may influence the Board's decisions and/or the development of Board policies, rules and regulations.

- Board members themselves will remain mindful that they are elected to represent and are directly accountable to the patrons of the district.
- Patrons of the district will be encouraged to express ideas, concerns, and judgments about the school programs in the following ways:
 - Written suggestions of proposals to the Board of Education.
 - Presentations at hearings.
 - Responses to surveys conducted under the auspices of the Board of Education.
 - Comments at meetings of the Board of Education.
 - Service on citizens' advisory councils.
 - Appropriate input into state and federal applications of the district.

Federal/State Grants

The Mound City R-2 School District participates in numerous State and Federal Programs. These programs are written to comply with all regulations as shown on the District's application documents found in the Superintendent's office. These documents are always available for review and public comment.

AHERA Notification

The required annual federal notification is herein served to all parents, employees, and interested residents of the District that they may review and inspect the AHERA Management Plan for the District at any time during regular business hours in the superintendent's office.

Note: All known friable asbestos was removed from the District's buildings by Northwest Missouri Environmental Services in August of 1991.

FOR ADDITIONAL INFORMATION CONTACT:

- MRS. JAN SEITZ, Elementary / Middle School Principal, 442-5420**
- MR. KOREY MILES, High School / Middle School Principal, 442-5429**
- MR. KEN EATON, Superintendent, 442-3737**

NOTICE OF NONDISCRIMINATION

Applicants for admission and employment, students, parents of elementary and secondary school students, employees, sources of referral of applicants for admission and employment, and all unions or professional organizations holding collective bargaining or professional agreements with Unified School District Mound City R-2 are hereby notified that this institution does not discriminate on the basis of race, color, national origin, sex, age, or handicap in admission or access to, or treatment or employment in, its programs and activities. Any person having inquiries concerning Unified School District Mound City R-2 compliance,

with the regulations implementing Title VI, Title IX, or section 504 is directed to contact Mr. Ken Eaton, Mound City, MO 64470, 660-442-3737. Mr. Ken Eaton has been designated by Unified School District Mound City R-2 to coordinate the institution's efforts to comply with the regulations implementing Title VI, Title IX, and Section 504. Any person may also contact the Assistant Secretary for Civil Rights, U.S. Department of Education, regarding the institution's compliance with the regulations implementing Title VI, Title IX, or Section 504.

NATIONAL SCHOOL LUNCH & BREAKFAST PROGRAM

The Mound City R-2 School District announced its revised free and reduced price policy for school children unable to pay the full price of meals served in schools under the National School Lunch Program and the School Breakfast Program.

Local education officials have adopted the following family-size income criteria for determining eligibility:

Household Size	Maximum Household Income Eligible for Free Meals			Maximum Household Income Eligible for Reduced Price Meals		
	Annually	Monthly	Weekly	Annually	Monthly	Weekly
1	\$14,937	\$1,245	\$288	\$21,257	\$1,772	\$409
2	20,163	1,681	388	28,694	2,392	552
3	25,389	2,116	489	36,131	3,011	695
4	30,615	2,552	589	43,568	3,631	838
5	35,841	2,987	690	51,005	4,251	981
6	41,067	3,423	790	58,442	4,871	1,124
7	46,293	3,858	891	65,879	5,490	1,267
8	51,519	4,294	991	73,316	6,110	1,410
Each additional household member	+5,226	+436	+101	+7,437	+620	+144

Children from families whose current income is at or below those shown are eligible for free or reduced price meals. Applications are available at the school office. To apply, fill out a Free and Reduced Price School Meals Family Application and return it to the school. The information provided on the application is confidential and will be used only for the purpose of determining eligibility. Applications may be submitted any time during the school year. A complete application is required as a condition of

eligibility. A complete application includes: (1) household income from all sources or Food Stamp/Temporary Assistance case number, (2) names of all household members, and (3) the signature and last four digits of social security number or indication of no social security number of adult household member signing the application. School officials may verify current income at any time during the school year.

Foster children may be eligible regardless of the income of the household with whom they reside.

If a family member becomes unemployed or if family size changes, the family should contact the school to file a new application. Such changes may make the children of the family eligible for these benefits.

Under the provisions of the policy, the district bookkeeper will review the applications and determine eligibility. If a parent is dissatisfied with the ruling of the determining official, they may wish to discuss the decision with the hearing official on an informal basis or he may make a request either orally or in writing to the Superintendent whose address is 708 Nebraska St., Mound City, MO 64470. Hearing procedures are outlined in the policy. A complete copy of the policy is on file in each school and in the central office where any interested party may review it.

In accordance with Federal Law and U.S. Department of Agriculture policy, this institution is prohibited from discriminating on the basis of race, color, national origin, sex, age, or disability. To file a complaint of discrimination, write USDA, Director, Office of Adjudication, 1400 Independence Avenue, SW, Washington, D.C. 20250-9410 or call toll free (866) 632-9992 (Voice). Individuals who are hearing impaired or have speech disabilities may contact USDA through the Federal Relay Service at (800) 877-8339; or (800) 845-6136 (Spanish). USDA is an equal opportunity provider and employer.

Transportation

The Mound City R-2 School District will run three bus routes this year. Four year-old preschool and kindergarten students will be transported to and from school, including four year-old preschool and kindergarten students that live less than a mile from school. All older students living within one mile cannot ride. All students four yrs. and older may be transported to and from school. Please call the Transportation Office at 442-5111 or Superintendent at 442-3737 with questions regarding pick-up points and times. The regular school day is 8:15 a.m. until 3:29 p.m. Students will be unloaded and loaded on the east side of school on Mound Street.

School Immunization Law

This notice is to serve as a reminder that those children who are not properly immunized or properly exempt will not be in compliance and notified by the Division of Health that, "It is unlawful for any student to attend school unless he has been immunized under the rules and regulations of the Division of Health and shall not be admitted until the student meets the legal requirements for immunization or exemptions."

Parents of all children are urged to comply with the immunization schedule set by the Division of Health.

Elementary Instructional Staff

MRS. JAN SEITZ.....	Principal
MRS. LISA CATON.....	Early Childhood Sp. Ed.
MRS. SARAH OSBURN.....	Kindergarten
MRS. LAURA FOREHAND.....	Grade One
MRS. KRISTA BURGE.....	Grade Two
MS. CHERYL MAUDERLY.....	Grade Three
MRS. LORI BUTRICK.....	Grade Four
MRS. CATHERINE KENNY.....	K-12 Art
MRS. BECKY REINIG.....	K-12 Vocal Music
MRS. BETH GRAVES.....	K-6 Counselor
MRS. LEXI HECK.....	Special Services
MRS. SANDY HUGHES.....	Speech Pathologist
MRS. DEBRA CLIFTON.....	Title Reading

Middle School Staff

MRS. JAN SEITZ.....	Prof. Dev/Instruction
MR. KOREY MILES.....	Activities
MRS. CAROLYN HALL.....	Science
MR. RYAN OSBURN.....	Social Studies
MR. CALE LYONS.....	Mathematics/At-Risk
MRS. EMILY HAMM.....	Language Arts

Board of Education/Central Office

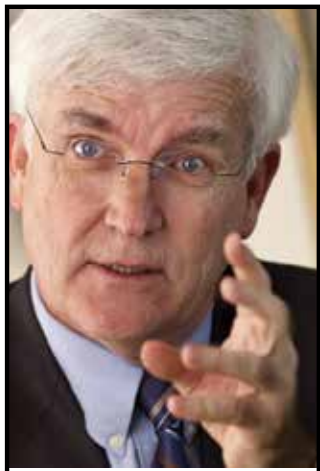
MR. ALAN YOCUM.....	President
MR. JEFF HOLSTINE.....	Vice-President
MR. ROBERT GIBSON.....	Treasurer
MR. MITCHELL CORBIN.....	Member
MR. CHAD DERR.....	Member
MR. BRIAN TUBBS.....	Member
MRS. KARMA METZGAR.....	Member
MR. KEN EATON.....	Superintendent
MRS. DEBORAH LOUCKS.....	Secretary to Superintendent and Board Secretary

2013-2014 SCHOOL CALENDAR

August 15	Teachers' In-Service
August 16	Teachers' In-Service
August 19	*School Opens. Dismissed at 12:30 p.m.
September 2	Labor Day - School Closed
September 16	No School - Teachers' In-Service
October 7	No School - Teachers' In-Service
October 16	First Quarter Ends
October 17	Second Quarter Begins
October 24	Dismissal 12:30 p.m. - Parent/Teacher Conferences
October 25	No School
November 4	Teachers' In-Service - No School
November 27-29	Thanksgiving Break - School Closed
December 20	Dismissal 12:30 p.m. - First Semester Ends
December 23	Christmas Break Begins
January 6	No School - Teachers' In-Service
January 7	School Resumes - Second Semester Begins
January 20	Martin Luther King, Jr., Day - School Closed
February 3	No School - Teachers' In-Service
February 17	Presidents' Day - School Closed
March 3	Teachers' In-Service - No School
March 11	Third Quarter Ends
March 12	Fourth Quarter Begins
March 12	March Madness
March 13-14	No School - March Madness
April 7	No School - Teachers' In-Service
April 17	Dismissal 12:30 p.m. - Easter Break Begins
April 18-21	Easter Break - No School
May 21	Fourth Quarter Ends - Last Day Of School - Dismissal 12:00 Noon (1/20, 2/17, 3/13, 4/18, 5/22, 5/23 - Possible Snow Make-up Days)

School will be in session from 8:15-3:29 for a 6.78 hour day. ALL SCHOOL CANCELLATIONS WILL BE ANNOUNCED ON: KKJO (105.5), KMA (96.0), KFEQ (68.0), KNIM (97.1), KLZA (101.3), KQ-2 TV and Textcaster cell phone service.

PARENTS: If you are buying new shoes for your students, grades K-12, please try to make them non-marking soles if possible.



Public Notices in this newspaper help me participate in my community.

State law requires government entities at all levels, from water districts to city councils and school boards, to place notices of many of their activities in a legal newspaper. This is a legal newspaper. I subscribe to it, and I read it.

I read legal notices to find out when those people will meet, what rules and laws they're talking about and when I can offer my two cents worth.

Would a similar notice posted somewhere on the internet alert me to what's going on around here?

The answer to that is obvious. No, it would not.

PUBLIC NOTICES
"Because the People Must Know."

Safely preserve homegrown tomatoes

If gardeners are lucky, they're getting delicious fresh tomatoes from the garden. If they're even luckier, they have extra that they want to preserve for the months they can't walk outside and pick some fresh from the garden.

There are several things to consider when thinking about preserving tomatoes safely, says Tammy Roberts, a University of Missouri (MU) Extension nutrition and health education specialist.

"Vine-ripened, disease-free, firm tomatoes are the best for canning," Roberts says. Tomatoes aren't as acidic as they used to be, so add acid to home-canned tomatoes to guard against botulism. Add two tablespoons of bottled lemon juice per quart of tomatoes, or one tablespoon for pints or use four tablespoons of five percent vinegar per quart (two tablespoons per pint) of tomatoes instead of lemon juice, but that can cause undesirable flavor changes.

To remove skins from tomatoes, wash and dip into boiling water for 30-60 seconds or until the skins split (dipping them with a cheesecloth pouch works

well). Then dip the tomatoes in cold water, remove the skins and cores and crush, halve or leave whole.

Whole, halved or crushed tomatoes can be hot or raw packed and processed in a pressure or boiling-water canner.

"Pressure-canned tomatoes don't look as pretty as tomatoes canned in boiling water, but the pressure canned tomatoes are a higher quality, more nutritious product," Roberts says. Add 1 teaspoon of canning salt if desired. Leave half an inch of head space.

If using the pressure canner method, crushed tomatoes should be hot packed. Pints and quarts can be processed for 20

minutes at six pounds of pressure, or for 15 minutes at 11 pounds of pressure. Hot or raw packed whole or halved tomatoes packed in water in pints or quarts can be processed for 15 minutes at six pounds of pressure or 10 minutes at 11 pounds of pressure.

To process in a boiling water canner, whether they are hot or raw packed in water, pints should be processed for 40 minutes and quarts for 45 minutes. If a person lives more than 1,000 feet above sea level, increase that time by five minutes.

To see all guides in MU Extension's "Quality for Keeps" series, go to extension.missouri.edu/preservation.

COTTON BODY SHOP & TOW SERVICE

Larry & Troy Cotton
Oregon, MO
Shop: 660-446-2008
Home: 660-446-2561



Sign up for High-Speed DSL or Dial-Up Internet today.

660-572-7900 • www.socket.net

JEAN MANEKE ATTORNEY-AT-LAW



115 West Nodaway
Oregon, Missouri
660-446-3453



Phone Answered 5 Days a Week
Office Hours 9:00 a.m. to 4:30 p.m. Every Tuesday
Principal office in Kansas City, MO



J & E Concrete

Commercial & Residential Concrete Work

Jeff Karsten
Cell: 816-262-5933

Free Estimates

Stripes & signs

& Other Neat Stuff!



SCHOOL TEAMWEAR A SPECIALTY!

BIG CITIES CAN'T BEAT OUR HOMETOWN SERVICE!

Falls City, NE • 402-245-5323

www.otherneatstuff.com

1st Class Carports, Sheds & Garages

13 Colors To Choose From

Jim Salfrank
816-387-7175

Charla Salfrank
660-442-3555

WE REPAIR WIND/FLOOD DAMAGE.

Shop Falls City, NE

Less than a 30 minute drive from Mound City - Falls City has a lot to offer

Yesterday's Closet

We Accept 25 Items Every 2 Weeks on Consignment.

1606 Stone St. • Falls City, NE
402-245-4888

Great selection of man cave and decor items!
Stop and Visit Our Annex, Called Etc.
1604 Stone St. • Falls City, NE



Daily Specials

1124 Harlan Street
Falls City, NE 68355
402-245-2549

Serving From 7 a.m. - 8 p.m.

Chaney Furniture Co.

Since 1921

Upgrade your foundation to a Tempur-Pedic® adjustable base
For the ultimate Tempur-Pedic® experience combine the mattress of your choice with Tempur-Pedic's exclusive adjustable bed base.

1523 Stone St. • PO Box 267
Falls City, NE
402-245-3912
877-245-4844

www.chaneyfurniture.com



North Hwy. 73 • Falls City, NE
402-245-2419

We're here for your harvest needs.

MASSEY FERGUSON



We have all of your baling supplies or whatever you need for upcoming fairs and animal needs.

402-245-4588

1521 E. 14th St. (East Highway 159)
Falls City, NE



RadioShack DEALER

1610 Stone St. • Falls City
402-245-5029

"A World of Possibilities"

FALLS CITY TRAVEL COMPANY

KELLY CARPENTER, MANAGER

1608 Stone Street,
P.O. Box 26
Falls City

Fax & Phone: 402-245-3344
fctravel@scentco.net

True Value

AUGUST BARGAINS

12 pk. Canning Jars - Pints

SALE \$7.99

Quart Pennzoil Motor Oil

SALE \$2.99

402-245-2725

1519 Stone St. • Falls City



Heritage Falls Candles & Gifts

Visit us during the Cobblestone Festival

Flavors of the Month

Jasmine, Sun Washed Linen & Wildberry Scone

Bring this ad in for 10% Off any one item in the store.

1614 Stone St., Falls City, NE
402-245-3443 (Phone & Fax)
www.heritagefallscandles.com



See us for your flooring, painting projects & window projects.

1619 Chase Street • Falls City, NE
Phone: (402) 245-4444

Mary's Appliance

1612 Stone St. • Falls City
402-245-4003

FREE 10-YEAR

MAJOR PARTS WARRANTY WITH EVERY APPLIANCE PURCHASED
Must bring in coupon

Norma's Antique Mall, LLC

In Addition to Our Fine Quality Antiques, check out the...

BASEMENT

SUMMERTIME SALE

Bargains everywhere, huge discounts

Norma Britzell, Owner

normasantiquemall@yahoo.com

1715 Stone St. • Falls City
402-245-4338

Mon. - Sat: 10 a.m. - 5 p.m.



America's Drive-In

Try our NEW

Cheesy Bacon Pretzel Dogs

HALF-PRICE SHAKES AFTER 8 P.M.

1305 Harlan, Falls City, NE

402-245-3525

OPEN UNTIL 10 P.M. DAILY



Treat yourself to \$1 any size drinks, \$1 cookies, and 89¢ cones.

1324 Harlan Street

Falls City, NE 68355

402-245-3355

Open 10:30 a.m.-9:30 p.m.

Farm & City Supply

Carhartt shirts, shorts, & selected jeans.

HUGE MARKDOWNS

2618 Harlan Street • Falls City, NE 68355

ACE Hardware 402-245-3400

La Fiesta Mexican Restaurant

Authentic Mexican Food

Every Wednesday \$1.99 Margaritas
Every Thursday \$9.99 Margaritas

M-TH - 11 a.m. - 9 p.m.

F-S - 11 a.m. - 10 p.m.

SUN - 11 a.m. - 9 p.m.

1516 Stone Ave., Falls City
402-245-4400

Brown's SHOE

SUMMER TRUCKLOAD SALE!

1615 STONE ST. • FALLS CITY, NE

PH. 402-245-3016

HOMETOWN FLORAL & GIFTS, INC.

1605 Stone St. • Falls City, NE

402-245-2200

Cobblestone

In-Store Specials

August 23-25

Pizza Hut

MAKE IT GREAT™

1022 Harlan St., Falls City, NE

Call in orders - 402-245-2481

Buffet 11:30 a.m.-1:00 p.m.

every day but Saturday

Hours:

Monday - Thursday: 11:00 a.m. - 10:00 p.m.

Friday - Saturday: 11:00 a.m. - 11:00 p.m.

Sunday: 11:30 a.m. - 10:00 p.m.

EVERYTHING OLD IS NEW AGAIN.

Falls City

Pharmacy & Medical Equipment

RPB: Howard/Subbu

402-245-2029 Or Toll Free: 866-223-1504

120 E. 18th St. • Falls City, NE

pharmacyumav@gmail.com

Classifieds **GET THE JOB DONE!**

Buy • Sell • Trade • Rent
Hire • Thank You/Remembering • Legal Services

Call The Mound City News To Place Your Ad • 660-442-5423

MISCELLANEOUS

HOWARD'S GUN REPAIR- 12315 Hwy. 59, Craig, MO, 64437. 660-683-9401. 17/tfc

RAFTER CROSS VETERINARY SERVICES- In Mound City, Dr. Roy Wilson. 660-442-3101. 44/tfc

TREE SERVICES- Tree trimming, tree removal, quality work, senior discount, priced right, free estimates. Contact Rod Burke at 660-253-0121. 4/4tp

COMMUNITY HOSPITAL-FAIRFAX, MO- Is now accepting registrations for the CommuniTEE Golf Benefit August 23 & 24 in Mound City, MO. All proceeds benefit the purchase of an anesthesia machine for the surgery department. To register, call 660-686-2317 or find more details at www.FairfaxMed.com. 4/1tc

GREG'S JEWELRY - Located at 307 E. 5th St., in Mound City, MO, offers period jewelry, August's birthstone. Call 660-442-3739 for all your jewelry needs. 4/1tc

EMU OIL- Arthritis and joint pain, burns and sunburns, aging skin, cuts and abrasions. Hand lotion. G & L Enterprises. Call 816-387-7332 or 660-442-5688. 40/tfc

FREE PALLET AND END ROLLS- At the Holt County Publishing building north of Mound City on Hwy. 59. 39/tfc

MOUND CITY FARMERS' MARKET- Friday afternoon, 3:30-5:30 p.m., east of McIntire Building Center in Mound City. Fresh picked produce, baked goods, homemade jam. 660-442-0124. 4/4tp

HELP WANTED

HELP WANTED

Full-Time Clinic Manager – Northwest Health Services, Mound City, MO

Highly motivated, strong customer service skills required. A degree in nursing, business-related arena or significant pertinent management experience in a dynamic environment is preferred. Salaried position, full benefits' package, no shifts. Send resume and cover letter to Northwest Health Services, PO Box 8612, St. Joseph, MO 64508, online www.nwhealth-services.org or fax 816-232-2696. Northwest Health Services does not hire users of tobacco in any form.



EOE

COMPUTER GRAPHIC DESIGNER FULL-TIME

Must have training or significant experience, preferably with CorelDraw or Illustrator.

Call 402-873-5864 or stop by Andrew Monument Works
1022 Central, Nebraska City

Do you have a knack for developing relationships or teaching others?
Do you like to "sell" but hate a high pressure environment?

Local NW MO Software Co. seeks a **Sales/Marketing Coordinator** to develop new customer relationships and market EMS software.

Overnight travel required. Customer service, sales, or marketing experience is a plus.

View details and apply at www.sem97.com/jobs

HELP WANTED

Part-Time Bank Teller Positions Available
Seeking qualified candidates who are self starters, possess a positive attitude and have strong computer skills. Competitive wages.

Send resume with references to
PO Box 116, Mound City, MO 64470.
No phone calls please. EOE

REAL ESTATE

Kathi Clement Realty
www.kathiclementrealty.com
514 B State St. • Mound City, MO 64470
660-442-6500 • Cell: 816-387-3018
kathiclement@yahoo.com
Kathi Clement, Broker

Randy Patterson BROKER • REALTOR

816-803-3951 • E-mail: realtyman@yahoo.com



McChristy Realty & Auction LLC

www.ucstjoe.com

Call Us for Details - 660-935-2260

FOR SALE

FOR SALE- New picnic tables. Scheib Drainage, Oregon, MO, 660-446-2343. 4/1tc

FOR SALE- 2012 Chevy Cruze LT, white, 19,000 miles, one owner, \$15,900. Call 816-261-6684 or 660-442-5275. 4/1tp

ENTERPRISE REALTY

Jim Loucks, Sales Agent
816-390-2749
Office 877-669-7653
www.entrealty.com

LAND FOR SALE

Brad Pankau's Home & Farm Repair

Roofing, siding, interior/exterior painting, decks, gutter installation & cleaning, electrical & plumbing, drywall & interior remodeling, tree trimming & removal, etc.

BARN & IMPLEMENT SHED REPAIR!

No job is too small! ~ Fully Insured

Call 660-442-3354, 660-254-0156, or 660-442-6343.

Johnson Heating and Cooling
Casey Johnson, Owner
660-442-6354

Licensed and Insured
Specializing with Trane and Heil models

WANTED

WANTED- Babysitting job. Have experience. Call Emily Jones at 660-442-3892 (home) or 660-853-0187 (cell). 4/1tc

HELP WANTED

PANTHER PIZZERIA IN MOUND CITY- Needs day shift and weekend help. If interested, please call 913-915-2724. 4/1tc

HELP WANTED

BARTENDER/COOK POSITIONS
Day & Evening Shifts Available
Call 660-442-3411 or apply within.

Prop In Bar & Grill
Big Lake, MO

Falls City Mercantile

223 West 8th St., Falls City, NE

402-245-2716

Complete Quality Food Service, Wholesale Supplier

fallscitymercantile.com

AUTO REPAIR

For your auto repair needs, contact **Richard Long** at **Show Me Motors** Forest City, MO
660-446-2910

BUILDING MATERIALS

ASSORTED STEEL BUILDINGS- Value discounts as much as 30%. Erection information available. Source #18X. 1-800-964-8335. 1/4tp

THANK YOU/REMEMBERING

A big thank you to my family for the 100th birthday party and for all those that attended. Thanks for the money, gifts, cards, flowers and a special thank you to the Missouri House of Representatives for the resolution framed certificate.

Thanks to everybody,
Faye Smith

CLASSIFIED ADVERTISING
CALL 660-442-5423

CLASSIFIED ADVERTISING
CALL 660-442-5423

The Mound City boys who participated in the Maryville Parks & Recreation League, and their parents, would like to send a huge thank you to Ryan and Sarah Osburn for taking their time to coach our sons this summer. Their compassion and generosity are truly appreciated.

The family of Hilda Slemple would like to thank everyone for their expressions of sympathy, food, cards, flowers and donations to the Holt County Cancer Fund. Also, we would like to thank Scott Jordan and Chamberlain Funeral Home for their services.

GORDON AUTOBODY

QUALITY COLLISION REPAIR

110 E. 5th St., Mound City, MO 64470

PHONE: (660) 442-3400

FAX: (660) 442-5511

HOURS: MONDAY - FRIDAY 8-5

SATURDAYS BY APPOINTMENT

TIMBERVIEW ROOFING

Chris Clement

Call:

816-390-3002 (Cell)

660-935-2219 (Office)

660-652-3033 (Home)

TREE SERVICE

- Tree Trimming
- Tree Removal

CONTACT ROD BURKE

660-253-0121

Fairfax, Missouri

~ FREE ESTIMATES ~

Double D Towing LLC

24 HOURS/DAY - 7 DAYS/WEEK

Mound City, MO

660-253-2432 (Cell)

660-442-0162

www.doubledtowingllc.com

Dale Heming, Dustin Heming, Kelly Graves



Brian A. Tubbs

Phone: 660-442-5989
Fax: 660-442-3574



Attorney At Law

tubbslaw@centurylink.net

The Law Office of Brian Tubbs LLC

Call for appointments

222 State Street • Mound City, MO 64470



NAUMAN CONSTRUCTION & CABINET SHOP, INC.
GENERAL CONTRACTORS

*New Construction, Remodeling, Cabinets.
Granite & Solid Surface Countertops*

307 State Street • Mound City, MO 64470

Shop: 660-442-5290

Hugh: 816-383-3001

Tracy: 816-596-7159

Website and e-mail:

www.naumanconstruction.com

tracy@naumanconstruction.com

CONSIGN NOW FREDERICKS' CONSIGNMENT AUCTION

Falls City, NE
Saturday, Sept. 7

Farm Machinery & Misc. Storage Available

REMINDER -

Deadline for sale bill is
Wednesday, August 14

Trucking Available

To Consign Call:

Leon - 402-245-3762

Steve - 402-245-3227

www.frederickauction.com



MoDOT digs out ditch for better drainage

The Missouri Department of Transportation- Started digging out the ditches on Highway 59, in front of Holt County Publishing in Mound City, MO, on Tuesday, July 30, so the ditches will drain. Mound City received .68 inches of rain Monday, July 29, and also received .48 inches of rain early Friday morning, July 19.



The Missouri Department of Transportation crew- Fill department dump trucks with mud that was dug out of the ditches on Highway 59 in front of the Holt County Publishing print shop on Tuesday, July 30, in Mound City, MO, for better drainage. Mud plugged the tube on both ends therefore no water was draining through the tube.



A crew member of the Missouri Department of Transportation- Digs out mud from the ditches on Highway 59 in Mound City, MO, in front of Holt County Publishing on Tuesday morning, July 30. Plugged tubes made it hard for the water to go through.

Beat the Heat

Beat the heat when exercising

By Janet Hackert, Regional Nutrition and Health Education Specialist, University of Missouri Education

Everyone knows that when it comes to strength to do the activities of daily life or to work out as an athlete, if we don't use it, we lose it; but how do people keep up with that movement during the hot days of summer and avoid illness due to the heat? The first step is understanding how excess heat can cause problems and how to beat the heat when exercising.

According to Dr. Steve Ball, Associate Professor of Nutrition and Exercise Physiology at the University of Missouri (MU), "during exercise, body temperature begins to rise as it converts the chemical energy from food into mechanical energy necessary for movement." The key is to keep up with the fluid loss associated with exercise before, during and after activity.

The human body is designed to cool itself. When a person exercises, perspiration forms on the skin. This surface liquid then evaporates, cooling the skin, which cools the blood circulating past it, and subsequently cools the body. Adequate water in the cells is needed for this to work efficiently.

When the air temperature is high, a person perspires profusely, losing a lot of water. If a person doesn't replenish the body's fluids, dehydration can occur which raises the body's temperature even higher, and the body cannot cool itself and illness can occur.

There are three progressive stages to heat illness: heat cramps, heat exhaustion and heat stroke. Heat cramps occur when muscles cramp during or after exercising. Rubbing down the muscles and replenishing fluids can alleviate them.

Heat exhaustion is more serious and involves excessive sweating, cold clammy skin, dizziness, change in pulse, shallow breathing,

nausea, and/or headaches. When this happens, stop exercising, find a cooler place in the shade or air conditioned room and drink lots of fluids. Medical attention may be needed if severe enough.

Heat stroke is the most severe stage of heat illness and is a medical emergency. The body's natural cooling system shuts down and the body no longer perspires. Without this, the pulse becomes rapid, breathing is difficult and body temperature may rise to 106°F. Cool the person down immediately with whatever it takes- ice packs, a cold bath or hose them down. Prevent heat illness by choosing a cooler time or place to exercise and drink plenty of fluids.

For information, contact Janet Hackert, Regional Nutrition Specialist, at 660-425-6434 and ask for Exercising in the Heat GH1900 or HackertJ@missouri.edu or contact the MU Extension office. The website is also a good source of information and anyone can download the guide at <http://extension.missouri.edu>.



FOR SALE - STEEL DOCK PLATE
6'X2 1/2' • 10,000 LB. CAPACITY • USED JUST A FEW TIMES.
PURCHASED NEW FOR \$725. SELLING FOR \$275.
STOP BY HOLT COUNTY PUBLISHING PRINT SHOP
NORTH OF MOUND CITY OR CALL 660-572-0733.

7TH ANNUAL DAKOTA BRONC SISK
MEMORIAL RODEO
AUGUST 9-10, 2013 • BARNARD, MO



MEAL INCLUDED WITH ADMISSION
ADULTS \$15.00 (includes beverages)
12 IS UNDER \$5.00 5 IS UNDER FREE
MEAL SERVED 6-10:00 PM
CASHED 8:00 BUCK, BUCKIN' PERFORMERS, COUNTRY BAN & BURN
MUSIC BEGINS 6-3:00 PM
MUTTON BUSTIN' - BARNARD, BUCKING - 8:00 PM
RODEO STARTS 9:00 PM
CALL 888 AUGUST 288 - 8:00 PM. THE NIGHT OF PERFORMANCE
888-888-8888 OR 660-425-6434
ENTRY FEE: \$50.00 • \$16 ADMISSION AT GATE
BARNARD BUCKING - BUCKING PERFORMERS
WOMEN'S COUNTRY DANCE WITH MEN'S STEEL WRESTLING

For practice dates and rodeo details go to
WWW.MEMORIALRODEO.COM

Back to School in Style

Tax Free Weekend

August 2nd, 3rd & 4th

Take advantage of the Tax Free Holiday at

Exclusions Apply **EAST HILLS** Exclusions Apply
Make a Connection

East Hills Shopping Center
3702 Frederick Ave. • St. Joseph, MO • 816-279-5667
Located at the corner of Belt Highway & Frederick Avenue
Visit the NEW www.shopeasthills.com

Extended Mall Hours:
Friday: 10 a.m.-9 p.m.
Saturday: 9 a.m.-10 p.m.
Sunday: 11 a.m.-7 p.m.

August

EVENTS' SCHEDULE

SUNDAYS - 3X POINTS 9 a.m.-Noon!
"Hot Seat" Drawings to win \$100 in Promo Cash, hourly 5 p.m.-12 a.m.

MONDAYS - 3X POINTS 9 a.m.-Noon!
"Hot Seat" Drawings to win \$100 in CASH, hourly 3 p.m.-11 p.m.

TUESDAYS - PRIME TIME TUESDAYS!
PRIME TIMERS \$2 OFF LUNCH & DINNER BUFFETS (\$5 & OVER)
"Hot Seat" Drawings to win \$100 in Promo Cash, hourly 1 p.m.-8 p.m.

WEDNESDAYS - "SPIN THE WHEEL"
"Hot Seat" Drawings to win \$100 in Promo Cash, hourly 2 p.m.-5 p.m.
"Spin the Wheel" - Drawings to win up to \$200 in Promo Cash, hourly 6 p.m.-10 p.m.

THURSDAYS - 3X Points 9 a.m.-Noon!
Drawings to win up to \$100 in Promo Cash, hourly 4 p.m.-11 p.m.

FRIDAYS - "DROP THE PUCK"
Drawings of your choice, hourly 12 p.m.-5 p.m. & 7 p.m.-2 a.m.
You pick "Drop the Puck", "Spin the Wheel", or "Whirl Wind Machine".
Whichever you pick, you can win up to \$200 in Promo Cash or CASH.

SATURDAYS - "SPIN THE WHEEL"
"Spin the Wheel" Drawings, win up to \$200 Promo Cash, hourly 2 p.m.-8 p.m.,
or CASH, hourly 9 p.m. & 2 a.m.
Winners will also get entries to the Cash Frenzy for \$10,000 on October 5th
(\$5,000 at 1 a.m. & \$5,000 at 2 a.m.)

\$25,000 SUMMER CASH FRENZY

Every Saturday from August 3rd through September 28th, there will be hourly drawings from 9 p.m.-2 a.m. to win \$200 Cash plus an entry into the \$10,000 Summer Cash Frenzy Giveaway on October 5th. The winner will be given a ticket to full out and drop into the provided box. There will also be drawings totaling an additional \$15,000 starting at 4 p.m. on Saturday, October 5. Winners of these additional drawings will also qualify for the (2) \$5,000 drawings. Please see players' club for more details. One ticket per customer per day.
You may win more than once on Saturday, October 5th. Must be present to win.

5 Miles West of White Cloud, KS • Toll Free 877-652-6115
Casino Hours: Sun.-Thurs. - 9 a.m. - 1 a.m.
Fri. & Sat. - 9 a.m. - 3 a.m.
Find us on Facebook for great offers!

www.casinowhitecloud.org
Toll Free 877-652-6115 • www.facebook.com/casinowhitecloud

<p>2012 FORD FUSION SE 7,500 Miles, 4-CYL., Sync, Automatic \$17,950</p> 	<p>2014 FORD FOCUS SE Automatic, Keyless Entry, 40 MPG \$19,020</p> 	<p>2013 FORD FUSION S Automatic, Power Windows & Locks, 38 MPG \$20,395</p> 	<p>2012 CHEVROLET CAMARO SS 1,900 miles, RS pkg., 20" wheels, one owner trade in! \$38,500</p> 
---	---	---	--

Ford HULLMANS FORD Falls City, NE • 402-245-4413
www.hullmansford.com