

Serving all of Holt County, Missouri, since 1879. Home of Squaw Creek National Wildlife Refuge & Big Lake State Park.

THURSDAY • SEPTEMBER 18 • 2014

INSIDE

THIS WEEK

Mound City Lumber opens new building • Page 16

State Theater starts new season • Page 2

Panther football falls to 3-1
• Page 13

Holt County Autumn Festival competition results • Page 6-7

Be the next winner at Mound City Lumber

Mound City Lumber, located at 108 W. 7th St. in Mound City, is giving away a \$1,000 shopping spree. Customers may stop by the store between 7:30 a.m. and 5 p.m. Monday through Friday from or between 7:30 a.m. and 4 p.m. Saturday to sign up. One entry per household will be allowed from now through Tuesday, Sept. 30.

Northwest Health Services to host baby shower

Northwest Health Services' (NHS) Mound City Medical and Dental Clinics will be hosting a community-wide baby shower and open house from 3 p.m. to 5 p.m. on Thursday, Sept. 18.

Guests are encouraged to bring baby items, such as diapers, food or formula, which will be donated to the Mound City Ministerial Alliance.

NHS will also be introducing Dr. Brown-Keebler, physician, and Dr. Samantha Sutton, dentist, at the event.

For more information, contact the Mound City Medical and Dental Clinics at (660) 442-5464 or visit <http://www.nwhealth-services.org>.

River of Hope to dedicate new worship space

River of Hope Fellowship Church will be dedicating its new building, located at Hwy. 159 and I-29 near the Squaw Creek Travel Plaza, on Sunday, Sept. 21.

The worship service starts at 10:30 a.m., and an open house will take place from 2 p.m. to 4 p.m.; all are invited to attend.



Mound City Lumber re-opens in its new building on Sept. 15

From left to right, Gary Wheeler, Mound City Mayor Chris Krueger, Monty Tunks and Mary Ann Waggoner - Pose in front of the new Mound City Lumber building on Monday, Sept. 15. Tunks and Krueger hold a plaque recognizing the store's investment in the Mound City community. Tunks and his brother, Marty, both of King City Lumber, are the new owners of Mound City Lumber and were the force behind the building expansion.

Continued to page 16

Storm barrels through area, leaves damage

At Nodaway-Holt R-7, the morning of Wednesday, Sept. 10, was focused on a clean-up effort.

The night before, a torrential storm rolled through the area, with rainfall totaling 5.25 inches in the Mound City area, according to the National Weather Service.

The storm caused significant damage to Nodaway-Holt's school; the band room and vocational agriculture building flooded, ceiling tiles and insulation were knocked down, and water damage was evident on the walls of several classrooms.

"We're looking at December and later in the spring [for repairs]," Nodaway-Holt Superintendent Karma Coleman said. "Anywhere from four to six months."

Classes were canceled the morning of Sept. 10, but Nodaway-Holt wasn't the only school affected by the storm. Craig R-3 delayed classes for two hours, giving the school district plenty of time to check back roads for flooding.

Craig Superintendent Mike Leach said that students' safety is a top priority and delaying classes was a better option than having school buses run alternate routes.

Leach added that if the school buses stayed on black-top roads, the alternative to the delay, then about half of Craig students would not have been able to attend class that day.

In addition to damage to buildings, the storm caused flash flooding in Holt County. Sections of Routes N and C closed, and the Missouri State Highway Patrol shut down I-29 from the 86-88 mile markers due to water over the road.

The Missouri Department of Conservation also reported that it rescued eight people from vehicles submerged on or near I-29 early Wednesday. Rescuers used boats, a motorized front loader and the front of a road grader to carry the drivers to safety. For more information, see "MDC agents help rescue motorists stranded in flash flood" elsewhere in this issue.

Finally, there were several power outages in the area. Kansas City Power and Light (KCP&L) reported that a total of 1,655 customers dealt with a loss of electricity. Power first went out at 6:01 p.m. on Tuesday night and was eventually restored by 1:08 a.m. early Wednesday morning in the Mound City and Holt County area.

Photos on page 8

The Great Northwest Wine Fest 2014 brings new vendors to town

The unofficial theme of the 2014 Great Northwest Wine Fest, which will take place from noon to 8 p.m. on Saturday, Sept. 27, at Griffith Park in Mound City, Mo., is "more": more wine, more vendors, more entertainment, more people.

"We have eight wineries this year," Wine Fest Coordinator Marilyn Alldredge said, "[and] a new one, Weston Wine Company."

Weston Wine Company, based in Weston, Mo., will be joining Windy

Wine Company of Osborn, Mo.; Ladoga Ridge Winery of Smithville, Mo.; Baltimore Bend Winery of Waverly, Mo.; Riverwood Winery of Weston and Rushville, Mo.; Jowler Creek Winery of Platte City, Mo.; Pirtle Winery of Weston; and Tipple Hill of Easton, Mo. Each winery has its own grape varieties and specialty wines, and some, according to Alldredge, use Mound City grapes.

"There are [also] a lot of new artisan vendors," Alldredge said. "It's some-

thing new and different."

Items for purchase range from baked goods and fall decorations to candles, photography, artwork, pumpkins and health products.

In addition to sampling wines and shopping, attendees may also take advantage of a variety of food vendors, including one new booth.

"There is an additional food booth," Alldredge said. "The Savannah Knights of Columbus will be grilling. It'll be something pleasing."

Also on hand will be barbecue from the White Rose Cafe; Mexican treats from the Enchilada Lady; gourmet soups and desserts from Wabash Junction; and cheese plates, homemade breads and grape pies from other vendors. Food Country Catering will be offering a sit-down dinner from 4 p.m. to 7:30 p.m. at the shelter house for \$11, and The Klub will provide a full bar, including domestic beers.

Rounding out the afternoon is a lineup of area musicians, including Paul

Continued to page 9



Craig R-3 2014 Homecoming King & Queen

Kyree Howell, left, and Hailey Bomar, right - Stand as the newly crowned Craig R-3 2014 Homecoming King and Queen. The coronation was held before the Mound City vs. South Nodaway football game on Friday, Sept. 12, in Mound City. Howell is the son of Kevin Davis, and Bomar is the daughter of Kevin and Annie Bomar.

For more pictures of Mound City homecoming activities, please see page 9



Mound City R-2 2014 Homecoming King & Queen

Mound City R-2 2014 Homecoming Queen and King Lily Forehand, back left, and Colton Smith, back right - Pose with Homecoming attendants Cade Gillenwater, front left, and Maggie Osburn, front right. The coronation was held before the Mound City home football game against South Nodaway on Friday, Sept. 12. Forehand is the daughter of Karl and Laura Forehand, Smith is the son of Tim and Pam Smith, Gillenwater is the son of Shane and Kristin Gillenwater, and Osburn is the daughter of Ryan and Sarah Osburn.



Nodaway-Holt R-7 2014 Homecoming King & Queen

Cody Schniedermeier, left, and Bailea Plummer, right - Pose as the Nodaway-Holt R-7 2014 Homecoming King and Queen. The coronation was held before the Nodaway-Holt vs. East Atchison football game on Friday, Sept. 12, in Graham, Mo. Schniedermeier is the son of Steve and Sherry Schniedermeier, and Plummer is the daughter of Jarrod and Adrean Plummer.

Informal

News Beat

Investments in our community's future

For a community the size of Mound City, we are very fortunate to have the businesses we have. Over the past couple of weeks, two businesses in town have completed expansions to renovated/new facilities. Hiawatha Implement had a grand opening celebration of its newly remodeled facility, which is very impressive. Downtown, Mound City Lumber opened up its new store, which also is a huge asset to our community. Both new expansions are great, and my hat's off to the owners and employees at both places. Mound City is lucky to have the established business community that is here, and it's great to see new investments like these recent expansions happen to ensure a strong future. Keep up the good work.

Mound City dodged a bullet with last Tuesday night's storm. The few downed trees and limbs about town as well as the power line pole that was down near our Holt County Publishing web printing facility don't seem too bad compared to the damage at the Nodaway-Holt school and in the Graham and Maitland area. Also, our neighbors to the north in Tarkio and Atchison County, Mo., suffered a tremendous amount of tree, wind and water damage along with many Tarkio residents without power for as long as 24 hours. All of the rain and stormy weather is somewhat unusual for this time of year right before harvest begins.

- Adam



Paula, left, and Billy Stone, right - Pose in front of the soon-to-be-filled menu at their new business, "Paula's Cafe," in Craig, Mo.

Craig couple to open Paula's Cafe

Paula and Billy Stone of Craig, Mo., are bringing warm meals, hot coffee and a friendly atmosphere to town.

"Paula's Cafe," which will open for business on Monday, Sept. 22, is taking the place of what was the Hornets Nest Cafe, located next door to Craig City Hall.

The new cafe will offer a daily lunch special (with the exception of "Taco Tuesday"), homemade pizzas, grilled items and free in-town delivery. Coffee drinkers will also have unlimited refills.

Paula's Cafe will be open Monday through Friday, starting at 9 a.m. On Monday, Wednesday and Friday, it will close at 2 p.m.; on Tuesdays and Thursdays, the cafe will close at 8 p.m.

For more information or to place an order, call Paula's Cafe at (660) 683-5344.

State Theater opens curtains for new season

The State Theater in Mound City, Mo., will launch its 2014-2015 performance season this Saturday, Sept. 20, and the selection of shows promises to be entertaining.

"What a strong season we have lined up," State Theater board member Mari Ferguson said.

Please find a detailed schedule below:

Saturday, Sept. 20: Jeremiah Johnson Band, Blues Museum Exhibit

Jeremiah Johnson, a native of St. Louis, Mo., and his bandmates, Jeff Girardier, Jim Rosse, Stuart Williams and Brad Williams, are award-winning blues musicians; Johnson was the first-place finalist in the Houston (Texas) Regional Blues Challenges in 2004, 2005 and 2006, and the band won the 2011 St. Louis Blues Society Challenge.

The band also brings a collection of blues memorabilia, which will be on display before and after the 7 p.m. show.

The Klub, Quackers and Terri's Place, all in Mound City, are offering a special discount to patrons who bring a show ticket or ticket stub from the concert.

Saturday, Oct. 25: Blackberry Winter

West Plains, Mo., folk singer, storyteller and Blackberry Winter headliner Marideth Sisco first met "Winter's Bone" producer Debra Granik when Granik was scouting locations for the film. Before long, Sisco was gathering fellow musicians to provide the memorable folk and mountain music soundtrack to the Golden Globe and Oscar-nominated film. Currently, she and her band are traveling across the Show-Me State to entertain audiences with the music that brought the movie to life.

Saturday, Dec. 6: Christmas on State Street

State Street in Mound City will undergo a transformation to a winter wonderland come December; decorations will go up, and local businesses will create holiday-themed artistic displays in their windows.

Storyteller Will Stuck will also return for another performance, and Mr. and Mrs. Claus will visit after Stuck's show.

"We are so excited about Christmas on State Street," Ferguson said.

The event will be free for the community.

Saturday, Dec. 13: The Bretts: A Brett Family Christmas (Dolores Ideker Memorial Christmas Show)

When the Brett family first started playing in Branson, Mo., it seemed like a golden, if short-lived opportunity. Sixteen years later, however, Tom, Andrea, Brydon, Briahna and Garon have established themselves as the go-to entertainers at Dick Clark's American Bandstand Theater.

Now, the Bretts are bringing their cutting-edge but family-friendly show to Mound City.

January: Community Art Class

For those inclined towards art, the State Theater will be offering a four-week class that focuses on painting, drawing and pottery. The class, which does come with a small fee, is open to adult artists of all skill levels.

Sunday, March 8: The Elders

Well-known band The Elders has a unique take on music, fusing Celtic folk with American rock and infusing the memorable rhythms and harmonies with political and cultural lyrics.

"[People] are amazed that The Elders are coming here," Ferguson said.

April: Community Musical, "The Addams Family"

They're creepy and they're kooky, but the Addams family makes for great musical entertainment.

With a professional director on board, "The Addams Family" will feature the talents of local singers and performers; audition dates will be announced in the spring.

Sunday, May 3: Hypnotist Rick Bultez and Comedian John Pinney

Bultez, a certified hypnotist with the National Guild of Hypnotists, brings comedy, creativity and power to the stage with his hypnotic show.

"I am just amazed at how [hypnotism] works," Ferguson said.

Complementing Bultez's performance is comedian Pinney, who traded professional boxing for the stage. As he says, after being hit on the head for so many years, he realized his way of thinking was different; so, he became a comedian.

Monday, June 1, through Friday, June 12, 9 a.m. to 11 a.m.: Theater Camp

Theater camp has become so popular, Ferguson said, that it will be offered again this summer for budding thespians aged 8 to 18. At the conclusion of the two-week camp, the campers will show off their acting abilities in a show.

Individual tickets for the shows listed above cost \$15 for adults and \$5 for children age 18 and under. Season tickets are \$75. Tickets may be purchased at the door the day of a performance or by calling (660) 442-5909. For more information, visit www.statetheater.org.

City Council approves truck purchase, covers pool deficit

The Mound City Board of Aldermen met Tuesday, Sept. 9, to discuss several measures, including the approval of funds for a new pickup truck for the Water Department.

The city accepted two bids for a pickup but approved the purchase of a 2015 Dodge 2500 4X4 pickup from Laukemper Dodge for \$17,500 with a trade in of the department's current 2005 Chevrolet pickup. The board also approved the purchase of a utility bed from Palfleet Truck Equipment for \$7,714. The pickup has been ordered and should arrive in 6 weeks.

In other vehicle business, the police department's 2010 Impala's fuse box, cooling fan and wiring harness were recently repaired at a cost of more than \$1,500. Police Chief John Panning reported another agency is interested in purchasing the Impala, so the department is accepting bids to purchase a new patrol vehicle. The budget for the new vehicle is \$34,000.

The board also approved the emergency purchase of a new pump for the lift station for \$8,000. The second pump will have its bearings replaced.

McFadden Construction has begun patching streets, and city workers will continue when the weather permits. Mayor Chris Krueger also reported that Steve Binder purchased the Bobcat sweeper for \$500.

Funds were allocated from the parks budget to cover a deficit in the pool fund. The deficit was

totalled at \$31,600 due to repairs made to the facility. The new roof and concrete at the entrance cost \$24,000, and an additional \$3,600 was spent on new exterior lights and ceiling fans in the bathhouse. The bathhouse still needs plumbing repairs, but the board has decided to hold off due to limited funds.

Following the majority of the departmental reports, the mayor opened bids for the weeding and seeding of city parks. Custom Waterworks bid:

- Griffith Park: Fertilizer and broadleaf weed control, plus aerating and overseeding, \$1,800
- Chautauqua Park: Fertilizer and broadleaf weed control, plus aerating and overseeding, \$2,100
- City Hall Park: Fertilizer and broadleaf weed control, plus aerating and overseeding, \$1,700
- T Cozz Mowing LLC bid:
 - Griffith Park: Overseed, fertilizer and broadleaf weed control, \$2,295
 - Chautauqua Park: Overseed, fertilizer and broadleaf weed control, \$1,660
 - City Hall Park: Overseed, fertilizer and broadleaf weed control, \$1,060

The board voted to accept the bid from T Cozz Mowing LLC for lawn care at City Hall Park for \$1,060. Members also voted to accept the Custom Waterworks bid of \$1,800 for Griffith Park lawn care.

In new business, the board

agreed to have Alderman Kristine Gibson check the status of the Safe Routes to School grant to see if it is still funded at 100 percent. If so, she will work on an application, due Friday, Nov. 14, for the replacement of the sidewalk along Nebraska Street from the school to the football field.

Next, the board approved Bill No. 9-9-2014: "Establish Procedures for Financial Disclosure" to disclose potential conflicts of interests and substantial interests for certain municipal officials. The bill was duly numbered Ordinance #1244.

City Attorney Brian Tubbs reported that progress is being made to clean up the property at 106 E. 7th St. The property owner stated that some of the debris tested positive for minimal asbestos content, and the report is being forwarded to the Department of Natural Resources for approval to proceed with removal.

In administrative matters, Tubbs discussed delinquent merchant licenses. One license has been issued since the last meeting, and more should be taken care of this week. City Clerk Patsy Smith reported that a Department of Revenue revocation notice received several months ago should be resolved by Friday, Sept. 12. If appropriate documents are not received by Monday, Sept. 15, then further action will be taken.

The board then shifted to city stickers. Currently, city stickers annually generate \$3,800, which goes to the Street fund. However,

Chief Panning must devote considerable time to enforcing the ordinance; initially, there were more than 100 delinquencies that Panning had to notify. The board decided to wait another year to see if the process will smooth out.

Next, Smith discussed the General Code's proposal for online access to the City Code. The Code is currently on the city's website as pdf files of each chapter, but the online service would provide for enhanced searching, print and email functions. As the cost for the service is \$695 per year, the board declined to purchase it.

Finally, Smith noted that a notice was received that the CenturyLink class action settlement suit is scheduled for a final hearing in December to approve the agreement. The City's anticipated settlement amount is \$30,801, and the agreement would release the taxes paid under protest, as well; those taxes amount to \$4,761. The Missouri Municipal League has provided all of the attorneys and work on the case. The city agreed to include a 5 percent assignment of the payment to the league.

The next board meeting will be Thursday, Oct. 9, at 7 p.m.

Mound City NEWS Published and Printed in Mound City, Missouri

Established 1879 (USPS 364-920)

Published weekly on Thursdays and entered as periodical publication at the Post Office in Mound City, Missouri 64470.

POSTMASTER - Send changes of address to: Mound City News, PO Box 175 • Mound City, MO 64470

511 State Street, PO Box 175 • Mound City, MO 64470 (660) 442-5423 • Fax (660) 442-5423
E-mail: moundcitynews@socket.net www.moundcitynews.com

Adam Johnson
Owner/Publisher

Jessica Lindsay, Office Manager - Pam Kent, Advertising C.J. Trent-Gurbuz, News Editor - Joy Johnson, Proofreading Laura Sharp, Photographer

Jennifer Pardue, Benjamin Flint, Pete Webster, Will Johnson, Print Shop

Member Missouri Press Association

SUBSCRIPTION INFORMATION
\$33 PER YEAR
Holt, Nodaway, Andrew, and Atchison Counties.
\$38 PER YEAR
Elsewhere In Missouri and All Other States.
All Subscriptions Are Due In January

Copies available each week at our office and at:
Craig Country Store, Craig;
Lakeshore Grill, Prop-In, Big Lake;
Country Corner and Price's Grocery, Oregon;
The Smokehouse, Graham; Poor Boys Kwik Stop, Maitland;
Mound City Thriftway, Kwik Zone, George's Total,
Squaw Creek Diner & I-29 Travel Plaza in Mound City.

OPEN

The New Store Next Door is NOW OPEN!

SAME HOURS, SAME GREAT SERVICE

MOUND CITY LUMBER

Hours: Monday-Friday: 7:30 a.m.-5:00 p.m. • Saturday: 7:30 a.m.-4:00 p.m.
108 W. 7th St. • Mound City, MO • 660-442-5416

Chamberlain Funeral Home & Monuments

1705 Ridge Drive
Mound City, MO
442-5300

ATTENTION: 12-STEP DRUG AND ALCOHOL RECOVERY PROGRAM & AL-ANON FAMILY GROUP

AT RIVER OF HOPE FELLOWSHIP
Hwy. 159 & I-29
MOUND CITY, MO

EVERY WEDNESDAY 7:00-8:00 P.M.

FOR INFORMATION CALL
660-442-6305; 660-442-6085
OR 660-541-2501.

OBITUARIES

Donald C. Gilmore

Donald C. Gilmore was born on July 8, 1926, in Friend, Neb., to Dell C. and Thelma (Wilkes) Gilmore.

Gilmore served in the U.S. Navy during World War II from 1943 until 1947. He worked as a lineman and troubleshooter for Alltel Telephone Company, retiring to Big Lake, Mo., from Nebraska in 1985. On Nov. 9, 1996, Gilmore married Glenna Gayle (Petty) Crenshaw at the Big Lake Baptist Church.

Gilmore passed away at the age of 88 on Monday, Sept. 8, 2014, at a Mound City, Mo., healthcare facility.

Gilmore was preceded in death by his parents; brother, Dell Gilmore; sisters, Shirley and Frances Gilmore; and nephew, David Petty.

Survivors include Gilmore's wife, Glenna, of their Big Lake home; sons and daughters-in-law, Steven and Juli Crenshaw of Big Lake, and Tim and Kate Crenshaw of Kansas City, Mo.; daughter and son-in-law, Lisa and Mark Fothergill, St. Joseph,

Mo.; four grandchildren and their spouses, Jeremy and Betty Hoffman, Courtney and Levi Roscoe, Parker Joslin and Zach Crenshaw; four great-granddaughters, Baylee and Brylee Hoffman and Halle and Audrina Roscoe; nephews, Randy Mohr and Jamie Barnes; and niece, Karen Longacre.

Gilmore was a member of the Eagles Lodge 968 in Nebraska City, Neb., the Masonic Lodge and Shriners. He served as mayor of Big Lake. Gilmore enjoyed fishing and boating. He and Glenna wintered in Harlingen, Texas.

Services were held on Friday, Sept. 12, 2014, at 11 a.m. at the Chamberlain Funeral Home in Mound City. A private family inurnment will be held at a later date at the New Liberty Cemetery in Mound City. Memorials may be directed to the Big Lake Baptist Church or the American Cancer Society. Online condolences may be left at www.chamberlainfuneral.com.

Canna Sue (Graves) Pasch

Canna Sue (Graves) Pasch, 60, died Thursday, Sept. 11, 2014. Pasch was born Feb. 10, 1954, in Fairfax, Mo., to Varick and Mary Graves. She graduated from Fairfax High School in 1972. In 1976 she married Eldon Pasch and raised their family in St. Joseph, Mo. Pasch earned an associate degree in early childhood education and was an educator for Head Start for more than 25 years. Pasch's heart and home were always open to all. She has left behind a beautiful memory that will always live on.

Pasch is survived by her husband, Eldon; children, Clinton, Erica and Clayton; grandchildren, Ivan, Elijah, Ashton, Madison and Emerson; mother, Mary Graves; siblings, Ann (Keith) Wensel, Guy (Melinda) Graves, and Kelly (Cheryl) Graves. Pasch is preceded



in death by her father, Varick Graves.

Services were held Tuesday, Sept. 16, at the Fairfax (Mo.) Baptist Church. Interment was at Pleasant Ridge Cemetery in Fairfax. Memorials may be directed to the Heartland Regional Medical Center, Oncology Unit.

Squaw Creek work days coming up

Squaw Creek National Wildlife Refuge, located near Mound City, Mo., will have two workdays on Saturday, Sept. 20.

The first, originally scheduled for Saturday, Sept. 13, will be the Volunteer Habitat Restoration Workday, from 9 a.m. to 4 p.m.

The second, the refuge-wide volunteer workday, which coincides with National Public Lands

Day, is scheduled from 9 a.m. to 3 p.m.

Lunch will be provided to all volunteers.

For more information, contact Wildlife Refuge Specialist Corey Kudrna at corey_kudrna@fws.gov or (660) 442-3187 ext. 4 during office business hours, 7:30 a.m. to 4 p.m., Monday through Friday.

Mound City R-2 looking for sports stats

Mound City R-2 is looking for any and all statistics and records for football prior to the 2006-2007 season. The school is also interested in volleyball statistics and records from all seasons.

Those with information may email Derek Petty at derek.petty@mndcty.k12.mo.us or mail the school, located at 708 Nebraska St., Mound City, MO, 64470.

Nutrition site news

Volunteers at the Nutrition Site in Mound City during the week of Sept. 8 were: Walt and Pat Groves, Bill and Donna Golden, Ardis Davis, Carolyn Roberts, Betty Russell, Lela Boyd, Dee Ann Heck, Tracy Jordon, Kim and Fred Kling, Donna and Gary Kurtz, Robert Eggart, Corey and Danielle Gordon, Barb Raether, Richard and Alita Meyer, Wayne and Diane White, Paul Grant and Marilyn Buntz.

Delivering meals the week of Sept. 22, 2014, will be:

Craig - Monday - Walt and Pat Groves, Gene and Bev Miller and Sue Schmidt.

Mound City - Monday and Tuesday - Methodist Church; Wednesday - Mound City Schools; Thursday and Friday - Christian Fellowship Church.

Oregon and Forest City - Monday through Friday - Methodist Church.

The Mound City Nutrition Site recycles cell phones, ink cartridges and aluminum cans for cancer (Helping Hands) in two purple cans by the front and back doors. There are also drop boxes for box tops for the school and donations to the food pantry as well as pop tabs for the Ronald McDonald House. The site is always in need of grocery sacks.

The September product of the month is brown sugar. The

drawing will be held on Tuesday, September 30.

The Mound City Nutrition Site will be needing volunteers to help prepare meals Thursday, Sept. 25, through Friday, Oct. 3. Please call to help out.

Upcoming activities at the Mound City Nutrition Site are:
Sept. 22 - Exercises at 8:30 a.m.

Sept. 24 - Exercises at 11:30 a.m., National Rehab Celebration.

Sept. 26 - Homemade cinnamon rolls and donuts from 8 a.m. until gone.

If anyone can volunteer with meal delivery, making holiday treats, preparing cinnamon rolls and/or donuts and other items, please call Dee Ann Heck at 660-442-3501.

The upcoming menu at the site is:

Monday, Sept. 22 - Hamburger on bun, baked potato, green beans and fruit cocktail.

Tuesday, Sept. 23 - Potato bar, chili and cheese, broccoli and blueberry muffins.

Wednesday, Sept. 24 - Ham loaf, scalloped potatoes, winter mix and peaches.

Thursday, Sept. 25 - Beef and noodles, mashed potatoes, carrots and mixed fruit.

Friday, Sept. 26 - Chicken and rice, California blend, pickled beets and applesauce.

Curtis Marvin Hayzlett

Curtis Marvin Hayzlett was born on June 14, 1929, to Carl W. and Mady N. (Bomar) Hayzlett.

Hayzlett enjoyed stickers, playing dominos and getting mail. He attended the Nazarene Church.

Hayzlett passed away at the age of 85 on Thursday, Sept. 11, 2014, at a St. Joseph, Mo., hospital.

Preceding Hayzlett in death were his parents; brothers, Carl, Claud and Carol Hayzlett; and sister, Alice L. Noble.

Survivors include his brother, Clyde Melvin Hayzlett; two sisters, Mary F. Plummer of Forest City, Mo., and Mavis F. Mackey of St. Joseph; brother-in-law, Harvey Noble of Louisburg, Kan.; 14 nieces and nephews; and great-nieces and nephews.

Services were held on Monday, Sept. 15, 2014, at 1 p.m. at Chamberlain Funeral Home in Oregon, Mo. Family greeted friends from 11 a.m. until noon. Interment was at Antioch Cemetery in Fillmore, Mo. Online condolences may be left at www.chamberlainfuneral.com.

Northwest Missouri State announces summer graduates

The Office of the Registrar and the Graduate School at Northwest Missouri State University in Maryville, Mo., recently announced the names of students who earned their degrees at the conclusion of the 2014 summer trimester; the graduates from Holt County are:

- William Donovan Haer, Craig, Mo., Bachelor of Science in Recreation: Corporate Recreation and Wellness;
- Ryan R. Crowley, Mound City, Mo., Bachelor of Science in Geographic Information Science: Geographic Emphasis; and
- Kristine Marie Mitchell, Skidmore, Mo., Master of Science in Education: Reading.

Tuesday Club begins new club year

The Tuesday Club in Mound City, Mo., initiated the 2014-2015 club year by having dinner at Frederick Inn in St. Joseph, Mo., on Tuesday, Sept. 9. Members enjoying the meal were Phyllis Parker, Debbie Loucks, Kasey Miles, Kay Sitherwood, Sheri Meadows,

Patty Davis, Judy McIntire, Judith Long, Carly Edwards, Linda Boultinghouse, Susan Laukemper, Linda Creed, Jane Meadows, Jeanne Moore, Leisa Biermann and Barb Heitman.

The program committee passed out program books for the year. Tuesday Club's theme for the new year is "Phenomenal Women: Yesterday, Today, Tomorrow."

The next meeting is Tuesday, Sept. 23, at the home of Sheri Meadows in Mound City. Debbie Loucks will have the program.

Your Full-Service Memorialist Since 1935

- Monuments
- Markers
- Mausoleums
- Plaques
- Lettering
- Cleaning
- Custom Designing

Van Vickle Monuments
1717 Frederick St. Joseph
Toll Free
1-877-232-5882

Mound City Family Medicine
Dustin Carpenter, M.D.
514 State Street, Mound City, MO

Dr. Carpenter is now seeing patients for

- Obstetrics
- Pediatrics
- Comprehensive Health
- Preventative Health
- Geriatrics

(including nursing home visits)
Sliding fee available for those who qualify.

Becky (Foster) Heits, FNP is also seeing patients on Tuesdays at Mound City Family Medicine.

Make your appointment today by calling (660) 442-3181

Dustin Carpenter M.D.
Mound City Family Medicine

Judi Crawford-Long

Holt County's Most Affordable Funeral & Cremation Services

COMPLETE Funeral Service	Cremation as low as
*\$3,995	\$995

**Funeral Package includes Funeral Service, Visitation, 20 gauge Steel Casket, Concrete Vault, Register Book & Memorial Folders.*

Pettijohn & Crawford Family Funeral Service

For me this is more than a business, it's a tradition of family service. For three generations members of the Crawford Family have served Holt County with compassion and dignity. "I am honored as the third generation of my family to serve Mound City and Holt County, following in the footsteps of my grandfather, William Crawford, and my parents Jim and Iris Crawford. Our promise to you is - we will do whatever it takes to serve your family in a personal way."

Area Church Information

BIG LAKE

Big Lake Baptist Church

213 Lake Shore Dr., Craig, MO
Dick Lionberger, Interim Pastor
 Sunday School, 9:30 a.m., Worship Service, 10:30 a.m.

CRAIG

Craig Presbyterian Church

Worship Service, 9:15 a.m. - *Cliff McNair, Pastor*
Sharp's Grove United Methodist Church
 4.5 mi. north of Craig on Hwy. 59 • *Rev. Jeremy Blevins*
 Worship Service, 8:45 a.m.

Craig Community Church of the Nazarene

105 S. Ensworth Street • *Keith Knaak, Pastor*
 Sunday School, 10 a.m., Worship Service, 11 a.m.
 Wed. Night Bible Study, 5:30 p.m., Wed. Kingdom Kids, 3:30-5:00 p.m.,
 Wed. Night Youth Group, 6:30-8:00 p.m.

Church of God

Sunday School, 10:00 a.m., Worship, 11:00 a.m.

FILLMORE

The Lighthouse

Exit 65 on I-29 • *Pastors Tim and Faith Uzzle*
 Sunday Worship: 10 a.m., Thurs. Bible Study: 7 p.m.
 www.fillmorelighthousechurch.org

GRAHAM

Graham Union Church

Sunday School, 9:30 a.m., Morning Worship, 10:30 a.m.
 Evening Service, 6:30 p.m., Wednesday night, 7 p.m.

United Methodist Church

Connie Ury, Pastor
 Sunday School, 10:15 a.m., Worship, 9 a.m.

MAITLAND

First Christian Church

4th and Ash • *Bill Gazaway, Pastor*
 Sunday School, 9:15 a.m., Worship Service, 10 a.m.
 Sunday Night Worship, 7 p.m., Wed., Youth Rallies, 7 p.m.

United Methodist Church

217 S. Maple Avenue • *Connie Ury, Pastor*
 Worship Service, 10:15 a.m.

MOUND CITY

Community of Christ

1410 Nebraska Street • *Theresa Mackey, Pastor* 660-446-2048
 Sunday School, 10 a.m., Worship Service, 11 a.m.

Christian Fellowship

18080 Hwy. 59 • *Jim Brown, Minister*
 Sunday School, 9:30 a.m., Worship, 10:30 a.m.
 Senior High Youth, 7:00 p.m. • www.christian-fellowship.net

Holy Trinity Lutheran Church

1413 Nebraska St. • *Rev. Brian Lemcke*
 Worship Service, 10:30 a.m.
 Bible Class or Sunday School, 9:15 a.m.

First Christian Church

402 E. 5th Street • *Paul Grant, Pastor*
 Sunday School, 9:30 a.m., Worship, 10:30 a.m.
 Wednesdays- Bible Study, 12 p.m.
 www.firstchristianmoundcity.org

Mound City Baptist Church

1308 Savannah Street • *Pastor Nathan Lowe*
 Sunday School, 10:15 a.m., Worship Service, 11:15 a.m.
 Tuesday Bible Study, Larry Brickey, 6:30 p.m.;
 Acteens (K-12 Grades), 4:00 p.m. - 660-853-2089
 Youth Group, 5:00 p.m. - 6:30 p.m.

Mound City United Methodist Church

312 E. 7th St. • *Pastor Jeremy Blevins*
 Sunday School, 9 a.m., Sunday Service, 10 a.m.

New Liberty Baptist Church

The little church with a big heart.
Will Haer, Interim Pastor • County Road 140
 Sunday School, 9:45 a.m., Worship, 10:30 a.m.
 816-596-1152 • 660-683-5692

New Life Apostolic Assembly

U.P.C.I. - 307 E. 6th, Mound City • *Pastor Scott Jordan*
 Worship Service, 11 a.m.
 Life Night Bible Study & Revolution Youth Group
 Thursdays, 6:30 p.m.
 www.newlifeupci.org - 660-442-3441

Benton Church

An 1880s Church in the 21st Century • *Pastor Jim Broker*
 1/2 mile south of Squaw Creek Truck Plaza on Hwy. BB
 Worship, 10:00 a.m., First Sunday of the Month

OREGON

St. Patrick's Catholic Church

303 Grand, Forest City • *Father Peter Ullrich, OSB*
 Pastor and Parish Administrator

Oregon Church of the Nazarene

207 W. George • *Keith Knaak, Pastor*
 Sunday School, 8 a.m., Worship Service, 9 a.m.

New Point Christian Church

24135 Stone Hill Rd. • *Brian Buck, Minister*
 Sunday School, 9:30 a.m., Worship, 10:30 a.m.
 Fellowship Dinner, 4th Sunday of month following church

REGIONAL

River of Hope Fellowship

Hwy. 159 & I-29, Mound City
 Pastor David Showalter - 660-442-6305 • Pastor Will Certain - 816-824-8566
 Sunday School, 9:15 a.m., Worship, 10:30 a.m.
 Youth Group Every Sunday - 6-8 p.m.

SKIDMORE

St. Oswald's-in-the-Fields Episcopal Church

30996 X Avenue, Skidmore, MO
 2nd Sundays - 11 a.m., Morning Prayer service by Lay Reader
 4th Sundays - 11 a.m., Eucharist Service

Retired Holt County teachers attend MRTA state meeting

Phyllis Dannar, Oregon, Mo., and Rana Killingsworth, Skidmore, Mo., represented the Atchison-Holt Unit of the Missouri Retired Teachers' Association and Public School Personnel (MRTA) at the organization's state meeting in Jefferson City, Mo., on Wednesday, Sept. 10, and Thursday, Sept. 11. There, Dannar and Killingsworth accepted the Unit of Excellence Award, which is earned when unit members complete 25 of the 28 possible tasks requested by MRTA.

Two of the tasks, for example, included participating in a unit community service project and acting as community volunteers. In Atchison and Holt counties, local unit members brought items to each meeting that were given to local food pantries; in 2013 the Atchison-Holt Unit members donated 377 items and spent 6,249 hours volunteering their time.

The Atchison-Holt MRTA Unit also participated in the Missouri Retired Teachers' Foundation (MRTF) silent auction project at the state meeting. This year, the silent auction raised \$1,780 to be used as \$500 classroom grants. Last year, MRTF awarded 84 such grants to classroom teachers throughout the state.

One of the state meeting speakers, MRTA Executive Director Jim Kreider, discussed Amendment 3, which will appear on the November ballot. Kreider ad-

vised MRTA members to speak to others about the negative points of this amendment; it will treat students like numbers and take local control away from parents, teachers and school districts to hand it to Jefferson City politicians. This costly amendment is a one-size-fits-all approach to children that would force taxpayers to spend money on even more government-mandated standardized tests.

Public School Retirement System and Public Education Employee Retirement System (PSRS/PEERS) Executive Director Steve Yoakum informed the group that it was a "major financial engine for the state" as more than \$200 billion was paid out in retirement funds in 2013. Of this amount, \$1.9 billion was distributed among Missouri's 114 counties, positively impacting the state's economy. This retirement system is a major incentive for recruiting new teaching staff.

Those who are retired school employees should consider joining the Atchison-Holt MRTA Unit. MRTA is a grassroots organization of 23,000 members with retired school personnel as its main focus. Members are going places and completing significant projects.

The next meeting will be at 11 a.m. on Thursday, Nov. 6, in Tarkio, Mo., at the Tarkio Resource Center.

Atchison-Holt Electric welcomes new general manager

Atchison-Holt Electric in Rock Port, Mo., would like to announce the hiring of new General Manager/CEO Kevin P. Dechant. Dechant will be joining the Atchison-Holt Electric Cooperative team on Monday, Dec. 1.

Prior to accepting the general manager position with Atchison-Holt Electric Cooperative, Dechant served as manager of compliance for the Kern division of Pacific Gas and Electric. He began his career with electric cooperatives in 1992 as an apprentice lineman, and until his departure in 2013, he held many positions of increasing responsibility. Dechant has directed both an engineering and compliance department and has served as a key accounts representative, a GIS mapping coordinator, and as a class A journeyman lineman.

Dechant attended the Naval Nuclear Power Schools during a tour with the United States Navy. In addition, Dechant attended Pratt Community College's lineman program and has also earned a Bachelor of Sci-

ence degree in Business Administration from Friends University. Dechant was also fortunate to participate in NRECA's Management Internship Program as well as PG & E's supervisory leadership program.

Dechant's work experience includes four years with Otero County Electric Cooperative as a journeyman lineman. Dechant spent 17 years with Ark Valley Electric Cooperative as design engineer/lineman/key accounts. Dechant also was with Pacific Gas and Electric for a year as a compliance supervisor.

Dechant brings with him his wife, Jennifer, 2.5-year-old daughter Bryn Madison and 1-year-old son Bodie Patrick. He enjoys competitive adventure racing, hunting and fishing, reading and being active with various community volunteering opportunities.

Dechant and his family wish to express their excitement with this tremendous opportunity and look forward to adding value to local communities as well as the team at Atchison-Holt Electric Cooperative.



Karlene Harrison, District 2 Volunteer of the Year - Poses with her certificate. Harrison was nominated by Tiffany Heights, and after her district win, she attended the state convention in Branson, Mo. Harrison, who has worked at Mound City R-2 for 10 years, is the Family and Consumer Sciences (FACS) teacher and sponsor of Family, Career and Community Leaders of America (FCCLA) and the National Honor Society (NHS).

News from Tiffany Heights: Residents welcome autumn

Residents at Tiffany Heights in Mound City, Mo., were busy the week of Monday, Sept. 8, with crafts, music and games.

On Monday afternoon, residents made an owl door hanger. Shirley Jackson, Joan Smith and Debbie Friend assisted. After completing the craft, residents enjoyed cookies and drinks.

Bill Bridgewater, chaplain for Kendallwood Hospice, led Bible study on Tuesday morning, Sept. 9. Barbara Hanlon assisted. During the afternoon, residents played a word game; they had to guess answers to questions that included summer activities and the number "9."

Pastor Paul Grant entertained residents with music on

Wednesday afternoon, Sept. 10.

Bingo volunteers on Thursday, Sept. 11, were Shirley Jackson, Peggy Johnson, Jean McCall, Lucille Stull, Debbie Friend and Mary Lee Privett. The winner of the game was Judy Carney.

Barbara Hanlon and Betty Kilim provided glamour nails on Friday morning, Sept. 12. During the afternoon, residents enjoyed fresh watermelon.

Residents played their games of choice on Saturday afternoon, Sept. 13.

Larry Brickey and the Mound City Baptist Church family led services on Sunday morning, Sept. 14. The First Christian Church conducted afternoon worship.

Party in the Park: Christian Fellowship Church celebrates 34 years

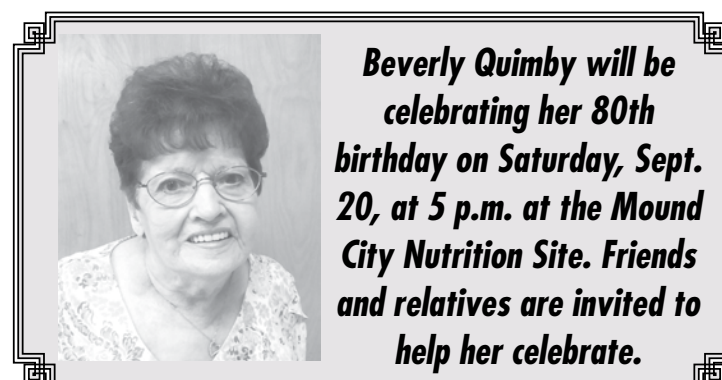
In honor of the church's 34th anniversary, the Christian Fellowship Church in Mound City will be hosting a Party in the Park following the worship service at 10:30 a.m. at the stage in Mound City's Griffith Park on Sunday, Sept. 21.

The first church service was held at the Lions Club Building on Sept. 22, 1980. On Oct. 26, 1980, the congregation moved to Mound City's Mrs. E.K. Griffith Building at 513 State St., which is now the White Rose. Jim Brown, minister of the Forest City (Mo.) Christian Church frequently led services and became the full-time minister for the church on Oct. 17, 1982; he has remained with the church to date. Land at the present-day site on Hwy. 59 was purchased on May 23, 1982. Construction on the church building began Oct. 6, 1983, and the first event held there was on Oct. 6, 1984.

Christian Fellowship is a nondenominational and Bible-based church wanting all people to come to know Jesus Christ. Its mission statement is "We proclaim Him admonishing and teaching everyone with all wisdom, so that we may present everyone perfect in Christ. Colossians 1:28."

To celebrate the anniversary, services will be held outside; all attendees are encouraged to bring a lawn chair or blanket. Pastor Jim Brown will be giving the message, and special music will include numbers by Jim Brown, Kayla Schoonover, Lori Miller, Shaylin Miller, Krista Morris, the Morris girls, the children's bell choir, Britney Wright and Sarah Dudeck, and Lydia and Cameron Sheldon. The congregation will also sing many inspirational hymns and songs of praise together.

Following the service, hamburgers, hot dogs, French fries and all sides will be provided at the shelter house. After lunch, participants may enjoy homemade ice cream, desserts, fellowship and games.



Beverly Quimby will be celebrating her 80th birthday on Saturday, Sept. 20, at 5 p.m. at the Mound City Nutrition Site. Friends and relatives are invited to help her celebrate.

River Of Hope Fellowship

Dedication & Open House

"Nothing is Impossible with God"

Sunday, September 21

Dedication Service: 10:30 a.m.
 Open House: 2-4 p.m.

Come on out, enjoy some cake and punch and take a tour of our new church facility.

Exit 79 at I-29 & Hwy. 159 (just 1/2 mile east on 159)

I.O.O.F. Cemetery, Craig, Mo.

is accepting donations to help with the rock fund.
 (Drive through to see road work completed).

Mail donations to:
 Terry Tubbs, 18299 Holt 130, Craig, MO 64437

Checks payable to I.O.O.F. Cemetery



Suzanne Southard, center in white, - Celebrates her retirement from Community Hospital-Fairfax in Fairfax, Mo., at a reception on Friday, Sept. 12. With her, from left to right, are Curtis Southard, Payton Southard, Dana Southard, Benjamin Southard, Roger Southard, Lisa Mitchell, Tacy Mitchell, Gena Mitchell and Tony Mitchell.

CH-F says goodbye to CFO

Suzanne Southard, chief financial officer (CFO) of Community Hospital-Fairfax in Fairfax, Mo., retired Friday, Sept. 12, 2014, after 38 years of service to the organization.

Southard worked in many different capacities in the hospital; she began as an admitting clerk and worked her way up to CFO.

During Southard's tenure, Community Hospital-Fairfax saw several changes, most notably the construction and move to a new hospital in 2010.

Southard was honored with a reception on Friday, and coworkers, friends and family gathered to wish her well and share stories and memories. After many dedicated years of service to the hospital, Southard looks forward to joining her husband, Roger, on the family farm.

Nodaway River Bridge closed on Route A

The bridge on Route A over the Nodaway River, just east of Maitland, Mo., is now closed, the Missouri Department of Transportation (MoDOT) reported. Once flood waters have receded, inspectors from the state bridge division will determine if recent flooding has caused deterioration to the structure. The bridge will not reopen until inspectors are certain it is safe for motorists. Motorists are asked to use Routes 113, 46 and U.S. Highway 71 as detour routes.

The 51-year-old bridge carries approximately 2,300 vehicles per day. Inspectors, concerned that storm waters may have caused excessive scouring, will deter-

mine if the scour has reached a point that continued use would exceed safe conditions.

"Safety is our highest priority at MoDOT, and closure of this structure ensures that travelers are not at risk," said MoDOT District Engineer Don Wichern. "Our team of inspectors will investigate and determine if it is safe for travelers to reopen the bridge or if it will need to remain closed until repairs can be made."

The Route A Nodaway River Bridge was built in 1963. All bridges throughout the United States are federally required to be inspected at least every two years. MoDOT's Northwest District has more than 1,300 bridges among

its 20 counties.

For more information about this and other MoDOT projects, call 1-888-ASK-MODOT (888-275-6636) or visit www.modot.org/northwest and view the online Traveler Information Map. In addition, MoDOT provides updated information on Twitter @MoDOTNorthwest and Facebook at www.facebook.com/MoDOT-NWDistrict.

Pie crust recipe

Ingredients

1 cup ice water
2 cups shortening
3 cups flour
1 teaspoon salt

Directions

Mix the shortening, salt and flour, gradually cutting it up until course and crumbly. Add ice water slowly into flour, and mix well. Knead until smooth, and fit into pie tin. This recipe will make three double crust pies.

- Submitted by Julia Gilland

It's a boy!

Mike and Jenny Bucy of Graham, Mo., welcomed their son, Evan Michael, on Saturday, Aug. 30, 2014, at Heartland Regional Medical Center in St. Joseph, Mo. Evan weighed 6 pounds, 7 ounces, and was 20 inches long.

The maternal grandparents are Scott and Linda Gallagher of Maitland, Mo. The maternal great-grandmother is Kathleen Schafer of Skidmore, Mo.

The paternal grandparents are Charles and Janet Bucy of Maitland. The paternal great-grandmother is Frances Trombley of St. Clair Shores, Mich.

Biermanns welcome baby girl

Chris and Jennifer Biermann of Mound City, Mo., would like to announce the birth of their daughter, Johannah Caroline. She was born Tuesday, Aug. 12, 2014, at Heartland Regional Medical Center in St. Joseph, Mo. Johannah weighed 8 pounds, 6 ounces, and was 21 inches long. She joins big brother Cameron, who is 3.5 years old.

The aternal grandparents are Curtis and Debbie Lawson of Maryville, Mo. The maternal great-grandparents are Joe and Beverly Auten and Madonna Lawson, all of Maryville.

The paternal grandparents are Greg and Susan Biermann of Maitland, Mo. The paternal great-grandmother is Audrey Wright of Graham, Mo.

This Week's History

From the *Mound City News* archives

50 Years Ago - 1964

- Miss Patsy Hollenbeck, daughter of Mr. and Mrs. Glenn Hollenbeck, Mound City, was selected to reign as queen of the 1964 Holt County Autumn Festival. Her attendants were Miss Rosemary Brown, daughter of Mr. and Mrs. W.C. Brown, and Miss Nancy Rolens, daughter of the Rev. and Mrs. Hugo Rolens, all of Oregon. The junior queen was Jean Ann Doebbeling, daughter of Mr. and Mrs. Bob Doebbeling of Oregon. Her attendants were Miss Terri Beth Hunziger, daughter of Mr. and Mrs. Lee Hunziger, and Miss Marilyn Ferguson, daughter of Mr. and Mrs. Nick Ferguson, all also of Oregon.

- The annual meeting of the Holt County Co-operative Association was held at the Co-op Service Station in Mound City with approximately 250 members, employees and friends in attendance.

- Mr. and Mrs. W. J. (Jim) McRae would be taking up residence in Mound City. They were the parents of Dr. J. Bruce McRae and made their home here for four years some time ago. They were moving here from Galt, Ontario, Canada.

25 Years Ago - 1989

- Contestants and winners in the three queen contests at the Holt County Autumn Festival came from all parts of Holt County, as participation was tremendous. The committee divided the affair into three age groups for the first time in hopes of having a more even balance of contestants. The new format seemed to bring out just that many more girls wanting to take part. Tara Summers, daughter of Mr. and Mrs. Max Summers, and a senior at Nodaway-Holt was named Autumn Festival Senior Queen. Her attendants were Marde Kent, daughter of Mr. and Mrs. Ivan Kent, Corning, and Libbie McClelland, daughter of Mr. and Mrs. George McClelland, Hagerstown, Md. Marde and Libbie were both students at Craig R-3. Kelley Morris, daughter of Mr. and Mrs. Phil Morris, Oregon, was crowned Junior Queen. Her attendants were Jodee Weis, daughter of Mr. and Mrs. Kenneth Weis, Oregon, and Bobbie Parman, daughter of Mr. and Mrs. Bob Parman, Barnard. Amber Lynn Dougherty, daughter of Mr. and Mrs. John Dougherty, Oregon, was named Junior Miss. Rachel Banks, daughter of Mr. and Mrs. David Banks, Oregon, and Kodi Keiffer, daughter of Mr. and Mrs. Billy Keiffer, Mound City, were her attendants.

10 Years Ago - 2004

- Three old houses and a downtown business building were declared to be dangerous by the Mound City's Board of Code Appeals after a two-hour hearing. The I.O.O.F. building, owned by Pam Smith and Tim Smith and built in 1894 at 501 State St., drew the most discussion. Pam Smith claimed the city was at fault, and she wouldn't spend money on the building until basement water problems were solved.

- The Autumn Festival queen was Amanda Williams of Oregon. Josie Asher of Mound City and Mallory Ferguson of Craig were her attendants.

- A jury trial for former Mound City fireman Scott Vergith was to be held in Grant City on two felony counts of knowingly burning; the charges were made in connection with a string of arson fires the prior winter in Holt County.

- Mound City planned to cut trees and clear an area along the south side of South Street to create parking space to resolve longtime parking problems at the HUD housing units between South and Walnut streets at the north end of town.

Tiffany Heights Nursing Home and TCC Rehab Services
1531 Nebraska St., Mound City, MO 64470

RESIDENT OF THE MONTH



MARY CATHERINE BALL
Mary Catherine Ball, 92, has been a resident at Tiffany Heights since July, 2014. She is from Mound City. Mary enjoys writing and has a book at the library titled, "My Story". Mary also likes to do latch hook.
The staff at Tiffany Heights says that Mary is a special person and is sweet and kind.

Call: 660-442-3146
for info on care and rehab services offered to you from Tiffany Heights Nursing Home.

HAY RIDES
Begin Sept. 27 & 28 And Are Held Every Weekend In October



HUNT GRANDVIEW ORCHARD
Hours: Mon.-Sat.: 9 a.m.-5:30 p.m.
Wed.: 9 a.m.-5 p.m. • Sun.: 1:30-5 p.m.
Amazonia, MO, Exit 60 on I-29
816-475-3441

Apples, Peaches, Cider
Amish Products & More

Commercial or Personal
PRINTING

- * Envelopes
- * Carbonless Forms
- * Letterhead
- * Business Cards
- * Business Forms

Mound City
NEWS
511 State, Mound City, MO
660-442-5423

What do you remember?

The Holt County Historical Society is looking for answers to these questions that have been submitted by researchers.



WILD ROSE COUNTRY SCHOOL

This photo of Wild Rose, near Craig, Mo., was given to the Holt County Historical Society by Gailen Stockwell, Hot Springs Village, Ark. Eli Franklin Caton was in the group. Merilee Markt, Oregon, Mo., brought a copy of the picture along with his precious handwritten history and copies of his Wild Rose report cards from ages 6, 7 and 10. Edna J. Browning was the teacher.

"During my third and fourth grade I attended Summit School because the Wild Rose School burnt down after my second grade. We moved to the Summit School district three miles west of Mound City on what is now 59 Highway on a farm owned by grandfather W.F. Caton and the children of our folks attended Summit those two years. By going through a short cut on a section line straight west one mile to Summit, a neighbor, Emory (Straw) Smith, came by each day of a morning and we walked to school together. We were 'bout the same age. We have always been the best of friends. During the spring of 1915 we moved back to our home west of the old Wild Rose School district that had been rebuilt and went there until the district ran out of money to pay the teacher."

Written by Eli Franklin Caton (1906-1994)

If anyone has any information about any of these items, please call 660-442-5949.

"Heritage of the past to the present generation and to preserve for the future"
We are open 9 a.m.-3 p.m. on Wednesdays at 612 State Street in Mound City

THE HOLT COUNTY HISTORICAL SOCIETY

612 STATE STREET • PO Box 55 • Mound City, MO 64470

The society has a new e-mail address: hchs1972@gmail.com

Holt County Autumn Festival: Junior Exhibit results

The Junior Exhibits at the Holt County Autumn Festival, held Wednesday, Sept. 3, through Saturday, Sept. 6, in Oregon, Mo., had 287 entries; the winners of the event, which Wayne Flanary, University of Missouri Extension agronomist, and Tracy Shewey, Extension office manager, chaired, are below:

Grand Prize winners
Preschool division: Claire Ezzell, Oregon
6-10 year division: Lydia Markt, Oregon
11-18 year division: Dallas Nowling, Forest City, Mo.

Division I: Home Economics
Lot A: Sewing
 Class 1, Clothing Item: 11-18 years
 • Blue, Sophie Richards

Class 2, Home Accessory: 6-10 years
 • Blue: Kiley Caton
 • Red: Serenity Greife
 • White: Lydia Markt

Class 2, Home Accessory: 11-18 years
 • Blue: Natalie Caton

Class 3, Sewing Miscellaneous: 6-10 years
 • Blue: Tait Morris
 • Red: Kiley Caton
 • White: Serenity Greife
 • Honorable mention: Maelea McFarland

Class 3, Sewing Miscellaneous: 11-18 years
 • Blue: Natalie Caton

Lot C: Food Preservation
 Class 5, Jellies/Jams: 6-10 years
 • Blue: Alaina Riley
 • Red: Tait Morris:

Class 5, Jellies/Jams: 11-18 years
 • Blue: Reese Morris

Class 6, Vegetables/Pickles: 6-10 years
 • Blue: Alaina Riley

Class 6, Vegetables/Pickles: 11-18 years
 • Blue: Maverick McFarland

Lot D: Baked Goods

Class 8, Cookies/Candies: 6-10 years

- Blue: Aaron Riley
- Red: Alaina Riley

Class 8, Cookies/Candies: 11-18 years

- Blue: Willis Wilson
- Red: Kody Browning

Class 10, Cupcakes/Muffins: 6-10 years

- Blue: Alaina Riley

Class 10, Cupcakes/Muffins: 11-18 years

- Blue: Antonio Bender
- Red: Willis Wilson

Class 11, Cakes/Pies: 6-10 years

- Blue: Aaron Riley

Class 11, Cakes/Pies: 11-18 years

- Blue: Emilie Browning

Class 12, Decorated Cakes/Cookies: 6-10 years

- Blue: Alaina Riley
- Red: Aaron Riley

Division II: Horticulture
Lot A: Fresh Flowers

Class 13, Zinnia: Preschool

- Blue: Brilee Bailey
- Red: Claire Ezzell

Class 13, Zinnia: 6-10 years

- Blue: Lauren Quinlin

Class 13, Zinnia: 11-18 years;

- Blue: Grace Ezzell
- Red: Emma Ezzell

Class 14, Marigold: Preschool

- Blue: Zachary Caton
- Red: Claire Ezzell
- White: Brilee Bailey

Class 14, Marigold: 6-10 years

- Blue: Kiley Caton

Class 14, Marigold: 11-18 years

- Blue: Grace Ezzell
- Red: Emma Ezzell

Class 15, Petunia: Preschool

- Blue: Claire Ezzell
- Red: Zachary Caton
- White: Brilee Bailey

Class 15, Petunia: 6-10 years

- Blue: Aaron Riley
- Red: Kiley Caton

Class 15, Petunia: 11-18 years

- Blue: Grace Ezzell
- Red: Emma Ezzell

Class 16, Fresh Bloom Miscellaneous: Preschool

- Blue: Claire Ezzell
- Red: Zachary Caton

Class 16, Fresh Bloom Miscellaneous: 6-10 years

- Blue: Alaina Riley
- Red: Kiley Caton

Class 16, Fresh Bloom Miscellaneous: 11-18 years

- Blue: Emma Ezzell
- Red: Grace Ezzell

Class 17, Fresh Flowers: Preschool

- Blue: Claire Ezzell
- Red: Zachary Caton

Class 17, Fresh Flowers: 6-10 years

- Blue: Lauren Quinlin
- Red: Kiley Caton

Class 17, Fresh Flowers: 11-18 years

- Blue: Willis Wilson
- Red: Grace Ezzell
- White: Emma Ezzell

Lot B: Arrangements
 Class 18, Silk/Dried Flowers: 6-10 years

- Blue: Kiley Caton

Class 18, Silk/Dried Flowers: 11-18 years

- Blue: Bryan Nowling

Division III: Creative Arts
Lot A: Painting

Class 20, Oil/Acrylic: Preschool

- Blue: Claire Ezzell
- Red: Zachary Caton
- White: Lochlan Bailey

Class 20, Oil/Acrylic: 6-10 years

- Blue: Lydia Markt
- Red: Kiley Caton
- White: Tait Morris

Class 20, Oil/Acrylic: 11-18 years

- Blue: Nathanael Markt
- Red: Natalie Caton
- White: Sophie Richards

Class 21, Watercolor/Tempera:

- Blue: Zachary Caton



The collection of Junior Exhibits - Sits on display at the Holt County Autumn Festival, held Wednesday, Sept. 3, through Saturday, Sept. 6, in Oregon, Mo.

Preschool
 • Blue: Claire Ezzell
 • Red: Zachary Caton

Class 21, Watercolor/Tempera: 6-10 years

- Blue: Hattie Luce
- Red: Kiley Caton
- White: Kal McFarland

Class 21, Watercolor/Tempera: 11-18 years

- Blue: Sophie Richards
- Red: Natalie Caton
- White: Courtney Gordon

Class 22, Painting Miscellaneous: Preschool

- Blue: Claire Ezzell
- Red: Zachary Caton
- White: Lochlan Bailey

Class 22, Painting Miscellaneous: 6-10 years

- Blue: Maelea McFarland
- Red: Isaac Dudeck
- White: Serenity Greife
- Honorable mention: Addison Bailey

Class 22, Painting Miscellaneous: 11-18 years

- Blue: Natalie Caton
- Red: Sophie Richards
- White: Maverick McFarland

Lot B: Drawing
 Class 23, Pencil/Colored: Preschool

- Blue: Caden Wilson
- Red: Claire Ezzell
- White: Zachary Caton

Class 23, Pencil/Colored: 6-10 years

- Blue: Hattie Luce
- Red: Lydia Markt
- White: Isaac Dudeck
- Honorable mention: Kal McFarland

Class 23, Pencil/Colored: 11-18 years

- Blue: Natalie Caton
- Red: Willis Wilson
- White: Joel Dudeck
- Honorable mention: Maverick McFarland

Class 24, Ink: Preschool

- Blue: Caden Wilson
- Red: Zachary Caton

Class 24, Ink: 6-10 years

- Blue: Kiley Caton
- Red: Isaac Dudeck

Class 25, Crayon: Preschool

- Blue: Sophia Mendenhall
- Red: Caden Wilson
- White: Claire Ezzell
- Honorable mention: Zachary Caton

Class 25, Crayon: 6-10 years

- Blue: Isaac Dudeck
- Red: Katie Mendenhall
- White: Kiley Caton

Class 25, Crayon: 11-18 years

- Blue: Natalie Caton
- Red: Joel Dudeck
- White: Sophie Richards
- Honorable mention: Grace Ezzell

Class 26, Marker: Preschool

- Blue: Claire Ezzell
- Red: Caden Wilson
- White: Zachary Caton

Class 26, Marker: 6-10 years

- Blue: Isaac Dudeck
- Red: Kiley Caton
- White: Aaron Riley
- Honorable mention: Amos Bender

Class 26, Marker: 11-18 years

- Blue: Sophie Richards
- Red: Natalie Caton
- White: Joel Dudeck
- Honorable mention: Grace Ezzell

Lot C: Wood/Metal Craft
 Class 27, Indoor Item: Preschool

- Blue: Zachary Caton

Class 27, Indoor Item: 6-10 years

- Blue: Kal McFarland
- Red: Tait Morris

Class 27, Indoor Item: 11-18 years

- Blue: Maverick McFarland
- Red: Sophie Richards

Class 28, Outdoor Item: 6-10 years

- Blue: Alaina Riley

Class 28, Outdoor Item: 11-18 years

- Blue: Dallas Nowling
- Red: Sophie Richards
- White: Reese Morris

Class 29, Carving: 11-18 years

- Blue: Bryan Nowling

Lot D: Sculpting
 Class 30, Clay: Preschool

- Blue: Zachary Caton

Class 30, Clay: 6-10 years

- Blue: Kiley Caton
- Red: Lydia Markt

Class 30, Clay: 11-18 years

- Blue: Sophie Richards
- Red: Nathanael Markt
- White: Reese Morris
- Honorable mention: Natalie Caton

Lot E: Cutting/Pasting
 Class 32, Collage: Preschool

- Blue: Zachary Caton

Class 32, Collage: 6-10 years

- Blue: Tait Morris
- Red: Kiley Caton
- White: Isaac Dudeck

Class 32, Collage: 11-18 years

- Blue: Sophie Richards
- Red: Natalie Caton

Class 33, Cutting/Pasting Miscellaneous: Preschool

- Blue: Claire Ezzell
- Red: Zachary Caton
- White: Sophia Mendenhall

Class 33, Cutting/Pasting Miscellaneous: 6-10 years

- Blue: Alaina Riley
- Red: Tait Morris
- White: Kiley Caton
- Honorable mention: Isaac Dudeck

Class 33, Cutting/Pasting Miscellaneous: 11-18 years

- Blue: Reese Morris
- Red: Grace Ezzell
- White: Bryan Nowling

Lot F: Fiber
 Class 34, Crochet/Knit: 6-10 years

- Blue: Elizabeth Laukemper

Class 34, Crochet/Knit: 11-18 years

- Blue: Sophie Richards
- Red: Cameron Laukemper

Class 35, Weaving: Preschool

- Blue: Claire Ezzell
- Red: Zachary Caton

Class 35, Weaving: 6-10 years

- Blue: Kenna Morris
- Red: Elizabeth Laukemper
- White: Kiley Caton

Class 35, Weaving: 11-18 years

- Blue: Natalie Caton
- Red: Cameron Laukemper
- White: Sophie Richards

Class 36, Fiber Miscellaneous: Preschool

- Blue: Zachary Caton

Class 36, Fiber Miscellaneous: 6-10 years

- Blue: Kal McFarland
- Red: Kiley Caton
- White: Elizabeth Laukemper

Lot B: Multiple Photos
 Class 45, Series: Preschool

- Blue: Claire Ezzell

Class 36, Fiber Miscellaneous: 11-18 years

- Blue: Sophie Richards
- Red: Cameron Laukemper
- White: Reese Morris

Lot G: Building/Plastics
 Class 37, Models: 6-10 years;

- Blue: Alex Calkin
- Red: Kiley Caton

Class 38, Building Miscellaneous: Preschool

- Blue: Claire Ezzell

Class 38, Building Miscellaneous: 11-18 years

- Blue: Bryan Nowling
- Red: Kody Browning

Class 39, Legos/K'nex/Etc.: Preschool

- Blue-Caden Wilson

Class 39, Legos/K'nex/Etc.: 6-10 years

- Blue: Amos Bender
- Red: Hunter Gordon
- White: Isaac Dudeck
- Honorable mention: Alex Calkin

Class 39, Legos/K'nex/Etc.: 11-18 years

- Blue: Willis Wilson
- Red: Andrew Quinlin
- White: Nathanael Markt
- Honorable mention: Maverick McFarland

Class 40, Beadwork: 6-10 years

- Blue: Kiley Caton
- Red: Tait Morris

Class 40, Beadwork: 11-18 years

- Blue: Reese Morris
- Red: Natalie Caton

Division IV: Photography
Lot A: Single Photo

Class 41, Nature: Preschool

- Blue: Zachary Caton

Class 41, Nature: 6-10 years

- Blue: Maelea McFarland
- Red: Serenity Greife
- White: Kiley Caton

Class 41, Nature: 11-18 years

- Blue: Courtney Gordon
- Red: Grace Ezzell
- White: Maverick McFarland

Class 42, Animals: Preschool

- Blue: Claire Ezzell
- Red: Zachary Caton

Class 42, Animals: 6-10 years

- Blue: Kiley Caton
- Red: Hattie Luce

Class 43, People: Preschool

- Blue: Claire Ezzell
- Red: Zachary Caton

Class 43, People: 6-10 years

- Blue: Kiley Caton
- Red: Hunter Gordon
- White: Serenity Greife

Class 43, People: 11-18 years

- Blue: Courtney Gordon
- Red: Grace Ezzell

Class 44, Photos Miscellaneous: Preschool

- Blue: Claire Ezzell
- Red: Zachary Caton

Class 44, Photos Miscellaneous: 6-10 years

- Blue: Kiley Caton

Class 44, Photos Miscellaneous: 11-18 years

- Blue: Grace Ezzell
- Red: Courtney Gordon

Lot B: Multiple Photos
 Class 45, Series: Preschool

- Blue: Claire Ezzell

Continued to page 7



Community Hospital
 Fairfax

COMMUNITY IS IN EVERYTHING WE DO.
 26136 Hwy 59, Fairfax, Mo (660) 686-2211 www.FairfaxMed.com



Scott Coatsworth M.D.
 Community

Holt County Autumn Festival: Junior Exhibit results

From page 6

Class 45, Series: 6-10 years
 • Blue: Hattie Luce
 • Red: Maelea McFarland

Class 45, Series: 11-18 years
 • Blue: Grace Ezzell
 • Red: Maverick McFarland

Class 46, Album: Preschool
 • Blue: Claire Ezzell

Class 46, Album: 11-18 years
 • Blue: Grace Ezzell

Division V: Writing
Lot A: Single Piece
 Class 47, Poem: 6-10 years
 • Blue: Aaron Riley

Class 47, Poem: 11-18 years
 • Blue: Sianna Meadows
 • Red: Grace Ezzell
 • White: Reese Morris

Class 48, Story: Preschool
 • Blue: Claire Ezzell

Class 48, Story: 6-10 years
 • Blue: Lydia Markt
 • Red: Tait Morris
 • White: Sydney Meadows

Class 48, Story: 11-18 years
 • Blue: Reese Morris
 • Red: Grace Ezzell

Lot B: Multiple Piece
 Class 49, Book: Preschool
 • Blue: Claire Ezzell

Class 49, Book: 6-10 years
 • Blue: Amos Bender

Class 49, Book: 11-18 years
 • Blue: Willis Wilson

Class 50, Writing Miscellaneous: Preschool
 • Blue: Claire Ezzell

Class 50, Writing Miscellaneous: 6-10 years
 • Blue: Katie Mendenhall
 • Red: Kiley Caton

Class 50, Writing Miscellaneous: 11-18 years
 • Blue: Grace Ezzell
 • Red: Andrew Quinlin
 • White: Nathanael Markt

Division VI: Collections
Lot A: Nature
 Class 51, Rocks/Sea Shells: Preschool
 • Blue: Claire Ezzell
 • Red: Zachary Caton

Class 51, Rocks/Sea Shells: 6-10 years
 • Blue: Kal McFarland
 • Red: Kiley Caton

Class 51, Rocks/Sea Shells: 11-18 years
 • Blue: Reese Morris
 • Red: Natalie Caton
 • White: Maverick McFarland

Class 52, Insects: 6-10 years
 • Blue: Kiley Caton

Lot B: Man-Made
 Class 53, Coins/Stamps: Preschool
 • Blue: Zachary Caton

Class 53, Coins/Stamps: 6-10 years
 • Blue: Kiley Caton

Class 53, Coins/Stamps: 11-18 years
 • Blue: Natalie Caton

Class 54, Trading Cards: 11-18 years
 • Blue: Mequilla Rader

Class 55, Man-made Collections Miscellaneous: Preschool
 • Blue: Zachary Caton

Class 55, Man-made Collections Miscellaneous: 6-10 years
 • Blue: Aaron Riley
 • Red: Tait Morris
 • White: Kiley Caton
 • Honorable mention: Elizabeth Laukemper

Class 55, Man-made Collections Miscellaneous: 11-18 years
 • Blue: Maverick McFarland
 • Red: Grace Ezzell
 • White: Reese Morris
 • Honorable mention: Bryan Nowling

Lot C: Keepsakes
 Class 56, Vacation Souvenirs: 6-10 years
 • Blue: Alex Calkin
 • Red: Kal McFarland

Class 57, Scrapbook: 6-10 years
 • Blue: Lauren Quinlin

Holt County Autumn Festival: Junior Pet Show results

The 2014 Holt County Autumn Festival Junior Pet Show, held Saturday, Sept. 6, in Oregon, Mo., saw a total of 19 furry, feathered and unusual pets.

Each animal was scored by judge Lori Ripley on appearance and disposition, and each pet owner participated in a personal interview; those with the highest scores were moved to the Champion and Reserve Champion divisions for the 11-18-year-old and 10-and-under owners.

All of the competitors were awarded a first-place ribbon and a premium in a special category that Ripley believed each best fulfilled.

The event was chaired by Nancy Wales of the Holt County Extension Council, and Chester Edwards, Holt County Extension Council member, took photographs; he was assisted by Tracy Shewey,

Extension support staff member. Taryn Weber assisted Ripley with judging.

The results of the competition are below:

Poultry

Entrants: Kody Browning of Craig, Mo., with Elvira and Emilie Browning, also of Craig, with Peachy. Browning and Elvira also won Reserve Champion in the 11-18 division.

Dogs (10 and under)

Entrants: Madelynn Hall of Oregon with Walter, Acen McGinnis of Oregon with Finnie, Kaden Hoepker with Molly and Sydney Meadows of Mound City with Honeysuckle. McGinnis and Finnie tied for Champion in the 10-and-under division, and Hall and Walter tied with Meadows and Honeysuckle for Reserve Champion in the 10-and-under division.

Dogs (11-18)

Entrants: Kody Browning of Craig with Dixie and Gannon Phelan with Moose.

Other small animals

Entrants: Ethan Hall of Oregon with Hermie the Hermit Crab, Kolton Leaky of Maitland, Mo., with Chocolate the Bearded Dragon and Kadee Crider of Craig with Runner the Hamster.

Rabbits

Entrants: Keagen Taylor of Oregon with Mr. Grinch, Hannah Platt of Maitland with Little Grey and Rosalie Platt of Maitland with Lioness.

Cats (10 and under)

Entrants: Paisley Milne of Oregon with Tuxx, Selah Meadows of Mound City with Jags, Hattie and Izzy Luce of Oregon with Snowflake and Keian Gallagher of Oregon with Lightning. The Luces and Snowflake also tied for Champion in the 10-and-under division.

Cats (11-18)

Entrant: Ashlynn Evans of Oregon with Si. Evans and Si also received Champion in the 11-18 division.



(LEFT)
Ashlynn Evans of Oregon, Mo. - Poses with her cat, Si, after winning the champion title in the 11-18 division at the Holt County Autumn Festival Junior Pet Show on Saturday, Sept. 6, in Oregon.



(RIGHT)
Izzy, left, and Hattie Luce of Oregon, Mo. - Stand with Snowflake. The girls and Snowflake tied for champion in the 10-and-under division at the Holt County Autumn Festival Junior Pet Show on Saturday, Sept. 6, in Oregon.

VOTERS FACE A CRUCIAL DECISION IN SELECTION OF THEIR NEXT STATE REPRESENTATIVE

"You would think that effective legislatures would address the most pressing problems in the state... (but instead) Missouri(ans) are poorly served by their representatives' out-of-proportion focus on trying to (nullify) federal laws..."

Effective and respected lawmakers get things done, move the state forward and improve the lives of citizens. Drafting and passing nullification laws--knowing full well the courts repeatedly have struck these down as unconstitutional--accomplishes nothing for the state or its citizens."

--From "Focus on Passing Laws Truly Helpful to the Public,"
St. Joseph News Press,
 July 6, 2013.



Fifth Generation Missouri Farmer
 Near Oxford, Worth County



Vietnam Veteran
 25th Infantry Division, Near Anloc

Our Dysfunctional State Legislature

When a steadfastly Republican newspaper like the *News-Press* is compelled to rebuke our legislators for their misplaced priorities, as it did last year in opposition to the ultimately unsuccessful attempt to override Governor Nixon's "entirely justifiable veto" of the so-called "Second Amendment Preservation Act," that should alert voters that our electoral process has gone awry. But foolish nullification laws are only one aspect of the problem.

Missouri's weak ethics laws and counterproductive term limits have created a system whereby lobbyists and wealthy campaign donors, working with secretive and ideologically driven organizations like the American Legislative Exchange Council (widely known as ALEC), set too much of the legislative agenda. The result is often gridlock where the same issues are debated annually but never resolved. And ordinary citizens find themselves unable to influence a system that is flush with cash from unregulated lobbyist gifts and unlimited campaign contributions.

When legislation does emerge, too often is it not only ideologically driven but ill-considered as well. The ten bills granting various sales taxes exemptions pushed through without any hearings during the final hours of the 2014 legislative session are but one example.

The Root of the Problem

In a recent commentary concluding that low voter participation in the electoral process leads to unbalanced political power, Steve Rose, another Republican and longtime Kansas political analyst, persuasively argues that

(l)ow-turnout primary elections in this country--where moderates do not get out and vote, but the hard right does--result in extremist candidates, who end up governing, particularly in our legislatures. They may not really reflect the average citizen's philosophy...

It will take a wake-up call to motivate more people to go to the polls...(which) is likely to be (legislative) over-reach...

When only a small percentage of people bother to follow events and take the time to vote, they are saying they do not care who governs them.

Yet, those elected to govern by a small minority of voters set the agenda for every governmental unit in America, from a small town...to state legislatures, to the Congress of the United States.
 --from "Voters' Apathy Leads to Unbalanced Power," The Kansas City Star, August 17, 2014.

The wake-up call for Missouri voters should be the dangers posed by a veto-proof supermajority in the legislature. While Governor Nixon's vetoes of all but one of the sales tax exemption bills were narrowly sustained, the legislature in the final days of the regular session overrode by a single vote his veto of the gravely flawed \$620 million income tax reduction bill. That bill will deprive the state of revenues necessary to support schools and services while benefitting the most affluent 20 percent of Missourians instead of those who deserve such tax relief.

Invitation to a Dialogue

Our First Congress believed that an informed public and a robust debate so essential to our political system that it subsidized the distribution of newspapers by setting the mailing fees for such periodicals at artificially low rates (the postal service was then the primary means of newspaper distribution). Accordingly, following that tradition, over the next seven weeks leading to the general election, I invite the Republican candidate, Allen Andrews, and other interested citizens, to join me in a dialogue, through our district newspapers, concerning public policy and the programs our legislature should adopt to meet those objectives.



Robert Ritterbusch

RITTERBUSCH FOR STATE REPRESENTATIVE

Leadership With a Greater Vision for the Future of Missouri

Paid for by Ritterbusch for District 1 Representative, Robert Ritterbusch, Treasurer

Storm barrels through area, leaves damage



A tree in a Graham, Mo., park - Lies on its side after a severe storm on Tuesday, Sept. 9, tore it out of the ground.



A Jeep Cherokee - Lies stranded after being washed off Interstate 29 during a severe storm on Tuesday evening, Sept. 9.



The damaged Nodaway-Holt R-7 band room - Is shown here. According to Superintendent Karma Coleman, the band room and the vocational agriculture building were "a total loss." Repairs are expected to take anywhere from four to six months.



A corn field near Nodaway-Holt R-7 - Shows damaged crops following the Tuesday, Sept. 9, storm.



Crumbled ceiling tiles and water - Litter the floor of a classroom at Nodaway-Holt R-7 in Graham, Mo., after a severe storm ripped through the area on Tuesday, Sept. 9.



Fallen ceiling tiles and water damage - Cover the floor and desks of the counselor's office at Nodaway-Holt R-7 on Wednesday, Sept. 10, hours after a storm swept through on Tuesday night.



Why Dr. Brown Keebler?

ACCEPTING PATIENTS OF ALL AGES

BOARD CERTIFIED IN INTERNAL MEDICINE AND PEDIATRICS

RESIDENT AND ACTIVE COMMUNITY MEMBER IN MOUND CITY

"I grew up in a small town in Mississippi, and I love the relationships that are fostered. My true passion is working with families in the clinic with the goal of improving their health as a whole."



NORTHWEST HEALTH SERVICES

Serving the Mound City Area for Over 30 Years

1303 State Street • Mound City, MO 64470

Medical: (660) 442-5464 Dental: (660) 442-5507

Mound City Medical Hours of Operation:

8am - 5pm Monday through Friday

MOUND CITY CLINIC PROVIDES

- Digital X-Ray
- In-House Lab
- Direct Referral to Heartland Health and Fairfax Hospitals
- Onsite Dental Care
- Onsite Behavioral Health
- Accepts All Payor Types
- Discount Program Available



Kansas City Power and Light crews - Work to restore power after the Tuesday, Sept. 9, storm caused 1,655 customers to lose electricity.



Water levels at Squaw Creek National Wildlife Refuge - Rise over the banks on Wednesday, Sept. 10. According to a release by the Missouri Department of Conservation, swollen refuge waters flooded nearby roads following the Tuesday, Sept. 9, storm.



A splintered tree lies - Near Mound City R-2 after a severe storm swept through the area on Tuesday, Sept. 9.

COMMUNITY-WIDE BABY SHOWER & OPEN HOUSE

Please join us in introducing Dr. Brown Keebler, MD & Dr. Samantha Sutton, DDS to our community. They invite you to participate in a community-wide baby shower to support local moms who are in need of essential baby items.

**THURSDAY
SEPT.
18**

3 - 5 P.M.

AT THE MOUND CITY MEDICAL AND DENTAL CLINICS



NORTHWEST HEALTH SERVICES

HOW YOU CAN HELP

There are hundreds of mothers in Mound City and surrounding communities who struggle to make ends meet. Northwest Health Services is hosting a community-wide baby shower to provide diapers, formula and baby food for local moms. All items and donations will go to the Mound City Ministerial Alliance. Join us, meet our new Providers and bring an item that will be donated to support moms in our community.

REFRESHMENTS SERVED

MOUND CITY MEDICAL AND DENTAL CLINICS

1303 State Street • Mound City, MO 64470

Medical: (660) 442-5464 Dental: (660) 442-5507

Mound City Medical Hours of Operation:

8am - 5pm Monday through Friday



Panthers march in Homecoming parade

Young Mound City R-2 students - Play their greatest hits on homemade instruments at the Rock 'N Roll Fantasy-themed Homecoming parade on Friday afternoon, Sept. 12.

The Great Northwest Wine Fest 2014 brings new vendors to town

Continued from front

Grant, John Miller and James Campbell and Company from Mound City and the Blue Grass Trio from Columbia, Mo., among others.

Grape stomping and views of the Mound City vineyards will take place in the afternoon, and attendees may also participate in two raffles. The first, provided by the Northwest Missouri Enterprise Facilitation board members, includes a 35-bottle wine refrigerator, a basket of wines from the participating wineries, and certificates or cash totaling \$100 from each of the Atchison, Holt, Nodaway, Andrew, Gentry and Worth counties; eight winners will be

awarded the prizes. The second is a 50/50 raffle. Winners need not be present to win.

Allredge is anticipating this year's participants will eclipse last year's count of 1,500. "We're expecting close to 2,000 people," she said.

Tickets for the event cost \$20 per person, which includes samples and an etched glass. For non-consumers and minors, tickets are \$10, and for children age 10 and under, the price of a ticket is \$5.

Proceeds from the event go toward Northwest Missouri Enterprise Facilitation's free, confidential business coaching in the six previously mentioned counties.



Mound City R-2 students and KISS fans - Sport painted faces and Panther pride at the Homecoming parade on Friday afternoon, Sept. 12; the theme of the parade was "Rock 'N Roll Fantasy."

Rock Port Tourism Board
2014
Oktoberfest
OCTOBER 4TH, 2014
Rock Port Memorial Park Noon-4 p.m.
*Bounce Houses *Food
*Kids Games *Vendors *Tons of Fun
FREE ENTRY!!!
Rock Port Country Club 4:30 p.m.-Midnight
*5 Live Bands *Food Vendor On Site
*Drinks *Free Gift to First 100 People
Advance Tickets \$15 - \$20 day of Show
21 years and older only
Live Music By:
*BOUND BY FLAMES *ONE HEADLIGHT HIGH
*OF TWO MINDS *SAVE THE HERO
3-D IN YOUR FACE
Tickets available from any RP Tourism Board member.



The Mound City R-2 high school cheerleaders - Smile at the crowd during the Homecoming parade on Friday afternoon, Sept. 12.



Bike winner rides in style

Emma Morris, left, of Fairfax, Mo. - Stands with her sisters, Piper, center, and Olivia, right, and her new bicycle after winning the Market Square Day raffle in Mound City on Monday, Sept. 1. Steph Miller-McCann of the Holt County Toy and Benevolent Fund presented the bike to the girls, who are the daughters of Kelly and Billy Morris.



Make Time With Mobile Deposit

Maximize time spent doing what you'd rather do by banking with your mobile device—from wherever and whenever you want. With NVB Mobile Deposit, you can deposit a check from your kitchen counter.

Make Mobile Deposits with the Right Bank.

NVB NODAWAY VALLEY BANK
the right bank..



Maryville
660-562-3232

Mound City
660-442-3131

Savannah
816-324-3158

St. Joseph
816-364-5678



nvb.com



Sitherwood wins Jelly Bean Internet tablet

Presiding Holt County Commissioner Mark Sitherwood won the Holt County Cancer Fund, Inc. Jelly Bean Internet tablet at the Holt County Autumn Festival, held Wednesday, Sept. 3, through Saturday, Sept. 6, in Oregon, Mo.

In addition to the booth at the festival, the Holt County Cancer Fund will continue its fundraising efforts with the annual Helping Hand Hoedown.

This year, the Hoedown will take place on Sunday, Oct. 5, at Paradise Park in Oregon, Mo. The family-friendly event will include pumpkin decorating, hula-hoop contests, stick horse races, Lego building, cupcake decorating, a football toss, monster cookie and a scavenger hunt. Free hot dogs and s'mores will be available to roast. In the evening, there will be a candlelight ceremony honoring and remembering those who have died because of cancer and those who have survived. A helium-filled balloon release will conclude the event.

All Holt County residents and their friends and family are invited to attend.

Medical Minute: COPD

"COPD, also known as Chronic Obstructive Pulmonary Disease, refers to a group of lung diseases that makes it hard to breathe. It includes emphysema, chronic bronchitis and even some cases of asthma. COPD develops slowly over time and reduces the ability of the airway to deliver the oxygen necessary for daily living. It is easy to mistake the breathlessness and coughing as a normal part of aging. There are some common symptoms that are associated with COPD. Symptoms can include ongoing cough, excessive mucus, breathlessness, wheezing and chest tightness.

COPD has no cure but can be managed through medication, physical activity and a reduction of risk-taking behaviors. There are common medical treatment goals for individuals with COPD. It is important to relieve symptoms, slow the progression of the disease, prevent and treat complications and improve overall health. There are also common self-management goals for individuals with COPD. It is important to avoid smoking and second-hand smoke, to have good nutrition and to stay hydrated, to engage in low- to moderate-intensity exercise programs, to stay up to date with immunizations and to utilize preventative inhalers as recommended by your doctor. If you feel like you are suffering from COPD, talk to your doctor today."

- Kathryn L. Worland, MSW, LCSW / Northwest Health Services, Medical Home Director, Behavioral Health Coordinator

Holt County real estate transfers

Caples Creek Properties, LLC, to G.K.R.T. Enterprises, LLC, Savannah, MO: Tract I: All of the East Half of Blocks 25 and 32, in the original town, now City of Oregon, Holt County, MO, see record for full description. Tract II: The South 15 feet of the North 80 feet of the West Half of Block 25, in the original town, now City of Oregon, Holt County, MO.

Donald L. Pounds and Sherri L. Pounds to Eddie Heitman and Betty Heitman, Skidmore, MO: Beginning at a point on the westerly right-of-way line of Missouri State Highway #111 and 510.60 feet North and 17.42 feet West of the Southwest Corner of the North Half of the Northwest Quarter of the Northeast Quarter of Section 31, Township 61, Range 39, see record for full description.

Ronald L. Eggers and Mary Kaye Eggers to John J. Hummer, Sr., and Jodie B. Hummer, St. Joseph, MO: The South Half of Lot 52 and all of lots 53, 54 and 55 in Alpine Beach in the Village of Big Lake.

Jimmie Androy and Joanna Androy to Kim Frances Saer and Jeffery Saer, Craig, MO: All of Lot 24 in Lindamood Addition in the Village of Big Lake.

Ann M. Edwards and Gary D. Edwards to Ann M. Edwards, Amazonia, MO: A tract of land in the Southeast Quarter of Section 24, Township 59 North, Range 37 West, Holt County, MO, see record for full description.

Ann M. Edwards and Gary D. Edwards to Ann M. Edwards, T.O.D., and Gary D. Edwards, T.O.D., Amazonia, MO: A tract of land in the Southeast Quarter of Section 24, Township 59 North, Range 37 West, Holt County, MO, see record for full description.

Samantha Hufford to Dustin L. Hufford and Renee C. Hufford, Craig, MO: All of Lots 5, 6, 7 and 8, all in Block 1 in the original town of Fortescue.

In Re: Survey for Lovejoy Home Sales to Lovejoy Home Sales: A tract of land in Section 13, Township 60, Range 38.

William R. Wallace and Deliana K. Wallace to William R. Wallace, T.O.D., and Deliana K. Wallace, T.O.D., Maitland, MO: Commencing at a point 424 feet West of the Southeast corner of the Southwest Quarter of the Southwest Quarter of Section 4, Township 62 North, of Range 37 West, see record for full description.

Tom V. Orchard to Keaton Vodicka and Ashley Vodicka, Omaha, NE: All of Lot 82 in Fairlanes Estate in the Village of Big Lake.

Mary Margaret Byergo Living Trust, by trustee, to Kapti, LLC, Warrenton, VA: All that part of the Southeast Quarter of Section 19, Township 62, Range 39, commencing at the Northwest corner of the Southeast Quarter mentioned, see record for full description.

JPMorgan Chase Bank to Eldon Bryce Horseman and Cheryl Lynn Horseman, Mound City, MO: A tract in the East Half of the Northwest Quarter of Section 6, Township 61, Range 37, see record for full description.

Mound City, MO, LLC, to Linda S. Alexander, Savannah, MO: All of Lots 18, 19 and 20 in Funny Farm Lake Lots in the Village of Big Lake.

Norman J. Barnes and Alyssa Barnes to Stephen Campbell and Marcia Campbell, Tarkio, MO: All of Lot 50 in Funny Farm Lake Lots in the Village of Big Lake.

Eva Mae Peter to Robert Dale Grasty and Sheri Grasty, Maitland, MO: The North 13 feet of Lot 8; all of Lot 9; and the South 18 feet of Lot 10, all in Block 5 in Barnard's

Addition in the city of Maitland.

Kirby Miles and Kena Miles to C & M Seed Center, Skidmore, MO: Commencing at the intersection of the northern right-of-way of the abandoned Burlington Northern Railroad and the western right-of-way line of Missouri State Highway Commission Route E (State Street), said point being the northeasterly corner of Tract 5 of abandoned Burlington Northern Railroad survey completed by Midland Engineering, Inc., see record for full description.

Richard D. Markt and Merrilee A. Markt to Richard D. and Merrilee A. Markt Trust: Tract 1: The North Half of the East Half of the Northwest Quarter of Section 5, Township 59, Range 38 West of the 5th P.M., containing 40 acres, more or less, all in Holt County. Tract 2: Commencing at the center of Section 7, Township 59 North, Range 38 West, see record for full description. Tract 3: The Southwest fractional Quarter of Section 31, Township 60 of Range 37; except a tract commencing at the Northwest corner of said Southwest Quarter of said Section 31, see record for full description. Tract 4: Commencing at the West Quarter corner of Section 30, Township 60 North, Range 38 West, see record for full description. Tract 5: Part of the South Half of the Southwest Quarter of the Northeast Quarter and the Southeast Quarter of the Northwest Quarter of Section 10, Township 60 North, Range 38 West, see record for full description. Tract 6: The Southwest Quarter of the Southeast Quarter of Section 32; the East 25 acres of the Southeast Quarter of the Southwest Quarter of Section 32, except that part of said 25 acre tract lying on the Westerly side of the public road; all in Township 60 North of Range 38 West, of the 5th P.M. Tract 7: The Northeast Quarter of the Southeast Quarter of Section 10, except the north 30 feet thereof; and except a tract described as commencing at the East Quarter corner of Section 10, Township 60 North, Range 38 West of the 5th P.M., see record for full description. Tract 8: (A) The East 120 acres of the Northeast Quarter of Section 18, Township 59 North, of Range 38 West of the 5th P.M., see record for full description. (B) The West 100 acres of the Southeast Quarter of Section 17, Township 59, Range 28, except a tract commencing 60 rods West of the Northeast corner of said Southwest Quarter, see record for full description. Tract 9: All of Lot 1 and the Southwesterly Half of Lot 2 of Southview Estates, a subdivision located in the Northeast Quarter of Section 34, Township 60, Range 38, as shown by the recorded plat thereof, all situate, lying and being in Holt County, Mo.

Steven Powell and Patricia K. Powell to Clayton A. Kurtz and Amanda K. Kurtz, Mound City, MO: A tract of land in the West Half of the Northwest Quarter in Section 31, Township 61, Range 37.

Larry Shelby Jackson and Marilyn Jean Jackson to Betty Ann Jackson, Hancock, IA: The Southeast Half of Lot 2 and all of Lot 3, all in Block 1, in T.B. Wards Addition in the city of Craig.

REL Farms, LLC, to Westfall

Brothers, LLC, Kansas City, MO: Tract 1: The Southeast Quarter of the Southwest Quarter of Section 27, Township 62, Range 39, see record for full description. Tract 2 (easement of ingress and egress of the benefit of Tract 1): An easement of ingress and egress along the North 100 feet and the South 100 feet of the following described parcel of land: A tract of land in the Northwest Quarter of Section 34, Township 62 North, Range 39 West, described as follows: Beginning at the Southwest corner of the Northwest Quarter of said Section 34, said point being on the centerline of the county road, see record for full description. Tract 3: A tract of land situate in Sections 28, 29, 32 and 33 of Township 62 North, of Range 39 West of the 5th P.M., see record for full description.

Jennifer Lynn Shaw and Steven James Shaw to David A. Shaw, Sr., Falls City, NE: All of Lot 41 in Field's Shady Rest Subdivision and a tract of land in the Southwest Quarter in Section 31, Township 61, Range 39.

David A. Shaw, Sr., to Karlene Soriano, Dunbar, NE: All of Lot 41 in Field's Shady Rest Subdivision and a tract of land in the Southwest Quarter in Section 31, Township 61, Range 39.

Timothy Hays to Ex Parte: All of Lots 3 and 6 in Block 1 in the original town of Oregon.

James Stansbury, by the Holt County Collector; Kenneth Stansbury, by the Holt County Collector; Daniel Davis, by the Holt County Collector; Patricia Gillenwater, by the Holt County Collector; and Diana Hoffman, by the Holt County Collector; to Kevin Bollman, St. Joseph, MO: A 1.50 acre tract of land in O'Fallon View Addition beginning at the Southwest corner in Lot 54, see record for full description.

James Robert Gallagher, Michelle J. Gallagher, William Dean Gallagher and Vera Gallagher to Tim Westcott and Tina Westcott, Skidmore, MO: The Harmony School tract, located in the Northwest Quarter of the Northwest Quarter of Section 26, Township 63, Range 38, see record for full description.

Connie S. Davis, by the Holt County Collector; to Kathy L. Dye, Maitland, MO: All of Lots 6, 7 and 8 in Block 4 in Barnard's Addition in the city of Maitland.

Jerry Rowlett and Janice Rowlett to Jerry Rowlett, T.O.D., and Janice Rowlett, T.O.D., Ottumwa, IA: All of Grantors' undivided one-half interest in: All of the North One-Half of the Northeast Fourth of Section 4, Township 62, of Range 38 West of the 5th P.M., see record for full description.

Kerri Boyd to Kerri Boyd and Nathan Boyd, Mound City, MO: All of Grantors' undivided one-half interest in: All of the North One-Half of the Northeast Fourth of Section 4, Township 62, of Range 38 West of the 5th P.M., see record for full description.

Clarrisa J. Tunnell to Brandi Oliveira and Jeff Oliveira, Oregon, MO: A tract commencing at the West Quarter corner of Section 26, Township 60 North, Range 38 West, see record for full description.

LEGAL NOTICES



TRUSTEE'S SALE

In Re: Erik D. Surgnier and Maria L. Surgnier, Husband and Wife, Trustee's Sale:

For default in payment of debt and performance of obligation secured by Deed of Trust executed by Erik D. Surgnier and Maria L. Surgnier, Husband and Wife, dated July 7, 2006, and recorded in the Office of the Recorder of Deeds of Holt County, Missouri, in Book 373, Page 99, the undersigned Successor Trustee, at the request of the legal holder of said note will, on Monday, October 6, 2014, between the hours of 9:00 a.m. and 5:00 p.m. (at the specific time of 3:30 p.m.), at the north front door of the courthouse, City of Oregon, County of Holt, State of Missouri, sell at public vendue to the highest bidder for cash the following described real estate, described in said Deed of Trust, and situated in Holt County, State of Missouri, to wit:

LOT 1 OF RAMSEY'S SUBDIVISION OF A PART OF THE NORTHEAST FRACTIONAL QUARTER OF SECTION 36, TOWNSHIP 61, RANGE 40, ALSO A TRACT OF LAND ABUTTING THERETO ON THE EASTERLY SIDE AND EXTENDING SOUTHEASTERLY THEREFROM TO THE WATER OF WHAT IS COMMONLY KNOWN AS BIG LAKE, THE NORTHERLY LINE OF SAID TRACT BEING BOUNDED BY A LINE TO COINCIDE WITH AN EXTENSION SOUTHEASTERLY OF THE NORTHERLY LINE OF SAID LOT [TRACT] AND THE SOUTHERLY LINE OF SAID TRACT BEING BOUNDED BY A LINE TO COINCIDE WITH AN EXTENSION SOUTHEASTERLY OF THE SOUTHERLY LINE OF SAID LOT, ALL IN THE VILLAGE OF BIG LAKE, HOLT COUNTY, MISSOURI,

subject to public roads and highways [the information contained in brackets has been added to more accurately reflect the legal description], to satisfy said debt and cost.

Millsap & Singer, P.C., Successor Trustee
612 Spirit Drive, St. Louis, MO 63005
(636) 537-0110

File No.: 162212.100614.330038 FC

NOTICE

Pursuant to the Fair Debt Collection Practices Act, 15 U.S.C. §1692(c)(b), no information concerning the collection of this debt may be given without the prior consent of the consumer given directly to the debt collector or the express permission of a court of competent jurisdiction. The debt collector is attempting to collect a debt and any information obtained will be used for that purpose.

PUBLISH ON: 9/11/2014, 9/18/14, 9/25/14, 10/2/14

10/4tc

NOTICE OF PUBLIC HEARING Thursday, October 9, 2014 at Mound City City Hall

TOPIC: Tax Increment Financing (TIF) District Report

The Mound City Board of Aldermen will hold a public hearing on Thursday, October 9, 2014, at 7 p.m., at City Hall for discussion and reporting on the status of the Mound City TIF redevelopment plan and each redevelopment project.

11/4tc

SEEKING SEALED BIDS

The Holt County Commission is seeking sealed bids for the installation of 911 Road Signs throughout the county. Bidders shall provide all labor and equipment necessary to install signs. Signs, posts and brackets will be provided by the county. Bidders are required to provide a Federal E-verify certificate and a Certificate of Insurance Liability, including worker's compensation coverage, at the time of bid.

Bids must be submitted in a sealed envelope marked "911 Sign Installation" to: Holt County Clerk, 102 W. Nodaway St., Oregon, MO 64473.

All responses must be received prior to the opening on Monday, September 29, 2014, at 11 a.m. in the County Commission Room of the courthouse in Oregon.

Holt County reserves the right to accept and/or reject any and all bids and to award the contract to the bidder whose bid is considered in the best interest of Holt County. For detailed bid specifications, contact the Holt County Clerk's Office at 660-446-3303. 10/2tc

REQUEST FOR BIDS

The City of Mound City is seeking bids for a 2015 Police Patrol vehicle. For bid specifications contact John Panning, Police Chief, at 660-442-3636; or Patsy Smith, City Clerk, at 660-442-3447. Mail or deliver bids to City Hall, 205 E. 6th St., Mound City, MO 64470 in a sealed envelope marked "Patrol Vehicle Bid". Bids will be accepted until 10 a.m. on Thursday, September 25, 2014, and will then be publicly opened and read aloud. The city reserves the right to reject any and all bids and to waive informalities therein. 11/1tc

NOTICE OF ANNUAL MEETING FOR LITTLE TARKIO DRAINAGE DISTRICT

Landowners' annual meeting of Little Tarkio Drainage District No. 1 will be held at Phil Morris' Shop on Hwy. 59, Thursday, September 18, at 7:00 p.m. for the purpose of electing one supervisor for a term of five years, assessment of the benefit tax and any other legal business that may properly come before the meeting.

Phil Morris, President
Jim Ohlensehlen, Secretary

10/2tc

Mound City
NEWS

CLASSIFIED
ADVERTISING
CALL 660-442-5423

Adolescent proxy access now available through St. Francis' health record system

Patients of St. Francis Hospital & Health Services in Maryville, Mo., between the ages of 12 and 18 can now be included in the family proxy access through the SSM Health Care's electronic health record system, MyChart, allowing a parent or legal guardian to view their medical information. SSM has enhanced its proxy functionality by providing the ability for a legal guardian, such as a parent, to have proxy access to an adolescent patient's MyChart information.

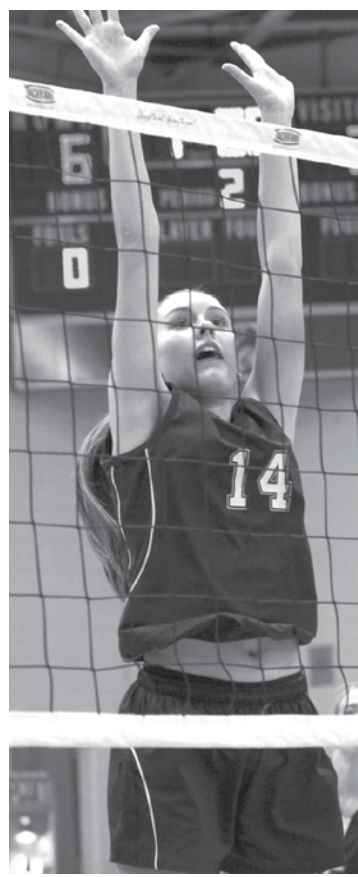
Prior to September 9, 2014, MyChart was available to adult patients, proxies for children from birth to 11 years of age and through special agreement. Now, a legal guardian may be proxy for a patient from the age of zero up until the patient turns 18 years old. At 18 years, the patient becomes the sole owner of the access and parent's proxy is ended.

Before the new proxy was put into place, federal and state

laws were reviewed by legal and compliance departments at SSM to ensure the adolescent patient proxy access supports laws and regulations. Some information has been blocked for the adolescent patient due to legal or discreet nature of the situation: sexually transmitted diseases, including HIV, test results; drug and alcohol abuse test results and counseling records; mental health records; and pregnancy test results (not a legal requirement yet requested by providers).

The adolescent proxy access applies to all patients seen within the St. Francis organization including the hospital and physician clinics in Maryville, Savannah, Mo., Albany, Mo., and Bedford, Ia.

For more information regarding MyChart access, please contact the St. Francis Community Relations and Development Office at (660) 562-7933.



Mae Sanders, Mound City Lady Panther - Goes for the spike in 275 Conference play with Rock Port, Mo., on Thursday, September 11, in Mound City.

Mound City sophomore Savannah Derr - Prepares to block in the conference volleyball match with Rock Port, Mo., at Mound City on Thursday, September 11.

Tess Phillips, Mound City sophomore - Bumps the ball up for the Lady Panthers in conference action with Rock Port, Mo., on Thursday, September 11. Phillips recorded nine assists in the contest.

Varsity Lady Panthers drop conference match to Lady Jays

The Lady Panthers of Mound City hosted the Lady Blue Jays of Rock Port, Mo., at the Mound City gym on Thursday, Sept. 11, and in 275 Conference varsity action, Mound City suffered a defeat in two games.

"It was a tough loss, Mound City Coach Kayla Schoonover said. "We got off to a slow start

200th win recognition for Coach Kayla Schoonover

in the first game, [and we] fought hard in the second game but just came up short."

In the junior varsity match, which had "A" and "B" team action, Rock Port also claimed the victory in two close games over Mound City.

The Mound City "A" team dropped its match in two games, while the Mound City "B" team defeated the Lady Blue Jays in one game.

Commenting on the junior high "A" match, Coach Schoonover said, "The girls just couldn't get past those first game jitters."

As for the "B" match, "I was really pleased with how the girls came out and played their first game of the season," Schoonover said.

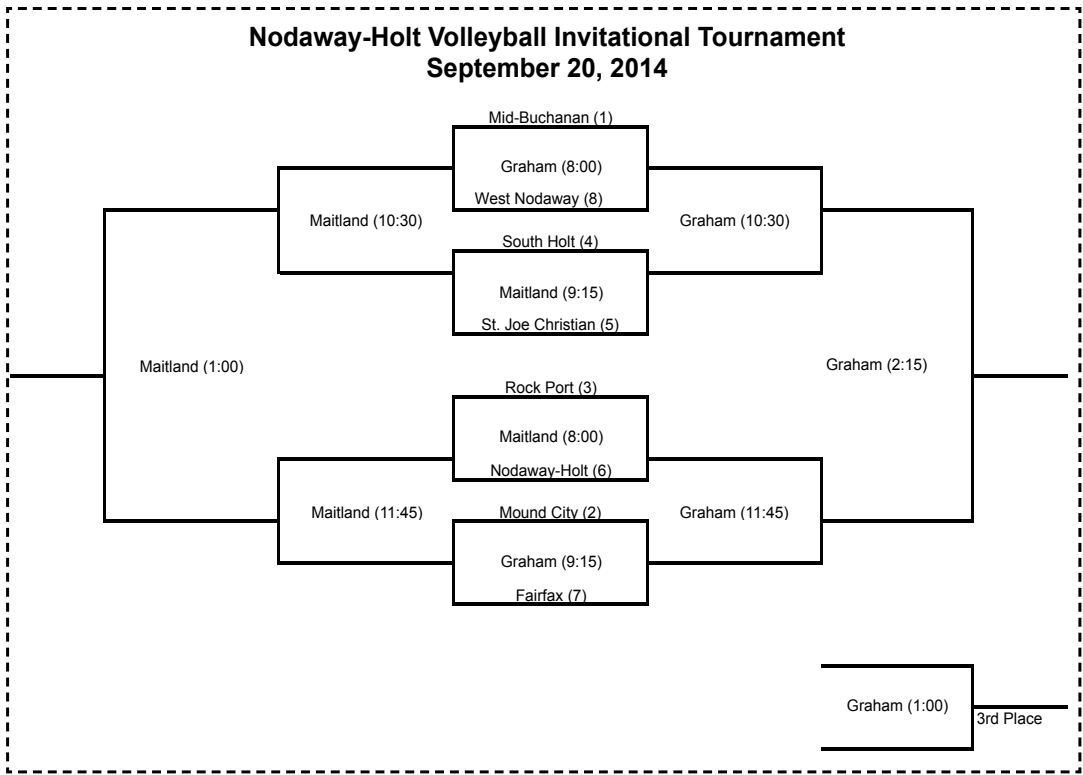
Prior to the matches on Sept. 11, the Mound City Lady Panthers presented their coach, Kayla Schoonover, with a bouquet of flowers in recognition of her 200th varsity volleyball win. She achieved the milestone with the varsity win on Thursday, Sept. 4, at the South Holt Gym in Oregon, Mo.



Mound City Lady Panther Deanna Clayton - Serves to the Rock Port, Mo., Lady Blue Jays on Thursday, Sept. 11, in Mound City. Clayton scored on five of six serves in the junior varsity contest.

Nodaway-Holt to host varsity volleyball tournament

The Graham, Mo., and Maitland, Mo., gymnasiums will be busy this Saturday, Sept. 20, as Nodaway-Holt will be hosting an eight-team varsity volleyball tournament. Play will begin at 8 a.m. at both sites, and the championship match is set for 2:15 p.m. at Graham. Schools participating include: Mid-Buchanan (first seed); Mound City (second seed); Rock Port (third seed); South Holt (fourth seed); St. Joseph Christian (fifth seed); Nodaway-Holt (sixth seed); Fairfax (seventh seed); and West Nodaway (eighth seed). The complete tournament bracket is as follows:



Falls City, Neb., Elks Lodge #963 remodeling project to begin mid-October

The Falls City, Neb., Elks Lodge #963 recently received word that a planned remodeling project has been approved by the Grand Lodge in Chicago, Ill. The local Elks Lodge hopes to begin construction in mid-October 2014.

According to Rob Gerweck, Chairman of Trustees, the fundraising group has raised a substantial portion of the total funds needed. He is confident that, due to support for the remodeling project, members will be able to raise the rest of the money needed.

"A lot of people have shown great faith in this project by investing their own money," Gerweck said. "They remember the glory days of the Elks Lodge when the place was packed for lunch and dinner and held special events upstairs nearly every weekend. We believe that the Elks Lodge has a place in the future of Falls City as well. We are excited that the Grand Lodge has given its approval so that we can move forward with construction. We hope that those who have not donated will see the progress and be encouraged to do so."

The fundraising drive began in February 2014. Committee members Renee Kopf, Cathy Scholl, Ben Hullman, Dan Simon and

Jerry Joy worked tirelessly alongside Gerweck, manning telephones, making cold calls and visiting former and current members.

"I can't say enough about their efforts," Gerweck said. "No one can do this type of project alone. It has taken a team of hardworking individuals to move this transformation forward."

The blueprints for the remodeling project were submitted by Ayars & Ayars, Inc. and Arch+tects Etc. of Lincoln, Neb. Proudly, many local contractors will be used for this project. The project will completely remodel the first floor interior; the current dining room will become the lounge, and the current lounge and back room area will become an open banquet facility that can be partitioned off to accommodate smaller meetings.

"We are very interested in booking many events, such as weddings, reunions, meetings,

and other special occasions," Gerweck said. "Our new proposed facility will be able to accommodate up to 300 people. Our current facility is adequate but is not user friendly for many patrons. Our stairs prohibit a lot of people from attending events. We hope to rectify that situation by moving the banquet facility downstairs."

An architect's rendering of the proposed plan is hanging on a wall in the Elks Lodge at 1417 Stone St. in Falls City. Anyone who is interested in visualizing the future of the Elks Lodge is encouraged to stop by and take a look.

The fundraising committee would also like to recognize the volunteers who helped make the telethon calls and all of the donors who have helped to make this vision a reality. The committee looks forward to speaking with anyone who would still like to contribute to the project.

St. Francis Eye Clinic
Sudarsan Chavala, M.D.

Eye exam for glasses & contacts
Cataract and implant surgery • Laser Surgery
Optical stores attached

Maryville Office: 114 E. South Hills Dr. Maryville, MO (660) 562-2566

Toll Free 1-800-326-1399

NEW Albany Office: 115 N. Smith St. Albany, MO (660) 726-3171

Welcomes All Eye Care Plans • Accepts Medicaid • Medicare Participating Physician

VARSITY VOLLEYBALL
MOUND CITY vs. ROCK PORT
Thursday, September 11, 2014 - Mound City, MO

Score	1st	2nd	3rd
Mound City	18	28	-
Rock Port	25	30	-

MOUND CITY (V) STATISTICS
MOUND CITY PANTHERS (V) - 7-2-1 - 1-1 IN 275 CONFERENCE

PLAYER	SERVES	ACES	HITS	ASSISTS	DIGS	BLOCKS
Emily Wedlock	8/9	2	8	-	1	-
Tess Phillips	5/5	-	2	9	1	1
Lena Ashford	5/7	1	-	-	4	-
Mae Sanders	4/5	-	2	1	-	-
Kenzie Ashford	5/5	1	1	1	2	-
Sydney Ireland	6/8	2	2	-	-	-
Hillary Russell	6/6	-	-	-	-	-
Savanah Derr	-	-	1	-	1	-

JUNIOR VARSITY VOLLEYBALL
MOUND CITY vs. ROCK PORT
Thursday, September 11, 2014 - Mound City, MO

Score	1st	2nd	3rd
Mound City	21	21	-
Rock Port	25	25	-

MOUND CITY (JV) STATISTICS
MOUND CITY PANTHERS (JV) - 1-3

PLAYER	SERVES	ACES	HITS	ASSISTS	DIGS	BLOCKS
Bayleigh Portman	7/8	2	-	5	1	-
Kimberly Corbin	0/3	-	5	-	1	-
Deanna Clayton	5/6	1	-	-	5	-
Gabby Heck	5/5	-	-	-	-	-
Kameron Freemeyer	5/6	-	1	-	-	-
Jocelyn Clayton	6/7	1	1	-	-	-
Savanah Derr	7/7	1	-	-	-	-
Kaitie Smith	0/1	-	1	-	-	-

JUNIOR HIGH "A" VOLLEYBALL
MOUND CITY vs. ROCK PORT
Thursday, September 11, 2014 - Mound City, MO

Score	1st	2nd	3rd
Mound City	19	16	-
Rock Port	25	25	-

MOUND CITY (JH "A") STATISTICS
MOUND CITY PANTHERS (JH "A") - 0-1

PLAYER	SERVES	ACES	HITS	ASSISTS	DIGS	BLOCKS
Gracie Caton	1/2	-	-	-	1	-
Hannah Wedlock	6/7	2	-	1	-	-
Paige Quilty	6/8	3	2	-	2	-
Emma Gibson	4/6	1	1	-	-	-
Victoria Nauman	3/3	-	-	1	-	-
Emma Derr	3/4	1	-	-	-	-
Jillian Steins	-	-	1	-	-	-
Destiny Grover	1/2	1	-	-	-	-

JUNIOR HIGH "B" VOLLEYBALL
MOUND CITY vs. ROCK PORT
Thursday, September 11, 2014 - Mound City, MO

Score	1st	2nd	3rd
Mound City	25	-	-
Rock Port	17	-	-

MOUND CITY (JH "B") STATISTICS
MOUND CITY PANTHERS (JH "B") - 1-0

PLAYER	SERVES	ACES	HITS	ASSISTS	DIGS	BLOCKS
Kyrstin Peters	7/8	2	-	-	1	-
Cassidy Wennihan	-	-	1	-	1	-
Destiny Grover	3/4	1	3	1	-	-
Jillian Steins	1/2	1	2	-	1	-
Maggie Baker	2/2	-	1	-	-	-
Daniell Brandon	2/2	1	1	-	-	-
Sianna Meadows	-	-	-	-	1	-
Desiree Hufford	3/3	3	-	-	1	-
Dara Young	-	-	-	-	1	-



Junior Emily Wedlock - Plays the net for Mound City in the 275 Conference match-up with Rock Port, Mo., in Mound City on Thursday, Sept. 11.

HERITAGE INVESTMENTS
HINDE ASSET MANAGEMENT

Investment Management*
Financial Planning*

Dave Hinde, CRPC®

Scott Hinde, CFP®

David Richmond

2407 North Woodbine Road, St. Joseph, MO
816-364-4900 • www.heritage-inv.com

*Securities, insurance, and advisory services offered through SagePoint Financial, Inc., member FINRA/SIPC. Heritage Investments is not affiliated with SagePoint Financial, Inc., or registered as a broker-dealer/investment advisor.

Lady Panthers suffer two losses in tri-match

The Lady Panthers of Mound City traveled to Dearborn, Mo., on Monday evening, September 15, to compete in a non-conference volleyball tri-match with North Platte and South Holt. The Mound City team fought hard against North Platte but lost by four points in the third game. Out of steam for the match with South Holt, the Lady Panthers conceded defeat to the South Holt Lady Knights in two games.

VARSITY VOLLEYBALL

MOUND CITY vs. NORTH PLATTE

Monday, September 15, 2014 - Dearborn, MO

Score	1st	2nd	3rd
Mound City	16	25	21
North Platte	25	15	25

MOUND CITY (V) STATISTICS

MOUND CITY PANTHERS (V) - 7-3-1 - 1-1 IN 275 CONFERENCE

PLAYER	SERVES	ACES	HITS	ASSISTS	DIGS	BLOCKS
Emily Wedlock	11/11	3	9	-	3	-
Tess Phillips	7/8	-	2	8	3	-
Lena Ashford	11/12	1	1	-	3	-
Mae Sanders	4/4	-	2	-	3	-
Kenzie Ashford	7/8	1	1	1	4	1
Sydney Ireland	6/8	-	2	-	1	2
Hillary Russell	4/4	-	-	-	1	-
Savannah Derr	-	-	2	-	-	-

VARSITY VOLLEYBALL

MOUND CITY vs. SOUTH HOLT

Monday, September 15, 2014 - Dearborn, MO

Score	1st	2nd	3rd
Mound City	16	18	-
South Holt	25	15	-

MOUND CITY (V) STATISTICS

MOUND CITY PANTHERS (V) - 7-4-1 - 1-1 IN 275 CONFERENCE

PLAYER	SERVES	ACES	HITS	ASSISTS	DIGS	BLOCKS
Emily Wedlock	4/5	1	9	-	4	-
Tess Phillips	1/3	-	2	5	1	-
Lena Ashford	5/6	-	-	-	3	-
Mae Sanders	5/5	-	1	-	1	-
Kenzie Ashford	4/4	-	2	-	3	-
Sydney Ireland	1/3	-	1	-	-	1
Hillary Russell	4/4	-	-	-	-	-

South Holt evens conference record with win over Fairfax

The South Holt Lady Knights evened their varsity record in the 275 Conference to one win, one loss, with a victory over the Fairfax (Mo.) Lady Bulldogs on Thursday, Sept. 11, in Fairfax. The match went three games, with South Holt claiming the win.

VARSITY VOLLEYBALL

SOUTH HOLT vs. FAIRFAX

Thursday, September 11, 2014 - Oregon, MO

Score	1st	2nd	3rd
South Holt	21	25	25
Fairfax	25	15	17

SOUTH HOLT (V) STATISTICS

SOUTH HOLT KNIGHTS (V) - 4-2 - 1-1 IN 275 CONFERENCE

PLAYER	ACES	HITS	ASSISTS	DIGS	BLOCKS
Emily Cox	-	14	1	1	4
McKenzi Prussman	2	-	-	2	-
Rachel Binder	1	-	20	2	1
Ashley Hunziger	3	4	-	-	1
Emma Ezzell	2	-	-	-	-
Hailey Markt	1	2	-	1	-
Shelby Eaton	-	1	-	-	-



Nodaway-Holt sophomore, Brody Day (#18), on his knee in the center - Makes the stop for the Trojans against the East Atchison Wolves on Friday, September 12, in Graham, Mo. Nodaway-Holt teammate Cody Schniedermeier (#34), at left, follows the action.



#24 Zach Walker, Nodaway-Holt sophomore - Runs the ball in 275 Conference action with the East Atchison Wolves on Friday, Sept. 12, in Graham, Mo.

Nodaway-Holt Trojans suffer homecoming loss to East Atchison Wolves

The Nodaway-Holt varsity football Trojans dropped to one win, three losses, on the season with a 48-0 loss to the East Atchison Wolves on Friday, Sept. 12, in Graham, Mo. East Atchison, however, the newly co-oped team of Tarkio and Fairfax, Mo., marked its first win of the season against Nodaway-Holt.

Nodaway-Holt Coach Josh Petersen commented on the conference loss, "We can't expect to win with less than 60 yards of total offense. We struggled from the start of the game and could never get into a rhythm. Hopefully, we get in a good week of preparation for a tough Albany team."

Nodaway-Holt will travel to Albany, Mo., to take on the Albany Warriors on Friday, Sept. 19. Game time is 7 p.m.



Nodaway-Holt Trojan Cody Schniedermeier (#34), third from left - Wraps up an East Atchison Wolf for the tackle in varsity football action in Graham, Mo., on Friday, Sept. 12. The Trojans lost their homecoming game to the Wolves by a score of 48-0.

VARSITY FOOTBALL

NODAWAY-HOLT vs. EAST ATCHISON

Friday, September 12, 2014 - Graham, Mo.

Scoring	1st	2nd	3rd	4th	Final
Nodaway-Holt	0	0	-	-	0
East Atchison	20	28	-	-	48

NODAWAY-HOLT STATISTICS

NODAWAY-HOLT TROJANS - 1-3 - 1-2 IN 275 CONFERENCE

Three-game match for Nodaway-Holt goes to Tarkio

The Nodaway-Holt Lady Trojans hosted the Tarkio Lady Indians in volleyball action on Thursday, Sept. 11, in Graham, Mo. The varsity match went three games, but the Lady Indians claimed the final victory.

VARSITY VOLLEYBALL

NODAWAY-HOLT vs. TARKIO

Thursday, September 11, 2014 - Graham, MO

Score	1st	2nd	3rd
Nodaway-Holt	25	19	15
Tarkio	12	25	25

NODAWAY-HOLT STATISTICS

(STATISTIC LEADERS IN THE MATCH)

PLAYER	BLOCKS	ACES	HITS	ASSISTS	DIGS
Frankie Lemar	-	-	-	13	-
Jaylee Holmes	-	-	-	-	9
Jordan Long	-	9	-	-	-
Macie Bohannon	8	-	11	-	-

Nodaway-Holt Lady Trojans meet Knights in non-conference action

The Nodaway-Holt Lady Trojans traveled to Oregon, Mo., on Monday, Sept. 8, to meet the South Holt Lady Knights in non-conference volleyball action. Nodaway-Holt lost the varsity match in two games.

VARSITY VOLLEYBALL

NODAWAY-HOLT vs. SOUTH HOLT

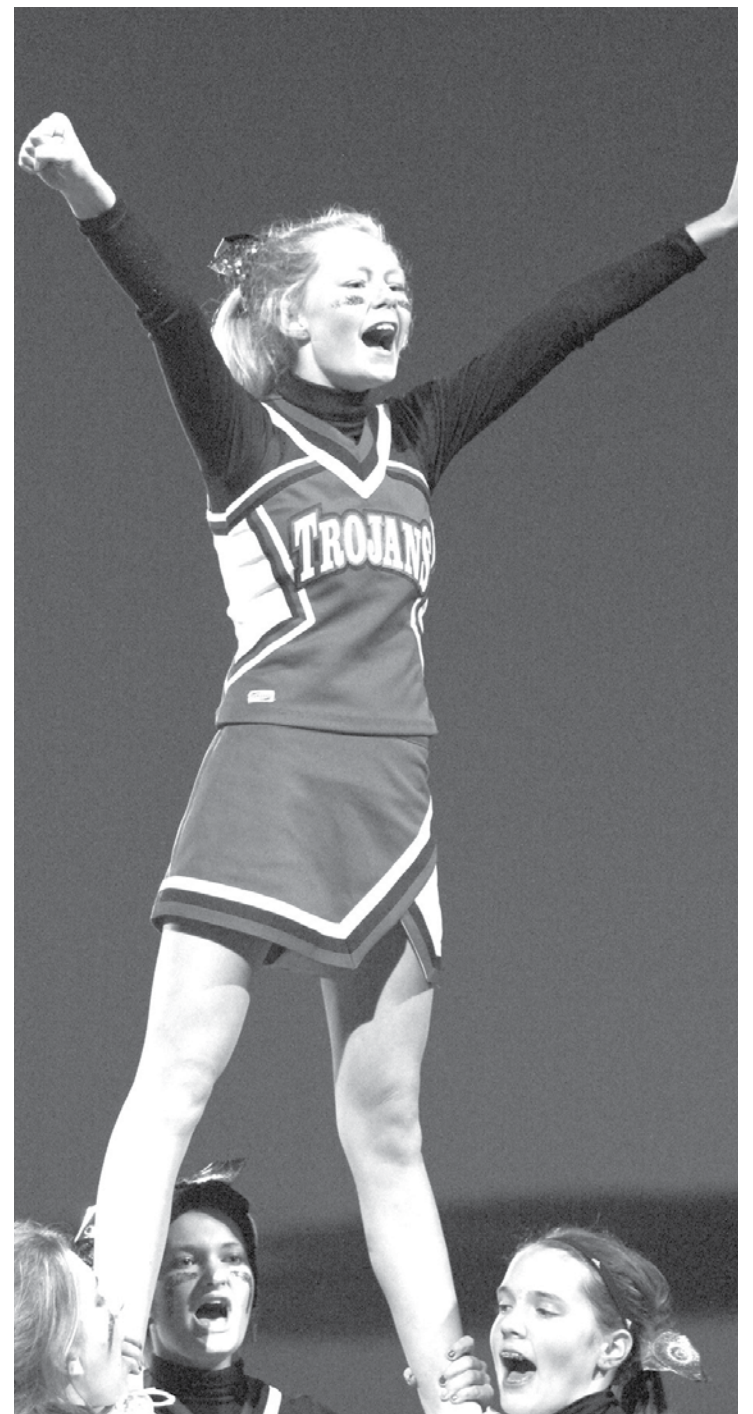
Monday, September 8, 2014 - Oregon, MO

Score	1st	2nd	3rd
Nodaway-Holt	16	18	-
South Holt	25	25	-

NODAWAY-HOLT STATISTICS

(STATISTIC LEADERS IN THE MATCH)

PLAYER	BLOCKS	ACES	HITS	ASSISTS	DIGS
Bailea Plummer	-	2	-	1	5
Frankie Lemar	-	-	-	1	-
Macie Bohannon	13	-	3	-	-



Sophomore Nicole Albertson - Cheers to the crowd during a halftime performance at the homecoming football game in Graham, Mo., on Friday night, Sept. 12.

CRAIG COMMUNITY CALENDAR

(ITEMS MUST BE AT THE MOUND CITY NEWS BY NOON MONDAY)

- September 18 - Community Baby Shower at Northwest Health Services in Mound City - 3-5 p.m.
- September 18 - Mound City JH/JV/V Volleyball vs. Nodaway-Holt at Graham, MO - 5:30 p.m.
- September 19 - Mound City Varsity Football vs. Rock Port at Rock Port, MO - 7 p.m.
- September 20 - Mound City Varsity Volleyball at Nod.-Holt Tourney at Graham, Mo. - TBA
- September 20 - The Jeremiah Johnson Band at the State Theater in Mound City - 7 p.m.
- September 22 - No School at Craig R-3 - Teacher In-Service
- September 22 - Mound City JH/JV Football at Stanberry - 5 p.m.
- September 22 - Mound City JV/V vs. Sacred Heart at Mound City - 6 p.m.
- September 23 - Mound City Cross Country at Benton in St. Joseph, MO - 4 p.m.
- September 23 - Mound City JV/V at Fairfax, Mo. - 5:30 p.m.
- September 25 - Mound City JH/JV/V at St. Joseph, Mo., Christian - 5:30 p.m.

See Us For All Your Banking Needs

- FREE Checking • FREE Internet Banking
- NOW Accounts • Savings Accounts • CD'S
- LOANS At Competitive Rates for Homes, Cars, Etc.

Citizens Bank & Trust

PO Box 70 PO Box 38
Rock Port, MO 64482 Craig, MO 64437
660-744-5333 660-683-5333

904 State St.
Mound City, MO 64470 660-442-3800

Member FDIC

NEW 2013 FORD F-150 LARIAT PLATINUM 4X4
3.5L V6 ECOBOOST ENGINE

\$50,300
\$2,000 Rebate
\$1,500 F.C. Rebate
\$1,500 T.I. Rebate
\$45,300

HULLMAN'S FORD

402-245-4413

www.hullmansford.com

NEW 2013 FORD F-150 LARIAT SUPERCREW 4X4
3.5L V6 ECOBOOST ENGINE

\$47,560
\$2,000 Rebate
\$1,500 F.C. Rebate
\$1,500 T.I. Rebate
\$42,560



Mound City Panther Dylan Faller (#25), right - Runs the ball with offensive protection from teammate Timothy Runnels (#41), left, in Mound City's homecoming contest with South Nodaway on Friday, Sept. 12. Faller rushed 19 times for 103 yards, while Runnels carried the ball twice for five yards.



Jaden Gillenwater (#24), left, and Blake Shifflett (#9), center, with assistance from Kyree Howell (#34), right - Make the tackle for the Mound City Panthers. The Panthers lost the non-conference game to the South Nodaway Longhorns 34-0 on Friday, Sept. 12, in Mound City.



Mound City Panther Matthew Poppa - Carries the ball in junior high action with Worth County at Ceglenski Field in Mound City on Monday, Sept. 15. The Worth County Tigers claimed the victory over the Panthers.



Austin Pankau, Mound City freshman Panther - Looks for running room in the junior varsity game with Worth County at Mound City on Monday, Sept. 15. The Panthers put up a good fight but lost in overtime to the Tigers of Worth County.

Mound City Panthers suffer homecoming loss

The Mound City Panthers suffered a homecoming loss to the South Nodaway Longhorns on Friday night, Sept. 12. Unfortunately, the Panthers failed to put any points on the scoreboard as they fell to the Longhorns by a score of 34-0. The non-conference game was played at Ceglenski Field in Mound City following coronation ceremonies for the Mound City and Craig high schools.

The Panthers will need to regroup for this Friday night's game when they travel to Rock Port, Mo., to meet the Blue Jays in what should be a strong 275 Conference matchup. Game time is 7 p.m.



Nathan Hayes (#98), senior at Mound City, right - Brings down the South Nodaway Longhorn in non-conference action on Friday, Sept. 12, in Mound City. Helping Hayes on defense is senior teammate, Colton Smith (#91), left.



Mound City senior quarterback, Hayden Marris (#16) - Keeps the ball for yardage against South Nodaway in Mound City Homecoming action on Friday, Sept. 12, at Ceglenski Field in Mound City. Marris carried the ball 15 times for 60 yards in the contest and passed four times for 38 yards.



Mound City Panther Kyree Howell (with the ball) gets away from the Worth County defense - In junior varsity action on Monday, Sept. 15, in Mound City. Tied after regulation, the game went into overtime. The Mound City Panthers tried to hang on, but the victory went to the Worth County Tigers.

Mound City Junior High Panthers tie with Rock Port

The Mound City Junior High Panthers traveled to Rock Port, Mo., for their first game of the season on Monday, Sept. 8. With the teams evenly matched, the game ended in a tie, 14-14, after four quarters of play. The leading rushers for Mound City in the contest were Matthew Poppa and Dylan Carden.

JUNIOR HIGH FOOTBALL

MOUND CITY vs. ROCK PORT

Monday, September 8, 2014 - Rock Port, Mo.

Scoring	1st	2nd	3rd	4th	Final
Mound City	0	0	6	8	14
Rock Port	8	0	0	6	14

MOUND CITY JH STATISTICS

Touchdowns

Matthew Poppa - 2 TDs

Interceptions/Fumble Recoveries/Blocked Punts

Dylan Carden - 1 Fumble Recovery

Tackles

Matthew Poppa - 10, Dylan Carden - 6, Dylan Marris - 5, TJ Hopkins - 5, Blake Hayes - 4, Parker Staples - 2, Treyton Plummer - 1

VARSITY FOOTBALL

MOUND CITY vs. SOUTH NODAWAY

Friday, September 12, 2014 - Mound City, Mo.

Scoring	1st	2nd	3rd	4th	Final
Mound City	0	0	0	0	0
South Nodaway	6	8	12	8	34

MOUND CITY STATISTICS

MOUND CITY PANTHERS - 3-1 - 3-0 IN 275 CONFERENCE

Passing

Hayden Marris - 4 for 8 - 48 Yards

Rushing

Dylon Faller - 19 for 103 Yards

Hayden Marris - 15 for 60 Yards

Kyler Miles - 4 for 9 Yards

Timothy Runnels - 2 for 5 Yards

Kyree Howell - 4 for 0 Yards

Receiving

Jaden Gillenwater - 3 for 35 Yards

Chandler Wilson - 1 for 13 Yards

Kicking/Punting

Jaden Gillenwater - 6 Punts for 190 Yards

Total Offensive Yards

214 Yards (48 Passing, 166 Rushing)

Kick-Off/Punt Returns

Dylon Faller - 4 Kickoff Returns for 72 Yards

Timothy Runnels - 1 Kickoff Return for 8 Yards

Blake Shifflett - 1 Interception Carry for 13 Yards

Interceptions/Fumble Recoveries/Blocked Punts

Kyler Miles - 1 Fumble Recovery

Blake Shifflett - 1 Interception

Tackles

Hayden Marris - 11, Jaden Gillenwater - 11, Blake Shifflett - 9, Colton Smith - 8, Nathan Hayes - 6, Kyler Miles - 5, Timothy Runnels - 5, Austin Pankau - 3, Kyree Howell - 2, Chandler Wilson - 1

HELP WANTED

HELP WANTED

TRACTOR/TRAILER DRIVER
to haul grain short distances.
Competitive wages.

Contact Ivan Kent with Ideker Farms
at 816-387-3048.

BREDEAUX PIZZA NOW HIRING

Applications and interviews at 1006 1/2 State St.
Thursday, September 18 & Friday, September 19
1 p.m. to 6 p.m. both days in Mound City.
(Prior pizza restaurant experience helpful.)

HELP WANTED

Citizens Bank & Trust is accepting applications for a **Part-Time Teller Position**. This position could possibly be split between the Mound City & Craig locations. This individual should be detailed, organized, and have effective communication and computer skills.

Applications will be accepted through Friday, September 19, and may be picked up at the Mound City or Craig locations. Call 660-442-3800 or 660-683-5333 with questions.

904 State St.
Mound City, MO 64470

105 S. Main St.
Craig, MO 64437

Member FDIC

HELP WANTED

Full-Time Position Available
OUTDOOR YARD HELP
CDL required. Entails people skills,
stocking, lifting and delivery.

Apply
in
person at

MOUND CITY
LUMBER

Hours: Monday-Friday: 7:30 a.m.-5:00 p.m. • Saturday: 7:30 a.m.-4:00 p.m.
108 W. 7th St. • Mound City, MO • 660-442-5416

Scheduler/Patient Access Assistants - PRN

Northwest Health Services

Mound City, Savannah, St. Joseph & Oregon
Must possess computer skills, ability to multi-task;
no nights or holidays. 15% pay differential for PRN.

Send cover letter and resume to Northwest Health Services, PO Box 8612, St. Joseph, MO 64506; online at www.nwhealth-services.org; or fax to 816-232-2696. EOE. Northwest Health Services does not hire tobacco users.

Mound City
NEWS

CLASSIFIED
ADVERTISING
CALL 660-442-5423

HELP WANTED

Golden Triangle Energy in Craig, Missouri, has a maintenance position open. Job duties include maintaining, rebuilding, and cleaning of all equipment associated with the process, as well as much more. Required skills include some experience with welding, cutting, repairs, pump/instrument alignment, and some electrical work. Work hours are typically 7:30 a.m. to 4:30 p.m. with a once a month "On Call" weekend.

Competitive wages and full benefits are offered to our employees. Applications may be picked up at Golden Triangle Energy, 15053 Hwy. 111, Craig, MO, or online at www.goldentriangleenergy.com.



Weldon's Tree Service

Tree Trimming/Transplanting
Tree and Stump Removal/Tree Shearing

Insured ~ Public Liability
Residential & Commercial

FREE ESTIMATES
(660) 582-3267

MARYVILLE GLASS AND LOCK

- Overhead doors and operators
- Custom residential replacement windows
- Complete locksmithing services
- Commercial - residential glass replacements



(660) 582-3131
5TH AND BUCHANAN, MARYVILLE

PROTECT YOUR INVESTMENTS!

1st Class
Carpports, Sheds & Garages
13 Colors To Choose From

Jim Salfrank Charla Salfrank
816-387-7175 660-442-3555

WE REPAIR WIND/FLOOD DAMAGE.



CLASSIFIED
ADVERTISING
CALL 660-442-5423



CLASSIFIED
ADVERTISING
CALL 660-442-5423

HELP WANTED

POSITION OPENING

The Holt Co. Soil & Water Conservation District is accepting applications for a District Technician.

This person will provide technical and clerical assistance to office staff, prepare engineering designs using an engineering design program and provide field assistance to landowners and contractors. General agricultural related knowledge is required. Qualifying applicants must have knowledge of computer systems and programs, the ability to operate technical field equipment (i.e. GPS, survey equipment, etc.), the ability to work outdoors under all types of weather conditions and travel over rough terrain. \$9-\$10/hr.- salary commensurate with experience. Advancement opportunity available.

Applications are available at the Holt Co. Soil & Water Conservation District office at 118 West Davis St., Mound City, or on our website at www.swcd.mo.gov/holt. Applications must be received no later than Monday, October 6, 2014.

The Holt SWCD is an Equal Opportunity Employer.

HELP WANTED

Waitress & Part-Time Cook

Apply in person at Squaw Creek Diner (south of Mound City) or call 660-442-3227

WANTED

Experienced semi truck driver for harvest. Must have clean driving record.

Bruce Biermann
660-491-5263
660-442-5262

THANK YOU/REMEMBERING

THANK YOU- I would like to thank everyone for the cards, flowers, food, and calls I received for my birthday. They were truly appreciated. God bless you all.

Irene Carroll
11/1tc

Thank you to all of my Mound City friends and family for your messages of sympathy, phone calls, food, flowers, hugs and visits after Jim's untimely passing. I cannot express in words the gratitude I feel for the support, prayers and love I have received from you all during my time of sorrow.

Tracey Garst

The Holt County Historical Society would like to say thank you for stopping by the Genealogy/Research Center in Mound City on Market Square Day and at the Autumn Festival in Oregon. Some stopped to pay dues, many shared a family story, and some offered artifacts they would like to donate. Over 80 signed in at the Genealogy/Research Center. Interest was high to help identify old school photos displayed at the Autumn Festival booth. Thanks so much for preserving Holt County history! That's what we're all about!

The Holt County Historical Society

Thank you to all for the food, flowers and cards while I was in the hospital and getting home. A special thanks to Deb and Rob for staying with me and family that kept things going here at home. Also a big thank you to Dr. Carpenter, the staff and nurses at Community Hospital-Fairfax for my good care. Thanks to all.

Joan Elms

Health Services



Professional
Passionate
Advanced
Attentive
...The difference is the care

To advertise here
call 660-442-5423

Baker Chiropractic & Rehab, LLC

1010 S. Main • Maryville, MO
(In the Village Plaza)
582-HELP (4357)
HOURS BY APPOINTMENT:
Monday-Friday

Tiffany Care Centers, Inc.

Quality Care from People Who Care
1105 State Street
PO Box 308
Mound City, MO 64470
www.tiffanycare.com
(660) 442-3128
An Equal Opportunity
Affirmative Action Employer

COTTON BODY SHOP & TOW SERVICE

Larry & Troy Cotton
Oregon, MO
Shop: 660-446-2008
Home: 660-446-2561

St. Francis Family Health Care

2016 South Main Street
Maryville, MO 64468
660-562-2525
www.stfrancismaryville.com



www.rogersrx.com
Online prescription refills available!
660-442-3355
800-962-0096
607 State St., Mound City

GENERAL AND FAMILY DENTISTRY

"We care about you and your smile."
C. R. James, Jr.,
D.D.S., P.C.

2107 Stone St., Falls City, NE
402-245-4122

TIMBERVIEW ROOFING

Chris Clement
Call:
816-390-3002 (Cell)
660-935-2219 (Office)
660-652-3033 (Home)

Herbs 'n' Whey

Natural Health Experts,
Premium Quality Products
1202 N. Main, Maryville, MO
660-582-6671
www.herbsnwheystore.com

FAMILY DENTISTRY

David Scarborough, D.D.S.
503 N. Broadway
Fairfax, MO 64446
660-686-2566

Mound City Medical Clinic

Amber Brown-Keebler, MD
Sherlyn Sipes, FNP
Medical: 660-442-5464

8 OZ. STEAK SUPPER

Maitland-Graham
Legion Post #256
Saturday, Sept. 20
Serving 4:30 p.m. - ?
\$12
Legion Building
In Maitland, MO
Child's Plate - \$3
Hot Dogs & Chips

Falls City Fitness Center

1723 Stone Street, Falls City, NE 68355
402-245-4606
Call today for more information on prices, discounts, & specials
Monday - Friday 5 a.m. - 7 p.m.
Saturday 8 a.m. - Noon

DR. THOMAS A. BARTEK

Chiropractic Physician
1717 Stone St., Suite #2
Falls City, NE 68355
402-245-3959
M, T, Th, F- 8 a.m. - 12 p.m. & 1 p.m. - 5 p.m.
Wed.- 8 a.m. - 12 p.m. • Sat.- 9 a.m. - 12 p.m.

Mound City Dental Clinic

Samantha Sutton, DDS
Monday through Thursday,
7 a.m.-5:30 p.m.
Committed to Care,
Available to All
1303 State Street • Mound City, MO 64470
www.nwhealth-services.org

Midland Empire Resources for Independent Living

20 Years
1.800.MERIL4U (800.637.4548)
www.meril.org
Providing resources for people with disabilities, people who are aging and people who need skilled nursing and therapy services in the comfort of their home.

MERIL
Angels Home Health
816.364.0900
www.angels-homehealth.org



Mound City Chiropractic
105 West 6th Street
Mound City, MO 64470
(660) 442-3105
Accepting new patients and walk-ins!

MONROE PRODUCE

Lots of Pumpkins
For Sale
All shapes & sizes!
18801 Holt 130
Craig, MO
660-683-5612

THANK YOU

We would like to thank our family, friends and neighbors for helping clean up the storm damage on Wednesday. The help, food and calls of concern were so greatly appreciated, we couldn't have done it without you. God has truly blessed us with wonderful people in our lives. Many thanks and may God bless you!
David and Rita Carroll

THANK YOU

Thank you for supporting our playground fundraiser through donations and purchases. The garage sale was a huge success.
Craig R-3 Elementary Student Council

CLASSIFIED ADVERTISING
CALL 660-442-5423



CLASSIFIED
ADVERTISING
CALL 660-442-5423

Classifieds

GET THE JOB DONE!
 Buy • Sell • Trade • Rent
 Hire • Thank You/Remembering • Legal Services

Call The Mound City News To Place Your Ad • 660-442-5423

MISCELLANEOUS

HOWARD'S GUN RE-PAIR- 12315 Hwy. 59, Craig, MO, 64437. 660-683-9401. 17/tfc

RAFTER CROSS VETERINARY SERVICES- In Mound City, Dr. Roy Wilson. 660-442-3101. 15/tfc

FREE END ROLLS- At the Holt County Publishing building north of Mound City on Hwy. 59. 31/tfc

FRESH VEGETABLES AND EGGS AT HARVEST HILL FARM- Call us to order tomatoes, potatoes, butternut squash, okra and eggs. Free delivery to Mound City. 660-442-0124. 11/1tp

GREG'S JEWELRY - Located at 307 E. 5th St. in Mound City, MO, offers hand engraving and glass etching. Call 660-442-3739 for all your jewelry needs. 11/1tc

EMU OIL- Arthritis and joint pain, burns and sunburns, aging skin, cuts and abrasions. Hand lotion. G & L Enterprises. Call 816-387-7332 or 660-442-5688. 40/tfc

OPEN SEASON GUN SHOP- Mound City, MO, Tuesday-Saturday: 10 a.m.-7 p.m. (directly behind Hiawatha Implement), 660-442-3252. 41/eow

REAL ESTATE

GREAT LOOKING - SOLID VALUE



Level location in Oregon, Mo. Two bedrooms, gas furnace/central air, low utility bills. Improvements include insulation, roof, siding, windows and detached garage.

Would pass inspection to qualify for FHA and USDA no down payment loans, \$50,000 Range.

Dwight Hall Realty

103 EAST NODAWAY, OREGON, MO
 660-446-2556 or 816-261-4622

REAL ESTATE

ENTERPRISE REALTY & AUCTION, LLC
 Jim Loucks, Sales Agent
 816-390-2749 • Office 877-669-7653
 www.entrealty.com

LAND FOR SALE

Don Clement

AUCTIONS
 660-442-5436
 "The Voice Everybody Knows"

Kathi Clement Realty
 www.kathiclementrealty.com

1423 State St. • Mound City, MO 64470
 660-442-6500 • Cell: 816-387-3018
 kathiclement@yahoo.com
 Kathi Clement, Broker

THE LISTING WITH EVERYTHING - INCLUDING VIEW & SPACE!



- Four bedroom, 2,000 sq. ft. home with new paint - in and out.
- 30-year outside paint - quality 2011 roof
- Newly decorated inside - dream kitchen
- Spacious lot with 22 x 26 concrete floored unit for garage/storage
 - Dual water heater system
 - Three-car attached garage/shop room
 - New carpets in 2014
- New large refrigerator, microwave, washer, dryer
 - Rugs and drapes included - 7 closets
 - Beautiful oak cabinets - lots of storage
- Living quarters basement with family room, den, bath and bedroom
 - New furniture can stay at 1/2 of purchase price
 - Priced right at **\$239,500**

Shown by appointment. Contact Don, Jesse or Ted at Hall Realty

HALL REALTY
 PO Box 218, Mound City, MO • 660-442-4029

Johnson Heating and Cooling
 Casey Johnson, Owner

660-442-6354
 Licensed and Insured
 Specializing with Trane and Heil models

J & E Concrete
 Commercial & Residential Concrete Work

Jeff Karsten
 Cell: 816-262-5933
Free Estimates

Chris Russell Farms
 For all of your farming needs.
 Planting • Harvesting • Trucking
816-261-4459

Brad Pankau's Home & Farm Repair
 Roofing, siding, interior/exterior painting, decks, gutter installation & cleaning, electrical & plumbing, drywall & interior remodeling, tree trimming & removal, etc.
BARN & IMPLEMENT SHED REPAIR!
 No job is too small! ~ Fully Insured
 Call 660-442-3354, 660-254-0156, or 660-442-6343.

LIVENGOOD Custom Ag Services

AgriGold Hybrids
 Nh3 & Cover Crop Application

Matt Livengood
 660-572-0035

Northridge Place Apartments Mound City, MO

Now Taking Applications.
 Utilities and cable included. Must be 62 or disabled to apply.
 660-442-3128, Ext. 5502

Equal Housing Opportunity

Timber Run Apartments Mound City, MO

Single bedroom apartments available.
 Now taking applications.
660-442-3128, Ext. 5502

Equal Housing Opportunity

WANTED TO RENT

Lockable garage space for travel trailer.
 Must be able to accommodate a trailer that is 9 ft. tall, 10 ft. wide, and 20 ft. long.
 Please call Pat Ryan at 660-491-5518

DRIVERS

DRIVERS - Company Flatbed Drivers. OTR, paid by the mile and weekly, health benefits. CDL-A, 1 yr. exp., over Dim preferred. 877-755-8225. 10/2tc

FOR SALE

FOR SALE - Wealthy apples, \$4/bushel or sell by the sack. 660-442-5929. 11/1tc

GARAGE SALE

GARAGE SALE
 Saturday & Sunday, Sept. 20-21
 8 a.m. - ??
 9236 County Road 68
 3.5 miles SE of Fillmore, MO
 Tools, furniture, clothing, home decor, lots of Christmas decor, junk & misc.
WATCH FOR SIGNS.

BUSINESS PROFESSIONALS & SERVICES GUIDE



Farmers Mutual Insurance Co.
 Jay and Jeremy Johnson
 (660) 442-5445
 Mound City, MO
 For All Your Insurance Needs

Home ~ Auto ~ Business
 Farm ~ Crop-Hail
CLODFELTER INSURANCE AGENCY
 610 State Street
 Mound City, MO 64470
 (660) 442-3195
 Fax (660) 442-5555

Citizens Bank & Trust
 PO Box 38, Craig, MO 64437
 660-683-5333
 904 State St., Mound City, MO 64470
 660-442-3800
 PO Box 70, Rock Port, MO 64482
 660-744-5333
 Member FDIC

Savannah License Bureau
 Connie Gordon, Agent
 Monday-Friday- 8 a.m.-5 p.m.
 Saturday- 8 a.m.-12 p.m.
 420 Court St.
 Savannah, MO 64485
 816-324-5122
 Fax: 816-324-5977

Brian A. Tubbs Attorney At Law
 Phone: 660-442-5989
 Fax: 660-442-3574
 tubbslaw@centurylink.net
The Law Office of Brian Tubbs LLC
 Call for appointments
 222 State Street • Mound City, MO 64470

Advertise Here!!!
 Mound City NEWS
 ADVERTISING
 CALL 660-442-5423

RESERVE NATIONAL
Denny Patterson, Field Representative
 HOSPITALIZATION
 HEART & CANCER INS.
 MEDICARE SUPPLEMENTS
 HOME HEALTH CARE
 DENTAL & VISION
 www.ReserveNational.com

Office:
 2921 N. Belt Hwy., Suite U-17
 St. Joseph, MO 64506
 Office Toll Free 866-650-2710
 OKC Toll Free 800-654-9106
 Cell 816-261-1000

Mound City Lumber re-opens in its new building on September 15

Continued from front



The expanded Mound City Lumber retail item center - In the new main building is shown here. The Do It Best center offers a wide range of items for customers in addition to the lumber yard's building products and services. The new facility opened to the public on Monday, Sept. 15.



Greg Wheeler, left - Helps a customer at the new building on 108 W. 7th St. in Mound City. The large facility, which opened to the public on Monday, Sept. 15, now houses an expanded line of Do It Best products.

MDC agents help rescue motorists stranded in flash flood

Rescue by boat, front loader and road grader

Missouri Department of Conservation (MDC) agents helped rescue eight motorists stranded on or near Interstate 29 by a flash flood early Wednesday, Sept. 10, following torrential rain in Holt County. The rescues occurred from about midnight to 2:30 a.m. There were no injuries.

The rescues were by boat, motorized front loader and one from the front of a road grader.

Swift water, varied water depths, rain and darkness made the rescues tricky, said Conservation Agent Jade Wright. The National Weather Service reported 5.25 inches of rain fell at Mound City and areas to the north received 6 inches. Squaw Creek was flooding over the area's roads.

Wright, Conservation Agent Anthony Maupin and Missouri Highway Patrol Sgt. Mike Quilty used an MDC boat to reach a school bus driver stranded on Route N north of Mound City. The boat and trailer had to be hooked to a Missouri Department of Transportation (MoDOT) front loader to reach a launching point. Swift current had turned the bus around, killed the engine and pushed it off the road up against a fence, Wright said. Rescuers were able to get the woman off the bus, into the boat and back to shore but not without some tricky maneuvering.

"It took a couple of attempts to get up to her," Wright said. "The water was very fast, we were very lucky."

Afterward, Wright and Maupin helped rescue six people in three vehicles stalled on a flooded I-29. They rode in the bucket of a MoDOT front loader to reach those stranded and then haul them to safety.

Conservation Agent Eric Abbott and a Mo-

DOT road grader operator rescued a man clinging to a luggage rack on top of a Jeep Cherokee on the north side of the flash flood. The current had swept the Cherokee into the median where the water was deeper and at roof level. A boat appropriate for the swift water was not available, so they improvised a solution, said Abbott, who is trained for swift-water rescues.

"We were afraid if the water came up six more inches he would be swept away," he said.

The road grader was driven near the vehicle. Abbott moved out to the front of the road grader, tossed the man a tow rope and instructed him on how to secure it.

"On the count of three, we made a big leap of faith," Abbott said. "He jumped into the water toward the road grader, and I pulled with all my might, and we got him pulled out. He was cold and a little bit hypothermic. It was a bad situation."

Also on the scene for all rescues were Missouri State Highway Patrol Troop H officers, the Missouri Department of Transportation, the Atchison-Holt Ambulance District, the Mound City Rural Fire Department, the Holt County Sheriff's Department, the Andrew County Sheriff's Department and the St. Joseph Fire Department.

"It was a team effort," said Roger Wolken, MDC Northwest Region protection supervisor. "Everybody responded quickly and it put them in a very dangerous situation to rescue citizens, which they did. It's something we train for and hope we don't have to use. But we want to be prepared for it, and we were."



Nodaway-Holt R-7 celebrates 50 years

Nodaway-Holt R-7 elementary, middle and high school students, staff and community members - Form "50" for the school's 50th anniversary after the Homecoming parade and pep rally on Friday afternoon, Sept. 12.



Reaching for the top

Brad Pankau of Brad Pankau's Home & Farm Repair in Mound City, right - Reaches for the top of the Farmers Exchange building on the southeast end of State Street in Mound City on Sunday, Sept. 14. Assisting Pankau at left is his son, Austin. The newly painted building, which is now owned by Sharp Flats, houses an apartment complex, and office space is available on the first floor.

OCTOBER 2014 Events' Schedule

\$20,000 CASH GIVEAWAY!

SATURDAY, October 4 - \$10,000 CASH GIVEAWAY!
\$1,000 CASH Drawings every hour, 3 p.m.-midnight

Sat., October 18 - \$10,000 MONDAY MADNESS GIVEAWAY!
\$100 CASH "Hot Seat" Drawings, hourly 1-4 p.m.; \$200 CASH Drawings every half hour, 5-8:30 p.m.; \$300 CASH Drawings every half hour, 9:30-11:30 p.m.; \$500 CASH Drawings every 15 minutes, midnight-1:30 a.m.; \$1,000 CASH Drawings every 10 minutes, 1:40-2 a.m.

\$5 Buffets Monday-Thursday, Lunch & Dinner Buffets!

New Members Spin The Wheel For Free Play All Month Long!

SUNDAYS - 3X POINTS 9 a.m.-Noon!
"Hot Seat" Drawings to win \$100 in Promo Cash & \$50 in Promo Cash for the month of November, hourly, 3 p.m.-12 a.m.

MONDAYS - 3X POINTS 9 a.m.-Noon!
"Hot Seat" Drawings to win \$50 in Promo Cash every half hour, Noon-10 p.m.

TUESDAYS - HOT SEAT
"Hot Seat" Drawings to win \$100 in Promo Cash, free buffet and hoodie, hourly, 1 p.m.-10 p.m.

WEDNESDAYS - Drawings to double up on Promo Cash!
"Hot Seat" Drawings hourly, noon-5 p.m., and ticket drawings, hourly, 6 p.m.-11 p.m. Winners will "Spin the Wheel" and we will double what you land on. You can win up to \$300 in Promo Cash!

THURSDAYS - 3X Points 9 a.m.-Noon!
"Hot Seat" Drawings, hourly, noon-5 p.m. and drawings hourly, 6-10 p.m. for "Double Spin The Wheel" to win up to \$200 in Promo Cash. Spin the wheel twice and that's what you win.

FRIDAYS & SATURDAYS - "HOT SEAT"
"Hot Seat" Drawings to win \$50 in Promo Cash and \$50 in CASH, hourly, noon-5 p.m. Drawings hourly, 7 p.m.-1 a.m., to play the card game "Hi-Lo". There will be 13 giant cards, the winner will pick 5 cards then they will be turned over one at a time. Winner will turn over the first card then will guess whether the next card will be higher or lower than the previous. \$100 in Promo Cash for the first card, \$50 in Promo Cash for additional winning cards. You can win up to \$300 in Promo Cash.

BINGO - Buy 1 Get 1 Free Nights ~ October 1st & 15th!
BINGO TRIP GIVEAWAY, SATURDAY, OCTOBER 25, 2014! See Bingo Hall For Details

www.casinowhitecloud.org
Toll Free 877-652-6115 • www.Facebook.com/casinowhitecloud

5 Miles West of White Cloud, KS • Toll Free 877-652-6115
Casino Hours: Sun.-Thurs. - 9 a.m. - 1 a.m.
Fri. & Sat. - 9 a.m. - 3 a.m.
Find us on Facebook for great offers!